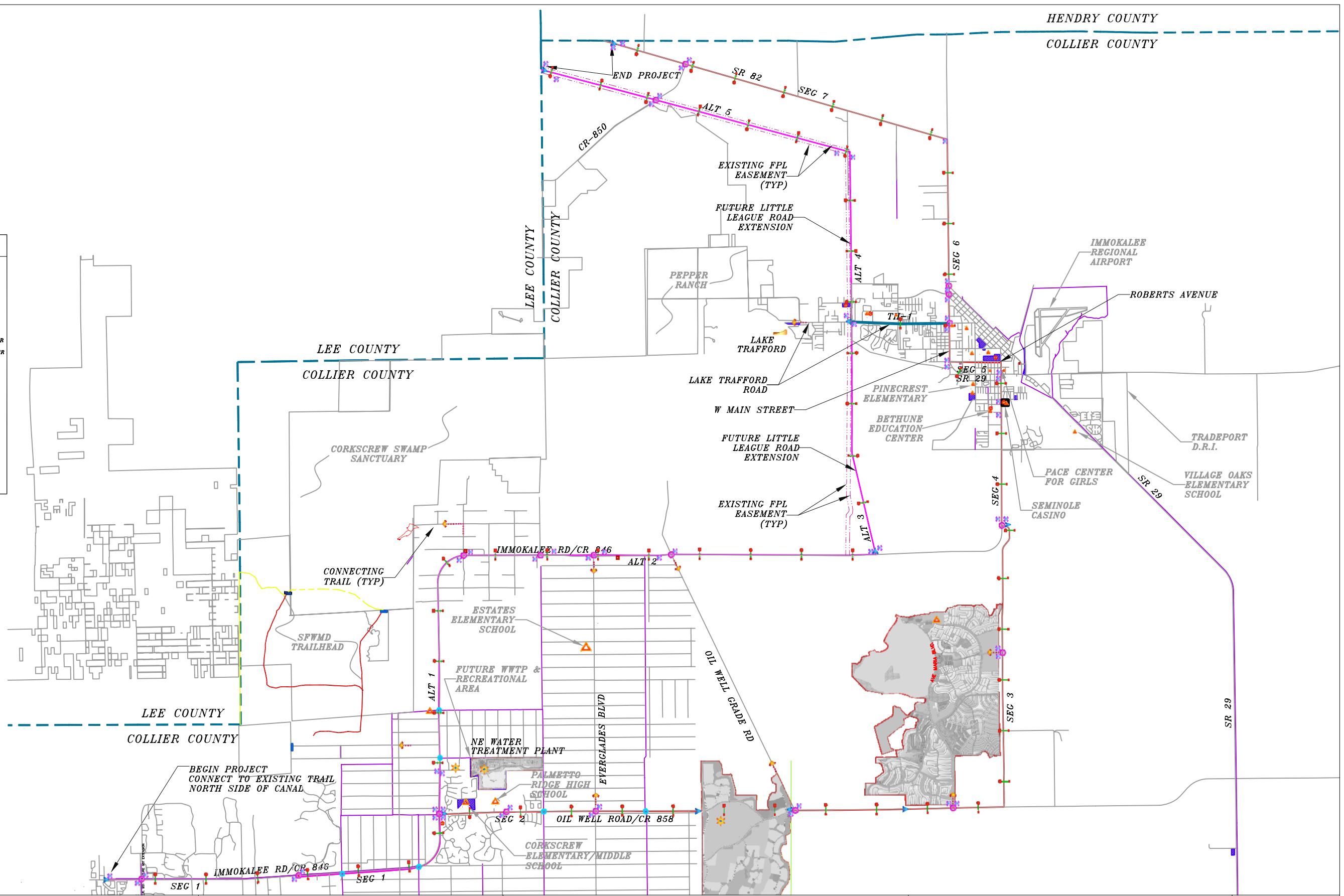
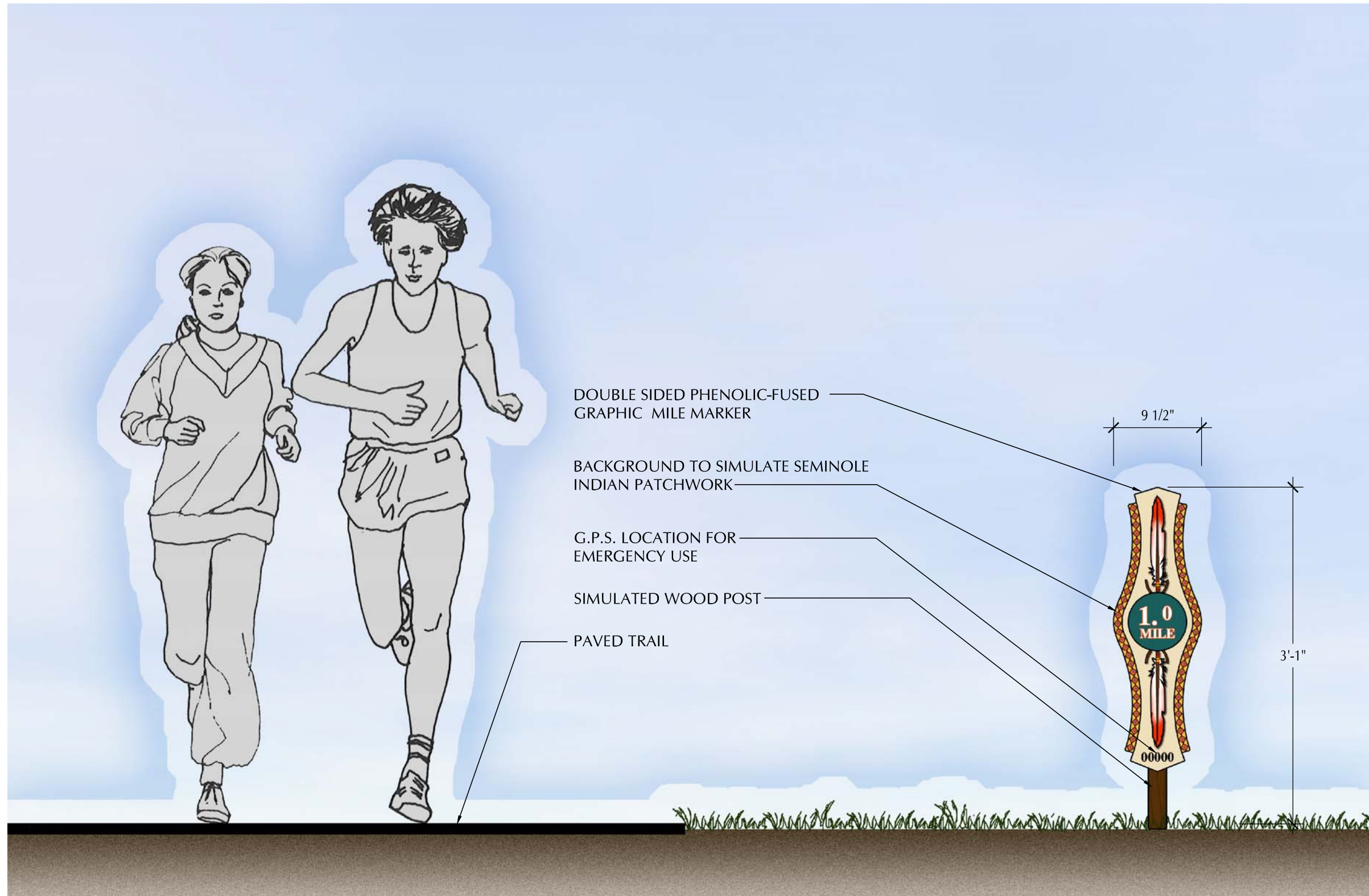


LEGEND	
	PREFERRED ALIGNMENT
	ALTERNATIVE ALIGNMENT
	INTERSECTION CROSSING
	CANAL CROSSING
	FIRE STATION
	SCHOOL
	FUTURE SCHOOL
	RURAL REST STOP AND MILE MARKER
	URBAN REST STOP AND MILE MARKER
	CONNECTION
	PRIMARY TRAILHEAD
	SECONDARY TRAILHEAD
	PRIMARY IDENTITY SIGN (P.I.S.)
	P.I.S. FOR CONSTRAINED AREAS
	DIRECTIONAL SIGN
	ARCHEOLOGICAL
	HISTORICAL SITE
	PARKS
	COUNTY LINE
	FPL EASEMENT
	CANALS





DOUBLE SIDED PHENOLIC-FUSED GRAPHIC MILE MARKER

BACKGROUND TO SIMULATE SEMINOLE INDIAN PATCHWORK

G.P.S. LOCATION FOR EMERGENCY USE

SIMULATED WOOD POST

PAVED TRAIL

9 1/2"

3'-1"

TYPICAL MILE MARKER SIGN

SCALE: 1" = 1'-0"

ELEVATION

PREPARED BY:



PREPARED FOR:



PROJECT:

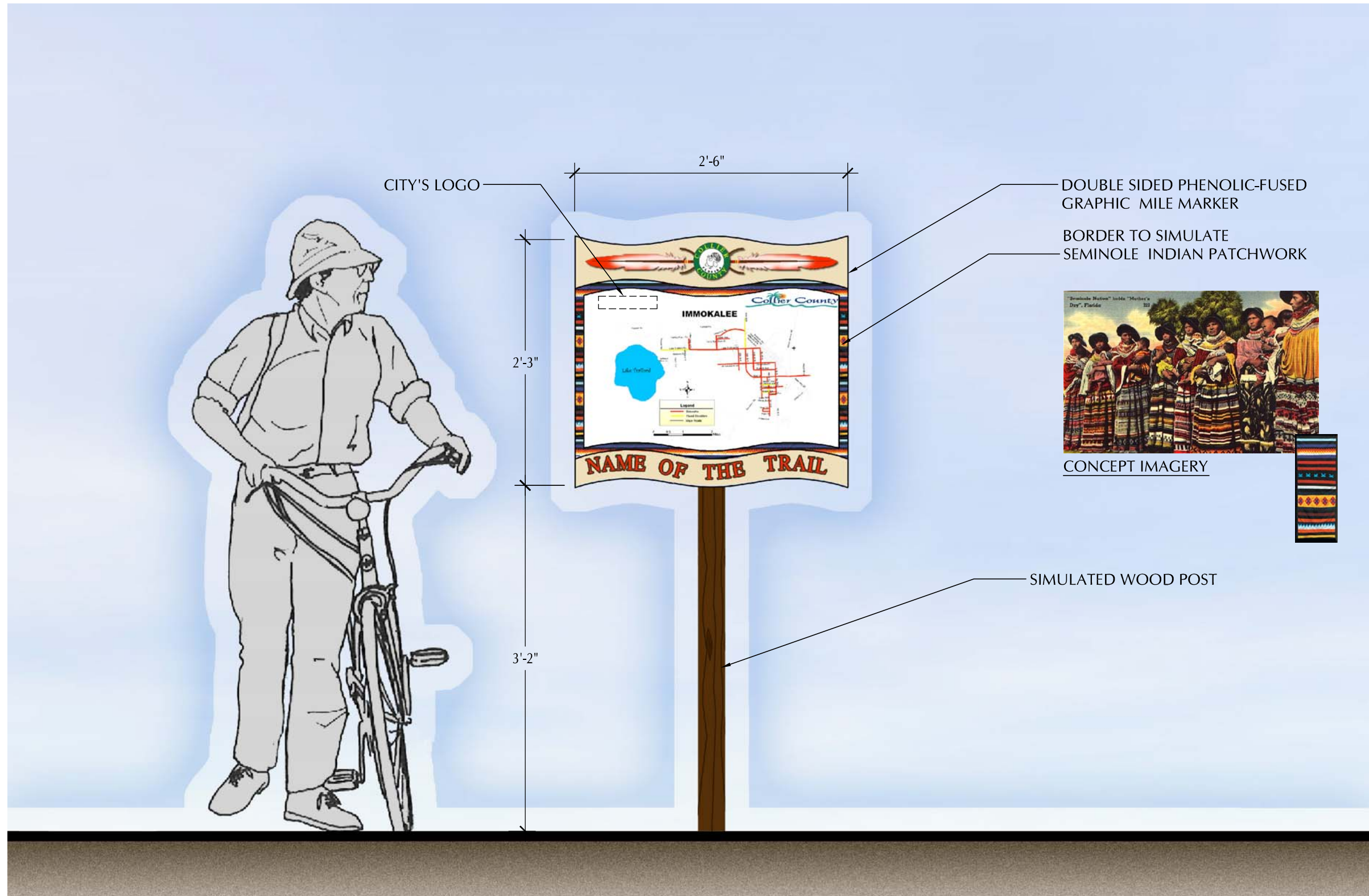
**TRAIL PLANNING & ASSESSMENT
FEASIBILITY STUDY**
COLLIER COUNTY, FLORIDA

FIGURE TITLE:

TYPICAL
MILE MARKER SIGN

FIGURE #:

F-33



TYPICAL INTERPRETIVE SIGN

SCALE: 1" = 1'-0"

ELEVATION

PREPARED BY:



PREPARED FOR:



PROJECT:

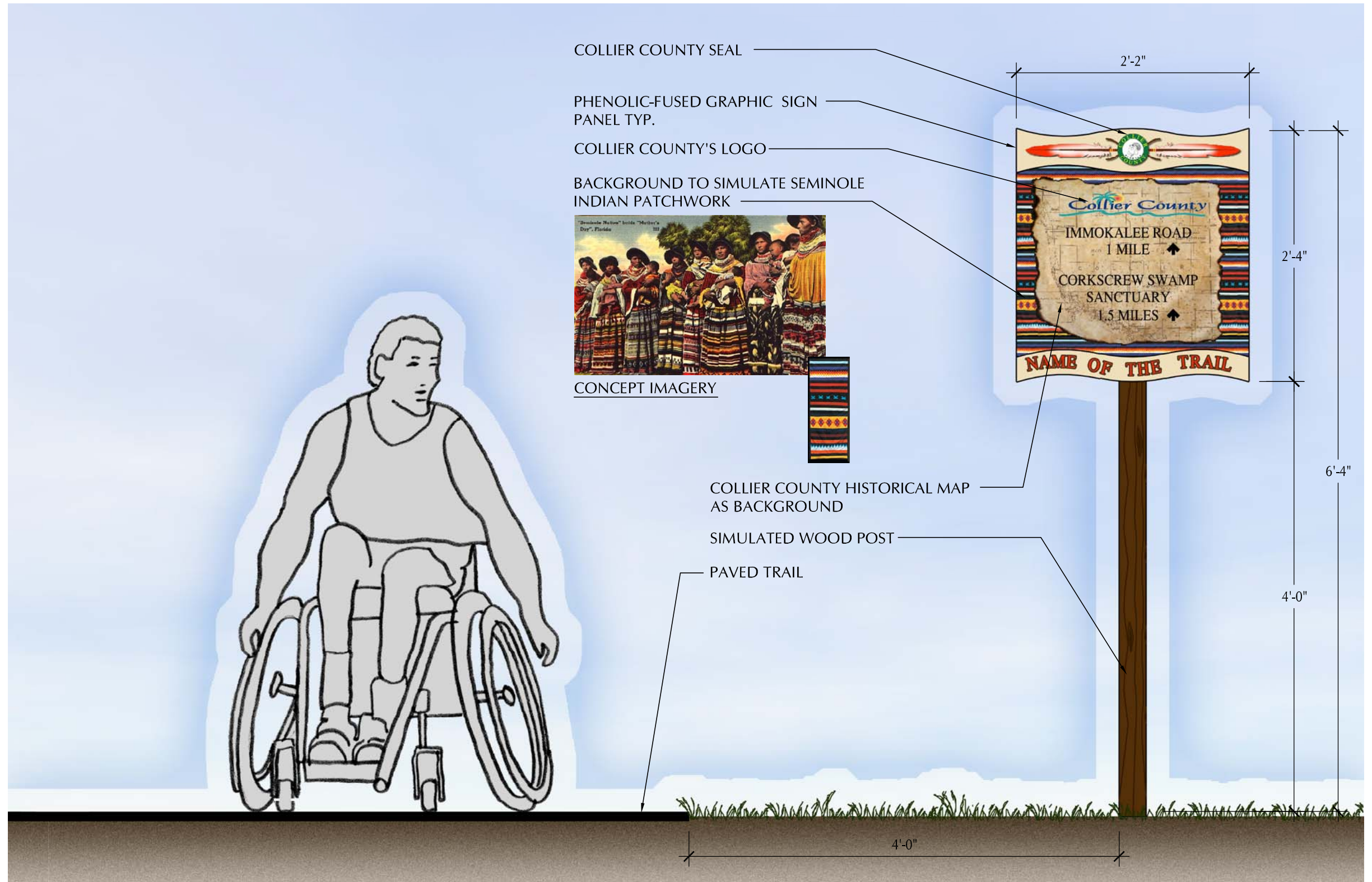
**TRAIL PLANNING & ASSESSMENT
FEASIBILITY STUDY**
COLLIER COUNTY, FLORIDA

FIGURE TITLE:

**TYPICAL
INTERPRETIVE SIGN**

FIGURE #:

F-32



COLLIER COUNTY SEAL

PHENOLIC-FUSED GRAPHIC SIGN PANEL TYP.

COLLIER COUNTY'S LOGO

BACKGROUND TO SIMULATE SEMINOLE INDIAN PATCHWORK



CONCEPT IMAGERY

COLLIER COUNTY HISTORICAL MAP AS BACKGROUND

SIMULATED WOOD POST

PAVED TRAIL

DIRECTIONAL SIGN

SCALE: 1" = 1'-0"

ELEVATION

PREPARED BY:



PREPARED FOR:



PROJECT:

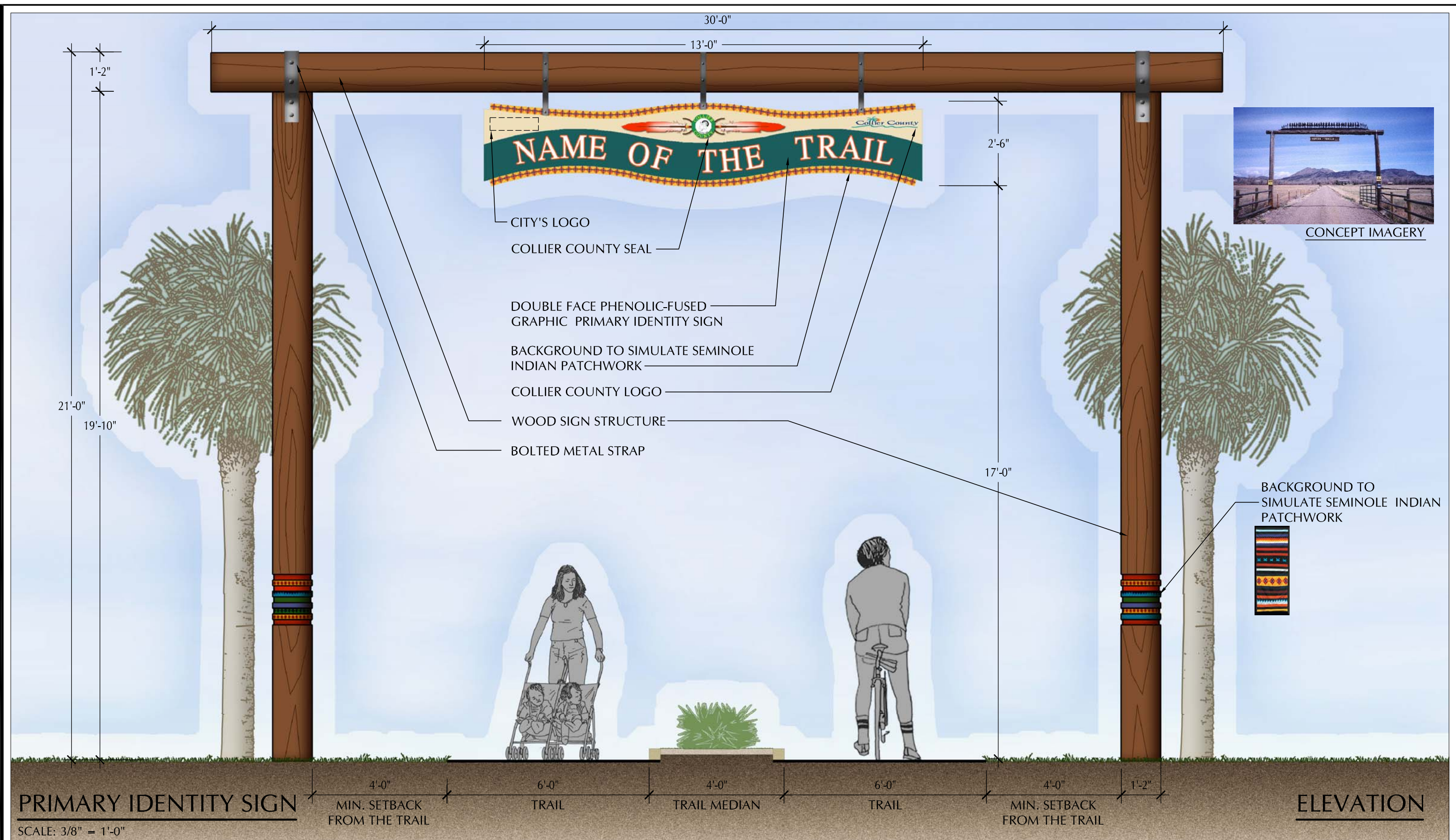
**TRAIL PLANNING & ASSESSMENT
FEASIBILITY STUDY**
COLLIER COUNTY, FLORIDA

FIGURE TITLE:

TYPICAL
DIRECTIONAL SIGN

FIGURE #:

F-31



PREPARED BY:



PREPARED FOR:



PROJECT:

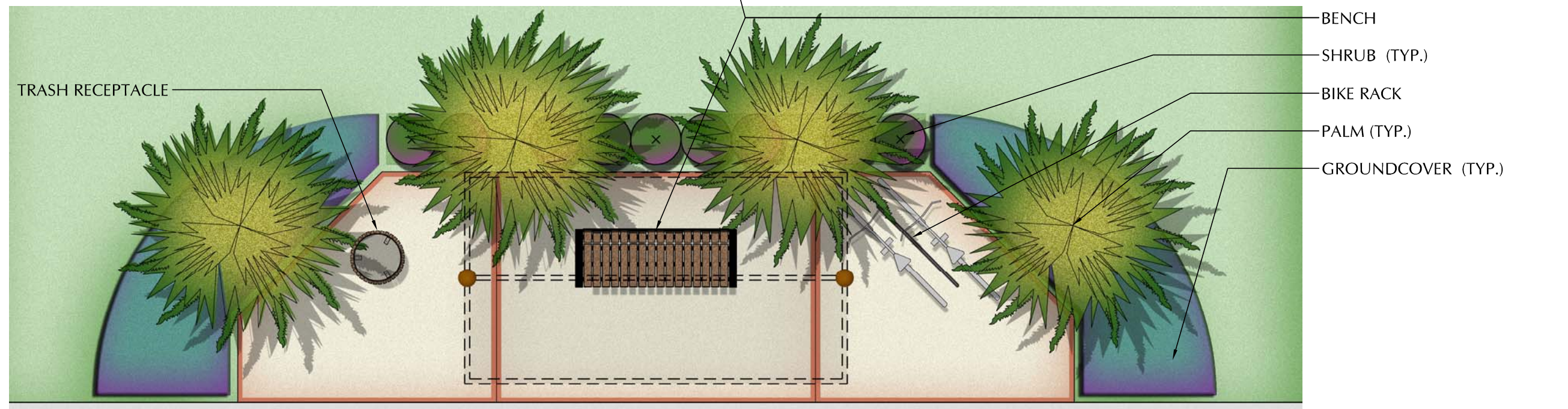
TRAIL PLANNING & ASSESSMENT
FEASIBILITY STUDY
COLLIER COUNTY, FLORIDA

FIGURE TITLE:

TYPICAL PRIMARY
IDENTITY SIGN

FIGURE #:

F-29



TYPICAL RURAL REST STOP

SCALE: 1/4" = 1'-0"

PREPARED BY:



PREPARED FOR:



PROJECT:

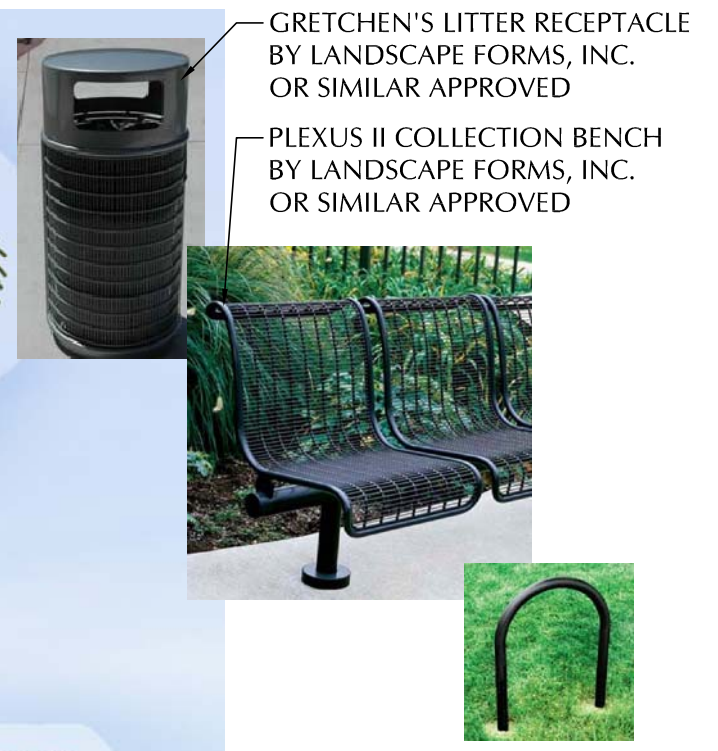
**TRAIL PLANNING & ASSESSMENT
FEASIBILITY STUDY**
COLLIER COUNTY, FLORIDA

FIGURE TITLE:

**TYPICAL RURAL
REST STOP
PLAN AND ELEVATION**

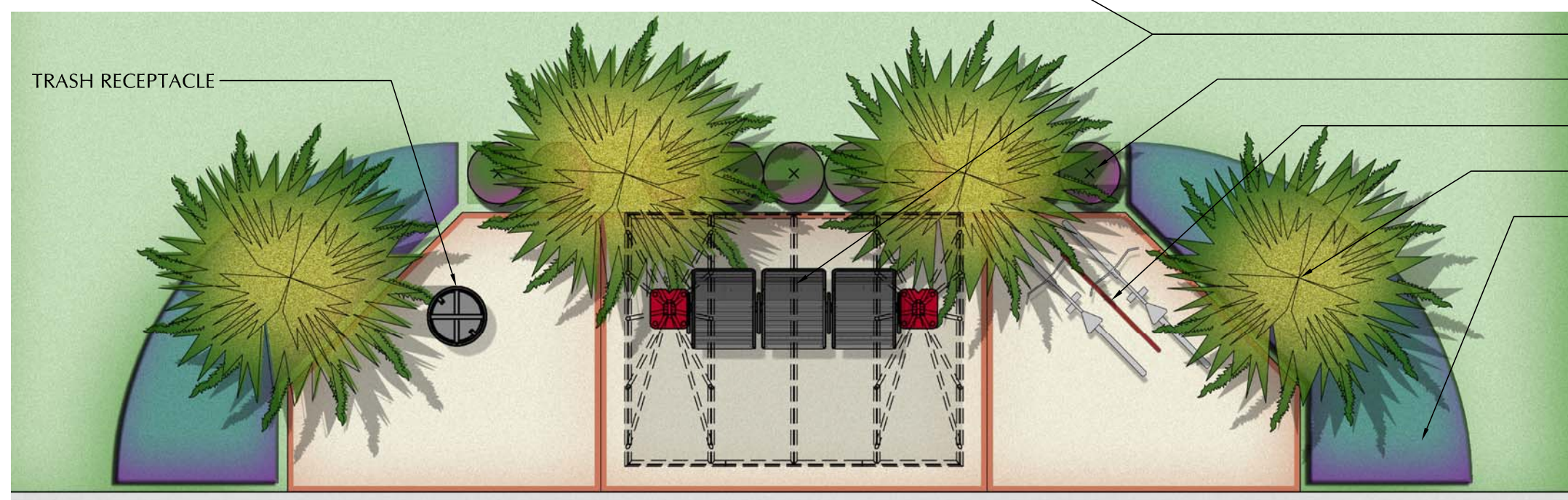
FIGURE #:

F-27



GRETCHEN'S LITTER RECEPTACLE
BY LANDSCAPE FORMS, INC.
OR SIMILAR APPROVED




PLEXUS II COLLECTION BENCH
BY LANDSCAPE FORMS, INC.
OR SIMILAR APPROVED

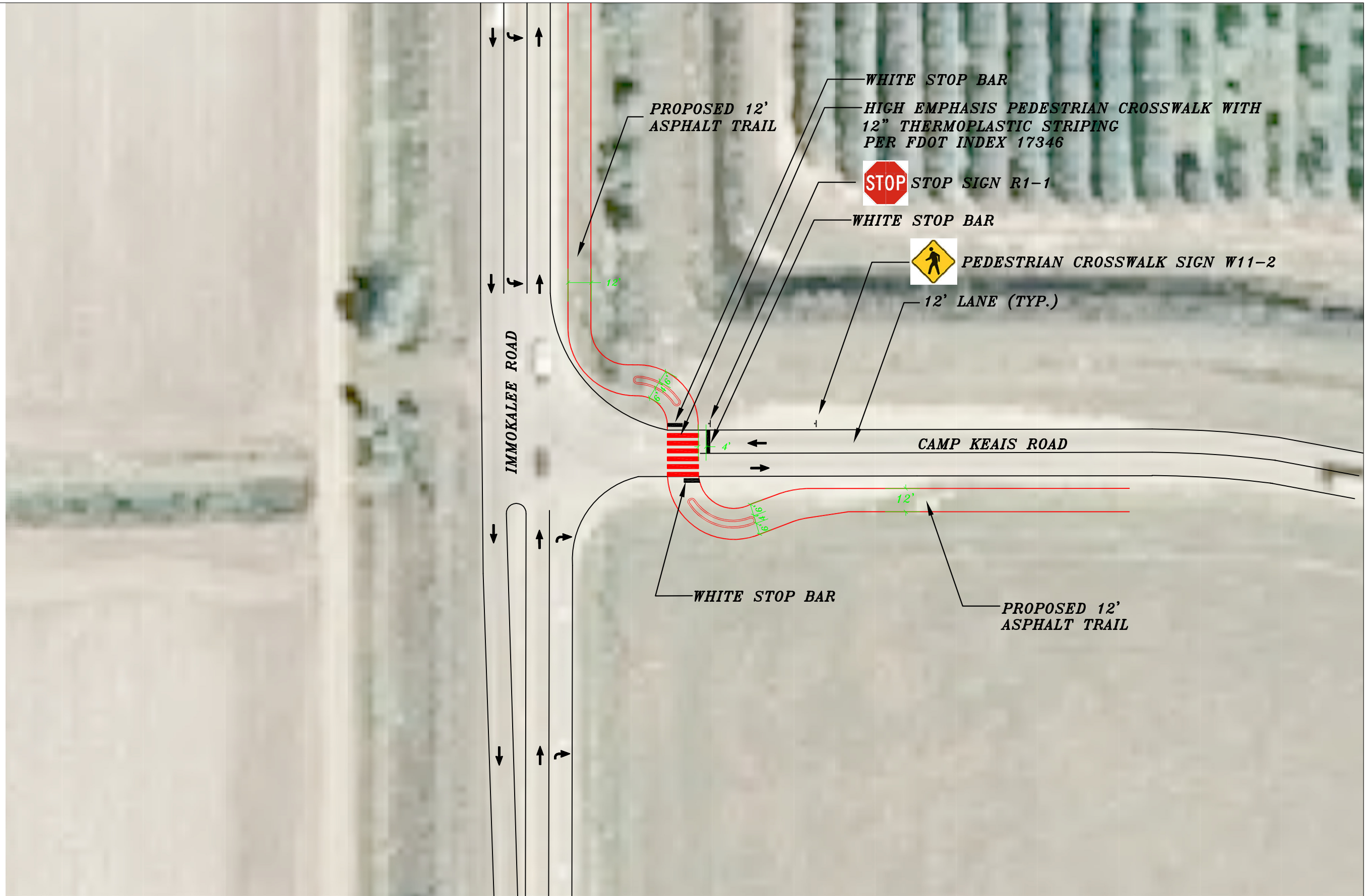
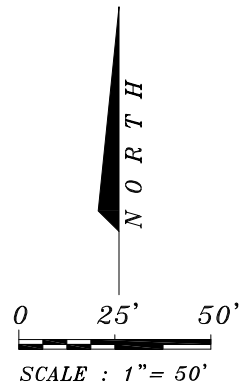


TYPICAL URBAN REST STOP

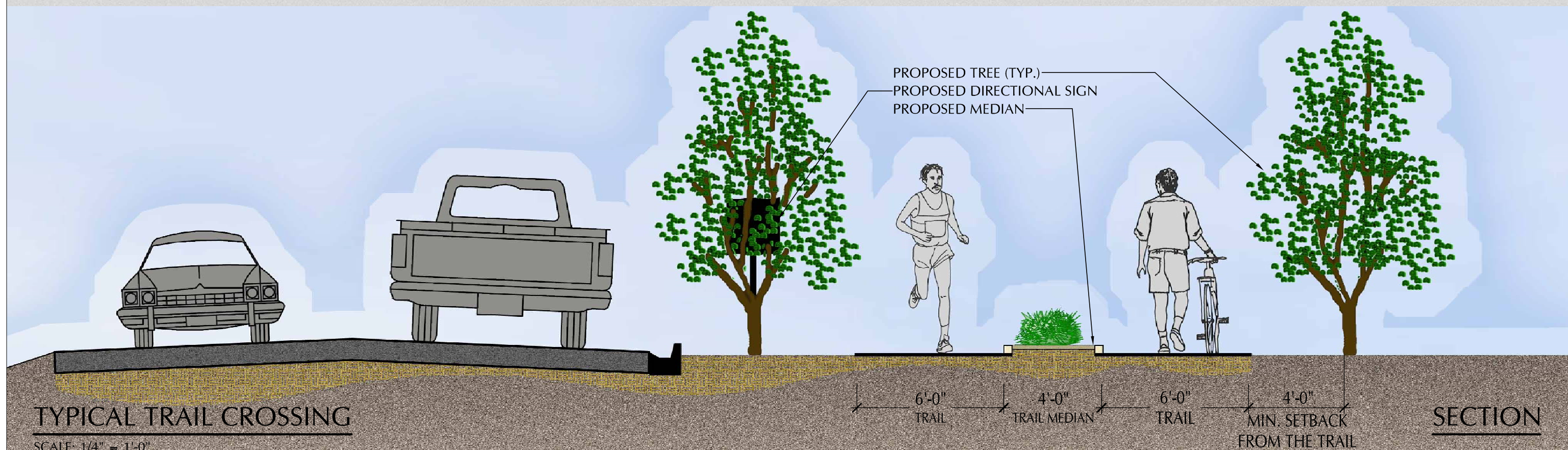
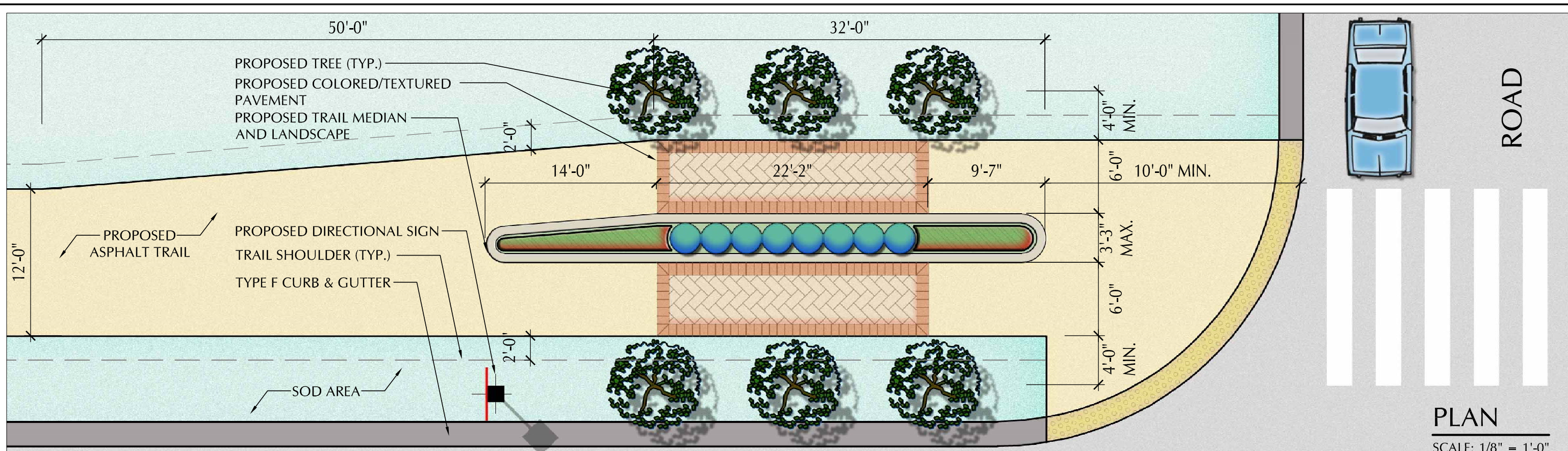
PLAN

SCALE: 1/4" = 1'-0"

PREPARED BY: 	PREPARED FOR: 	PROJECT: 	TRAIL PLANNING & ASSESSMENT FEASIBILITY STUDY COLLIER COUNTY, FLORIDA	FIGURE TITLE: TYPICAL URBAN REST STOP PLAN AND ELEVATION	FIGURE #: F-25
---	--	--	---	---	-------------------



PREPARED BY: 	PREPARED FOR: 	PROJECT: TRAIL PLANNING & ASSESSMENT FEASIBILITY STUDY COLLIER COUNTY, FLORIDA	SHEET TITLE: INTERSECTION DETAIL	FIGURE: F-20
------------------	-------------------	---	--	------------------------



PREPARED BY: 	PREPARED FOR: 	PROJECT: 	FIGURE TITLE: TRAIL PLANNING & ASSESSMENT FEASIBILITY STUDY COLLIER COUNTY, FLORIDA	FIGURE #: TYPICAL TRAIL CROSSING	FIGURE #: F-19
------------------	-------------------	--------------	--	-------------------------------------	-------------------

LEGEND

	TRAIL SEGMENT 1		INTERSECTION CROSSING
	TRAIL ALTERNATIVE 1		CANAL CROSSING
	TRAIL SEGMENT 2		FIRE STATION
	TRAIL ALTERNATIVE 2		SCHOOL
	TRAIL SEGMENT 3		FUTURE SCHOOL
	TRAIL ALTERNATIVE 3		RURAL REST STOP AND MILE MARKER
	TRAIL ALTERNATIVE 3A		URBAN REST STOP AND MILE MARKER
	TRAIL ALTERNATIVE 3B		CONNECTION
	TRAIL ALTERNATIVE 3C		PRIMARY TRAILHEAD
	TRAIL ALTERNATIVE 3D		SECONDARY TRAILHEAD
	TRAIL SEGMENT 4		PRIMARY IDENTITY SIGN (P.I.S.)
	TRAIL ALTERNATIVE 4		P.I.S. FOR CONSTRAINED AREAS
	TRAIL SEGMENT 5		DIRECTIONAL SIGN
	TRAIL ALTERNATIVE 5		ARCHAEOLOGICAL
	TRAIL ALTERNATIVE 5A		HISTORICAL SITE
	TRAIL SEGMENT 6		PARKS
	TRAIL ALTERNATIVE 6		COUNTY LINE
	TRAIL SEGMENT 7		FPL EASEMENT
			CANALS

