

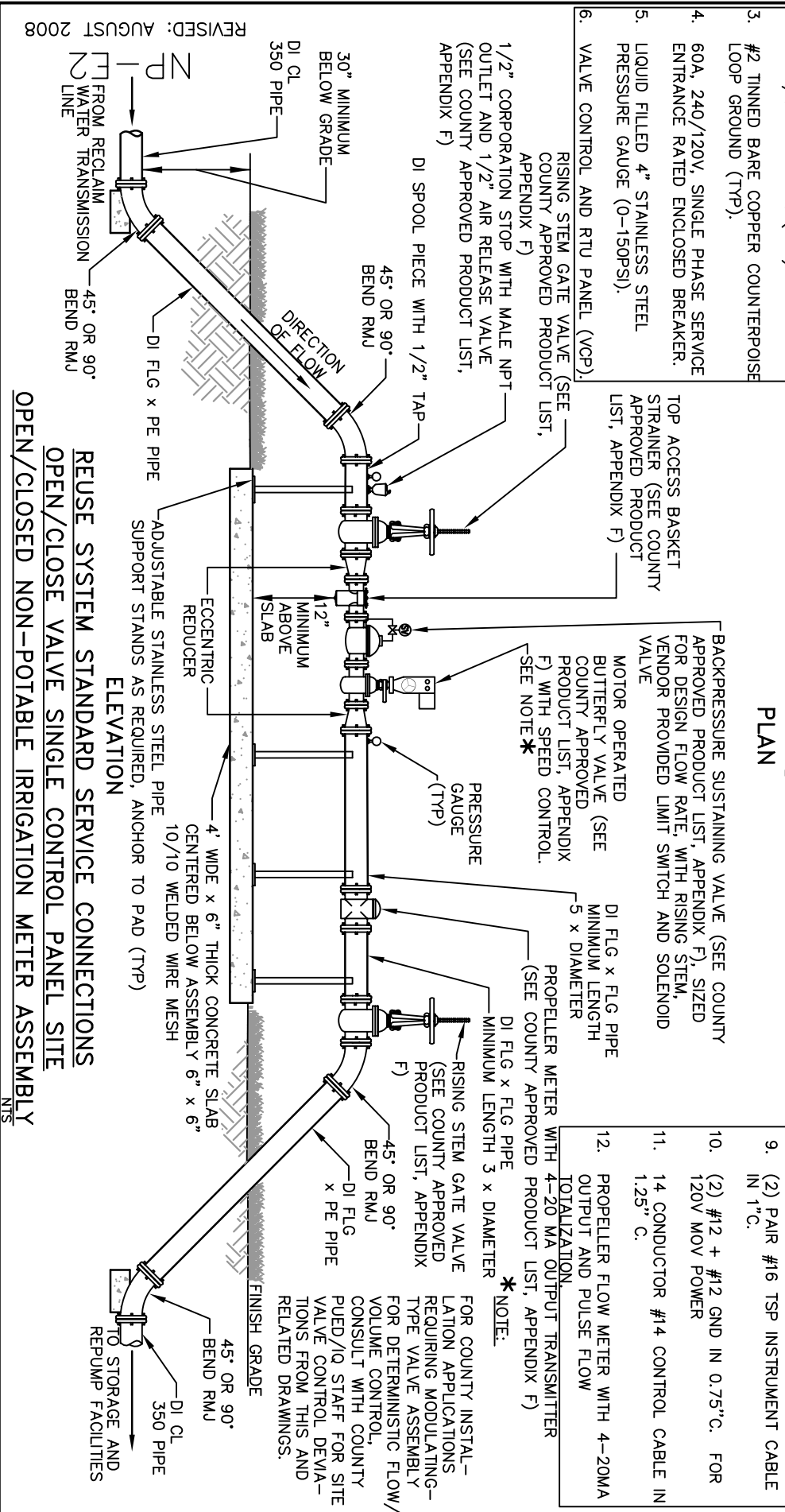
KEYNOTES:

1. 20' DRIVEN GROUND ROD WITH INSPECTION TEST WELL (SEE DETAIL) (TYP).
2. #2 TINNED SOLID COPPER TO EQUIPMENT/CABINETS ETC. (TYP).
3. #2 TINNED BARE COPPER COUNTERPOISE LOOP GROUND (TYP).
4. 60A, 240/120V, SINGLE PHASE SERVICE ENTRANCE RATED ENCLOSED BREAKER.
5. LIQUID FILLED 4" STAINLESS STEEL PRESSURE GAUGE (0-150PSI).
6. VALVE CONTROL AND RTU PANEL (VCP), RISING STEM GATE VALVE (SEE COUNTY APPROVED PRODUCT LIST, APPENDIX F)

KEYNOTES CONTINUED...

7. 5 CONDUCTOR, #14 CONTROL CABLE IN 0.75" CONDUIT.
8. RTU ANTENNA TOWER. SEE DETAIL.
9. (2) PAIR #16 TSP INSTRUMENT CABLE IN 1" C.
10. (2) #12 + #12 GND IN 0.75" C. FOR 120V MOV POWER
11. 14 CONDUCTOR #14 CONTROL CABLE IN 1.25" C.
12. PROPELLER FLOW METER WITH 4-20MA OUTPUT AND PULSE FLOW TOTALIZATION

PLAN



REVISED: AUGUST 2008

REUSE SYSTEM STANDARD SERVICE CONNECTIONS
 OPEN/CLOSE VALVE SINGLE CONTROL PANEL SITE
 OPEN/CLOSED NON-POTABLE IRRIGATION METER ASSEMBLY

FOR COUNTY INSTALLATION APPLICATIONS REQUIRING MODULATING-TYPE VALVE ASSEMBLY FOR DETERMINISTIC FLOW/VOLUME CONTROL, CONSULT WITH COUNTY PUEB/NO STAFF FOR SITE VALVE CONTROL DEMANDS FROM THIS AND RELATED DRAWINGS.