

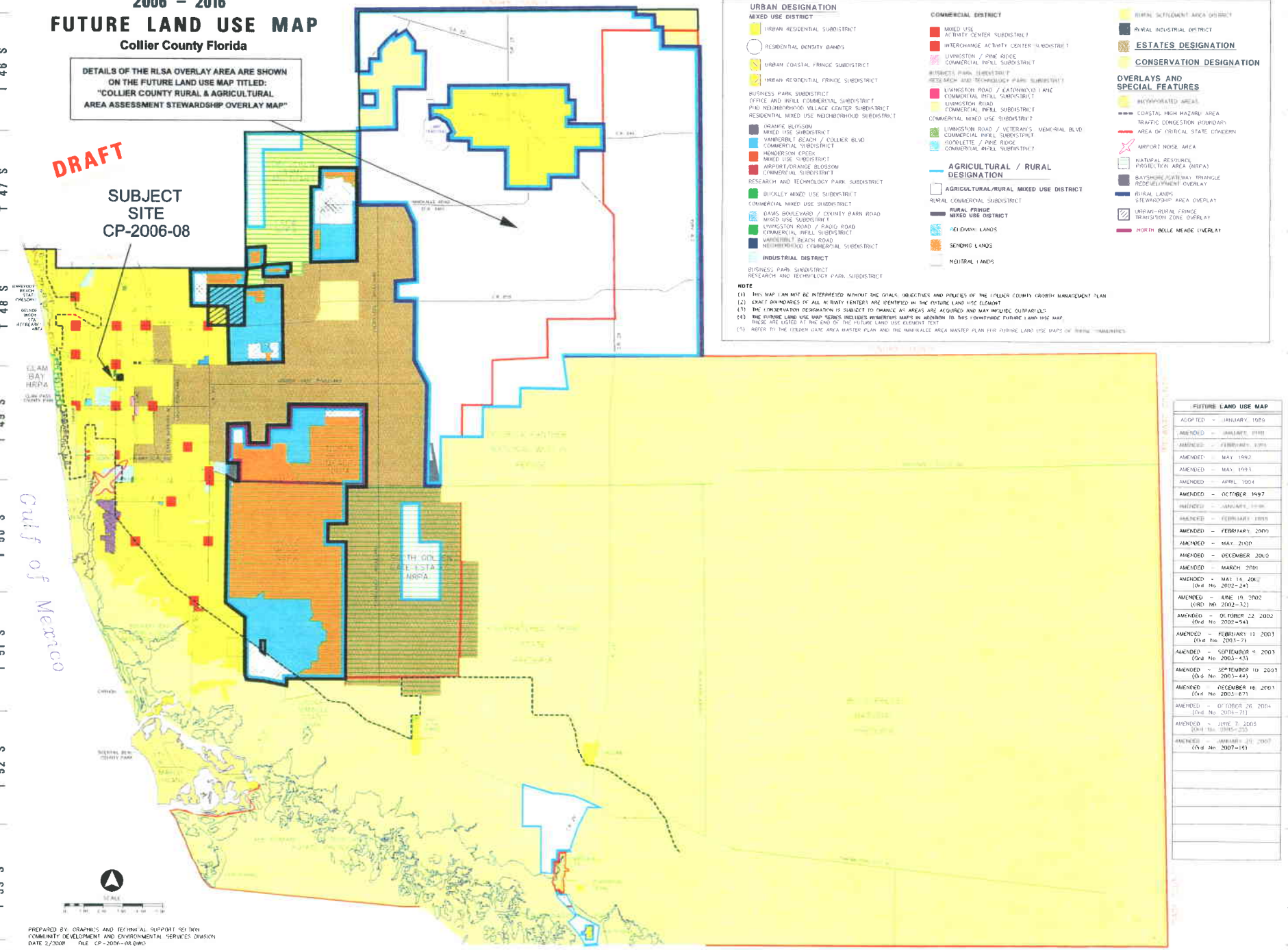
R 25 E R 26 E R 27 E R 28 E R 29 E R 30 E R 31 E R 32 E R 33 E R 34 E

# 2006 - 2016 FUTURE LAND USE MAP Collier County Florida

DETAILS OF THE RLSA OVERLAY AREA ARE SHOWN  
ON THE FUTURE LAND USE MAP TITLED:  
"COLLIER COUNTY RURAL & AGRICULTURAL  
AREA ASSESSMENT STEWARDSHIP OVERLAY MAP"

**DRAFT**

**SUBJECT  
SITE  
CP-2006-08**



**URBAN DESIGNATION**

**MIXED USE DISTRICT**

- URBAN RESIDENTIAL SUBDISTRICT
- RESIDENTIAL DENSITY BANDS
- URBAN (COASTAL FRINGE) SUBDISTRICT
- URBAN RESIDENTIAL FRINGE SUBDISTRICT

**BUSINESS PARK SUBDISTRICT**

- DEPUE AND WHEEL COMMERCIAL SUBDISTRICT
- PHO. NEIGHBORHOOD VILLAGE CENTER SUBDISTRICT
- RESIDENTIAL MIXED USE NEIGHBORHOOD SUBDISTRICT

**WATERFRONT SUBDISTRICT**

- WATERFRONT SUBDISTRICT
- WATERFRONT BEACH / COLLIER BLVD COMMERCIAL SUBDISTRICT
- HENDERSON CREEK
- MIXED USE SUBDISTRICT
- WATERFRONT BEACH SUBDISTRICT
- COMMERCIAL SUBDISTRICT
- RESEARCH AND TECHNOLOGY PARK SUBDISTRICT

**INDUSTRIAL DISTRICT**

- BUSINESS PARK SUBDISTRICT
- RESEARCH AND TECHNOLOGY PARK SUBDISTRICT

**COMMERCIAL DISTRICT**

- MIXED USE
- ACTIVITY CENTER SUBDISTRICT
- INTERCHANGE ACTIVITY CENTER SUBDISTRICT
- WINTERGARDEN / PINE RIDGE COMMERCIAL INFILL SUBDISTRICT
- LIVINGSTON / PINE RIDGE COMMERCIAL INFILL SUBDISTRICT
- LIVINGSTON ROAD / LANTANA RD COMMERCIAL INFILL SUBDISTRICT
- LIVINGSTON ROAD COMMERCIAL INFILL SUBDISTRICT
- COMMERCIAL INFILL SUBDISTRICT
- COMMERCIAL MIXED USE SUBDISTRICT
- LIVINGSTON ROAD / VETERAN'S INDUSTRIAL BLVD COMMERCIAL INFILL SUBDISTRICT
- COMMERCIAL INFILL SUBDISTRICT
- COMMERCIAL MIXED USE SUBDISTRICT

**AGRICULTURAL / RURAL DESIGNATION**

- AGRICULTURAL/RURAL MIXED USE DISTRICT
- RURAL COMMERCIAL SUBDISTRICT
- RURAL FRINGE MIXED USE DISTRICT
- FIELDWIND LANDS
- SCENIC LANDS
- NEUTRAL LANDS

**ESTATES DESIGNATION**

- CONSERVATION DESIGNATION

**OVERLAYS AND SPECIAL FEATURES**

- UNINCORPORATED AREA
- COASTAL HIGH HAZARD AREA
- TRAFFIC CONGESTION HAZARD
- AREA OF CRITICAL STATE ECHOEN
- AIRPORT NOISE AREA
- NATURAL RESERVES
- PROTECTED WETLANDS (DURPA)
- BAYSIDE HIGHWAY CORRIDOR REDEVELOPMENT OVERLAY
- RURAL LANDS STEWARDSHIP AREA OVERLAY
- URBAN-RURAL FRINGE TRANSITION ZONE OVERLAY
- NORTH BELLE MEADE OVERLAY

**NOTE**

(1) THIS MAP CAN NOT BE INTERPRETED WITHOUT THE GOALS, OBJECTIVES AND POLICIES OF THE COLLIER COUNTY GROWTH MANAGEMENT PLAN.

(2) EXACT BOUNDARIES OF ALL AT-RISK WETLANDS ARE IDENTIFIED IN THE FUTURE LAND USE ELEMENT.

(3) THE CONSERVATION DESIGNATION IS SUBJECT TO CHANGE AS AREAS ARE ACQUIRED AND MAY INCLUDE OUTLYING ISLANDS.

(4) THE FUTURE LAND USE MAP REVISIONS INCLUDES REVISIONS MAPS IN ADDITION TO THIS FUTURE LAND USE MAP. THESE ARE LISTED AT THE END OF THE FUTURE LAND USE ELEMENT TEXT.

(5) REFER TO THE FUTURE LAND USE AREA MASTER PLAN AND THE UNINCORPORATED AREA MASTER PLAN FOR FUTURE LAND USE MAPS OF THESE JURISDICTIONS.

FUTURE LAND USE MAP	
ADOPTED	JANUARY 1989
AMENDED	MAY 1991
AMENDED	FEBRUARY 1993
AMENDED	MAY 1993
AMENDED	MAY 1993
AMENDED	APRIL 1994
AMENDED	OCTOBER 1997
AMENDED	JANUARY 1998
AMENDED	FEBRUARY 1998
AMENDED	FEBRUARY 2000
AMENDED	MAY 2000
AMENDED	DECEMBER 2000
AMENDED	MARCH 2001
AMENDED	MAY 14, 2001 (Ord. No. 2002-24)
AMENDED	JUNE 18, 2002 (Ord. No. 2002-32)
AMENDED	OCTOBER 22, 2002 (Ord. No. 2002-54)
AMENDED	FEBRUARY 11, 2003 (Ord. No. 2003-7)
AMENDED	SEPTEMBER 9, 2003 (Ord. No. 2003-43)
AMENDED	SEPTEMBER 10, 2003 (Ord. No. 2003-44)
AMENDED	DECEMBER 16, 2003 (Ord. No. 2003-87)
AMENDED	OCTOBER 26, 2004 (Ord. No. 2004-71)
AMENDED	JUNE 7, 2005 (Ord. No. 2005-25)
AMENDED	JANUARY 11, 2007 (Ord. No. 2007-15)

PREPARED BY: GRAPHICS AND TECHNICAL SUPPORT SECTION  
COMMUNITY DEVELOPMENT AND ENVIRONMENTAL SERVICES DIVISION  
DATE: 2/2006 FILE: CP-2006-08.DWG

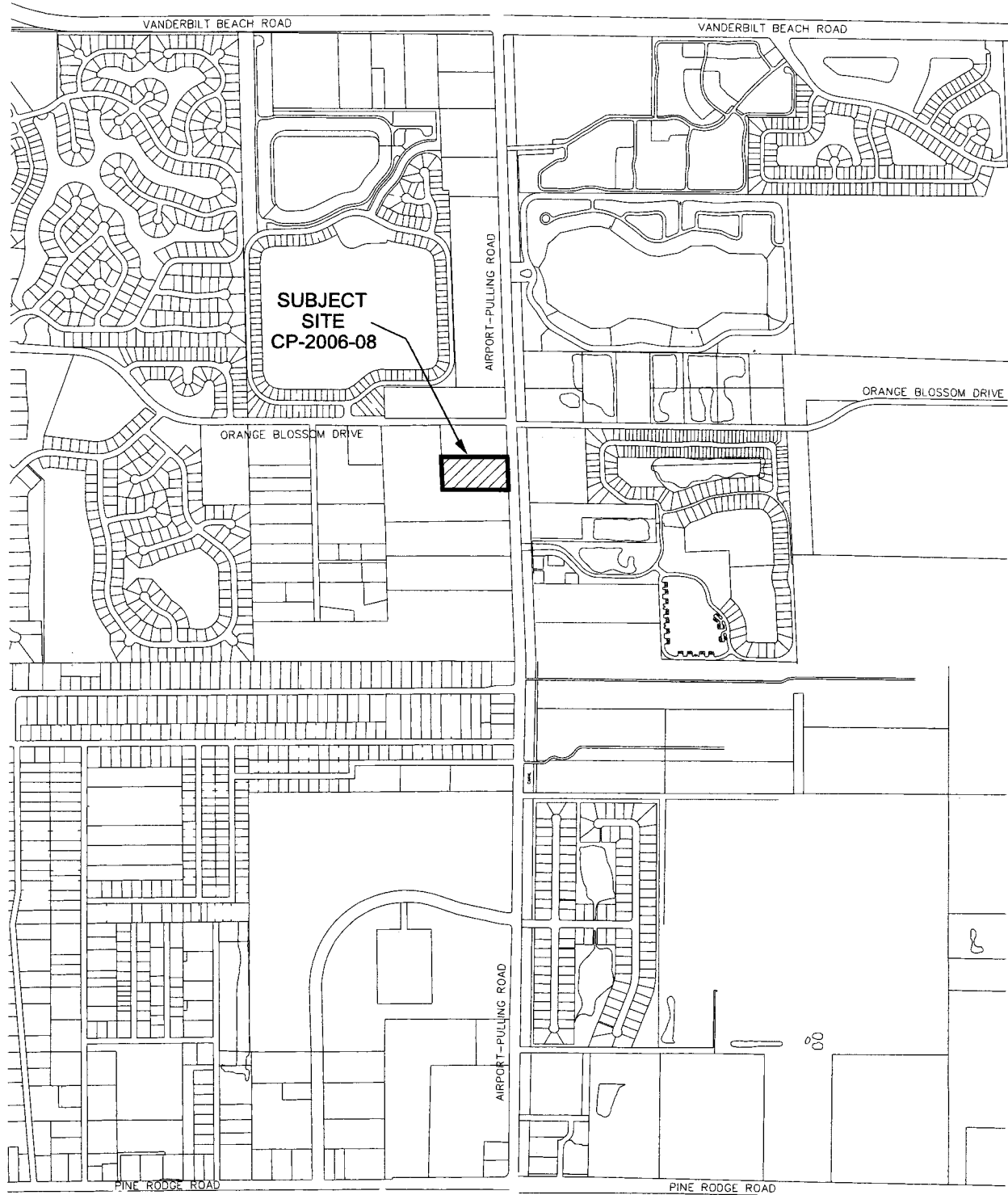
R 25 E R 26 E R 27 E R 28 E R 29 E R 30 E R 31 E R 32 E R 33 E R 34 E

T 46 S  
T 47 S  
T 48 S  
T 49 S  
T 50 S  
T 51 S  
T 52 S  
T 53 S

T 46 S  
T 47 S  
T 48 S  
T 49 S  
T 50 S  
T 51 S  
T 52 S  
T 53 S

**DRAFT**

**AIRPORT/ORANGE BLOSSOM COMMERCIAL SUBDISTRICT  
COLLIER COUNTY, FLORIDA**



PREPARED BY: GRAPHICS AND TECHNICAL SUPPORT SECTION  
COMMUNITY DEVELOPMENT AND ENVIRONMENTAL SERVICES DIVISION  
DATE: 2/2008 FILE: CP-2006-08A.DWG

