

**2006 - 2016
FUTURE LAND USE MAP
Collier County Florida**

DETAILS OF THE RLSA OVERLAY AREA ARE SHOWN ON THE FUTURE LAND USE MAP TITLED: "COLLIER COUNTY RURAL & AGRICULTURAL AREA ASSESSMENT STEWARDSHIP OVERLAY MAP"

URBAN DESIGNATION

- MIXED USE DISTRICT
- LIMBURN RESIDENTIAL SUBDISTRICT
- RESIDENTIAL DENSITY BANDS
- URBAN COASTAL FRINGE SUBDISTRICT
- URBAN RESIDENTIAL FRINGE SUBDISTRICT
- BUSINESS PARK SUBDISTRICT
- OFFICE AND INFRA COMMERCIAL SUBDISTRICT
- PLAZA NEIGHBORHOOD MIXED USE CENTER SUBDISTRICT
- RESIDENTIAL MIXED USE NEIGHBORHOOD SUBDISTRICT
- ORANGE BLOSSOM MIXED USE SUBDISTRICT
- CONVENT BEACH / COLLIER BLVD TRANSMITTAL SUBDISTRICT
- HENDERSON CREEK MIXED USE SUBDISTRICT
- RESEARCH AND TECHNOLOGY PARK SUBDISTRICT
- BUCKLEY MIXED USE SUBDISTRICT
- COMMERCIAL MIXED USE SUBDISTRICT
- DAVIS BOULEVARD / COUNTY BASH ROAD MIXED USE SUBDISTRICT
- LIVINGSTON ROAD / RADIO ROAD COMMERCIAL INFRA SUBDISTRICT
- VANDERBELT BEACH ROAD NEIGHBORHOOD COMMERCIAL SUBDISTRICT
- INDUSTRIAL DISTRICT
- BUSINESS PARK SUBDISTRICT
- RESEARCH AND TECHNOLOGY PARK SUBDISTRICT

COMMERCIAL DISTRICT

- MIXED USE ACTIVITY CENTER SUBDISTRICT
- INTERCHANGE ACTIVITY CENTER SUBDISTRICT
- LIVINGSTON / PINE RIDGE COMMERCIAL INFRA SUBDISTRICT
- RESEARCH AND TECHNOLOGY CENTER SUBDISTRICT
- LIVINGSTON ROAD / EASTWOOD LANE COMMERCIAL INFRA SUBDISTRICT
- LIVINGSTON ROAD COMMERCIAL INFRA SUBDISTRICT
- COMMERCIAL MIXED USE SUBDISTRICT
- LIVINGSTON ROAD / VETERANS MEMORIAL BLVD COMMERCIAL INFRA SUBDISTRICT
- GLADELITE / PINE RIDGE COMMERCIAL INFRA SUBDISTRICT

AGRICULTURAL / RURAL DESIGNATION

- RURAL COMMERCIAL/RURAL MIXED USE DISTRICT
- RURAL FRINGE
- MIXED USE DISTRICT
- RECREATING LANDS
- SEMIWILD LANDS
- NEUTRAL LANDS

ESTATES DESIGNATION

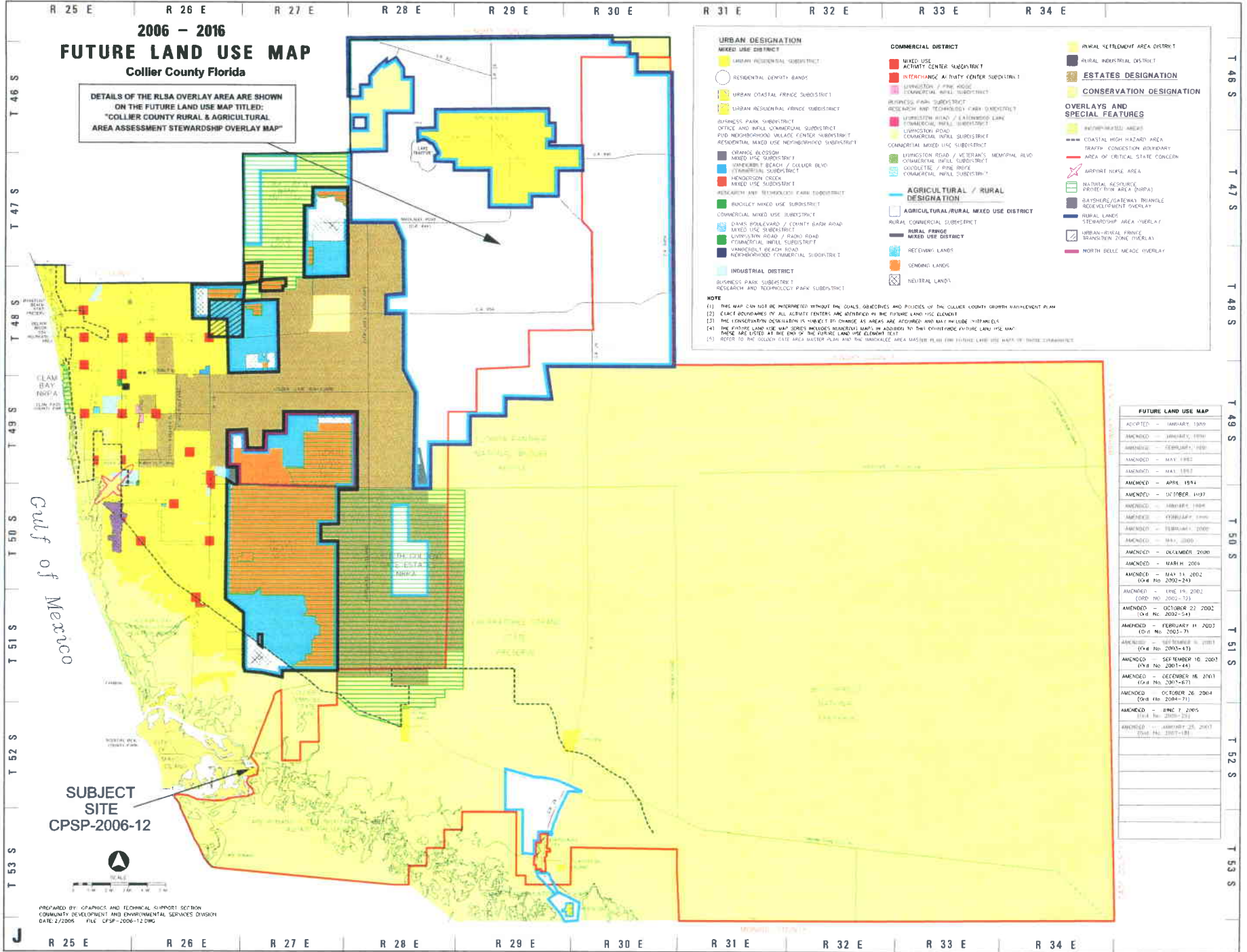
- RURAL SETTLEMENT AREA DISTRICT
- RURAL INDUSTRIAL DISTRICT

OVERLAYS AND SPECIAL FEATURES

- RECREATING AREAS
- COASTAL HIGH HAZARD AREA
- TRAFFIC CONGESTION HIGHWAY
- AREA OF CRITICAL STATE CONCERN
- AIRPORT NOISE AREA
- NATURAL RESOURCE PROTECTIVE AREA (NRP)
- BARBERS CREEK WATERSHED REDEVELOPMENT OVERLAY
- RURAL LANDS STEWARDSHIP AREA OVERLAY
- URBAN-RURAL FRINGE TRANSITION ZONE OVERLAY
- NORTH BELLE MEADOW HIGHWAY

NOTE

- (1) THIS MAP CAN NOT BE INTERPRETED WITHOUT THE GOALS, OBJECTIVES AND PRINCIPLES OF THE COLLIER COUNTY GROWTH MANAGEMENT PLAN
- (2) EXACT BOUNDARIES OF ALL ACTIVITY CENTERS ARE INTRODUCED IN THE FUTURE LAND USE ELEMENT
- (3) THE CONSERVATION DESIGNATIONS IS SUBJECT TO CHANGE AS AREAS ARE ACQUIRED AND MAY INCLUDE WETLANDS
- (4) THE FUTURE LAND USE MAP SERIES INCLUDES NUMEROUS MAPS IN ADDITION TO THE FUTURE LAND USE MAP. THESE ARE LISTED AT THE END OF THE FUTURE LAND USE ELEMENT TEST
- (5) REFER TO THE SUBJECT SITE AREA MASTER PLAN AND THE UNLICENSED AREA MASTER PLAN FOR FUTURE LAND USE MAPS OF THOSE JURISDICTIONS



FUTURE LAND USE MAP	
ADOPTED	- JANUARY 1990
AMENDED	- JANUARY 1990
AMENDED	- FEBRUARY 1990
AMENDED	- MAY 1992
AMENDED	- MAY 1997
AMENDED	- APRIL 1994
AMENDED	- OCTOBER 1997
AMENDED	- FEBRUARY 1998
AMENDED	- FEBRUARY 2000
AMENDED	- FEBRUARY 2000
AMENDED	- MAY 2000
AMENDED	- DECEMBER 2000
AMENDED	- MARCH 2006
AMENDED	- MAY 11 2002 (Ord No. 2002-24)
AMENDED	- JUNE 19 2002 (Ord No. 2002-15)
AMENDED	- OCTOBER 22 2002 (Ord No. 2002-54)
AMENDED	- FEBRUARY 11 2003 (Ord No. 2003-7)
AMENDED	- SEPTEMBER 6 2003 (Ord No. 2003-43)
AMENDED	- SEPTEMBER 10 2003 (Ord No. 2003-44)
AMENDED	- DECEMBER 16 2003 (Ord No. 2003-67)
AMENDED	- OCTOBER 26 2004 (Ord No. 2004-7)
AMENDED	- JUNE 11 2005 (Ord No. 2005-2)
AMENDED	- JANUARY 25 2007 (Ord No. 2007-18)

MARGOOD PARK - CONSERVATION DESIGNATION
COLLIER COUNTY, FLORIDA

