

# 2006 – 2016 FUTURE LAND USE MAP Collier County Florida

DETAILS OF THE RLSA OVERLAY AREA ARE SHOWN  
ON THE FUTURE LAND USE MAP TITLED:  
"COLLIER COUNTY RURAL & AGRICULTURAL  
AREA ASSESSMENT STEWARDSHIP OVERLAY MAP"

**URBAN DESIGNATION**

**MIXED USE DISTRICT**

- URBAN RESIDENTIAL SUBDISTRICT
- RESIDENTIAL DENSITY BANDS
- URBAN COASTAL FRINGE SUBDISTRICT
- URBAN RESIDENTIAL FRINGE SUBDISTRICT

BUSINESS PARK SUBDISTRICT  
OFFICE AND INFILL COMMERCIAL SUBDISTRICT  
PUD NEIGHBORHOOD VILLAGE CENTER SUBDISTRICT  
RESIDENTIAL MIXED USE NEIGHBORHOOD SUBDISTRICT

ORANGE BLOSSOM MIXED USE SUBDISTRICT  
VANDERBILT BEACH / COLLIER BLVD. COMMERCIAL SUBDISTRICT  
HENDERSON CREEK MIXED USE SUBDISTRICT  
RESEARCH AND TECHNOLOGY PARK SUBDISTRICT

BUCKLEY MIXED USE SUBDISTRICT  
COMMERCIAL MIXED USE SUBDISTRICT  
DAVIS BOULEVARD / COUNTY BARN ROAD MIXED USE SUBDISTRICT  
LIVINGSTON ROAD / RADIO ROAD COMMERCIAL INFILL SUBDISTRICT  
VANDERBILT BEACH ROAD NEIGHBORHOOD COMMERCIAL SUBDISTRICT

**INDUSTRIAL DISTRICT**

BUSINESS PARK SUBDISTRICT  
RESEARCH AND TECHNOLOGY PARK SUBDISTRICT

**COMMERCIAL DISTRICT**

- MIXED USE ACTIVITY CENTER SUBDISTRICT
- INTERCHANGE ACTIVITY CENTER SUBDISTRICT
- LIVINGSTON / PINE RIDGE COMMERCIAL INFILL SUBDISTRICT

BUSINESS PARK SUBDISTRICT  
RESEARCH AND TECHNOLOGY PARK SUBDISTRICT

LIVINGSTON ROAD / EATONWOOD LANE COMMERCIAL INFILL SUBDISTRICT  
LIVINGSTON ROAD COMMERCIAL INFILL SUBDISTRICT  
COMMERCIAL MIXED USE SUBDISTRICT  
LIVINGSTON ROAD / VETERAN'S MEMORIAL BLVD. COMMERCIAL INFILL SUBDISTRICT  
GOODLETTE / PINE RIDGE COMMERCIAL INFILL SUBDISTRICT

**AGRICULTURAL / RURAL DESIGNATION**

- AGRICULTURAL/RURAL MIXED USE DISTRICT
- RURAL COMMERCIAL SUBDISTRICT
- RURAL FRINGE MIXED USE DISTRICT
- RECEIVING LANDS
- SENDING LANDS
- NEUTRAL LANDS

**ESTATES DESIGNATION**

- RURAL SETTLEMENT AREA DISTRICT
- RURAL INDUSTRIAL DISTRICT

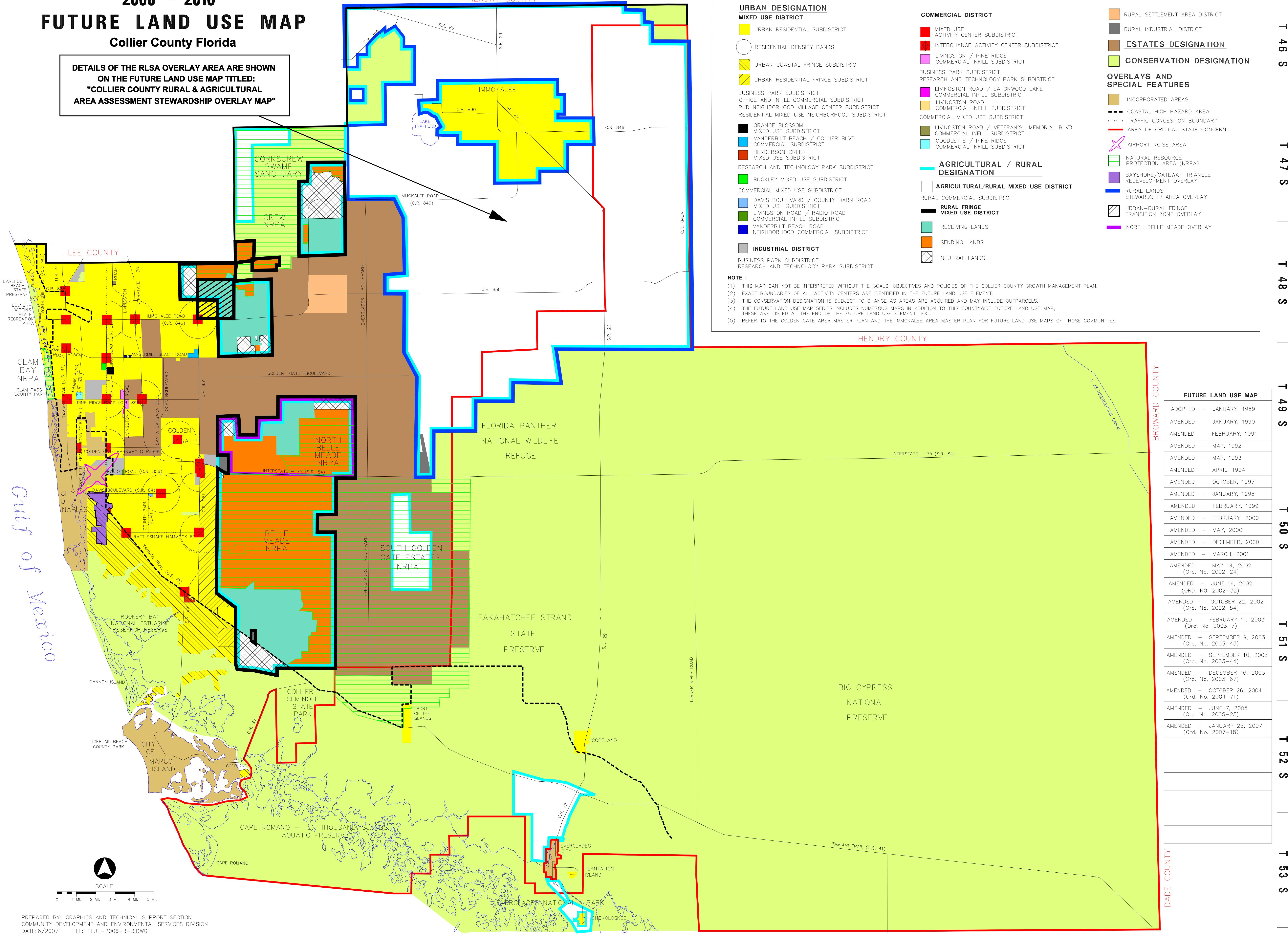
**CONSERVATION DESIGNATION**

**OVERLAYS AND SPECIAL FEATURES**

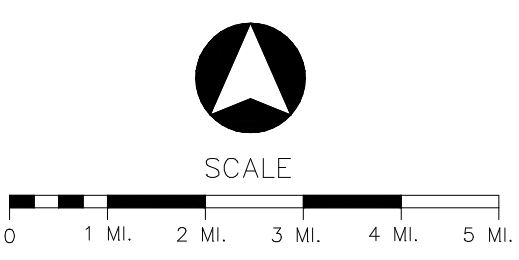
- INCORPORATED AREAS
- COASTAL HIGH HAZARD AREA
- TRAFFIC CONGESTION BOUNDARY
- AREA OF CRITICAL STATE CONCERN
- AIRPORT NOISE AREA
- NATURAL RESOURCE PROTECTION AREA (NRPA)
- BAYSHORE/GATEWAY TRIANGLE REDEVELOPMENT OVERLAY
- RURAL LANDS STEWARDSHIP AREA OVERLAY
- URBAN-RURAL FRINGE TRANSITION ZONE OVERLAY
- NORTH BELLE MEADE OVERLAY

**NOTE :**

- (1) THIS MAP CAN NOT BE INTERPRETED WITHOUT THE GOALS, OBJECTIVES AND POLICIES OF THE COLLIER COUNTY GROWTH MANAGEMENT PLAN.
- (2) EXACT BOUNDARIES OF ALL ACTIVITY CENTERS ARE IDENTIFIED IN THE FUTURE LAND USE ELEMENT.
- (3) THE CONSERVATION DESIGNATION IS SUBJECT TO CHANGE AS AREAS ARE ACQUIRED AND MAY INCLUDE OUTPARCELS.
- (4) THE FUTURE LAND USE MAP SERIES INCLUDES NUMEROUS MAPS IN ADDITION TO THIS COUNTYWIDE FUTURE LAND USE MAP; THESE ARE LISTED AT THE END OF THE FUTURE LAND USE ELEMENT TEXT.
- (5) REFER TO THE GOLDEN GATE AREA MASTER PLAN AND THE IMMOKALEE AREA MASTER PLAN FOR FUTURE LAND USE MAPS OF THOSE COMMUNITIES.



FUTURE LAND USE MAP	
ADOPTED	- JANUARY, 1989
AMENDED	- JANUARY, 1990
AMENDED	- FEBRUARY, 1991
AMENDED	- MAY, 1992
AMENDED	- MAY, 1993
AMENDED	- APRIL, 1994
AMENDED	- OCTOBER, 1997
AMENDED	- JANUARY, 1998
AMENDED	- FEBRUARY, 1999
AMENDED	- FEBRUARY, 2000
AMENDED	- MAY, 2000
AMENDED	- DECEMBER, 2000
AMENDED	- MARCH, 2001
AMENDED	- MAY 14, 2002 (Ord. No. 2002-24)
AMENDED	- JUNE 19, 2002 (ORD. NO. 2002-32)
AMENDED	- OCTOBER 22, 2002 (Ord. No. 2002-54)
AMENDED	- FEBRUARY 11, 2003 (Ord. No. 2003-7)
AMENDED	- SEPTEMBER 9, 2003 (Ord. No. 2003-43)
AMENDED	- SEPTEMBER 10, 2003 (Ord. No. 2003-44)
AMENDED	- DECEMBER 16, 2003 (Ord. No. 2003-67)
AMENDED	- OCTOBER 26, 2004 (Ord. No. 2004-71)
AMENDED	- JUNE 7, 2005 (Ord. No. 2005-25)
AMENDED	- JANUARY 25, 2007 (Ord. No. 2007-18)



PREPARED BY: GRAPHICS AND TECHNICAL SUPPORT SECTION  
COMMUNITY DEVELOPMENT AND ENVIRONMENTAL SERVICES DIVISION  
DATE: 6/2007 FILE: FLUE-2006-3-3.DWG

T 46 S  
T 47 S  
T 48 S  
T 49 S  
T 50 S  
T 51 S  
T 52 S  
T 53 S

T 46 S  
T 47 S  
T 48 S  
T 49 S  
T 50 S  
T 51 S  
T 52 S  
T 53 S