



District One Project Management

417540-5
SR 29 from CR 846 to
North of New Market Road

417540-6
SR 29 from South of
New Market Road to SR 82

July 2024

**MOVING FLORIDA
FORWARD** 
Infrastructure Initiative



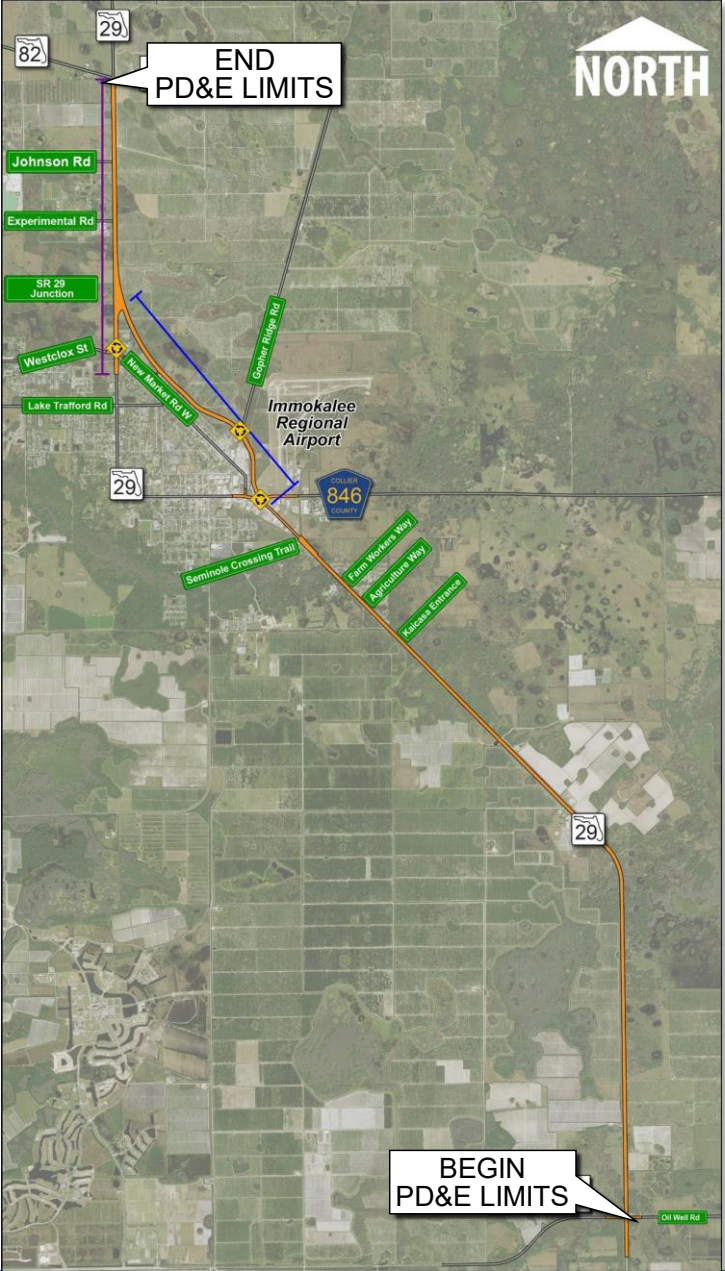
Agenda

- Project History
- Design Refinements
- Previous Engagement
- Project Status





Limits of the PD&E



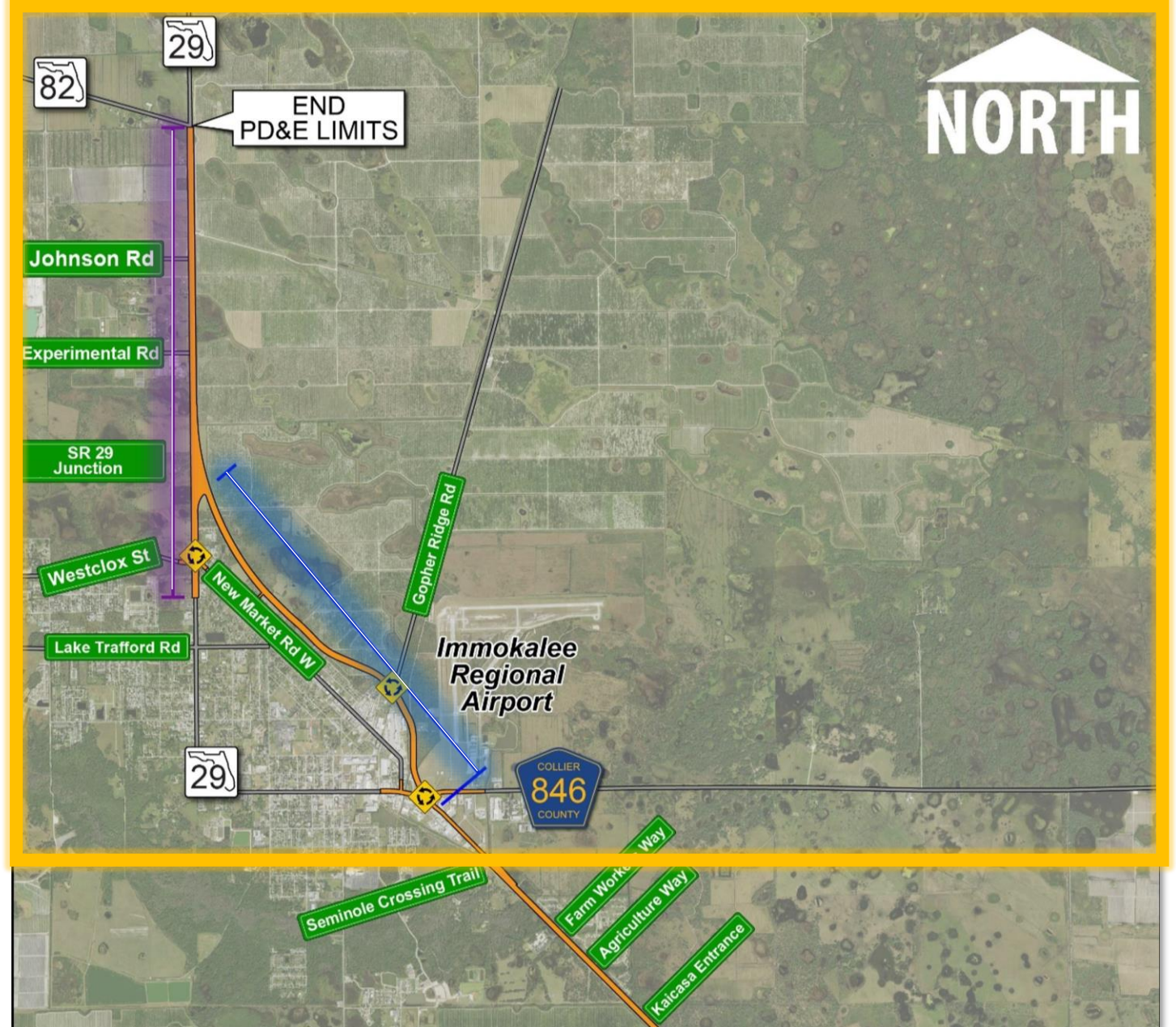
Design Refinements

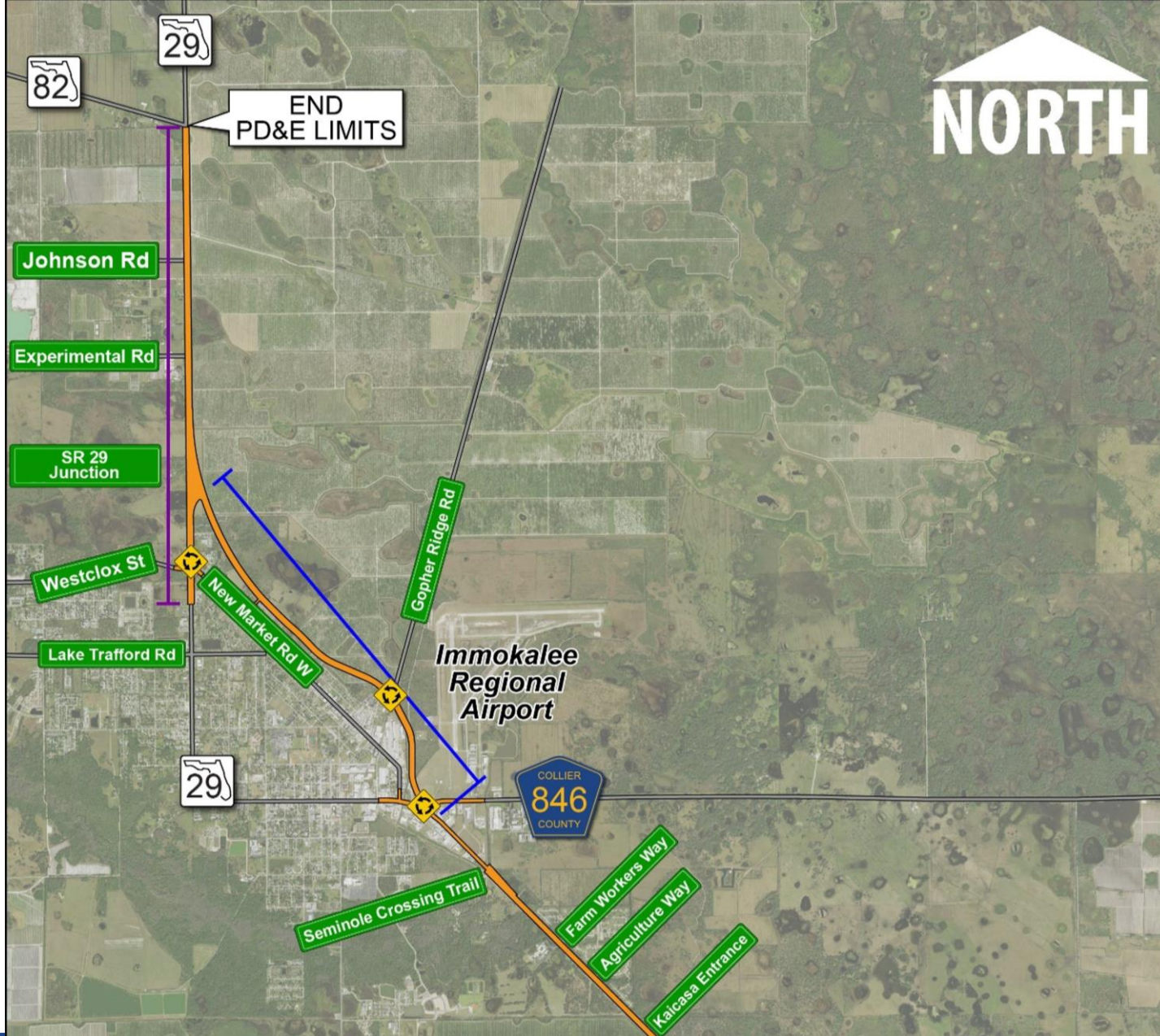
Refinements have only been made to the

Purple Segment

and the

Blue Segment.

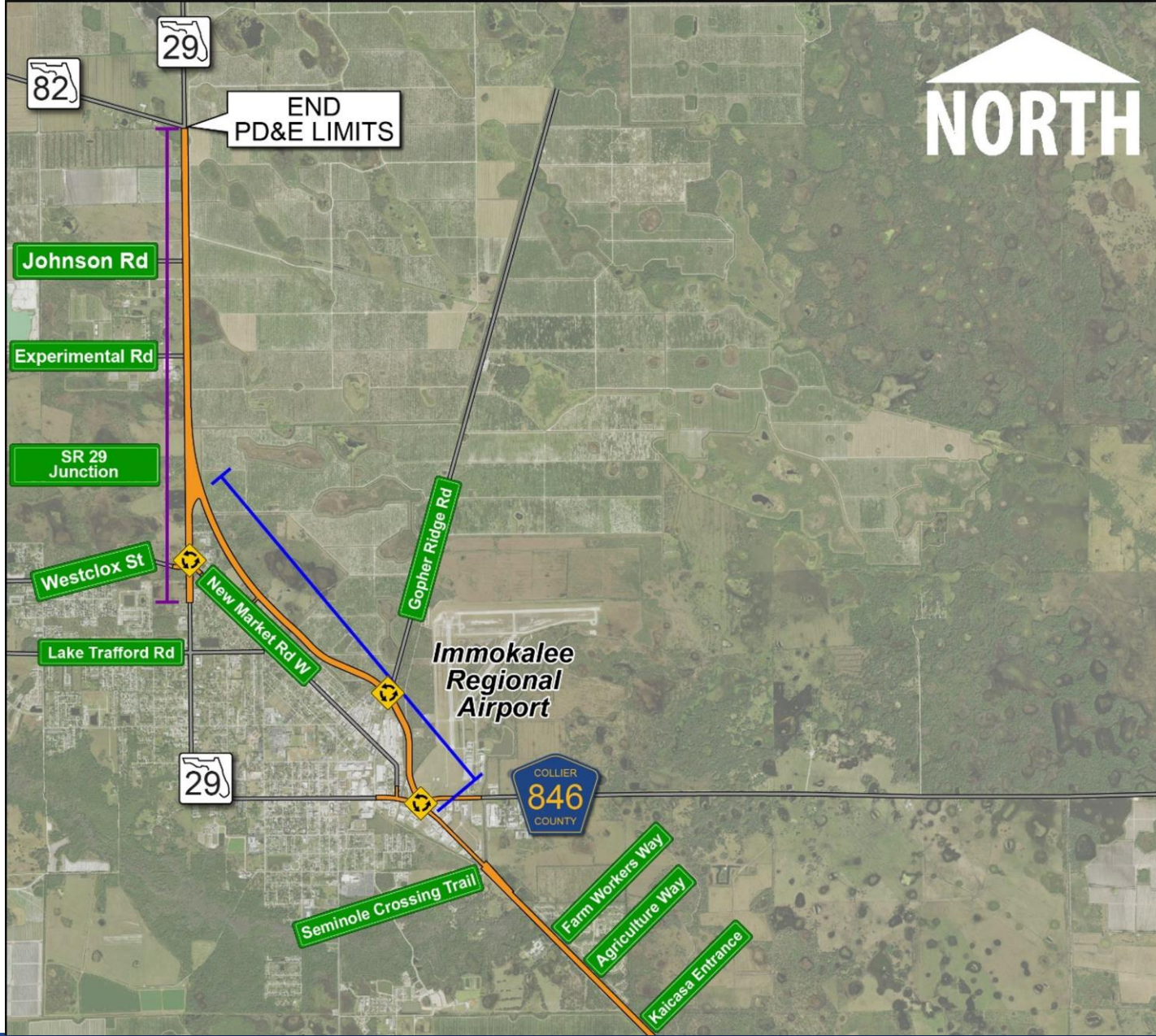






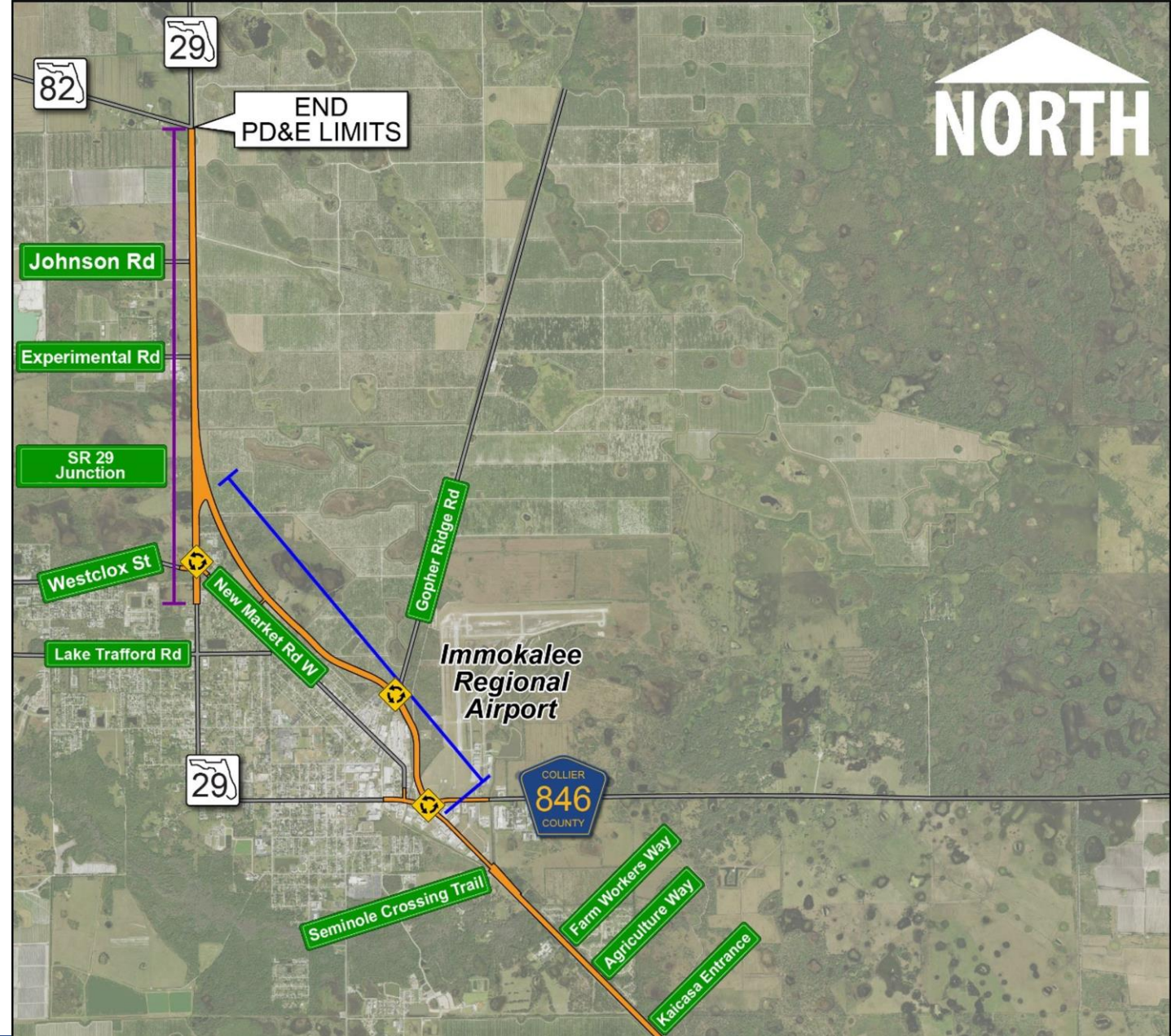


Immokalee Airport Park



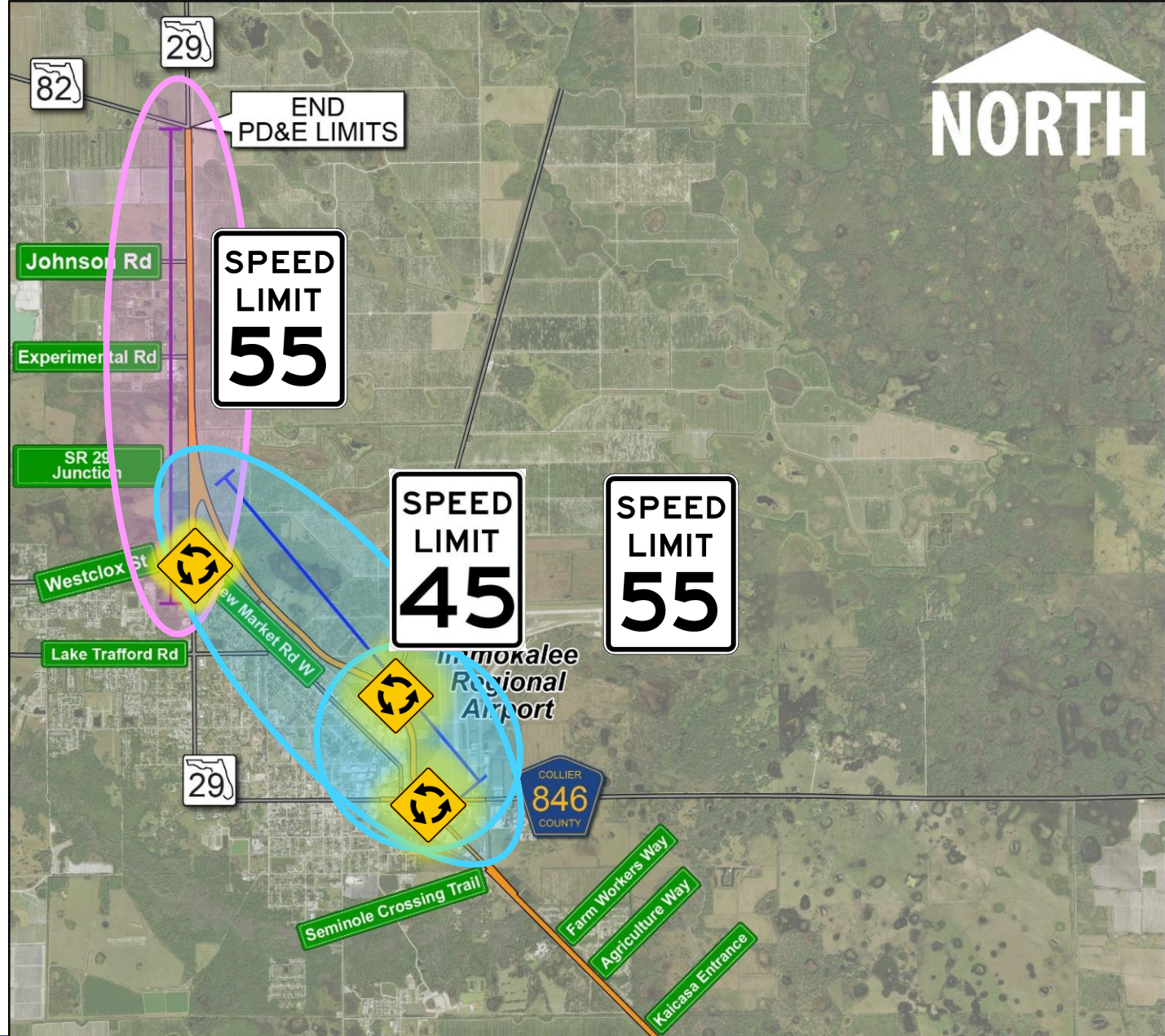
MOVING FLORIDA FORWARD

Infrastructure Initiative



Design Refinements

- 12-foot shared use path (blue)
- 10-foot shared use path (purple)
- Roundabouts at
 - CR 846
 - Gopher Ridge Road
 - New Market Road
- Widen lanes by one foot (12 feet)
- Design speeds
 - 45-55 miles per hour (blue)
 - 55 miles per hour (purple)
- Nine pond sites



Completion of Study

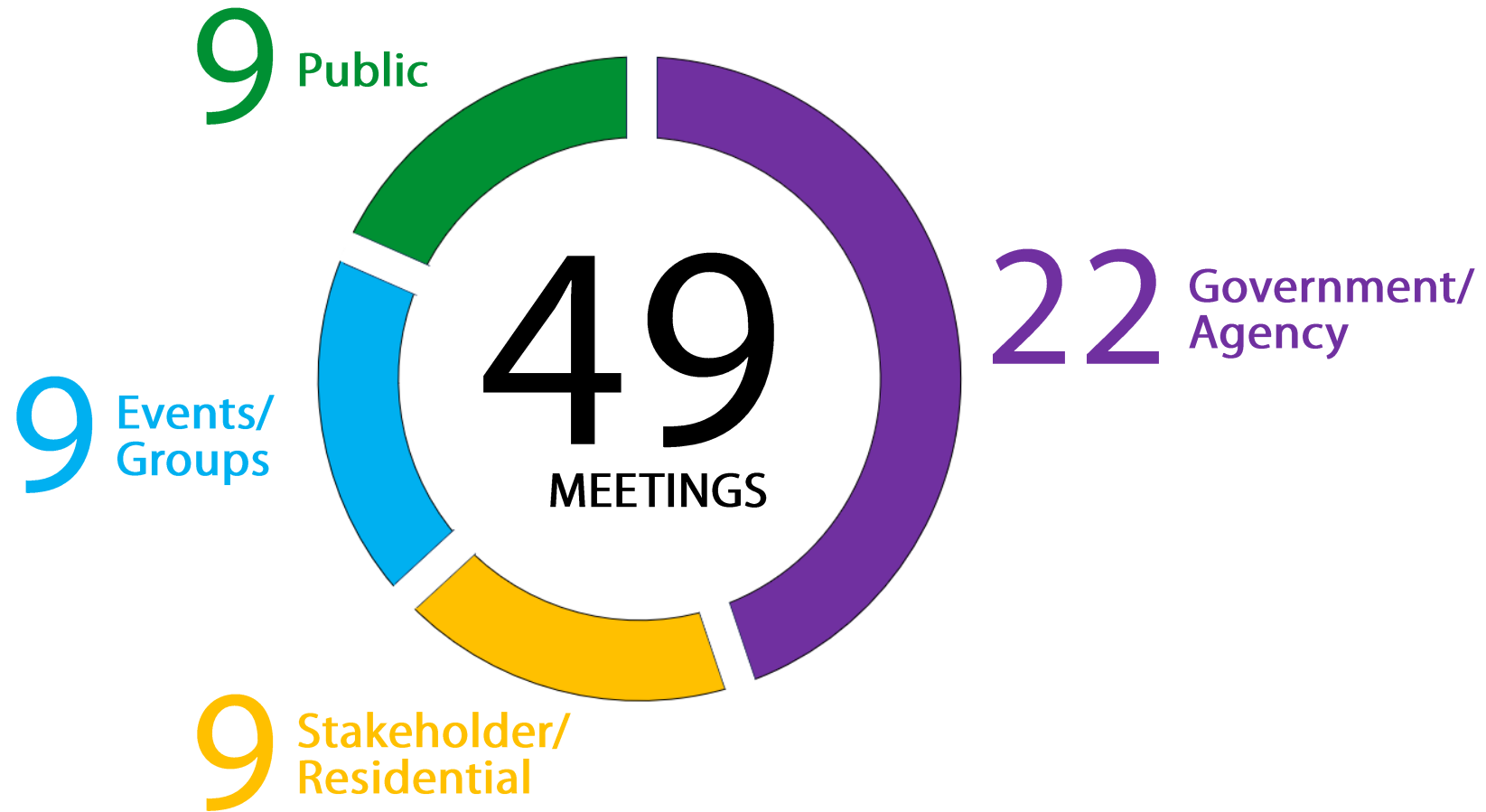


Naples Daily News
PART OF THE USA TODAY NETWORK

Previous Public Meetings

- Agency Purpose and Need Scoping Meeting October 18, 2007
- Public Purpose and Need Scoping Meeting October 18, 2007
- Corridor Public Workshop August 7, 2008
- Alignments Public Workshop June 23, 2009
- Public Alternatives Scoping Meeting February 17, 2010
- Agency Alternatives Scoping Meeting February 18, 2010
- Stakeholder Advisory Committee Meetings 2007 – 2004
- Alternatives Public Workshop #1 April 3, 2014
- Alternatives Public Workshop #2 November 9, 2017
- **Public Hearing November 15, 2018**

SR 29 Engagement



Project Newsletters

2007

2008

2010

SR 29 NEWS
Project Development & Environment Study

The Florida Department of Transportation (FDOT) is conducting a Project Development and Environment (PD&E) study on a segment of State Road (SR) 29 that runs from Oil Well Road to SR 82 in Collier County. The existing roadway network needs improvement because of continuing population and employment growth in Immokalee. The project study area and study schedule are shown inside this newsletter.

PROJECT OVERVIEW

The SR 29 PD&E Study began in June 2007. It is developing alternative concepts to widen this existing two-lane segment of SR 29 to four lanes and also is considering possible corridors that bypass downtown Immokalee. There will be two community workshops (the 2007 and early 2009) before the formal public hearing is held (end of 2009). The study is expected to be completed in summer 2010.

VISION GENERAL DEL PROYECTO

El Estudio del Proyecto de Desarrollo y del Medio Ambiente de la SR 29 comenzó en junio del 2007. El estudio evaluará la ampliación del segmento existente de dos carriles de la SR 29 a cuatro carriles y el estudio de corredores (alternos) que se desvíen del centro de Immokalee. Hay dos reuniones públicas y comunitarias (otoño del 2007 y temprano en el año del 2009) antes de la audiencia pública formal (la última parte del 2009). El estudio del Proyecto de Desarrollo y del Medio Ambiente se haya completado en el verano de 2010.

www.sr29collier.com

SR 29 NEWS
Project Development & Environment Study

STUDY AREA EXPANDED **ÁREA DEL ESTUDIO AMPLIADA**

The Florida Department of Transportation (FDOT), District One, is conducting a Project Development and Environment (PD&E) study for the segment of State Road (SR) 29 from Oil Well Road to SR 82 in Collier County. The existing roadway network needs improvement because of continuing population and employment growth in and around Immokalee. As a result of comments received at the first stakeholder advisory committee meeting the original study area has been expanded. The project study area boundary in green and the new expanded study area boundary in orange.

STUDY OVERVIEW

Proposed roadway improvements will increase capacity on SR 29 between Oil Well Road and SR 82 in Collier County. The study will develop alternative concepts to widen the existing two-lane segment of SR 29 to four lanes. It also will consider a possible corridor(s) that bypass downtown Immokalee.

VISION GENERAL DEL ESTUDIO

Las mejores propuestas para esta carretera incrementarían la capacidad en la SR 29 entre la Oil Well Road y la SR 82 en el Condado de Collier. El estudio desarrollará conceptos alternos para ensanchar el existente segmento de dos carriles de la SR 29 a cuatro carriles. También considerará un posible(s) corredor(es) que se desvíen del centro de Immokalee.

www.sr29collier.com

SR 29 NEWS
Project Development & Environment Study

As the Florida Department of Transportation (FDOT) continues its State Road (SR) 29 Project Development & Environment study, the project team has identified four alignments for proposed transportation improvements to the SR 29 corridor. Illustrations with more description about each alignment are presented inside this newsletter.

Next Steps

The next step in the study is to develop SR 29 improvements within each of the four alignments. Each alignment is approximately 600 feet wide, allowing for different alternatives within that. The project team will focus on opportunities to improve safety, increase Immokalee's economic growth, and improve emergency evacuation.

Public involvement, along with the participation of local governments and cooperating agencies, assists the project team as it develops and brings alternatives forward for further evaluation. The team will present preliminary alternatives for public review at an alternative workshop later this year. With comments received from the department will refine and present the preferred alternative to improvements to SR 29 at a formal public hearing in 2012.

Citizens are encouraged to participate in this process and provide comments on project alternatives and issues that are important to them. Comments can be made through the project website at www.sr29collier.com or at upcoming meetings. (Please schedule on back page.) The next public meeting is an Alternative Design Meeting scheduled for February 17, 2010 from 5 to 7 p.m. at the Immokalee One-Stop Career Center, 720 South 9th Street in Immokalee. This is an informal open house where you can view the project team's progress to date on the development of alternatives for SR 29 improvements.

www.sr29collier.com

SR 29 NEWS
Project Development & Environment Study

March/April 2012

The Florida Department of Transportation (FDOT) is conducting a Project Development and Environment (PD&E) study for the segment of State Road (SR) 29 from Oil Well Road to SR 82 in Collier County. The existing roadway network needs improvement because of continuing population and employment growth in and around Immokalee. As a result of comments received at the first stakeholder advisory committee meeting the original study area has been expanded. The project study area boundary in green and the new expanded study area boundary in orange.

STUDY OVERVIEW

Proposed roadway improvements will increase capacity on SR 29 between Oil Well Road and SR 82 in Collier County. The study will develop alternative concepts to widen the existing two-lane segment of SR 29 to four lanes. It also will consider a possible corridor(s) that bypass downtown Immokalee.

VISION GENERAL DEL ESTUDIO

Las mejores propuestas para esta carretera incrementarían la capacidad en la SR 29 entre la Oil Well Road y la SR 82 en el Condado de Collier. El estudio desarrollará conceptos alternos para ensanchar el existente segmento de dos carriles de la SR 29 a cuatro carriles. También considerará un posible(s) corredor(es) que se desvíen del centro de Immokalee.

www.sr29collier.com

SR 29 PD&E Study
From Oil Well Road to SR 82

FPID NO: 417540 1 22 01 / FAP NO: 3911 022 P

Project Overview

The Florida Department of Transportation (FDOT), District One, invites you to a project update for the SR 29 Project Development and Environment (PD&E) Study from Oil Well Road to SR 82 in Collier County. This study is evaluating widening the road from two to four-lanes to address future capacity needs. The Project Update is to inform the public about recent refinements and provide the opportunity to ask questions and express their views.

Design Refinements

- 12-foot shared use path (blue segment)
- 10-foot shared use path (purple segment)
- Roundabout Designs: CR 846, Gopher Ridge Rd, and New Market Road
- Widen travel lanes by one foot (blue segment)
- Adjust design speeds to 45-55 miles per hour (blue segment) and unified to 55 miles per hour (purple segment)
- Add nine pond sites

Upcoming Office Hour

The FDOT will have an online office hour that will include a viewing of the project video and a live question-and-answer component with the project team.

Register in Advance
<https://bitly.ws/3fFYL>
Tuesday, April 23, 2024 from 6 p.m. - 7 p.m.

For more information, please visit the project website:
fdot.gov/sr29collier



Legend

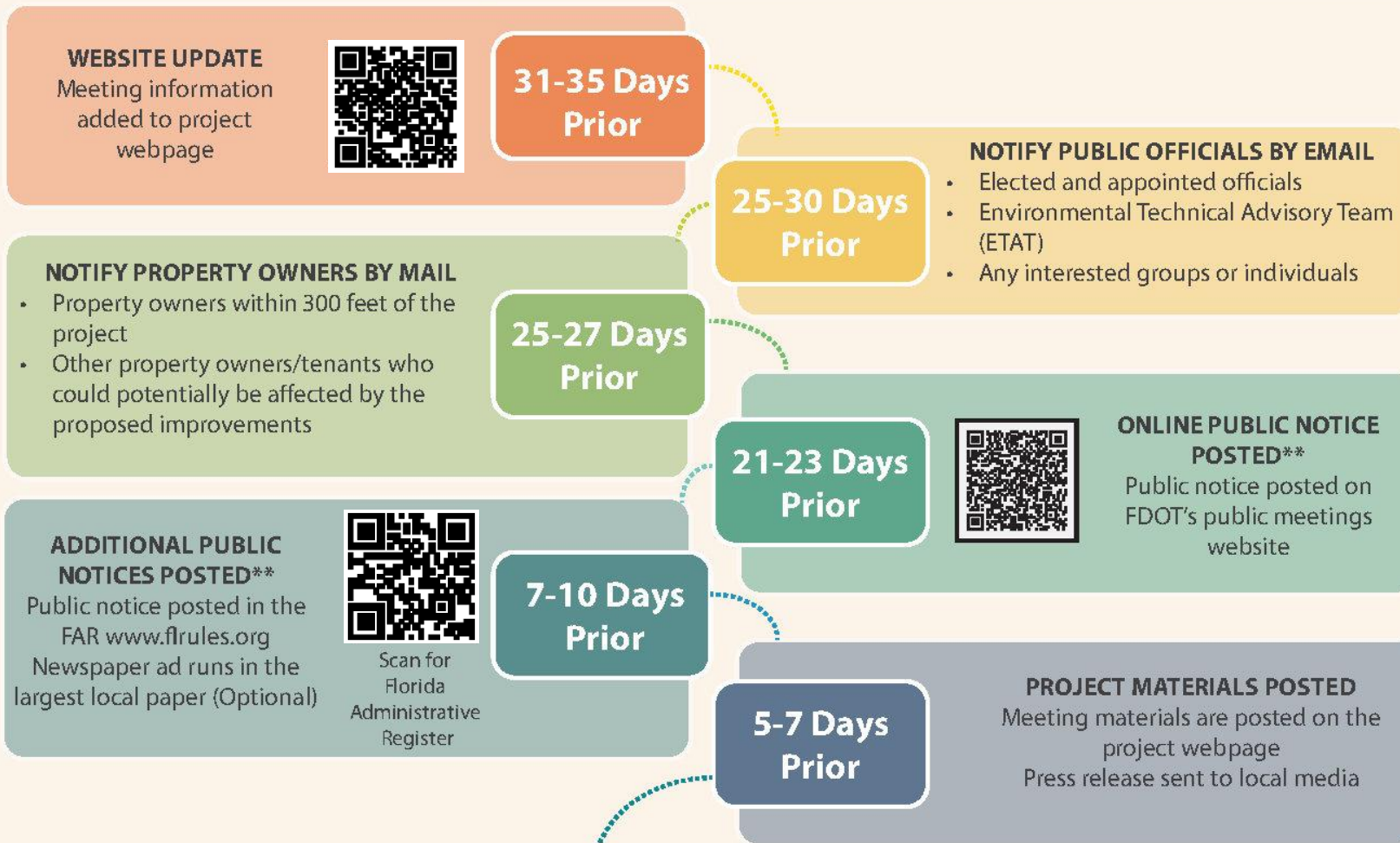
- PD&E Preferred Alternative
- Roundabouts
- Concurrent Design Sections
- South of CR 846 to SR 29 Bypass Jurisdiction
- South of New Market Road West to SR 82

FDOT En Español
Karina Della-Sera, 863-519-2750, dellaseradot.state.fl.us

FDOT solicits public participation without regard to race, color, national origin, age, sex, religion, disability, or family status. People who require special accommodations under the Americans with Disabilities Act or who require translation services (free of charge) should contact Cynthia Sykes, District One Title VI Coordinator, at (863) 519-2287, or email at Cynthia.Sykes@dot.state.fl.us at least seven days prior to the event.

FDOT solicits public participation without regard to race, color, national origin, age, sex, religion, disability, or family status. People who require special accommodations under the Americans with Disabilities Act or who require translation services (free of charge) should contact Cynthia Sykes, District One Title VI Coordinator, at (863) 519-2287, or email at Cynthia.Sykes@dot.state.fl.us at least seven days prior to the event.

Meeting Notification Guidelines



**Required by federal law or state statute

Project Status

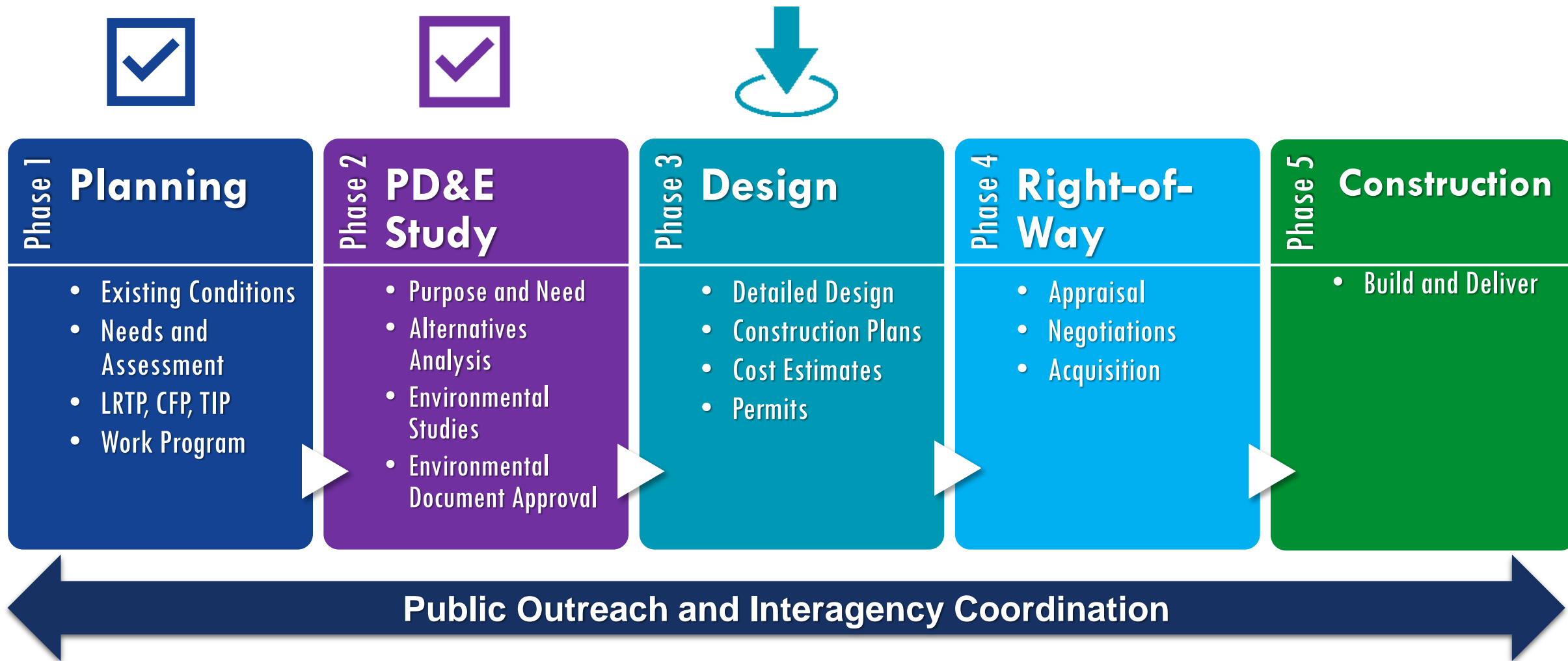
<https://www.swflroads.com/project/417540-5>



<https://www.swflroads.com/project/417540-6>



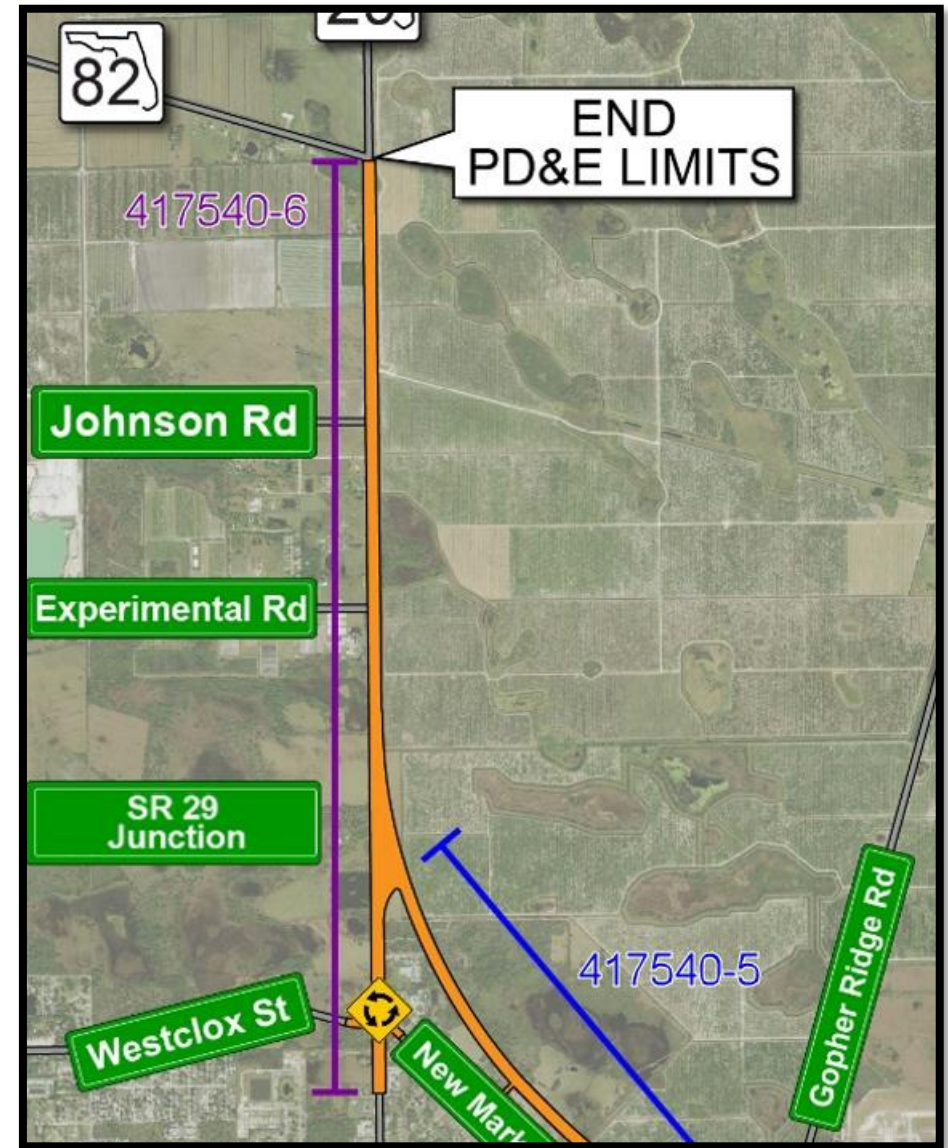
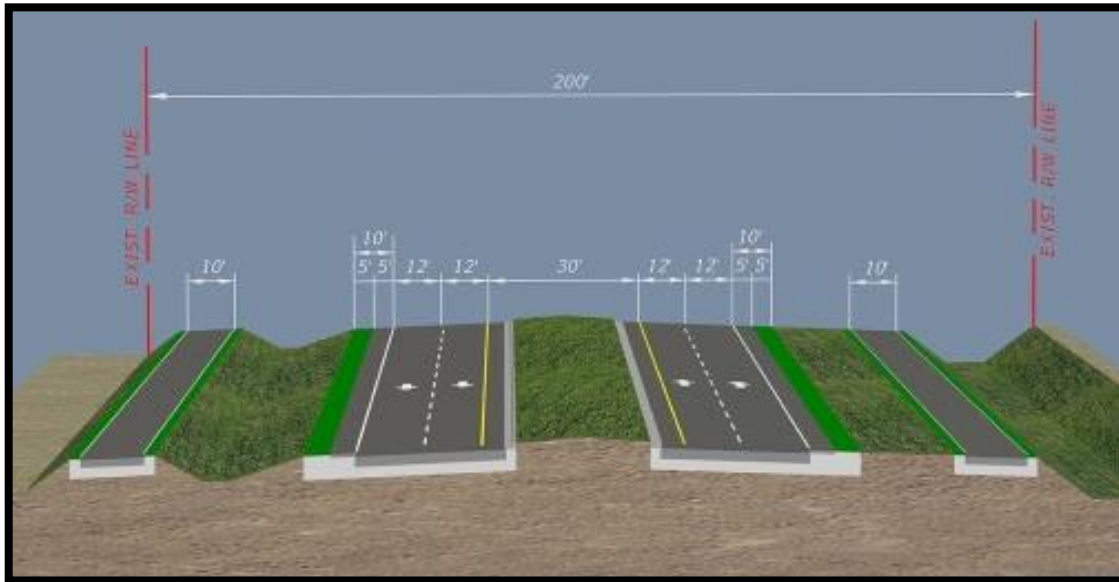
Transportation Project Development Process



417540-6

SR 29

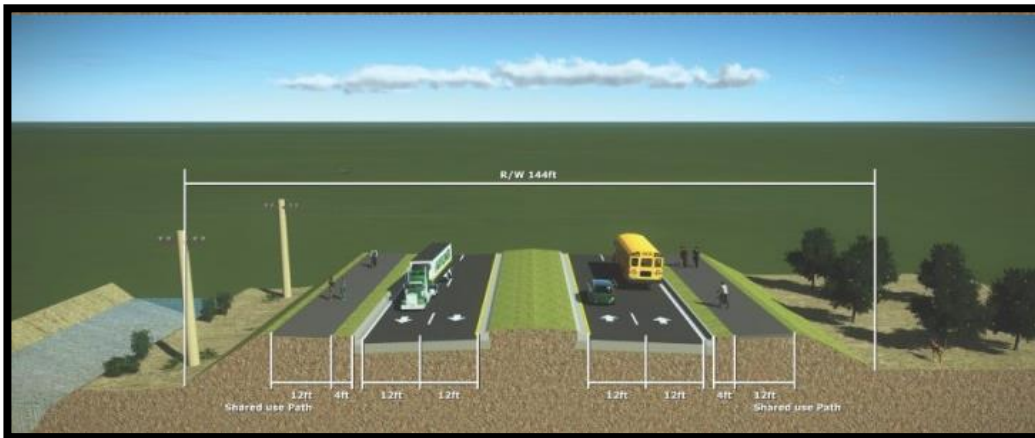
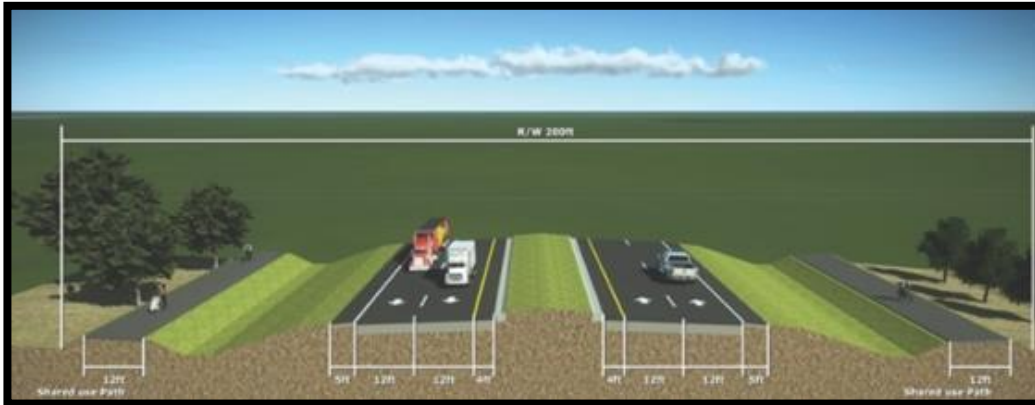
from New Market Rd To SR 82










417540-5

SR 29

from CR 846 E to North of New Market Road N



Current Schedule

Phase	2023	2024	2025	2026	2027
Project Development & Environment (PD&E) Study		  			
Final Design				 TBD	
Right-of-Way Acquisition			 <div style="background-color: #0070C0; color: white; padding: 2px 10px; display: inline-block;">TBD</div>		
Construction					TBD

Key



Newsletter



Public Meeting



LDCA

SEE ORANGE, SLOW DOWN!



**KEEP OUR
WORKERS
SAFE**

WHILE DRIVING IN
WORK ZONES



Safety, Questions and Contact Information

417540-5

Sean Pugh, PE

FDOT Project Management Engineer

District 1

(239) 225-1925

Sean.Pugh@dot.state.fl.us

417540-6

Chris Speese

Consultant Project Manager

District 1

(239) 225-1973

Christopher.Speese@dot.state.fl.us