

CONSERVATION COLLIER PROPOSED 2024 TARGET PROTECTION AREAS

Prepared for: The Conservation Collier Land
Acquisition and Advisory Committee

July 3, 2024

Conservation Collier Cycle 12 Target Protection Mailing Areas (TPMA)

TABLE OF CONTENTS

# on Page 3 Overview Map	Description	Page #
N/A	2024 Target Protection Mailing Areas	3
N/A	Conservation Collier Preserves and Target Protection Mailing Areas Overview Map	4
N/A	Conservation Collier Preserves and Target Protection Mailing Areas Overview Map by Commission District	5
1	Caracara Prairie Preserve	6
2	Pepper Ranch Preserve	8
3	Immokalee	10
4	Railhead Scrub Preserve	12
5	Rivers Road Preserve	14
6	Brewers Landing	16
7	Redroot Preserve	18
8	Panther Walk Preserve	20
9	Gordon River Greenway	22
10	Nancy Payton Preserve	24
11	North Belle Meade Preserve	26
12	I-75 & Everglades Blvd.	28
13	Dr. Robert H. Gore III Preserve	30
14	Bayshore Area	32
15	Rattlesnake Hammock Preserve	34
16	Shell Island Preserve	36
17	McIlvane Marsh Preserve	38
18	Marco Island	40

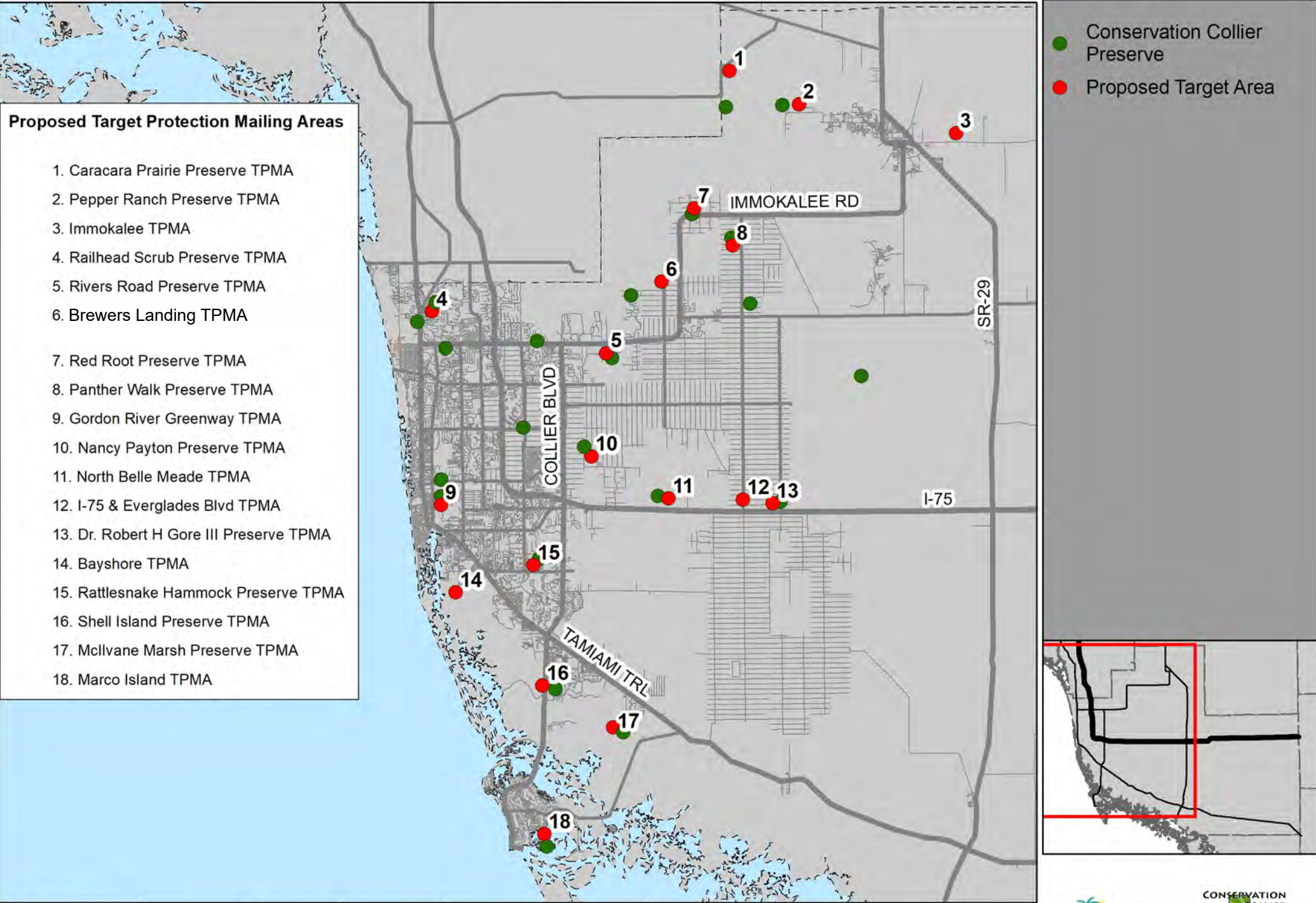
Supplement 1 - Selection Strategy

2024 Target Protection Area Parcel Selection Strategy	42
Conservation Collier Potential Acquisition Lands 2019	43
Distribution of CLIP Priority Natural Communities in Collier County	44
2024 Target Protection Mailing Area Priority Natural Communities Present	45

2024 Target Protection Mailing Areas (TPMA)

# on Page 3 Overview Map	Target Protection Mailing Area	Parcels	Acreage	2021 TPMA (Cycle 10)	2022 TPMA (Cycle 11)	2023 TPMA (Cycle 12)
14	Bayshore Area	3	71.6	YES	YES	YES
6	Brewers Landing	1	2.7	No	No	No
1	Caracara Prairie	7	240.4	YES	YES	YES
13	Dr. Robert H. Gore III Preserve	84	190.4	YES	YES	YES
9	Gordon River	5	4.3	YES	YES	YES
12	I-75 & Everglades	182	551.3	No	No	YES
3	Immokalee	6	1,610.4	No	No	YES
18	Marco Island	36	18.8	No	YES	YES
17	McIlvane Marsh	7	365.5	YES	YES	YES
10	Nancy Payton	39	274.9	YES	YES	YES
11	North Belle Meade Preserve	34	262.1	No	YES	No
8	Panther Walk	35	72.9	YES	YES	YES
2	Pepper Ranch	3	74.4	YES	YES	YES
4	Railhead Scrub Preserve	2	18.8	YES	YES	
15	Rattlesnake Hammock Preserve	1	4.2	YES	YES	YES
7	Redroot Preserve	2	24.0	No	No	YES
5	Rivers Road Preserve	22	89.4	YES	YES	YES
16	Shell Island Preserve	5	144.9	YES	YES	YES
	TOTAL	474	4,021.0			

Conservation Collier Preserves and Target Protection Mailing Areas Overview



- Proposed Target Protection Mailing Areas**
1. Caracara Prairie Preserve TPMA
 2. Pepper Ranch Preserve TPMA
 3. Immokalee TPMA
 4. Railhead Scrub Preserve TPMA
 5. Rivers Road Preserve TPMA
 6. Brewers Landing TPMA
 7. Red Root Preserve TPMA
 8. Panther Walk Preserve TPMA
 9. Gordon River Greenway TPMA
 10. Nancy Payton Preserve TPMA
 11. North Belle Meade TPMA
 12. I-75 & Everglades Blvd TPMA
 13. Dr. Robert H Gore III Preserve TPMA
 14. Bayshore TPMA
 15. Rattlesnake Hammock Preserve TPMA
 16. Shell Island Preserve TPMA
 17. McIlvane Marsh Preserve TPMA
 18. Marco Island TPMA

- Conservation Collier Preserve
- Proposed Target Area



Conservation Collier Preserves and Target Protection Mailing Areas Overview with Commissioner Districts

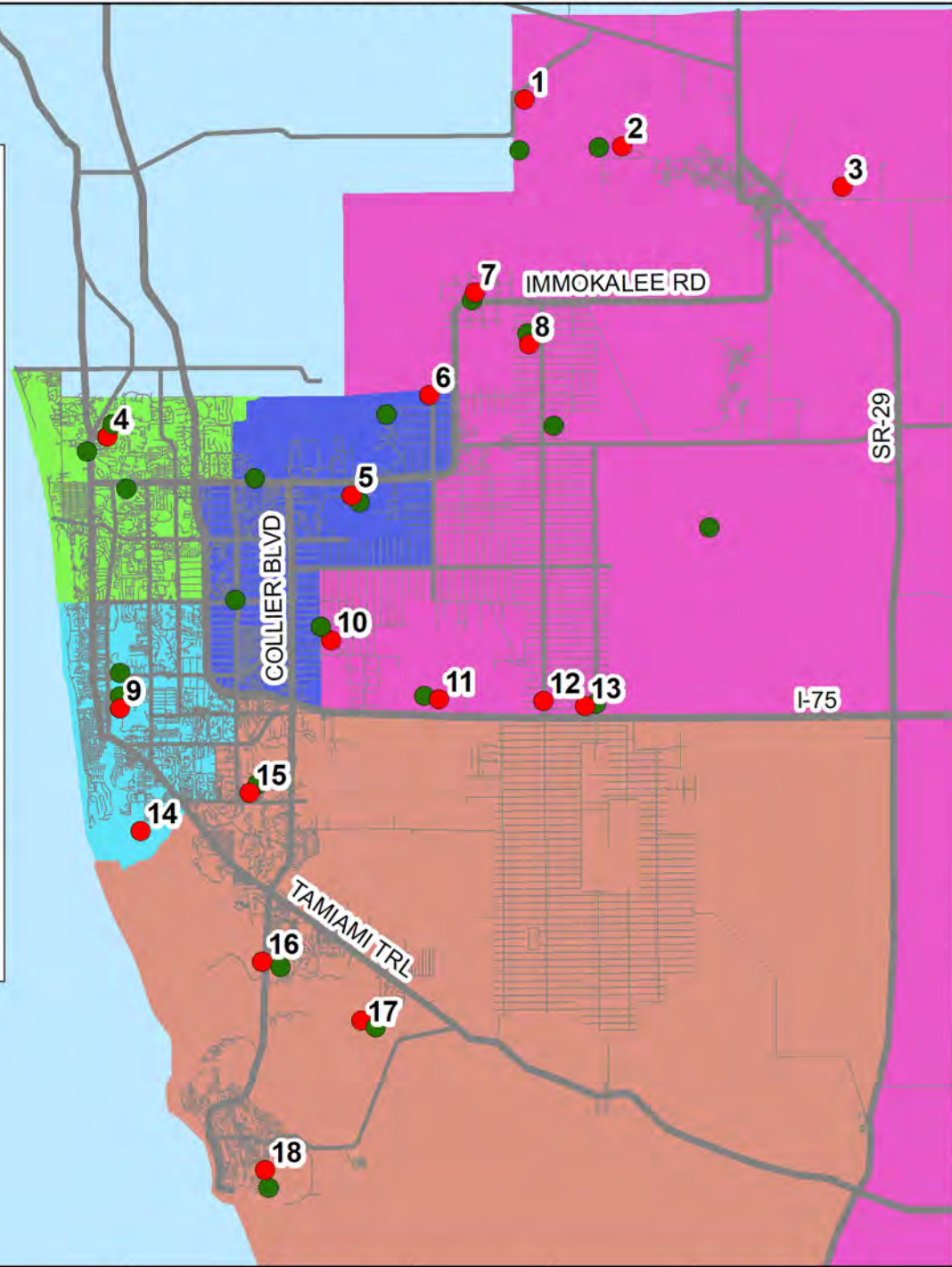
Proposed Target Protection Mailing Areas

1. Caracara Prairie Preserve TPMA
2. Pepper Ranch Preserve TPMA
3. Immokalee TPMA
4. Railhead Scrub Preserve TPMA
5. Rivers Road Preserve TPMA
6. Brewer Tract TPMA
7. Red Root Preserve TPMA
8. Panther Walk Preserve TPMA
9. Gordon River Greenway TPMA
10. Nancy Payton Preserve TPMA
11. North Belle Meade TPMA
12. I-75 & Everglades Blvd TPMA
13. Dr. Robert H Gore III Preserve TPMA
14. Bayshore TPMA
15. Rattlesnake Hammock Preserve TPMA
16. Shell Island Preserve TPMA
17. McIlvane Marsh Preserve TPMA
18. Marco Island TPMA

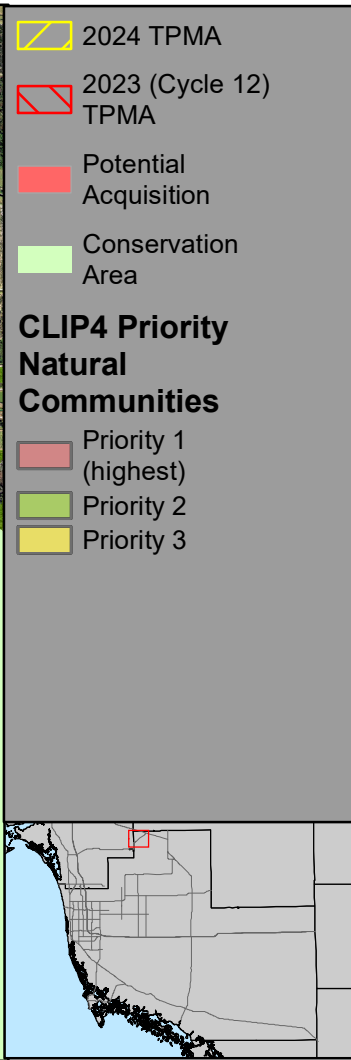
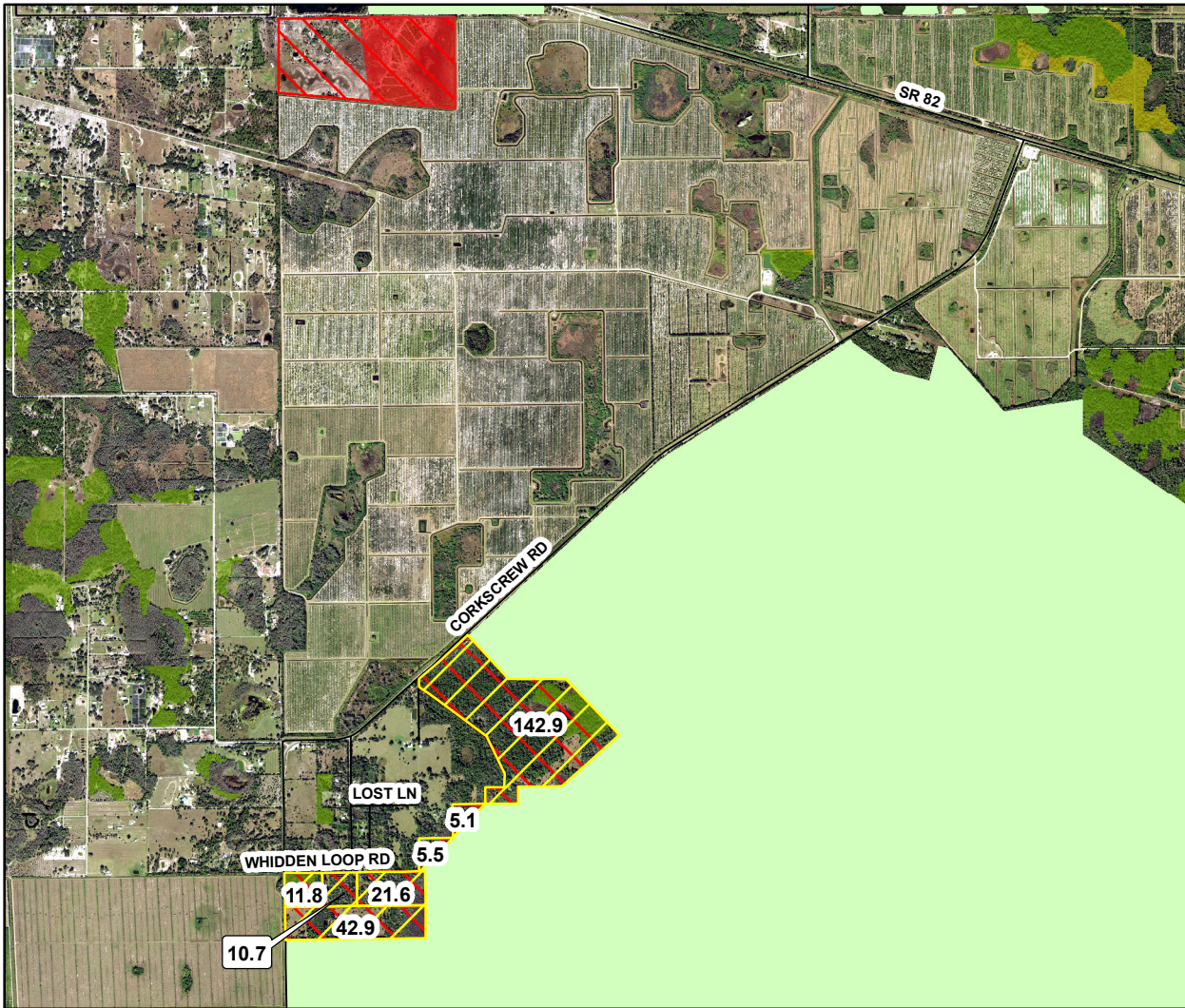
- Conservation Collier Preserve
- Proposed Target Area

Commission District

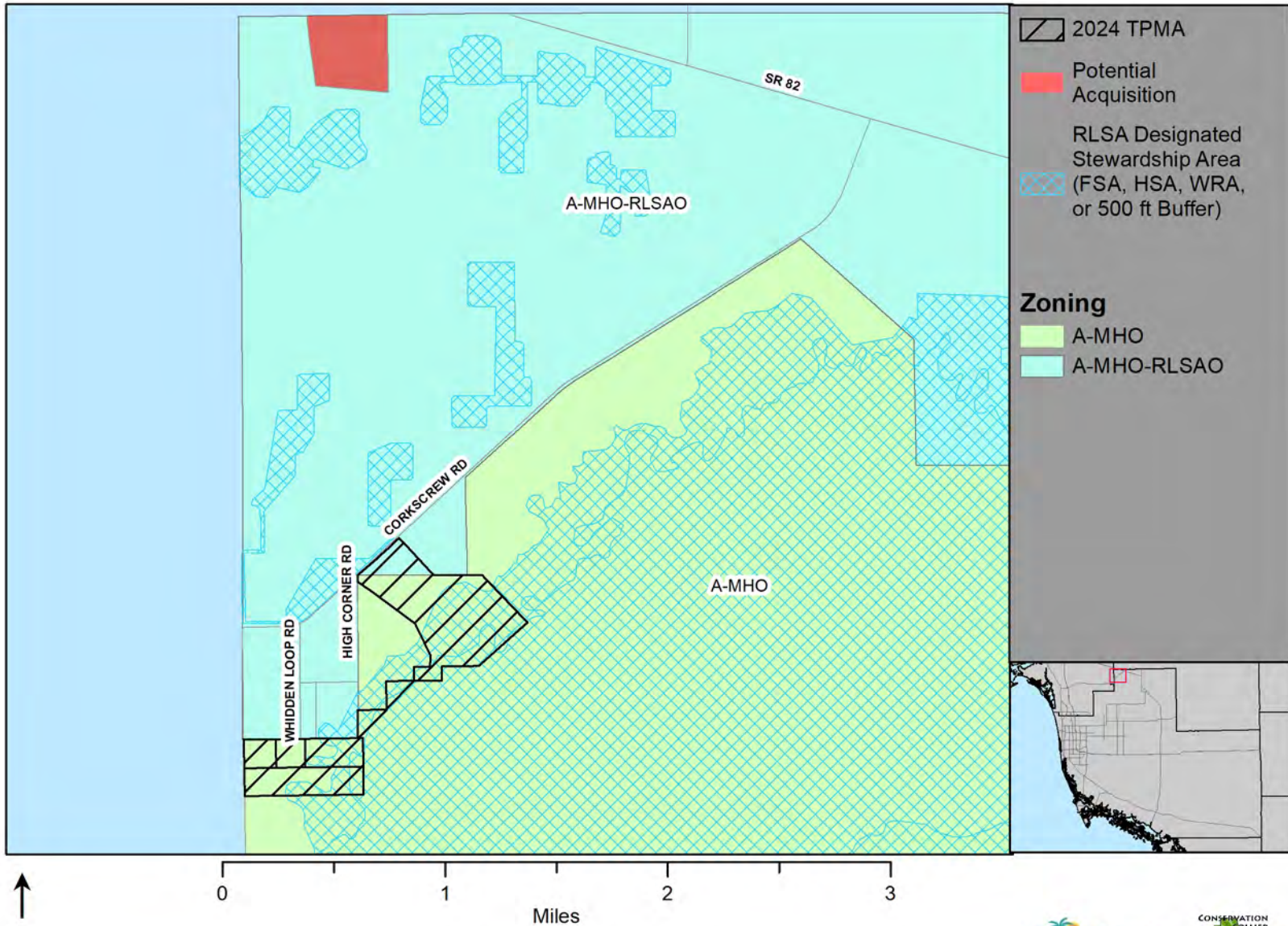
- 1
- 2
- 3
- 4
- 5



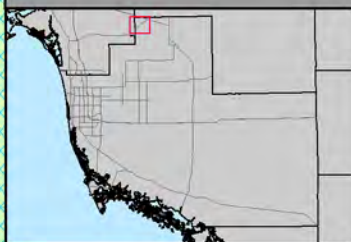
TPMA: Caracara Prairie Preserve
 Parcels: 7; Acreage: 240.4; Priority Habitats: Mesic Flatwoods



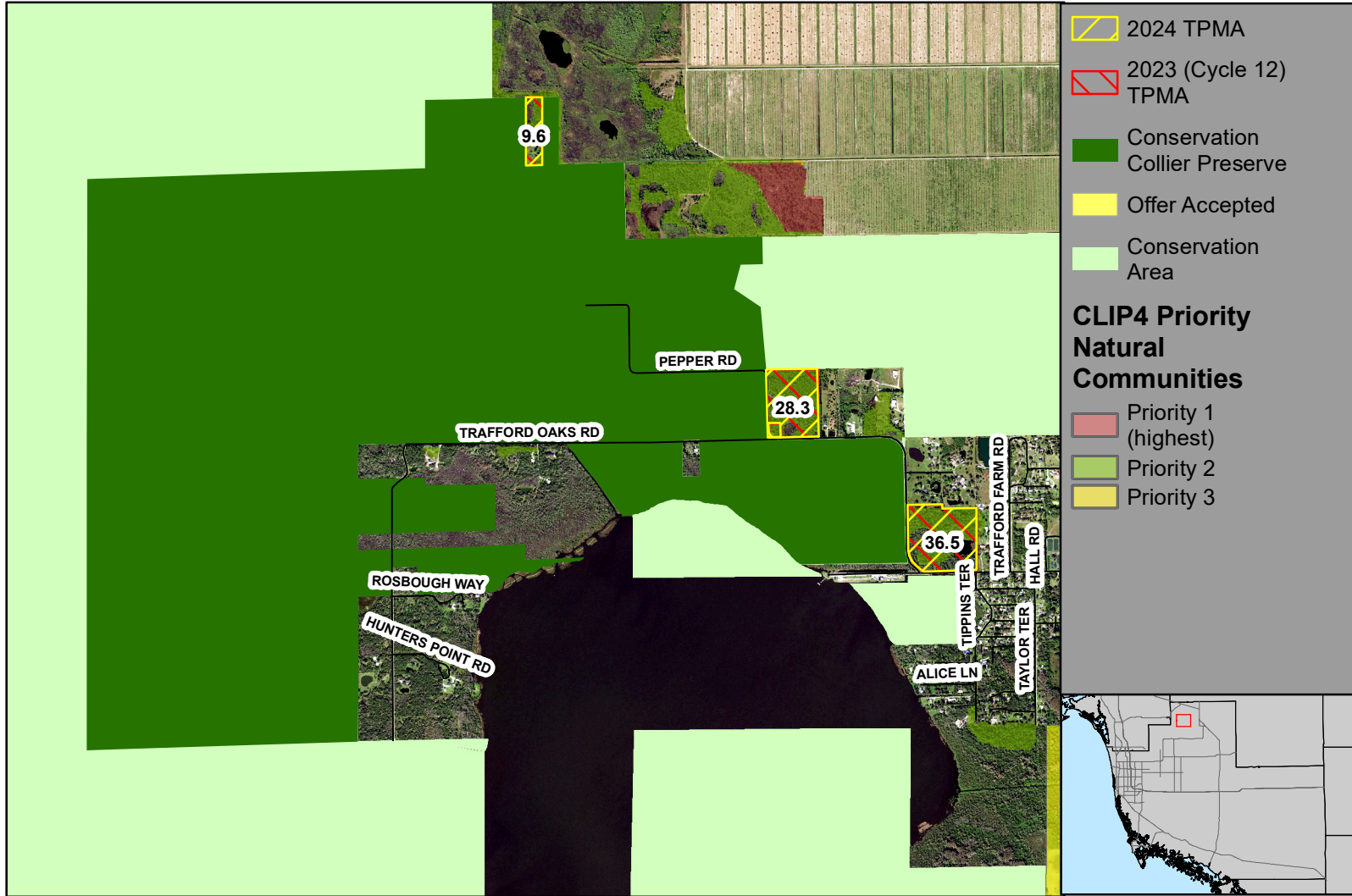
Caracara Prairie Preserve TPMA Zoning



- 2024 TPMA
- Potential Acquisition
- RLSA Designated Stewardship Area (FSA, HSA, WRA, or 500 ft Buffer)
- RLSA Designated Stewardship Area (FSA, HSA, WRA, or 500 ft Buffer)
- Zoning**
- A-MHO
- A-MHO-RLSAO



TPMA: Pepper Ranch Preserve
 Parcels: 3; Acreage: 74.4; Priority Habitats: Mesic Flatwoods, Hydric Pine Flatwoods



2024 TPMA

2023 (Cycle 12) TPMA

Conservation Collier Preserve

Offer Accepted

Conservation Area

CLIP4 Priority Natural Communities

Priority 1 (highest)

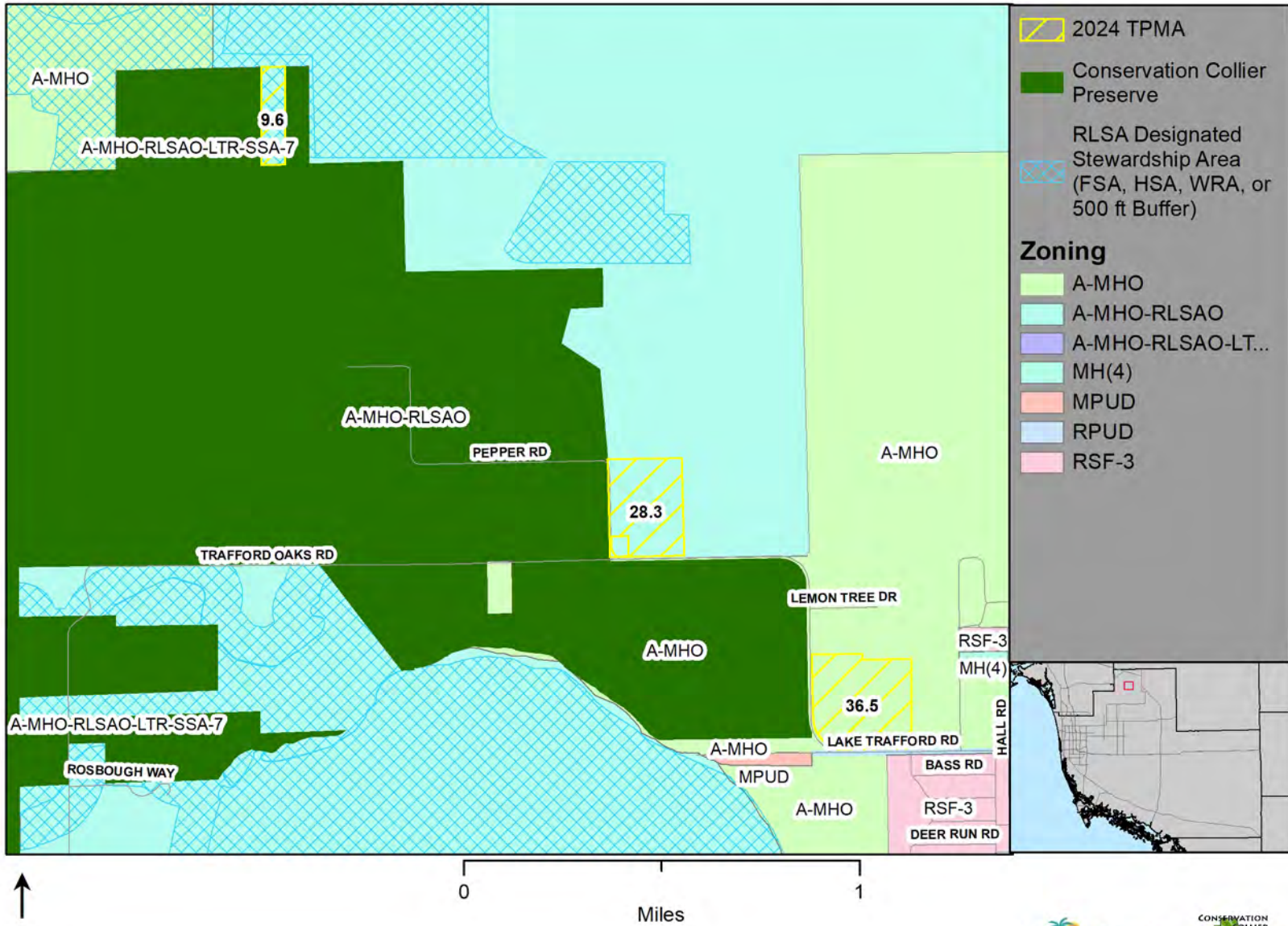
Priority 2

Priority 3

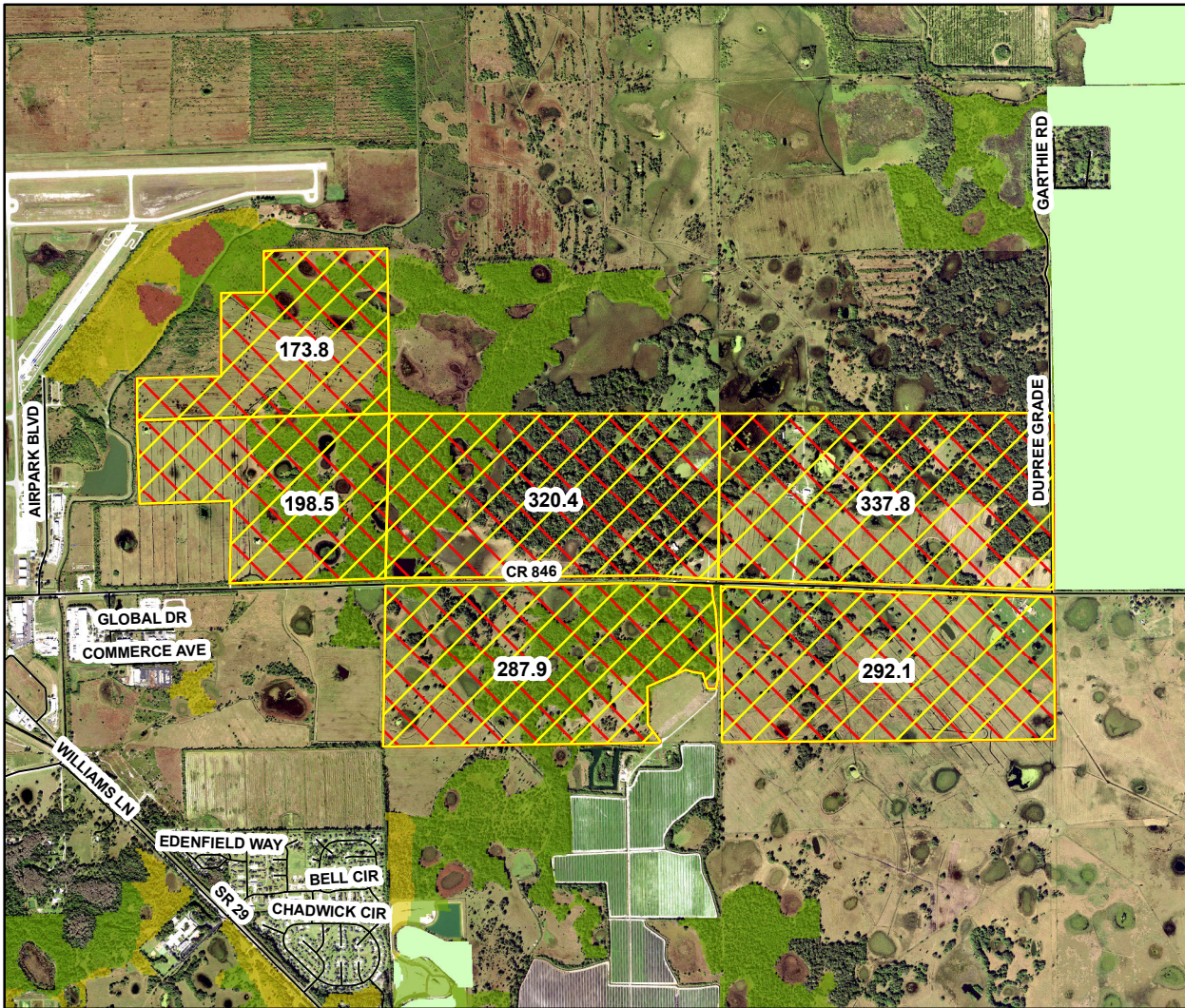


0 1 2
Miles

Pepper Ranch Preserve TPMA Zoning

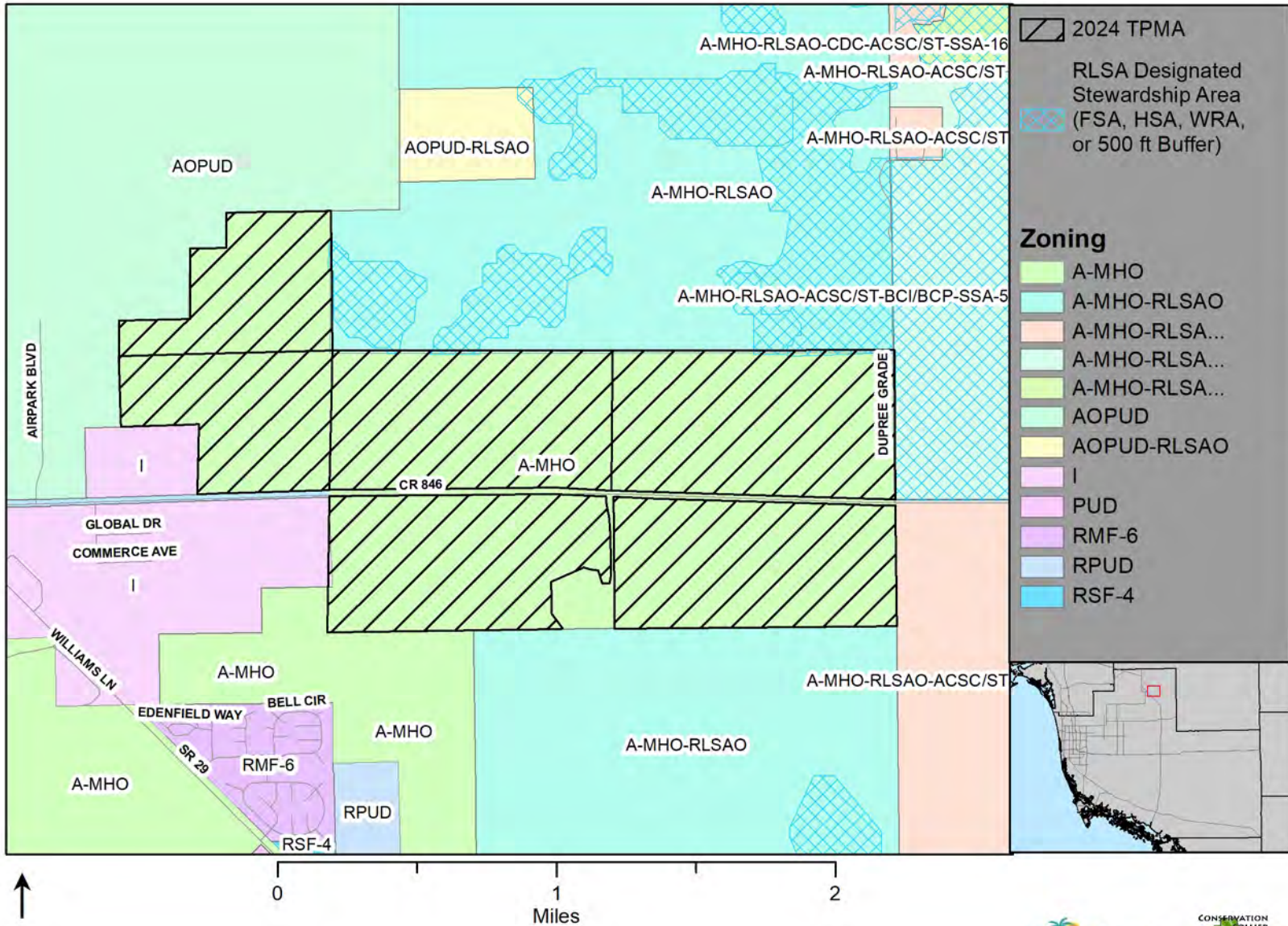


TPMA: Immokalee
 Parcels: 6; Acreage: 1,610.4; Priority Habitats: Mesic Flatwoods

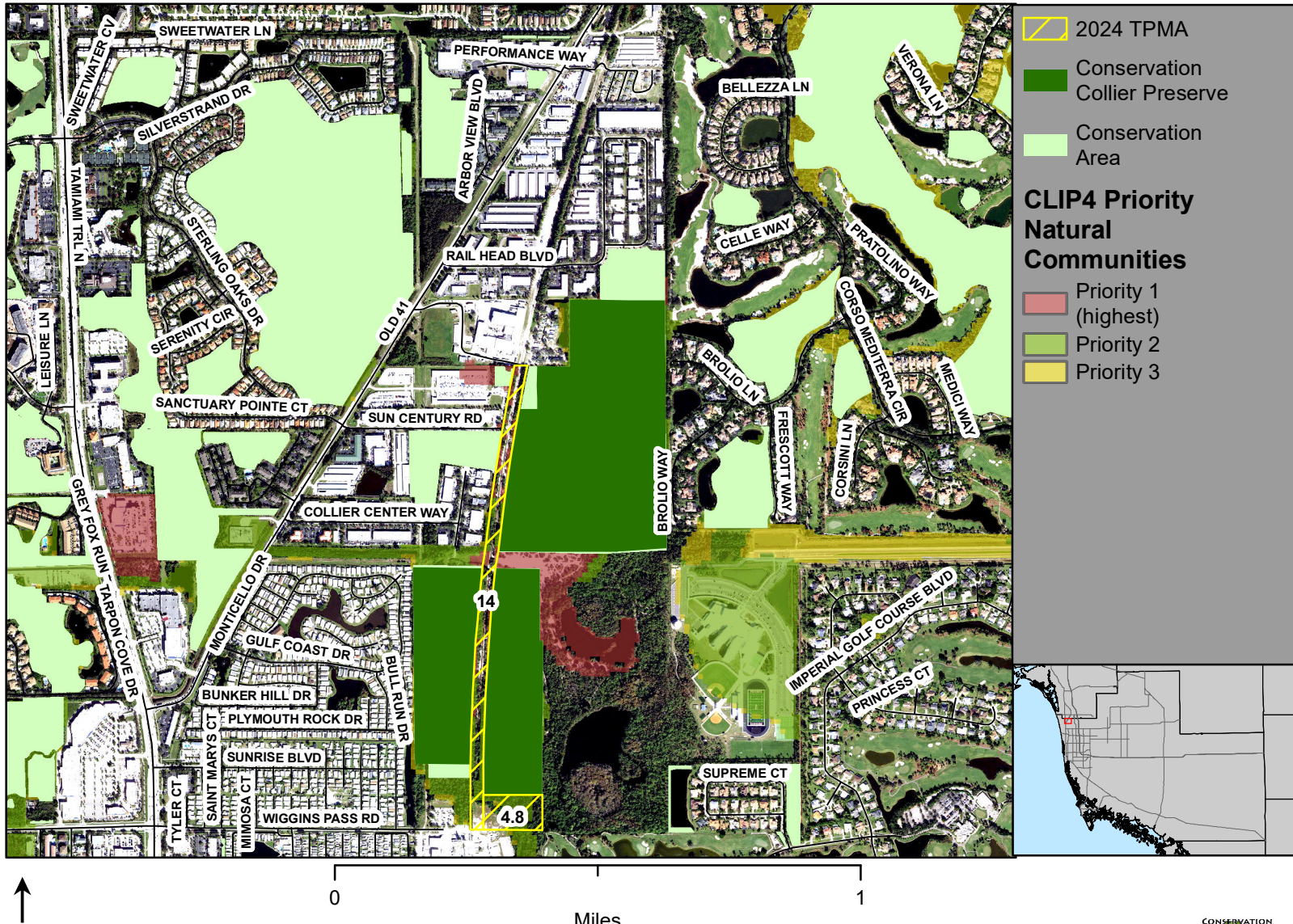




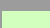
0 1 2
 Miles

Immokalee TPMA Zoning



TPMA: Railhead Scrub Preserve
 Parcels: 2; Acreage: 18.8; Priority Habitats: Scrub, Hydric Pine Flatwoods

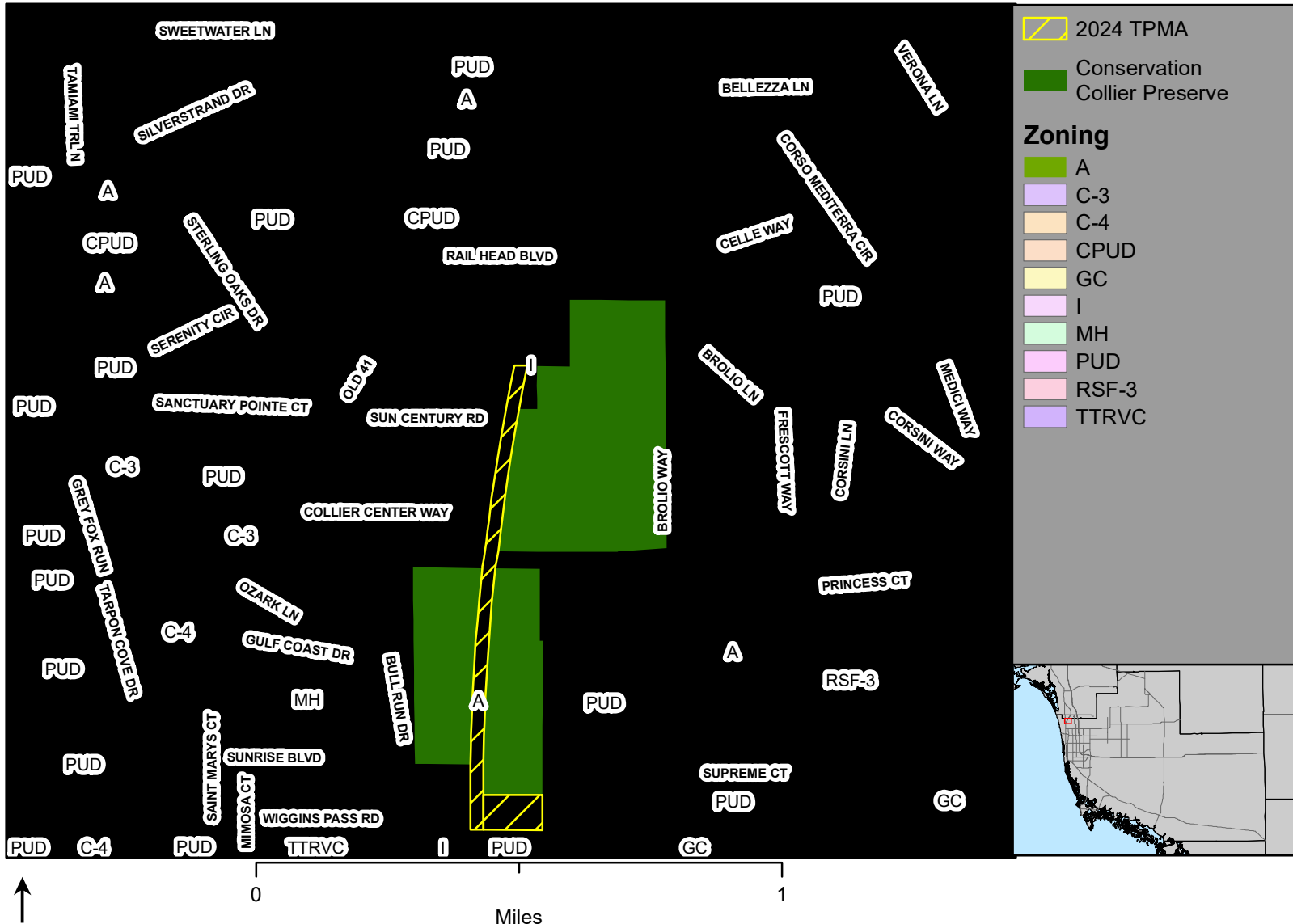


-  2024 TPMA
-  Conservation Collier Preserve
-  Conservation Area

CLIP4 Priority Natural Communities

-  Priority 1 (highest)
-  Priority 2
-  Priority 3

Railhead Scrub Preserve TPMA Zoning



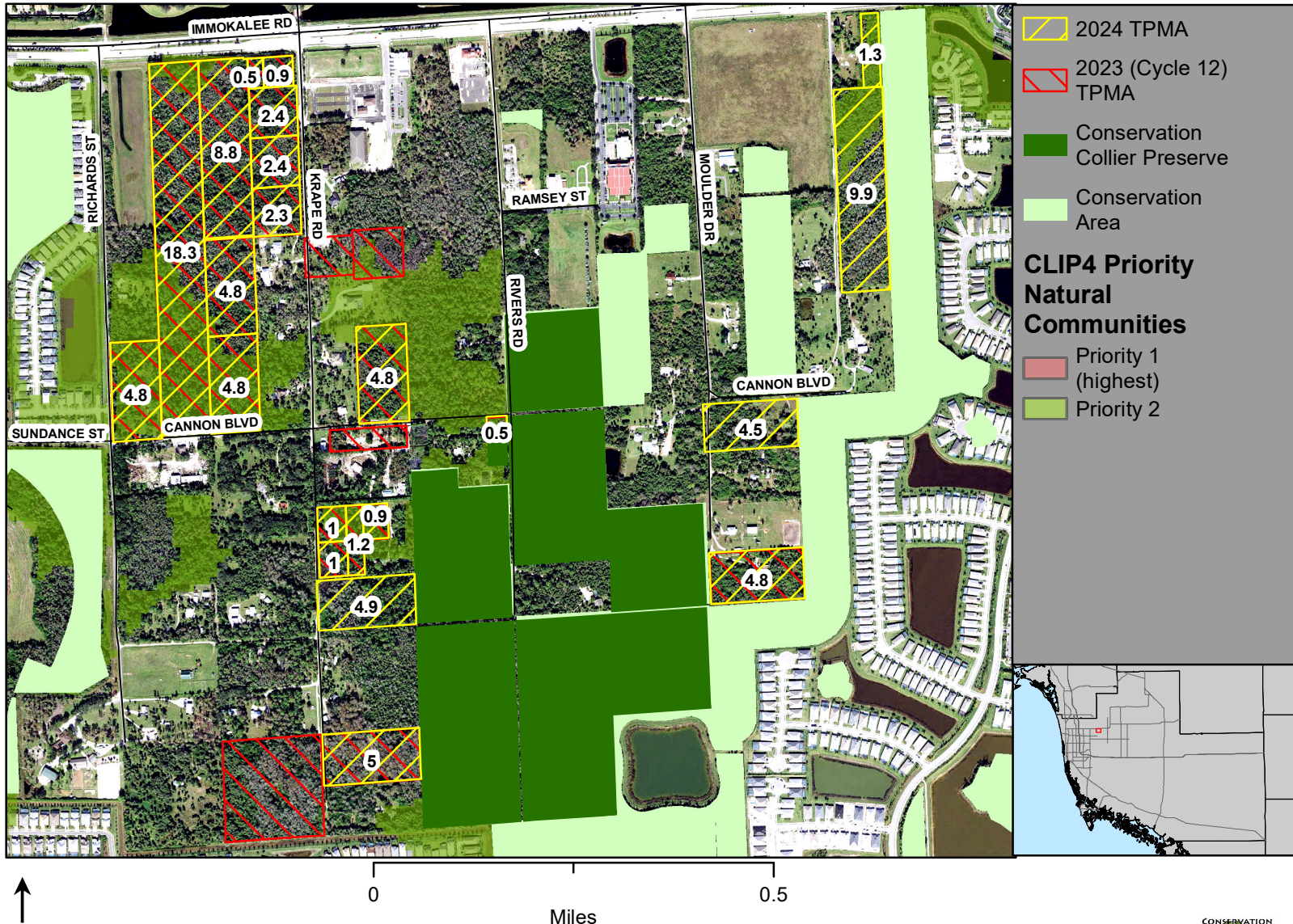
2024 TPMA
 2024 TPMA

Conservation Collier Preserve
 Conservation Collier Preserve

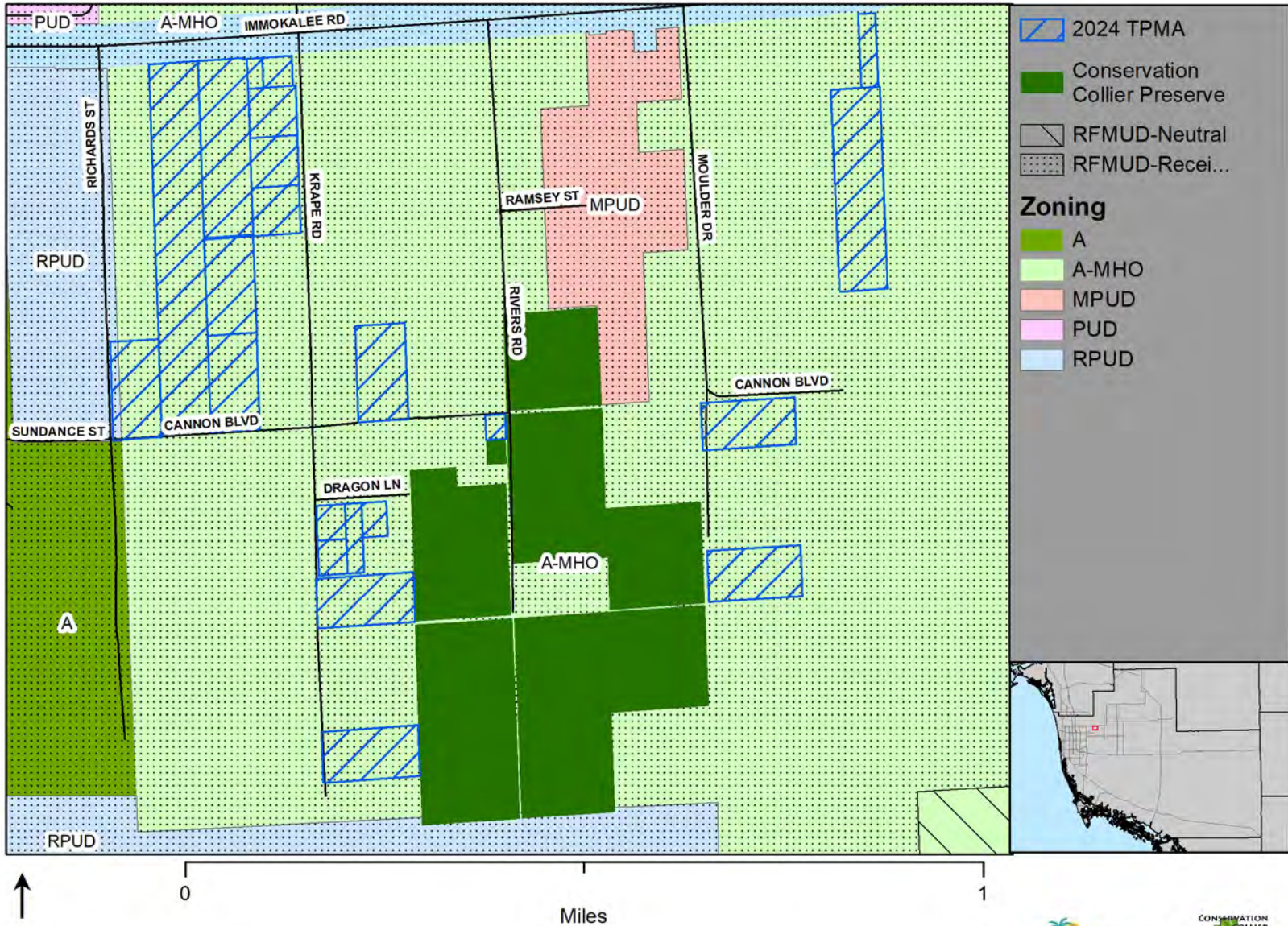
Zoning

- A
- C-3
- C-4
- CPUD
- GC
- I
- MH
- PUD
- RSF-3
- TTRVC

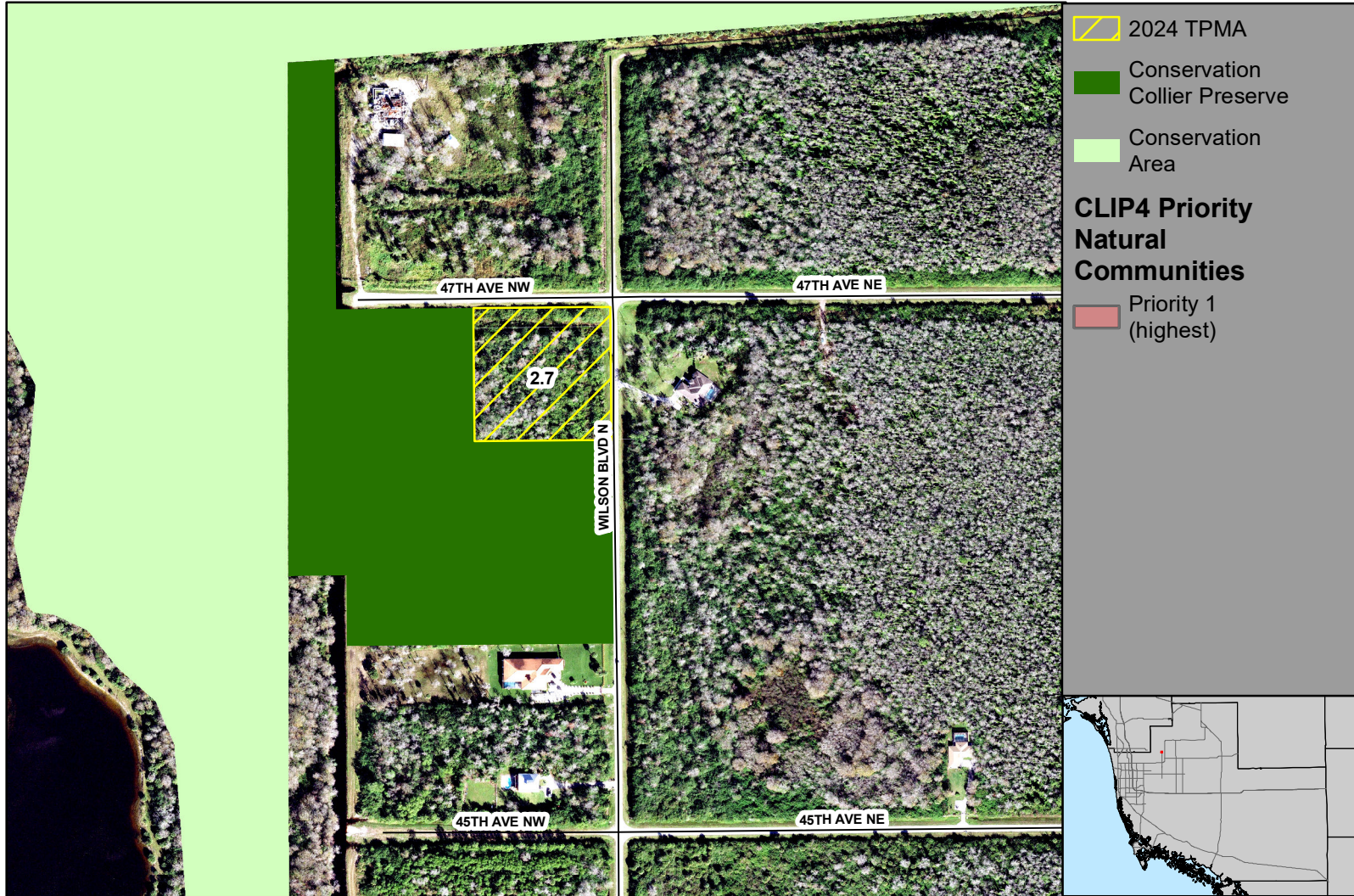
TPMA: Rivers Road Preserve
 Parcels: 22; Acreage: 89.4; Priority Habitats: Hydric Pine Flatwoods



Rivers Road Preserve TPMA Zoning



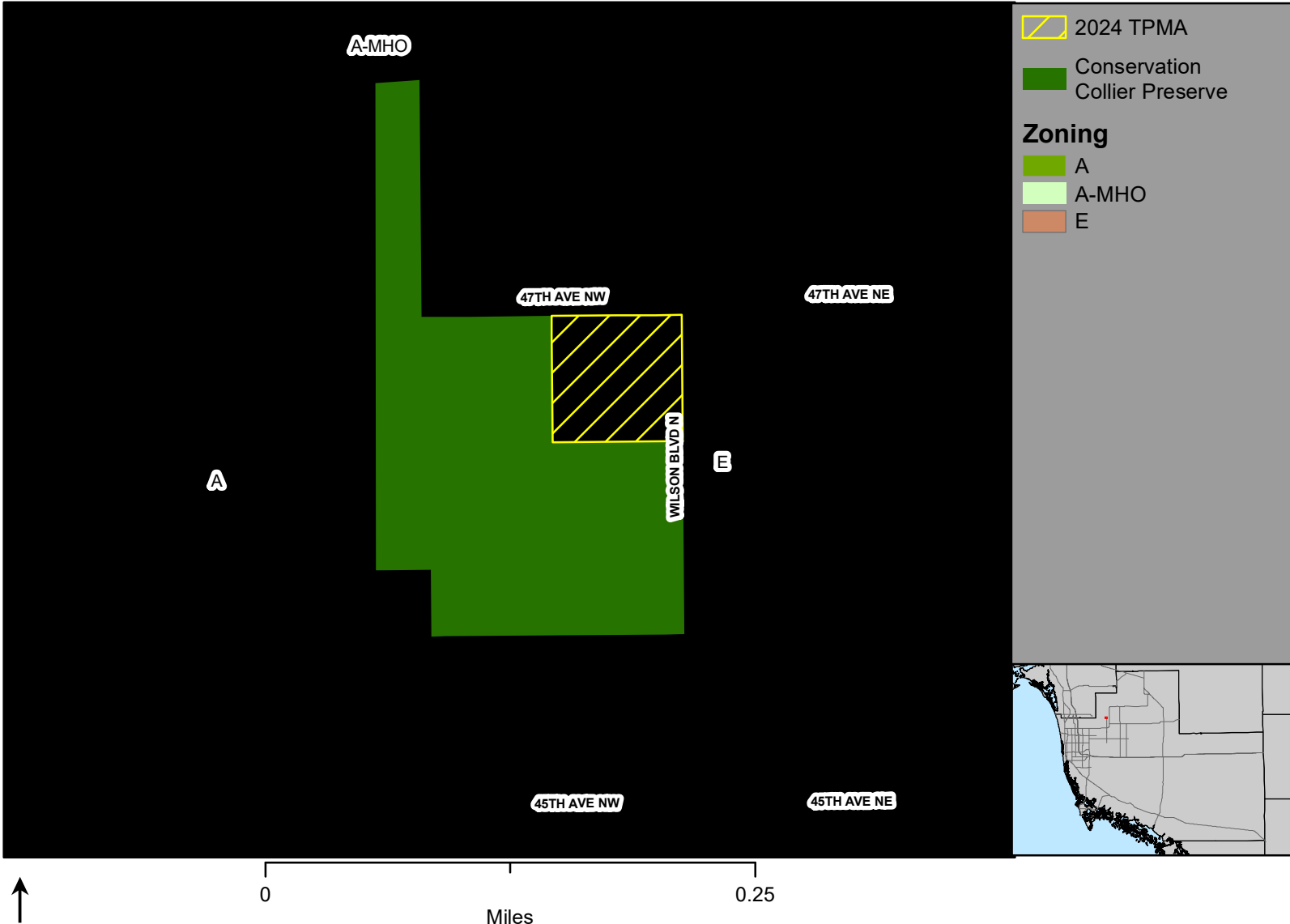
TPMA: Brewers Landing Preserve
Parcels: 1; Acreage: 2.7; Priority Habitats: None



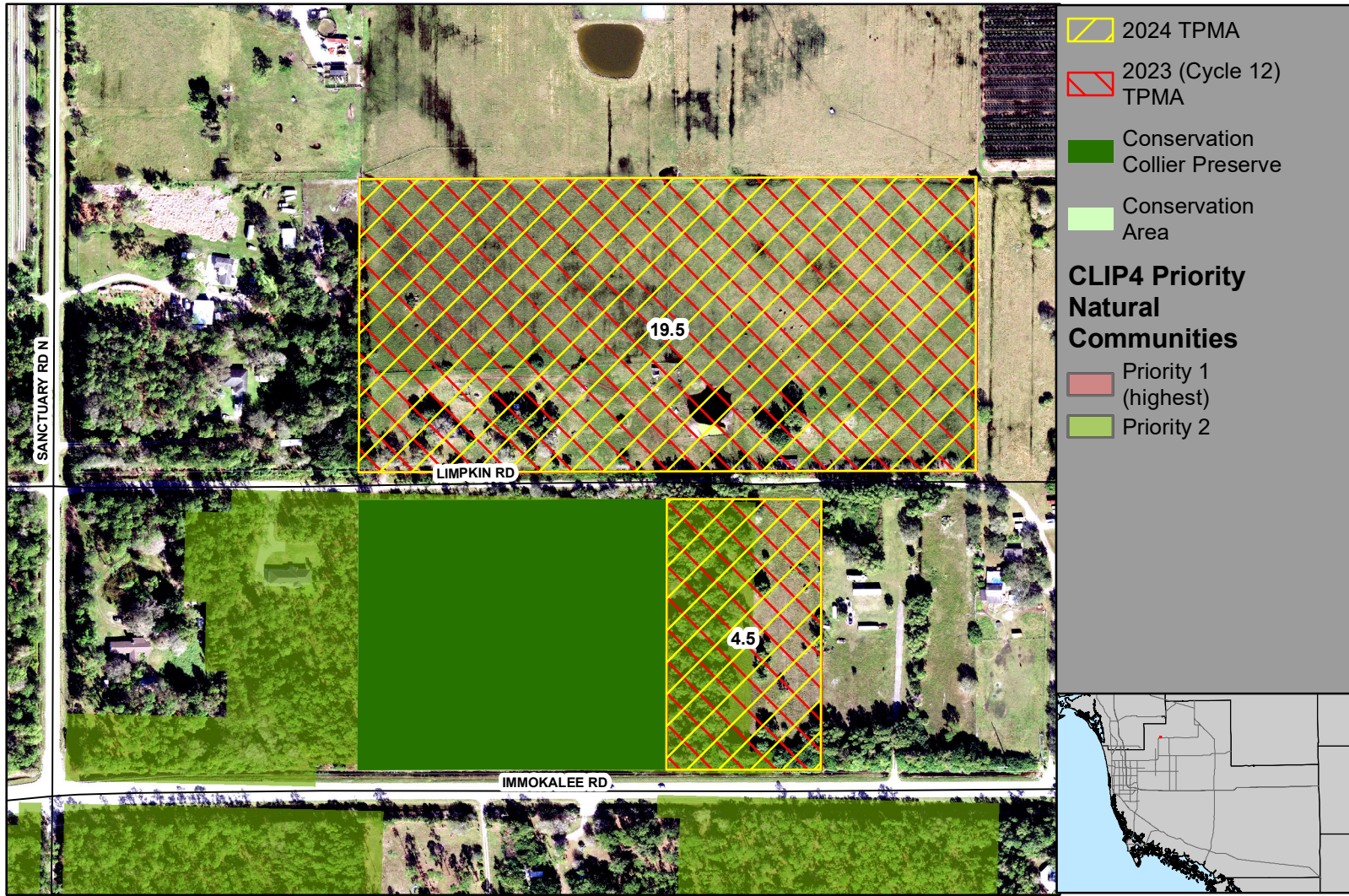
0 0.25 Miles



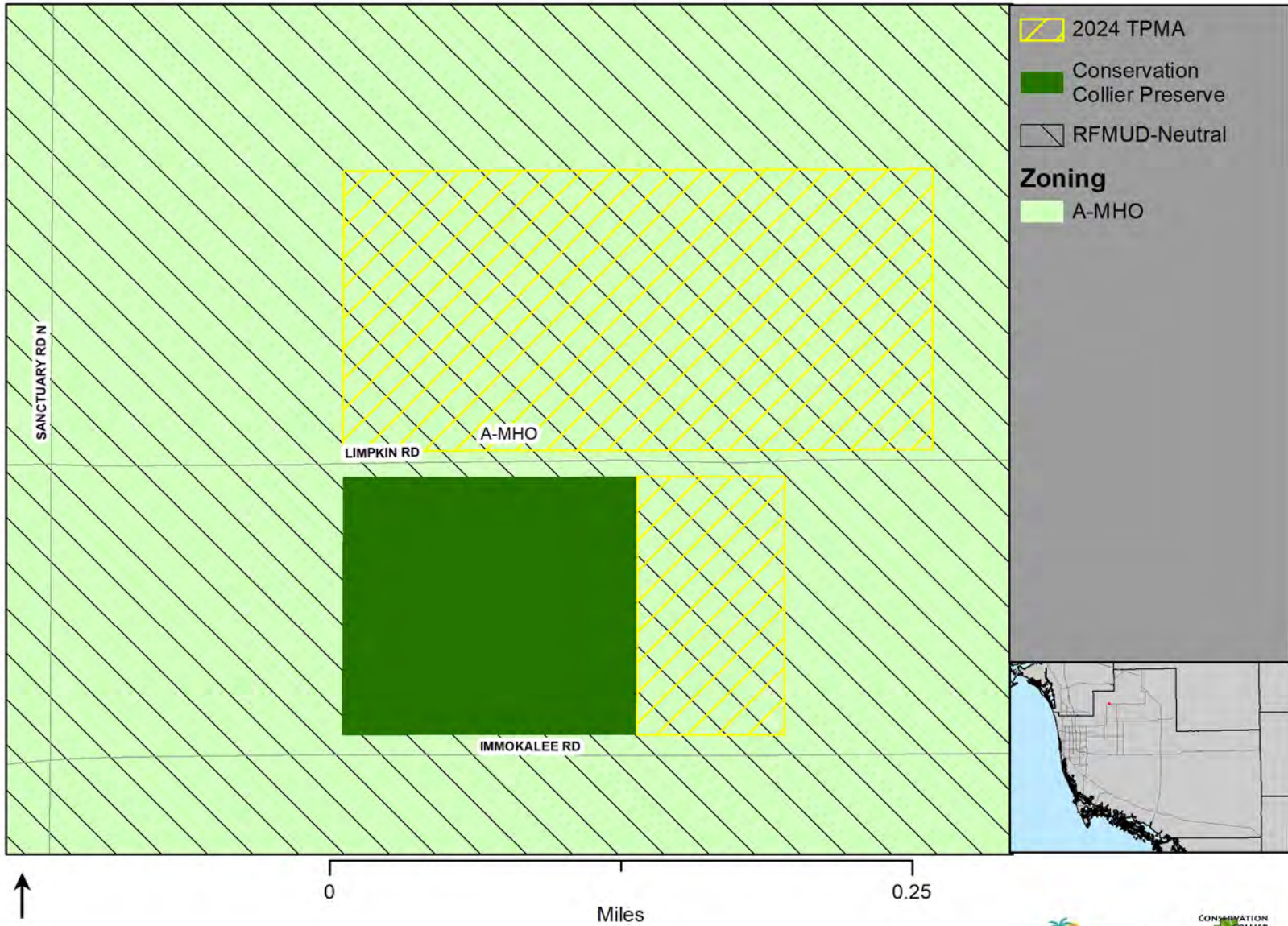
Brewers Landing Preserve TPMA Zoning



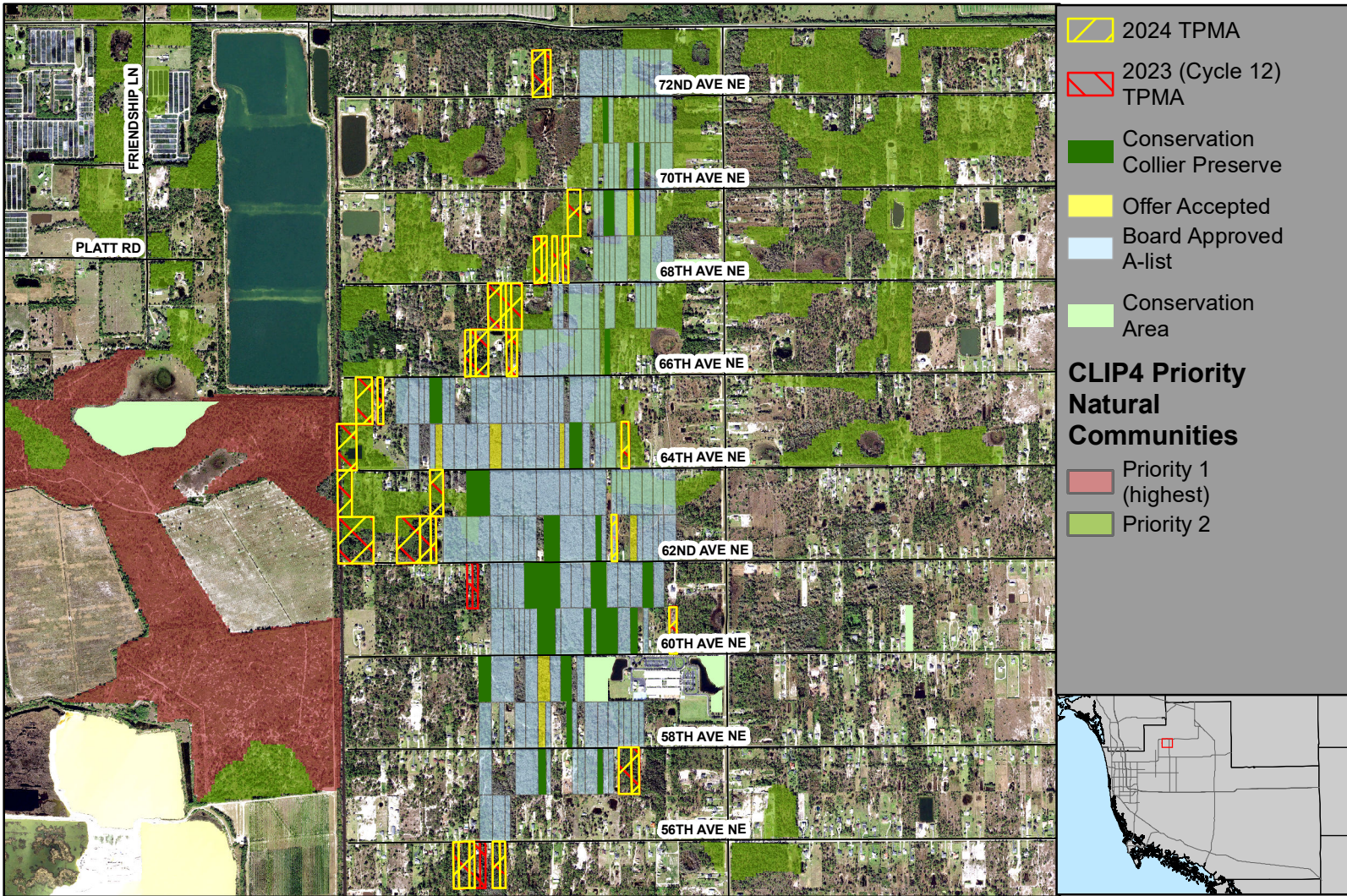
TPMA: Redroot Preserve
Parcels: 2; Acreage: 24.0; Priority Habitats: Mesic Flatwoods



Redroot Preserve TPMA Zoning

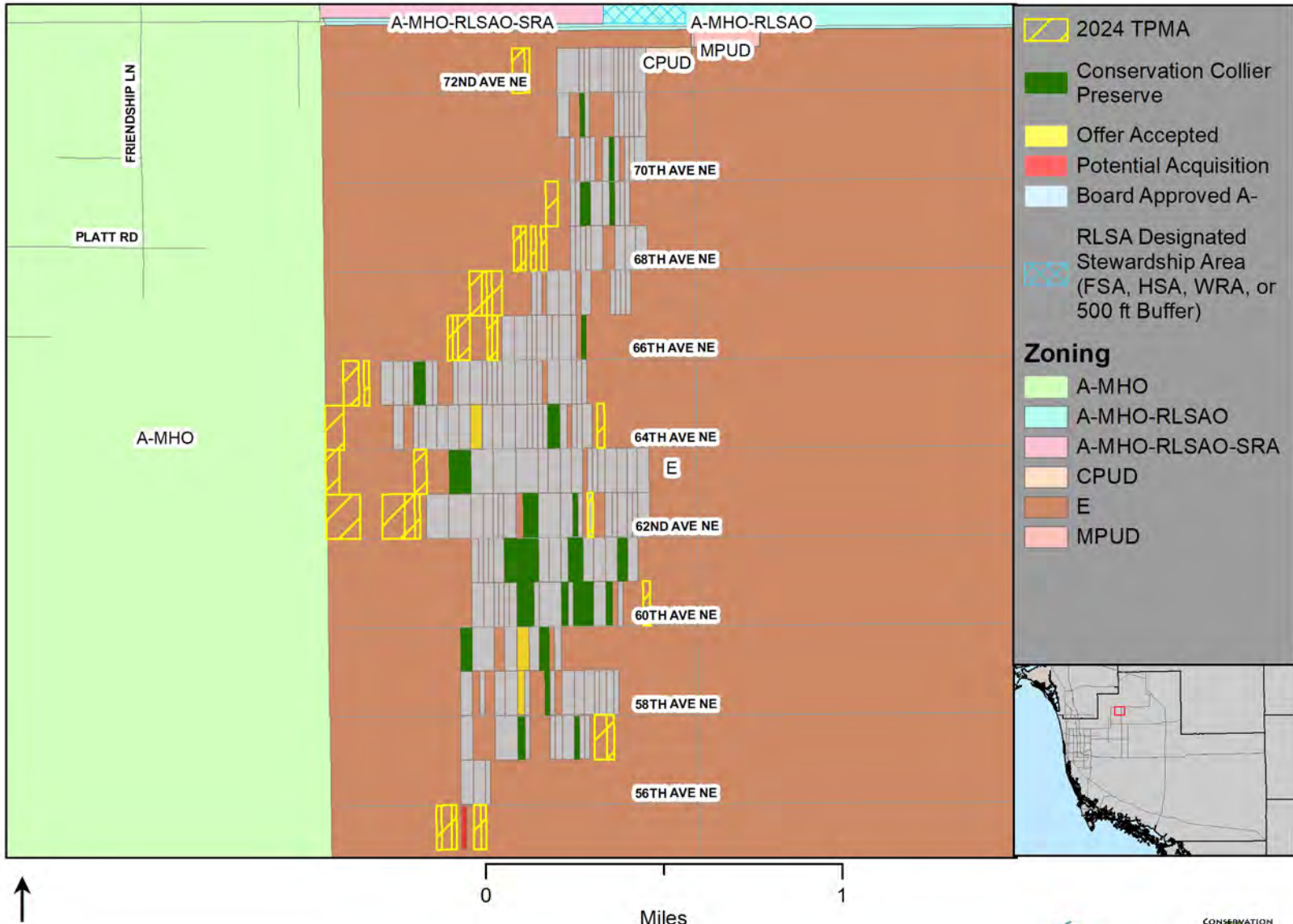


TPMA: Panther Walk Preserve
 Parcels: 35; Acreage: 72.9; Priority Habitats: Mesic Flatwoods, Hydric Pine Flatwoods



↑
 0 1 2
 Miles

Panther Walk Preserve TPMA Zoning



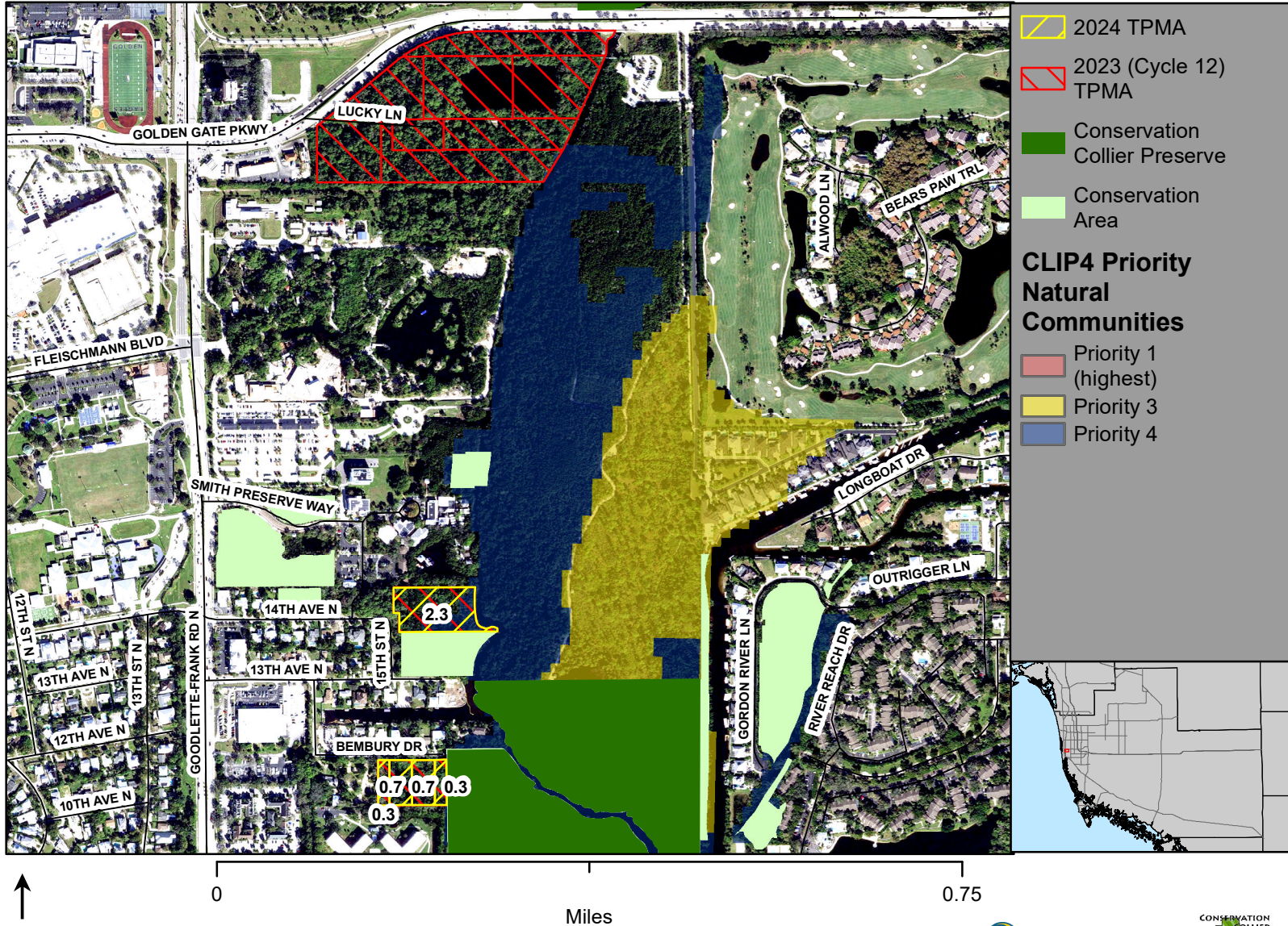
- 2024 TPMA
- Conservation Collier Preserve
- Offer Accepted
- Potential Acquisition
- Board Approved A-RLSA Designated Stewardship Area (FSA, HSA, WRA, or 500 ft Buffer)

- Zoning**
- A-MHO
 - A-MHO-RLSAO
 - A-MHO-RLSAO-SRA
 - CPUD
 - E
 - MPUD

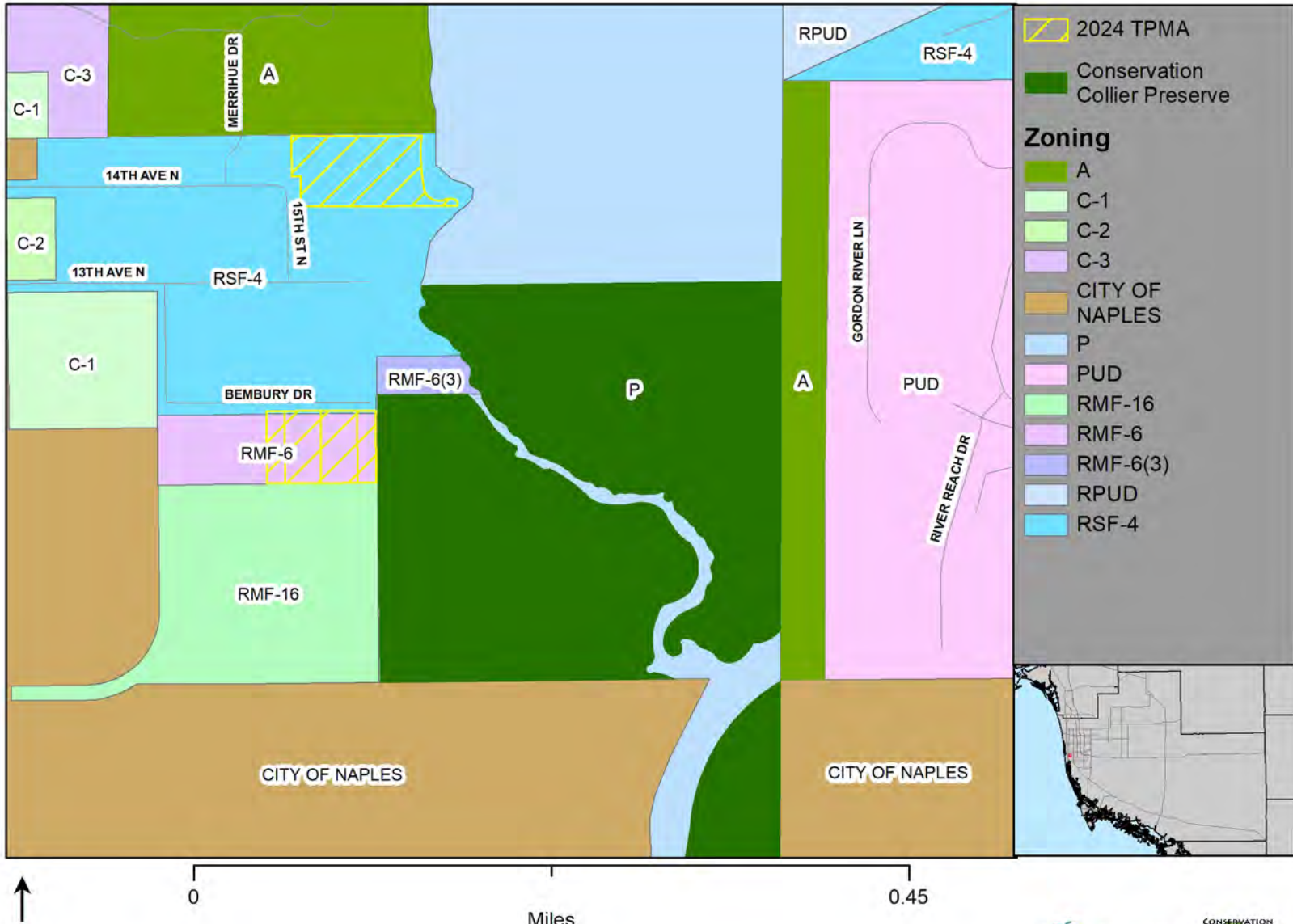


0 1
Miles

TPMA: Gordon River Greenway
 Parcels: 5; Acreage: 4.3; Priority Habitats: Mangrove Swamp



Gordon River Greenway TPMA Zoning



2024 TPMA

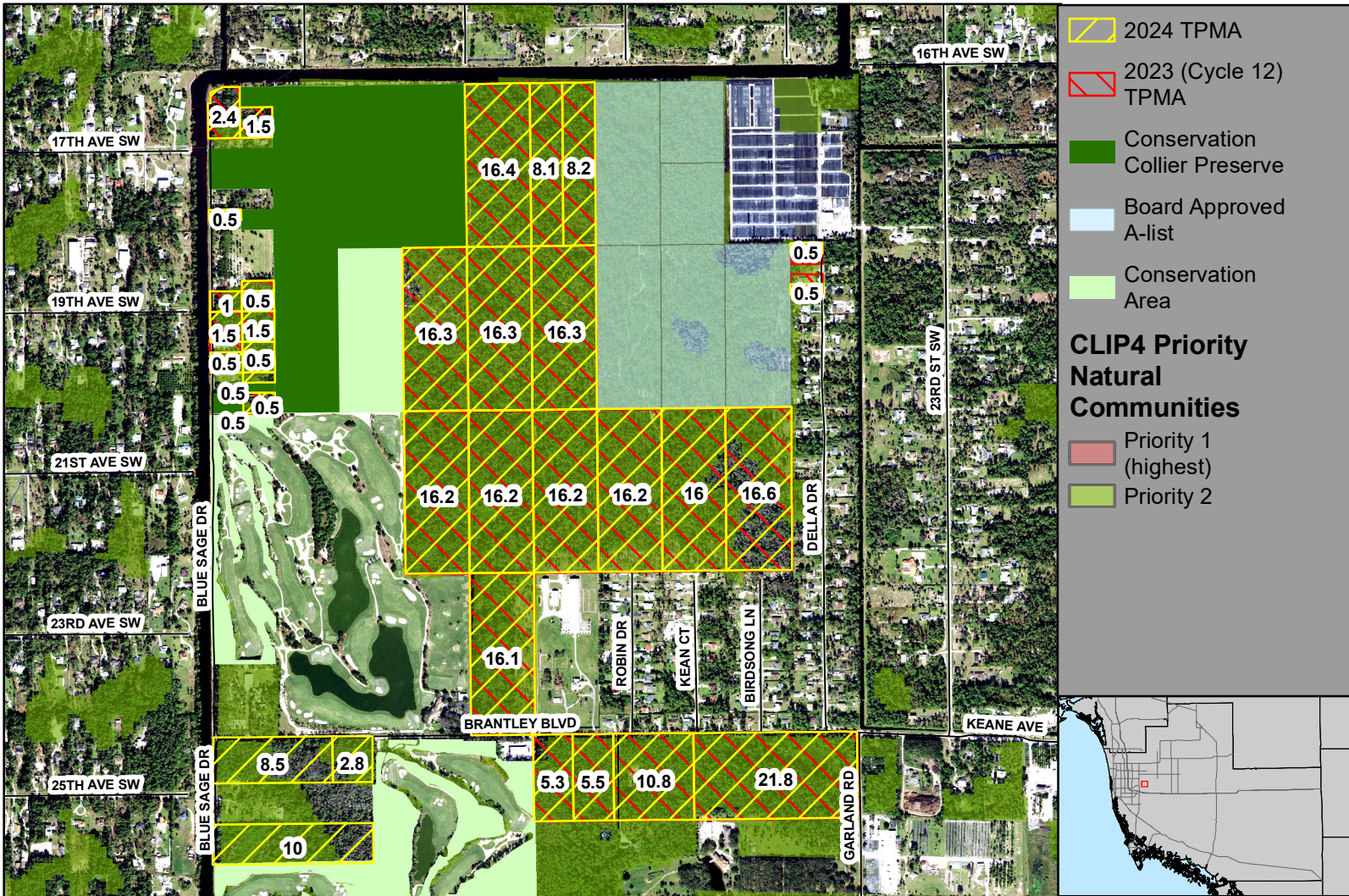
Conservation Collier Preserve

Zoning

- A
- C-1
- C-2
- C-3
- CITY OF NAPLES
- P
- PUD
- RMF-16
- RMF-6
- RMF-6(3)
- RPUD
- RSF-4

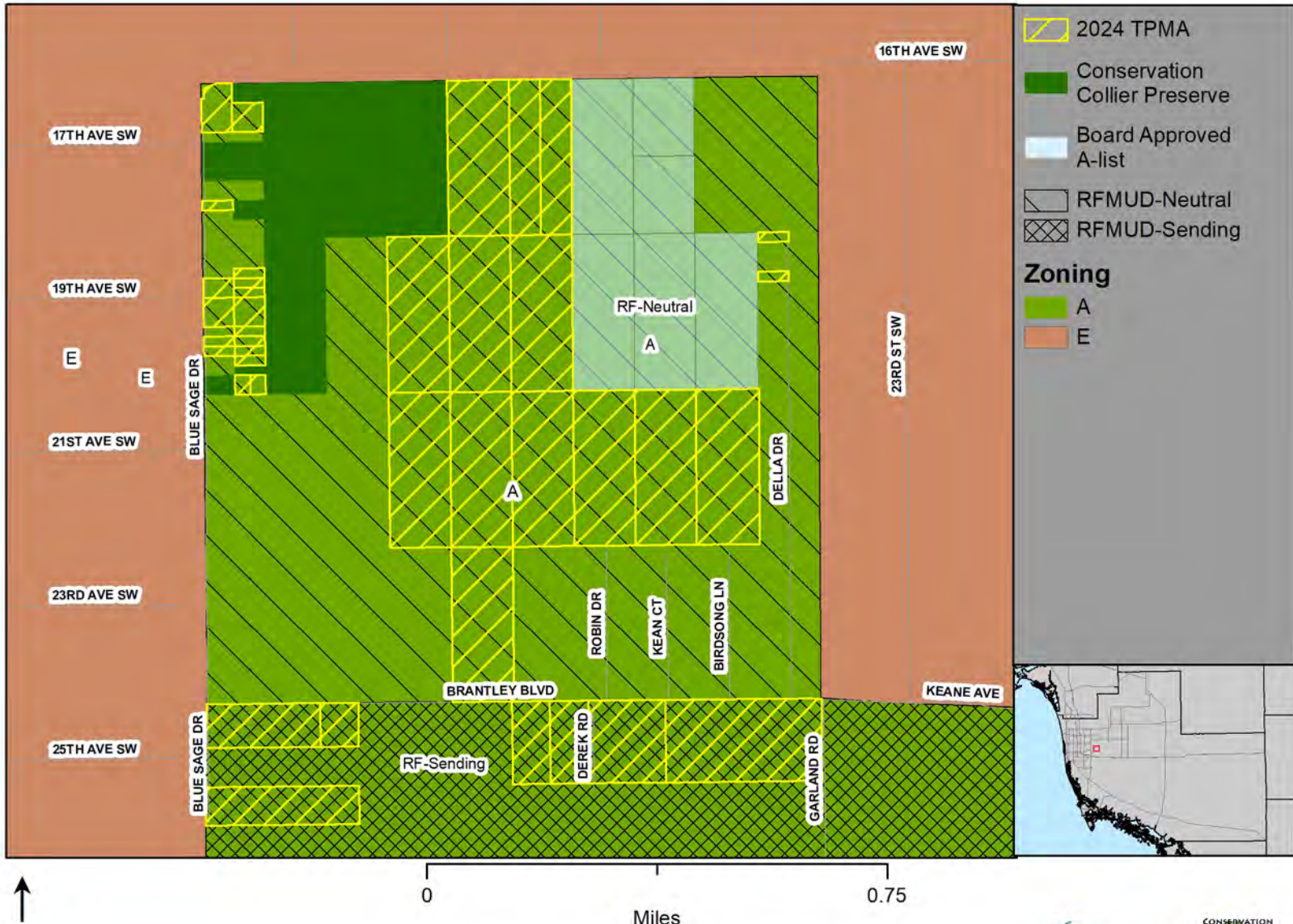






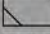

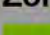
TPMA: Nancy Payton Preserve
 Parcels: 39; Acreage: 274.9; Priority Habitats: Mesic Flatwoods, Hydric Pine Flatwoods



0 1
Miles

Nancy Payton Preserve TPMA Zoning



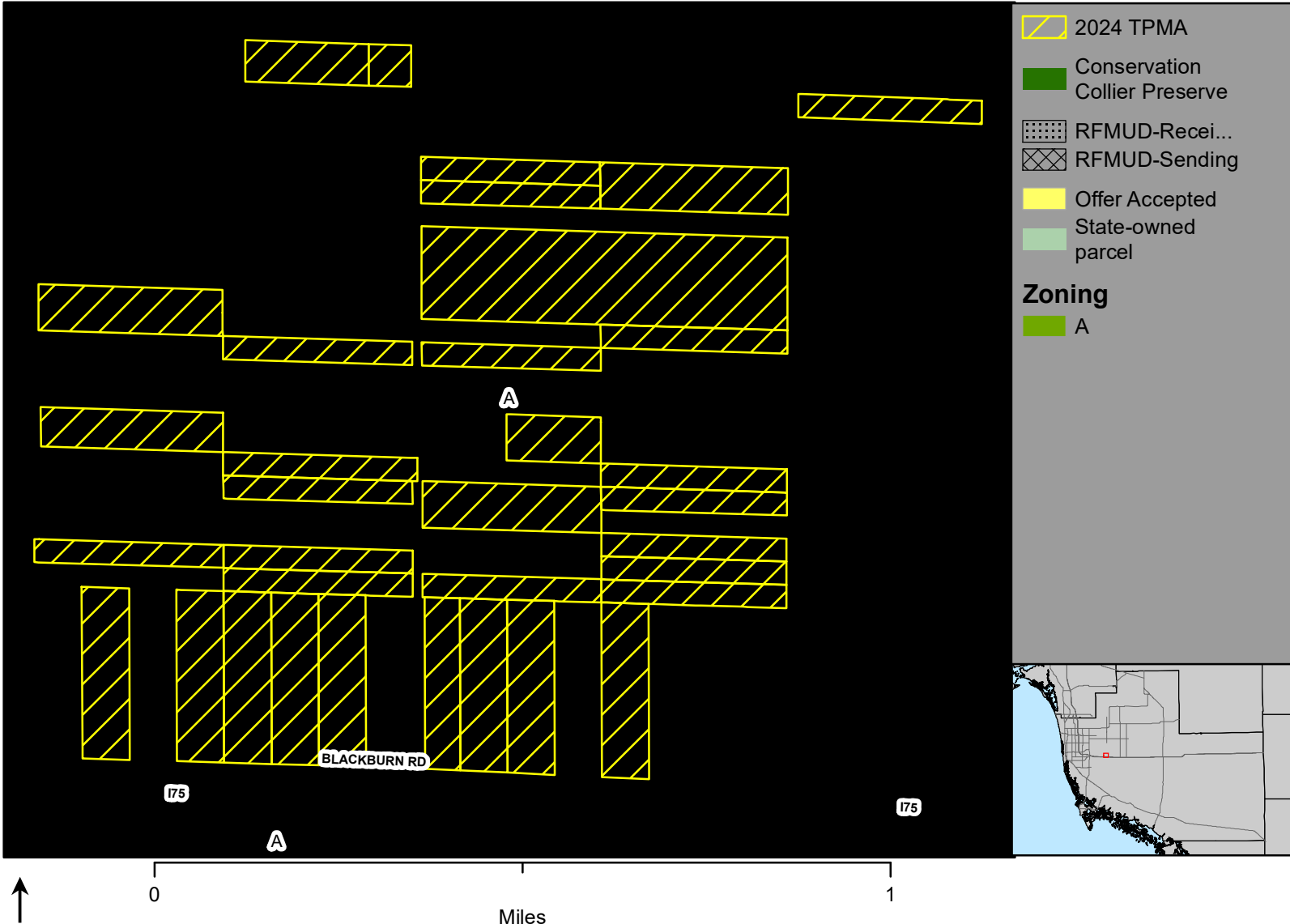
-  2024 TPMA
 -  Conservation Collier Preserve
 -  Board Approved A-list
 -  RFMUD-Neutral
 -  RFMUD-Sending
- Zoning**
-  A
 -  E



TPMA: North Belle Meade Preserve
 Parcels: 34; Acreage: 262.1; Priority Habitats: Mesic Flatwoods, Hydric Pine Flatwoods

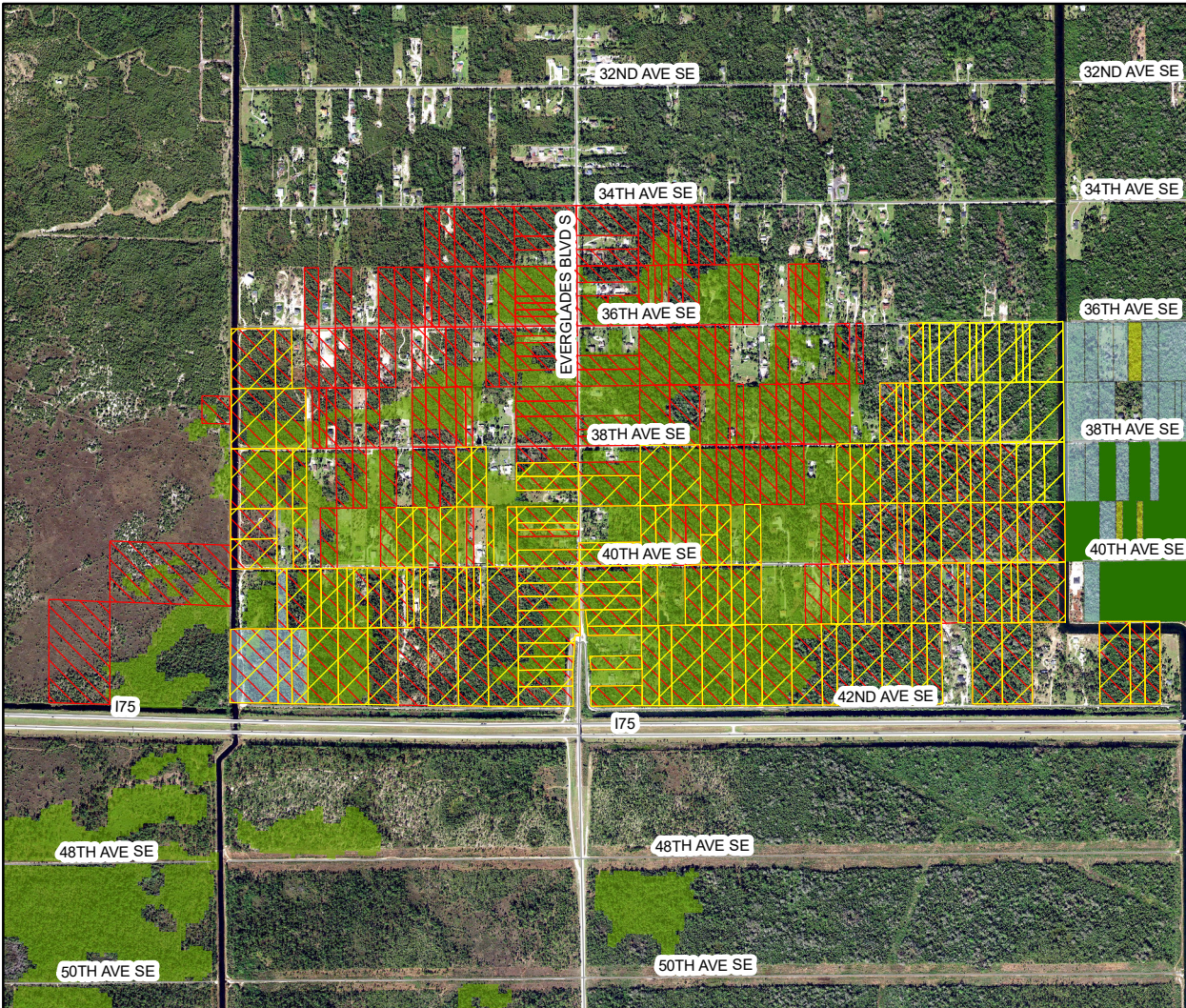







North Belle Meade Preserve TPMA Zoning



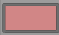

TPMA: I-75 and Everglades Blvd.

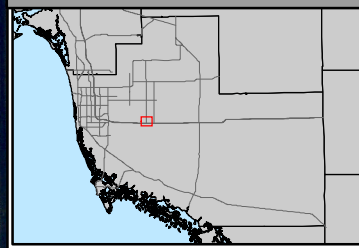
Parcels: 182; Acreage: 551.3; Priority Habitats: Hydric Pine Flatwoods, Mesic Flatwoods



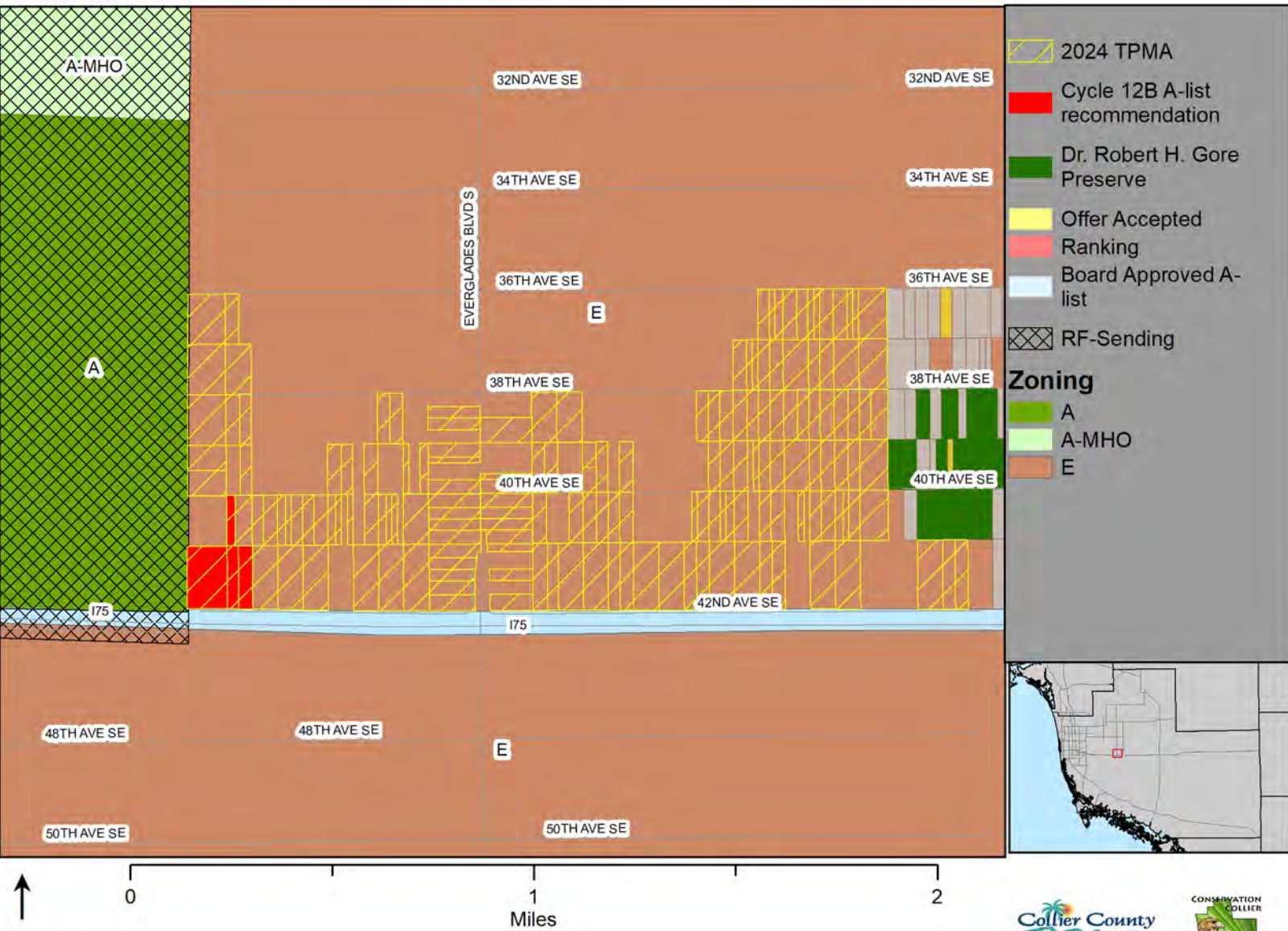
-  2024 TPMA
-  2023 (Cycle 12) TPMA
-  Dr. Robert H. Gore Preserve
-  Offer Accepted
-  Board Approved A-list

CLIP4 Priority Natural Communities

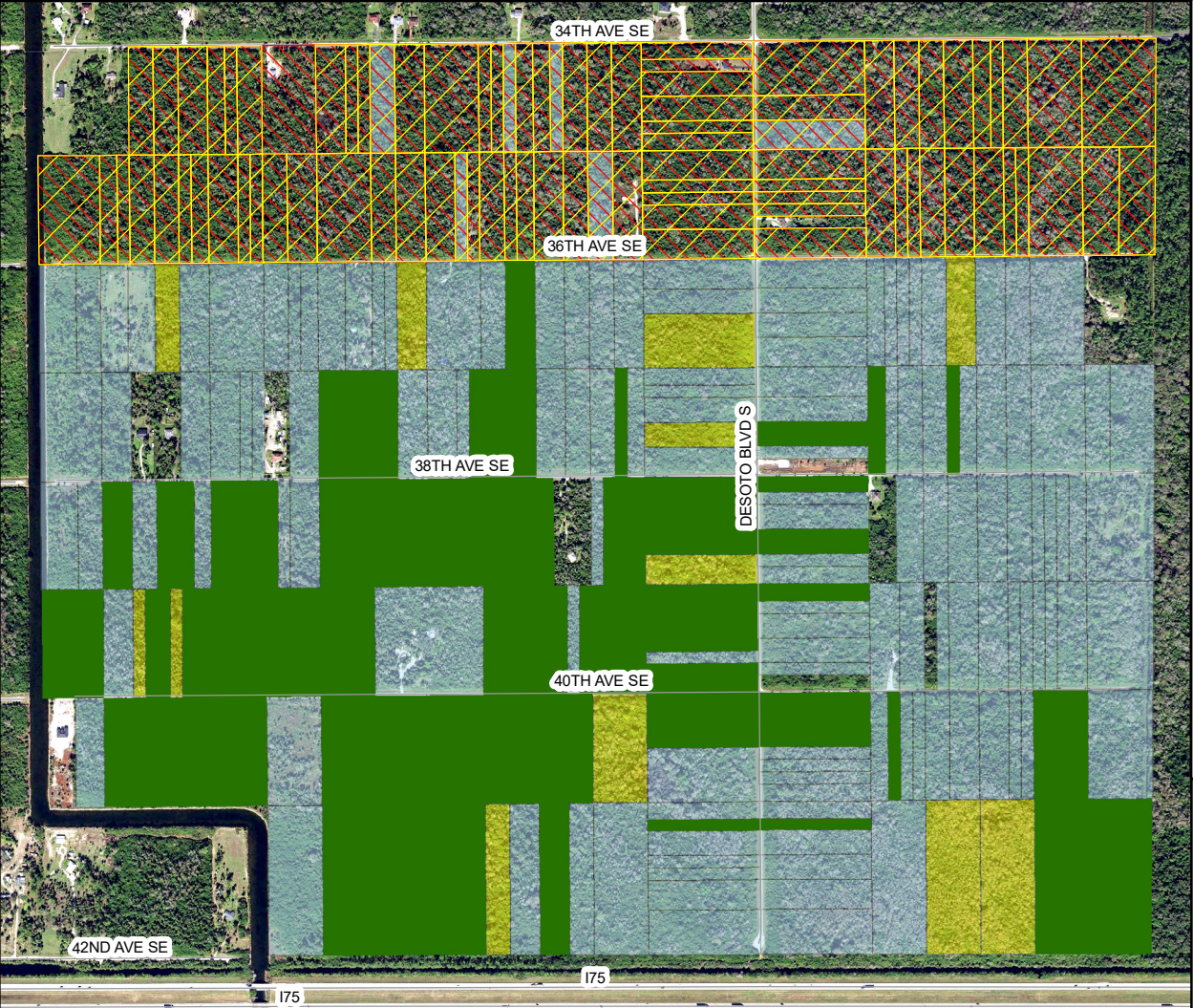
-  Priority 1 (highest)
-  Priority 2



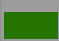




I-75 and Everglades Blvd. TPMA Zoning

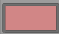


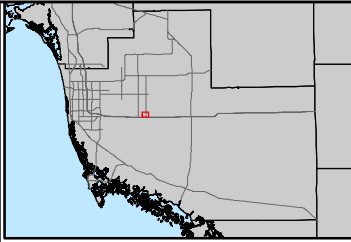
TPMA: Dr. Robert H. Gore III Preserve
 Parcels: 84; Acreage: 190.4; Priority Habitats: None



-  2024 TPMA
-  2023 (Cycle 12) TPMA
-  Dr. Robert H. Gore Preserve
-  Offer Accepted
-  Board Approved A-list

CLIP4 Priority Natural Communities

-  Priority 1 (highest)



Dr. Robert H. Gore Preserve TPMA Zoning



- 2024 TPMA
- Cycle 12B A-list recommendation
- Dr. Robert H. Gore Preserve
- Offer Accepted
- Ranking
- Board Approved A-list

Zoning

- A-MHO-RLSAO
- E
- PUD-RLSAO



0 1
Miles



TPMA: Bayshore Area

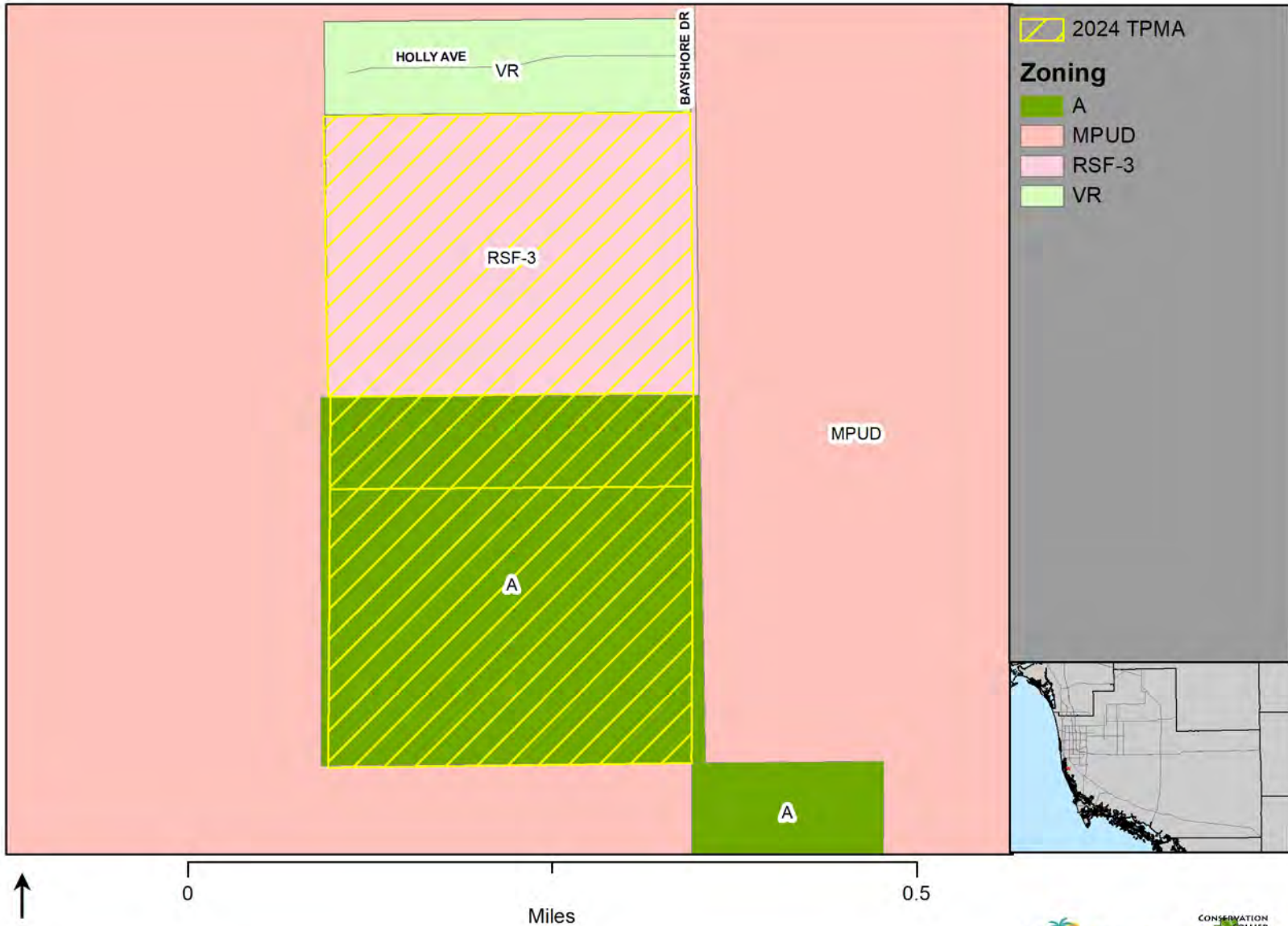
Parcels: 3; Acreage: 71.6; Priority Habitats: Hydric Pine Flatwoods; Salt Marsh




- 2024 TPMA
- 2023 (Cycle 12) TPMA
- Conservation Area
- CLIP4 Priority Natural Communities**
 - Priority 1 (highest)
 - Priority 2
 - Priority 3






Bayshore TPMA Zoning

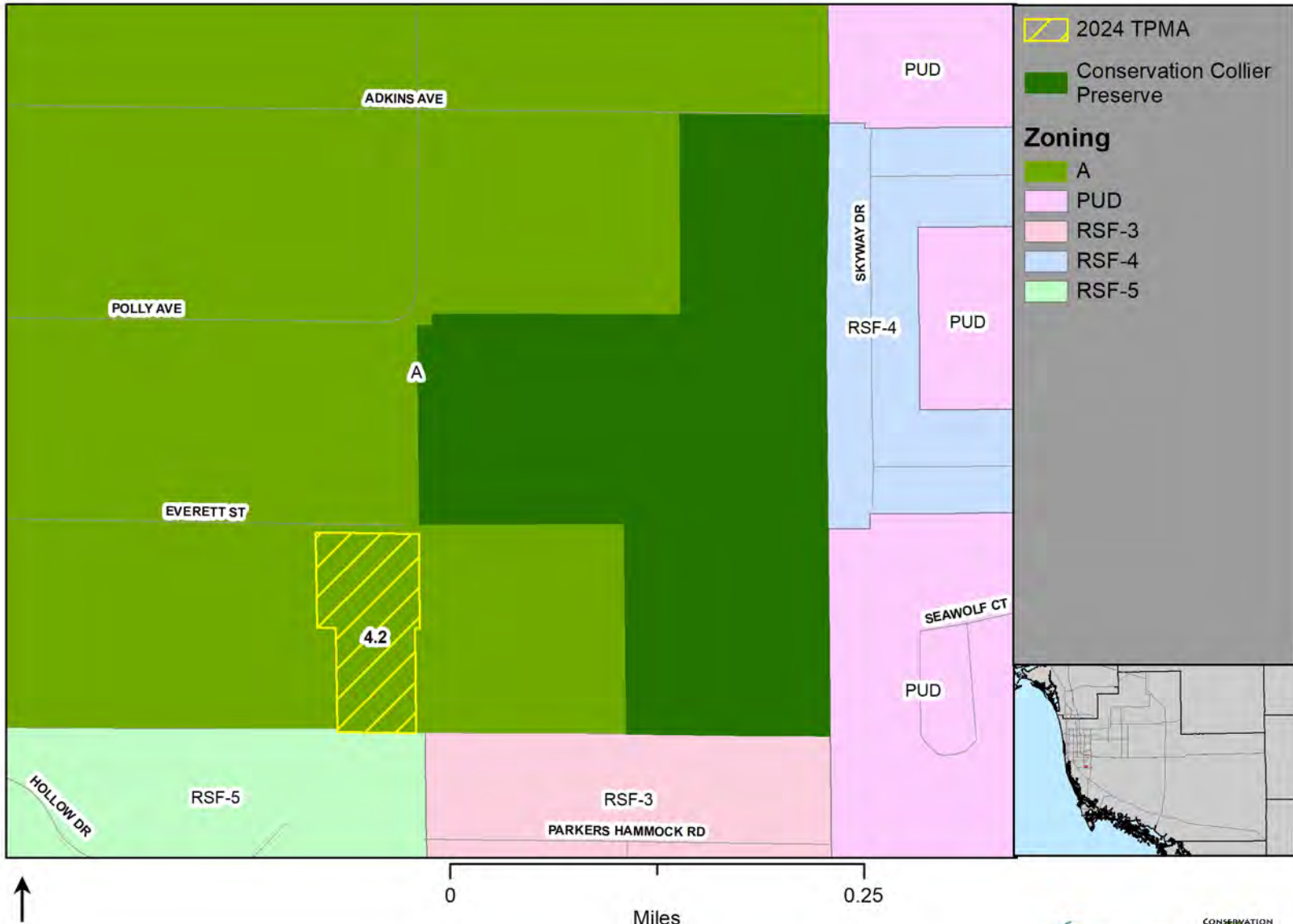


 2024 TPMA

Zoning




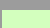

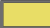
-  A
-  MPUD
-  RSF-3
-  VR

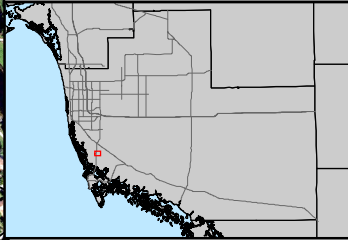
Rattlesnake Hammock Preserve TPMA Zoning



TPMA: Shell Island Preserve
 Parcels: 5; Acreage: 144.9; Priority Habitats: Salt Marsh

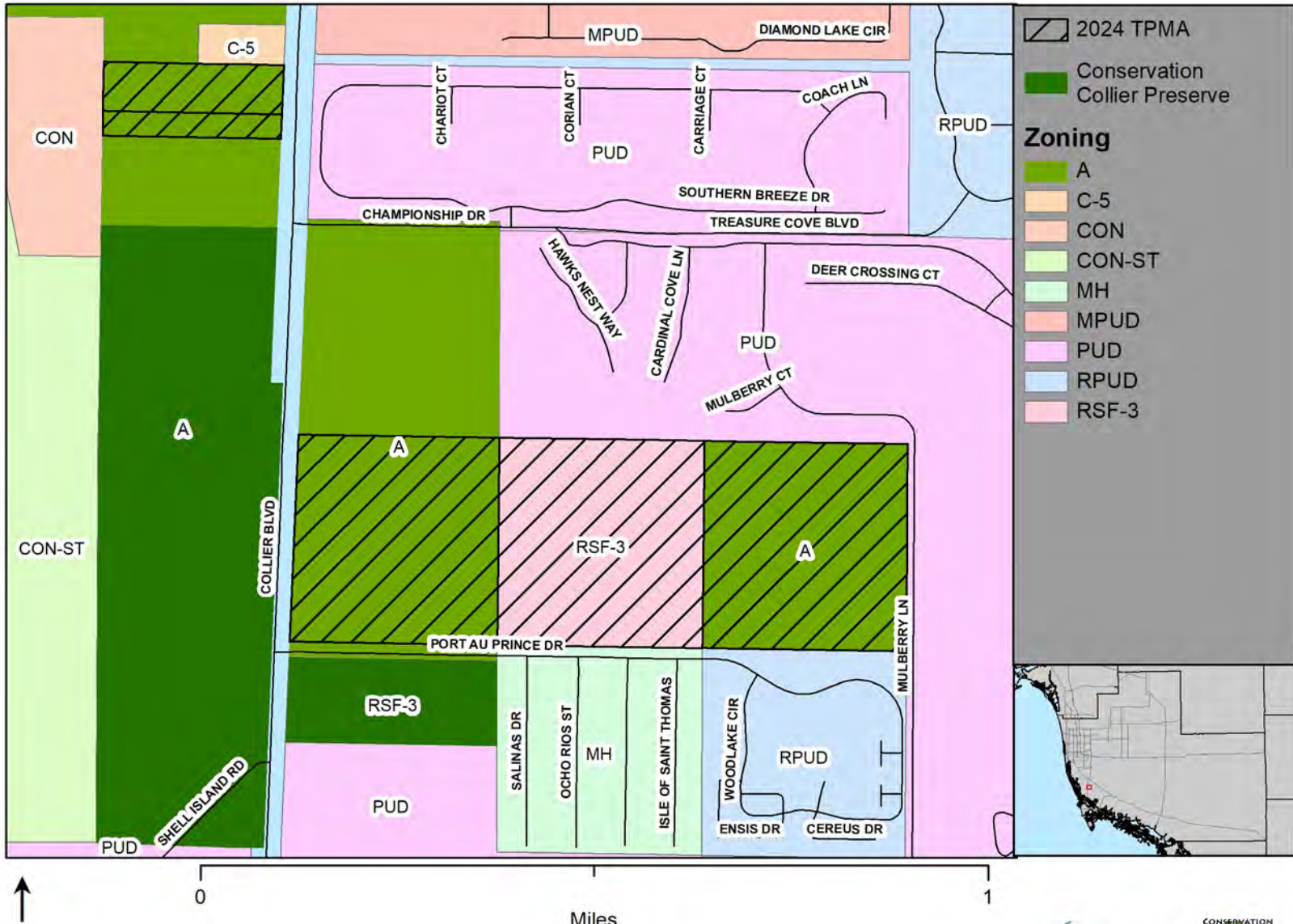


-  2024 TPMA
-  2023 (Cycle 12) TPMA
-  Conservation Collier Preserve
-  Conservation Area
- CLIP4 Priority Natural Communities**
-  Priority 1 (highest)
-  Priority 3



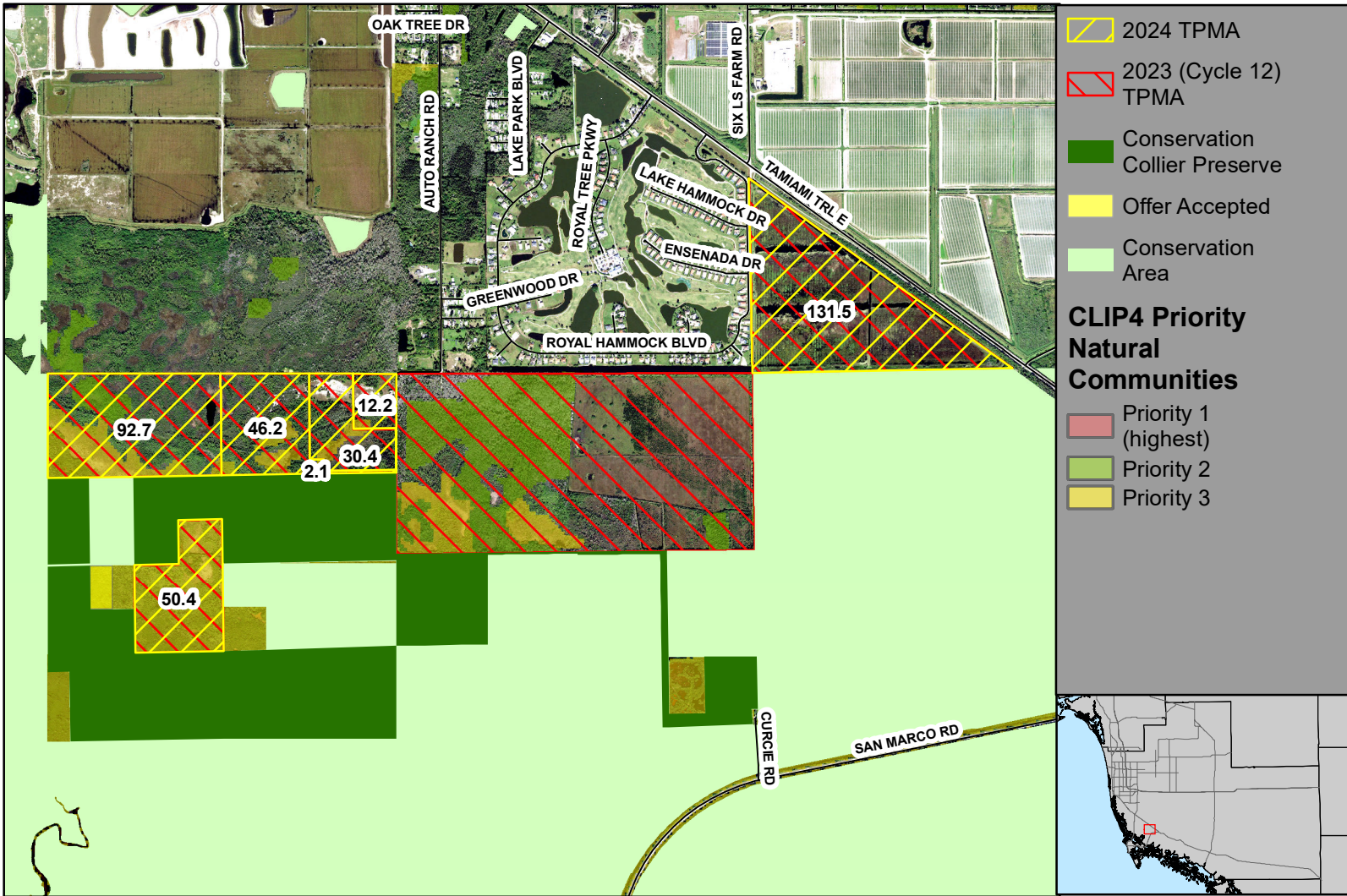
0 0.5
Miles

Shell Island Preserve TPMA Zoning

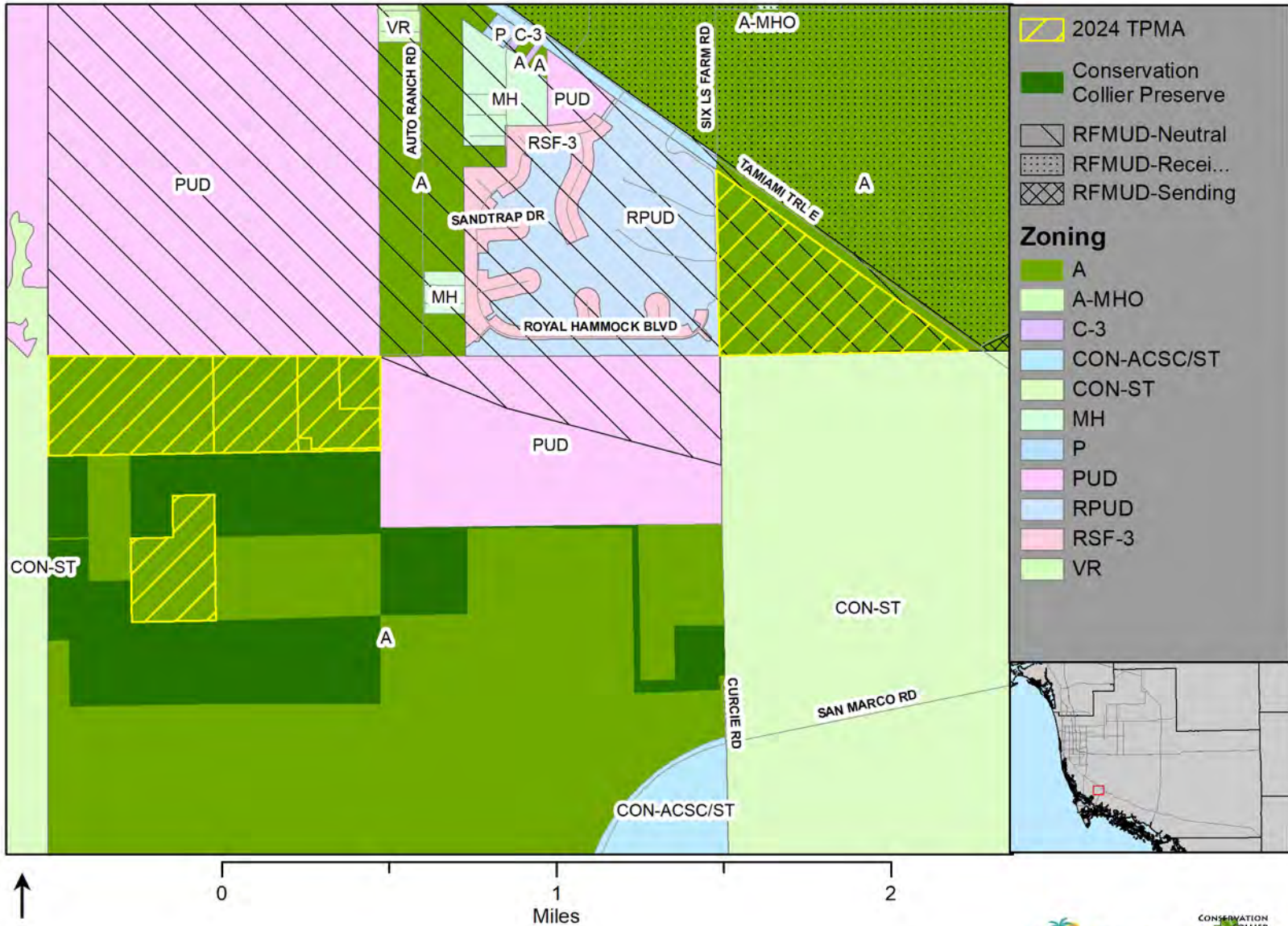


TPMA: Mcllvane Marsh Preserve

Parcels: 7; Acreage: 365.5; Priority Habitats: Salt Marsh, Hydric Pine Flatwoods, Mangrove Swamp



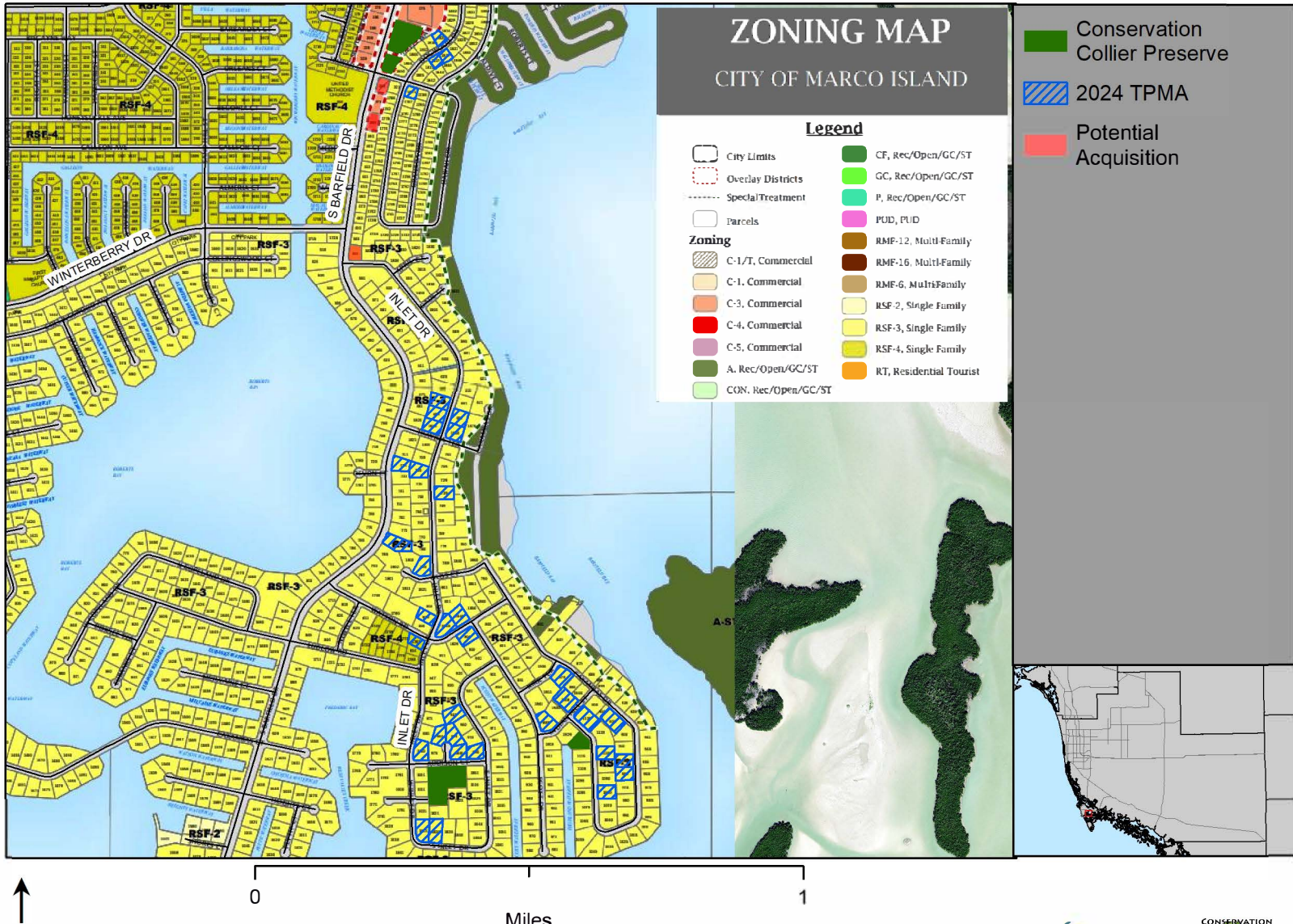
Mcllvane Marsh Preserve TPMA Zoning



TPMA: Marco Island
Parcels: 36; Acreage: 18.8; Priority Habitats: Scrub, Maritime Hammock



Marco Island TPMA Zoning



2024 Target Protection Mailing Area Parcel Selection Strategy

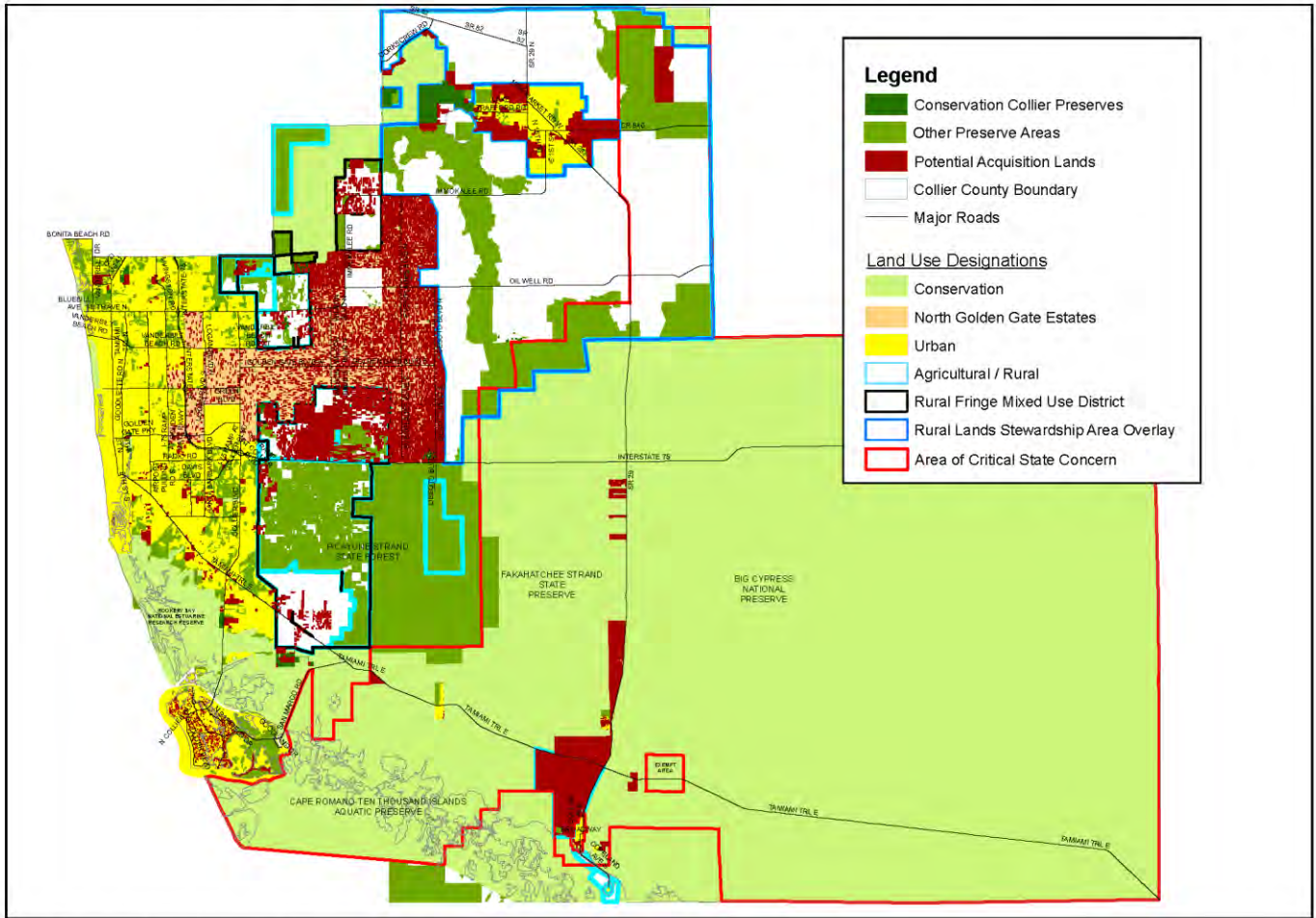
The goal of the Conservation Collier Program is to protect and conserve the remaining greenspaces within Collier County. Several factors limit how much land can be acquired; therefore, the program must selectively target the most valuable of these remaining lands. The Conservation Collier Implementation Ordinance identifies eight initial criteria to evaluate parcels for acquisition. The most limiting criterion among remaining available parcels is the presence of lands identified as Priority 1, 2, 3, or 4 by the Critical Lands and Water Identification Project (CLIP). The CLIP is a collection of spatial data that identify priorities for a broad range of natural resources in Florida. The CLIP Priority Natural Communities layer was developed by the Florida Natural Areas Inventory using the Florida Cooperative Land Cover System for the Florida Forever Conservation and Recreation Land Acquisition Program. Florida Forever uses this layer, among others, to create a statewide blueprint for conserving natural resources. Natural communities within this layer are prioritized using a combination of their global conservation status rank and their landscape context. The priority natural communities identified within Collier County by this layer are listed in Table 1. In addition to these communities, the layer prioritizes pine flatwoods in our region. Undeveloped parcels within the potential acquisition lands were considered for acquisition based primarily on whether they contained priority natural communities, but also if they enhanced current conservation lands, were at risk of development, were “large”, or were currently listed for sale (Figures 1 & 2). The results are summarized in Table 2.

Table 1. Collier County CLIP Priority Natural Communities and Their Priorities

Habitat	CLIP Priority Natural Community	Priority
Scrub	Scrub	1
Scrubby Flatwoods	Scrub	1
Beach Dune	Coastal Uplands	1
Coastal Berm	Coastal Uplands	1
Coastal Strand	Coastal Uplands	1
Maritime Hammock	Coastal Uplands	1
Shell Mound	Coastal Uplands	1
Mesic Hammock	Upland Hardwood Forest	1-2
Pine Flatwoods	Pine Flatwoods	2-4
Mesic Flatwoods	Pine Flatwoods	2-4
Hydric Pine Flatwoods	Pine Flatwoods	2-4
Salt Marsh	Coastal Wetlands	2-4
Mangrove Swamp	Coastal Wetlands	2-4

Figure 1. Conservation Collier Potential Acquisition Lands 2019

Figure C-1. DRAFT Conservation Collier Potential Acquisition Lands



Map is a draft document and should not be used for decision making purposes.
 Source: Collier County Conservation Collier. 10-7-2019. Conservation Collier/Maps/Acquisition Plan/WorkingMapAndShapefiles/10-7-19/PriorityAreas10-7-19

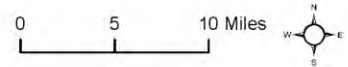


Figure 2. Distribution of CLIP Priority Natural Communities in Collier County

CLIP4 Priority Natural Communities in Collier County

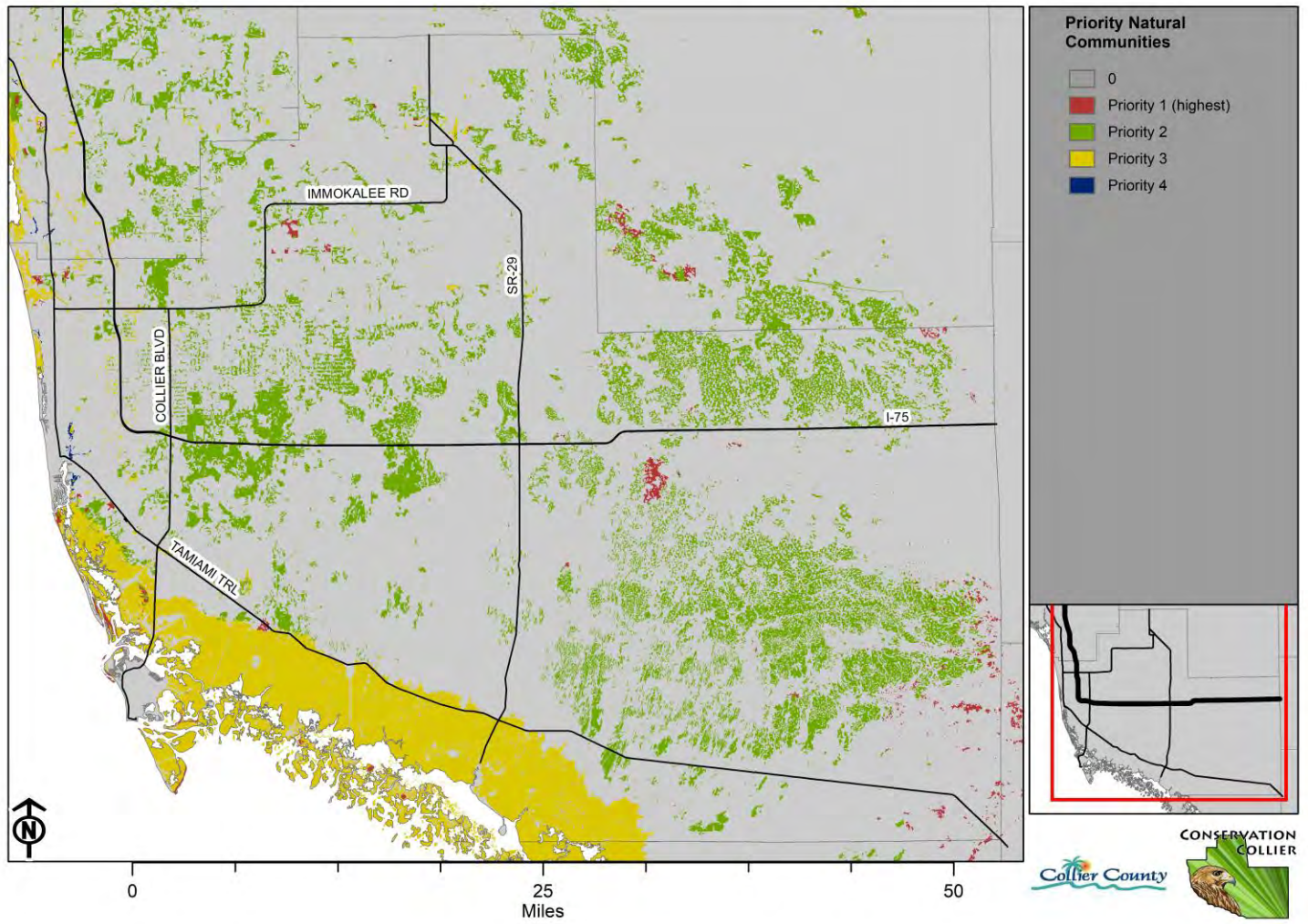


Table 2. 2024 Target Protection Mailing Areas

Target Protection Mailing Area	Parcels	Acreage	Priority Natural Communities Present
Bayshore Area	3	71.6	Hydric Pine Flatwoods, Salt Marsh
Brewers Landing	1	2.7	None
Caracara Prairie Preserve	7	240.4	Mesic Flatwoods
Dr. Robert H. Gore III Preserve	84	190.4	None
Gordon River Greenway	5	4.3	Mangrove Swamp
I-75 & Everglades Blvd.	182	551.3	Mesic Flatwoods, Hydric Pine Flatwoods
Immokalee	6	1,610.4	Mesic Flatwoods
Marco Island	36	18.8	Scrub, Maritime Hammock*
McIlvane Marsh Preserve	7	365.5	Hydric Pine Flatwoods, Salt Marsh, Mangrove Swamp
Nancy Payton Preserve	39	274.9	Mesic Flatwoods, Hydric Pine Flatwoods
North Belle Meade Preserve	34	262.1	Mesic Flatwoods, Hydric Pine Flatwoods
Panther Walk Preserve	35	72.9	Mesic Flatwoods, Hydric Pine Flatwoods
Pepper Ranch Preserve	3	74.4	Mesic Flatwoods, Hydric Pine Flatwoods
Railhead Scrub Preserve	2	18.8	Hydric Pine Flatwoods, Scrub
Rattlesnake Hammock Preserve	1	4.2	Hydric Pine Flatwoods
Redroot Preserve	2	24.0	Mesic Flatwoods
Rivers Road Preserve	22	89.4	Hydric Pine Flatwoods
Shell Island Preserve	5	144.9	Salt Marsh
Total	474	4,021.0	* Not identified by layer but presumed present