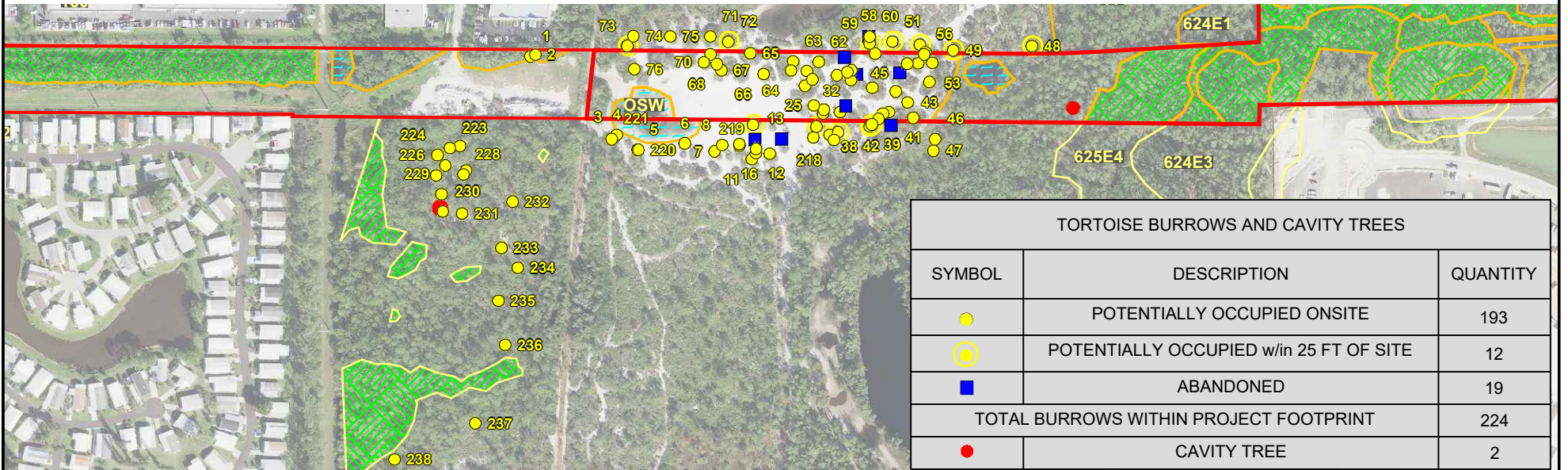


TORTOISE LOCATIONS -WEST PROPERTY AREA

SCALE: 1" = 400'



TORTOISE LOCATIONS -EAST PROPERTY AREA

SCALE: 1" = 400'

TORTOISE BURROWS AND CAVITY TREES		
SYMBOL	DESCRIPTION	QUANTITY
●	POTENTIALLY OCCUPIED ONSITE	193
○	POTENTIALLY OCCUPIED w/in 25 FT OF SITE	12
■	ABANDONED	19
TOTAL BURROWS WITHIN PROJECT FOOTPRINT		224
●	CAVITY TREE	2



Turrell, Hall & Associates, Inc.
 Marine & Environmental Consulting
 3584 Exchange Ave. Naples, FL 34104-3732
 Email: tuna@thanaples.com Phone: (239) 643-0166 Fax: (239) 643-6632

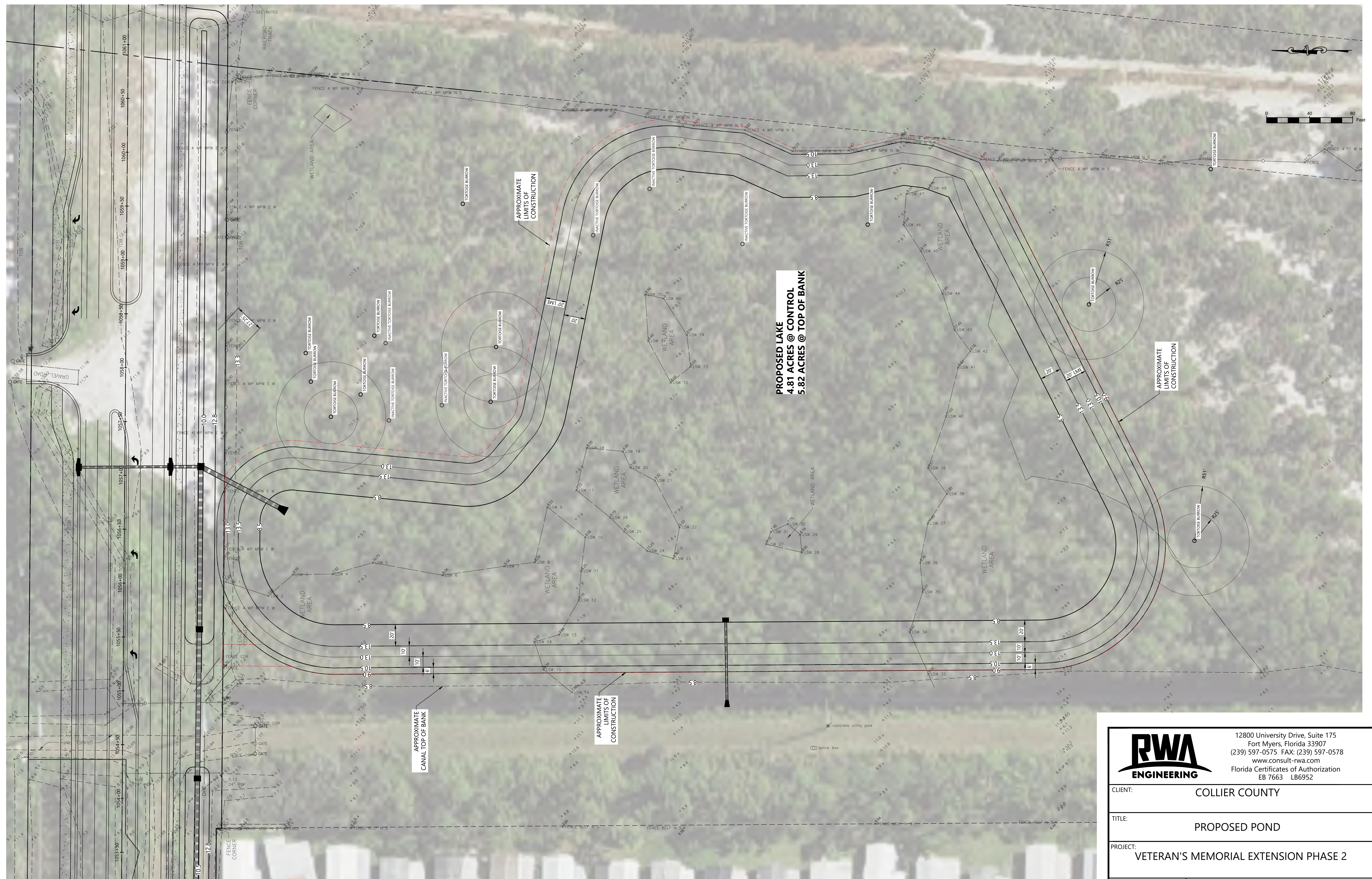
**VETERANS MEMORIAL BLVD EXT. PH II
 OVERALL LISTED SPECIES MAP**

DESIGNED:	MN	REV#	REV BY	DATE	CHK BY	CHANGED
DRAWN BY:	RMJ	2	-	-	-	-
CREATED:	02-27-24	3	-	-	-	-
JOB NO.:	19094.02	4	-	-	-	-
SHEET NO.:	05 OF 13	5	-	-	-	-

SECTION-10 & 11 TOWNSHIP- 48S RANGE- 25E

RY NO. 5875

THESE DRAWINGS ARE FOR PERMITTING PURPOSES ONLY AND ARE NOT INTENDED FOR CONSTRUCTION USE.



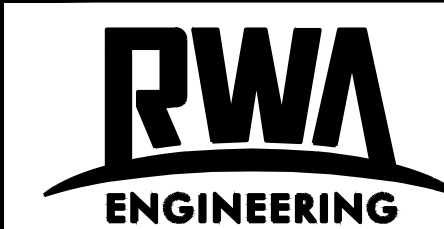
PROPOSED LAKE @ CONTROL
4.81 ACRES @ CONTROL
5.82 ACRES @ TOP OF BANK

APPROXIMATE
LIMITS OF
CONSTRUCTION

APPROXIMATE
LIMITS OF
CONSTRUCTION

APPROXIMATE
CANAL TOP OF BANK

APPROXIMATE
LIMITS OF
CONSTRUCTION



12800 University Drive, Suite 175
 Fort Myers, Florida 33907
 (239) 597-0575 FAX: (239) 597-0578
 www.consult-rwa.com
 Florida Certificates of Authorization
 EB 7663 LB6952

CLIENT:	COLLIER COUNTY
TITLE:	PROPOSED POND
PROJECT:	VETERAN'S MEMORIAL EXTENSION PHASE 2
PROJECT NO.:	190062.00.01
FILE NAME:	M3 1900620001