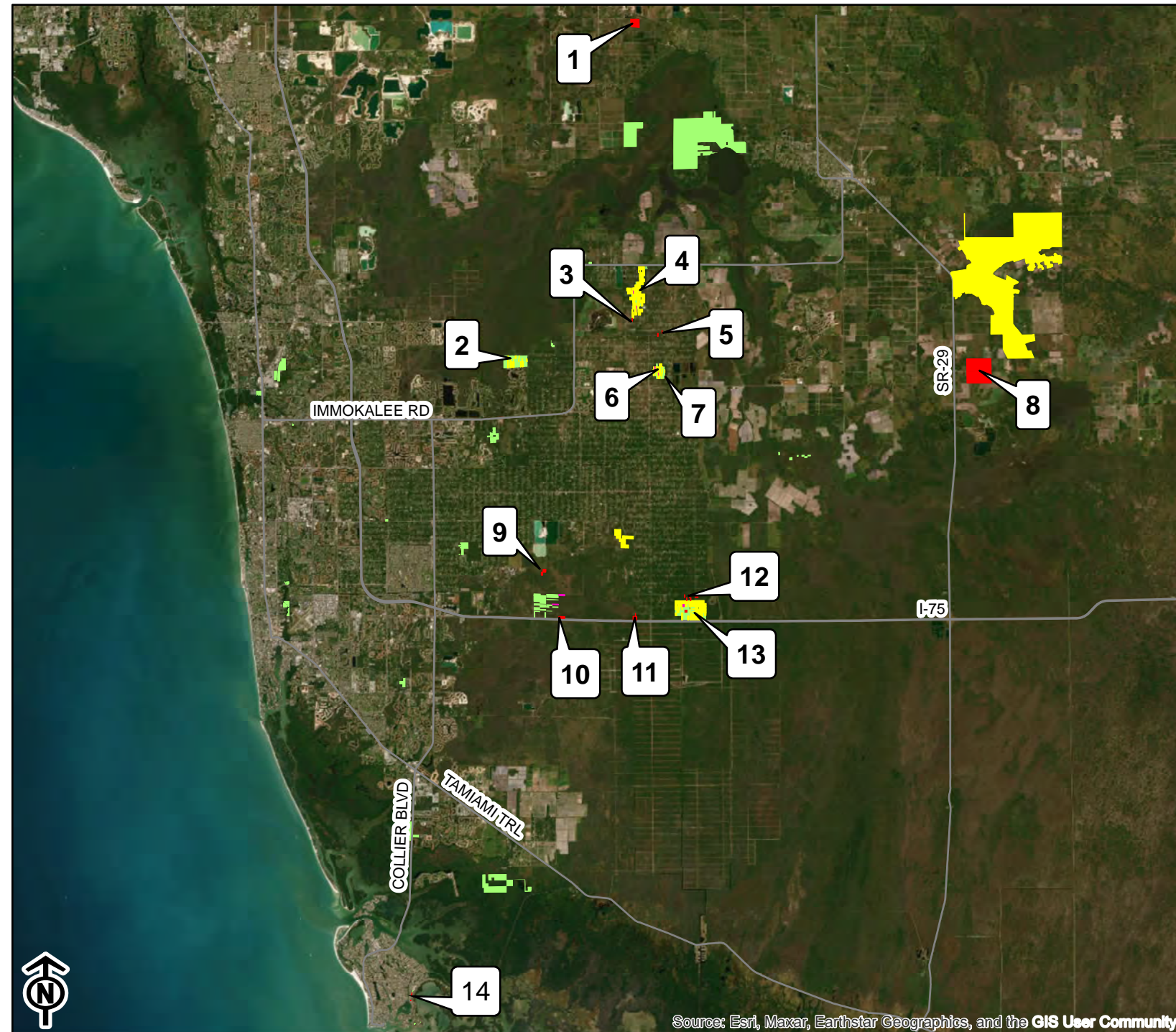


Conservation Collier Cycle 12B Properties - Aerial

Legend

- Conservation Collier Preserves
- A-List Parcel
- Offer Accepted
- Cycle 12B Parcel

- 1 - Wildcat Acres (73.6 ac)
- 2 - Red Maple Swamp Preserve MPP (22 parcels; 60.7 ac)
- 3 - Gonzalez (1.14 ac)
- 4 - Panther Walk Preserve MPP (193 parcels; 375.1 ac)
- 5 - NGGE Scrub TPMA (2 parcels; 3.9 ac)
- 6 - Winchester Head Preserve MPP (36 parcels; 58.1 ac)
- 7 - Lynch (1.14 ac)
- 8 - Wildflowerz Ranch (639.2 ac)
- 9 - Hoffman (15.0 ac)
- 10 - Sarry Trust (13.3 ac)
- 11 - Hendrix House (17.7 ac)
- 12 - Dr. Robert H. Gore III TPMA (7 parcels; 20.77 ac)
- 13 - Dr. Robert H. Gore III MPP (149 parcels; 377.2 ac)
- 14 - Marco Island TPMA (3 parcels; 1.2 ac)



Source: Esri, Maxar, Earthstar Geographics, and the GIS User Community



0








20
Miles

40

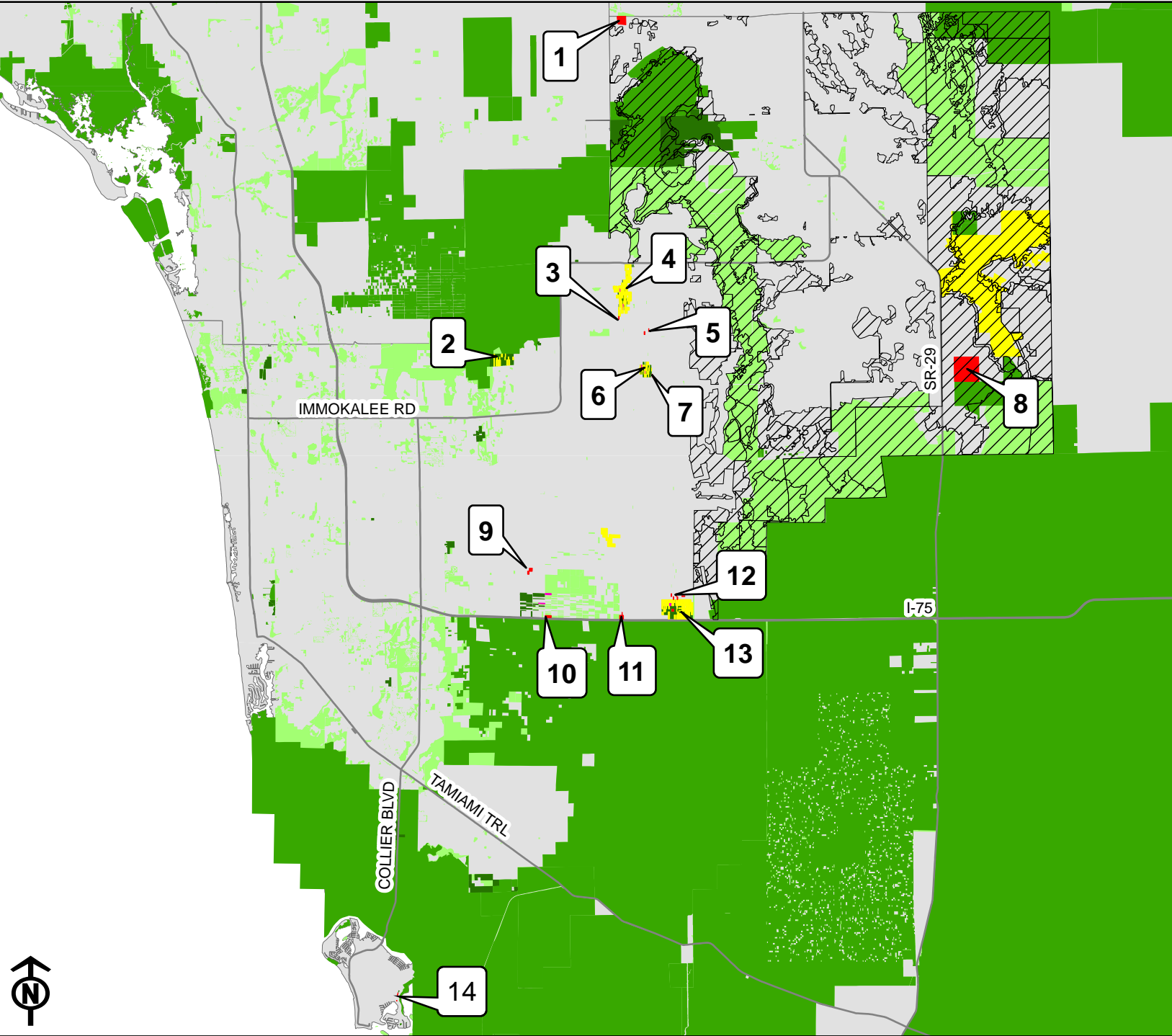


Conservation Collier Cycle 12B Properties - Commissioner Districts

Legend

-  RLSA - Stewardship Sending Areas
-  Conservation Collier Preserves
-  Managed Conservation Areas
-  Other Conservation Areas
-  A-List Parcel
-  Offer Accepted
-  Cycle 12B Parcel

- 1 - Wildcat Acres (73.6 ac)
- 2 - Red Maple Swamp Preserve MPP (22 parcels; 60.7 ac)
- 3 - Gonzalez (1.14 ac)
- 4 - Panther Walk Preserve MPP (193 parcels; 375.1 ac)
- 5 - NGGE Scrub TPMA (2 parcels; 3.9 ac)
- 6 - Winchester Head Preserve MPP (36 parcels; 58.1 ac)
- 7 - Lynch (1.14 ac)
- 8 - Wildflowerz Ranch (639.2 ac)
- 9 - Hoffman (15.0 ac)
- 10 - Sarry Trust (13.3 ac)
- 11 - Hendrix House (17.7 ac)
- 12 - Dr. Robert H. Gore III TPMA (7 parcels; 20.77 ac)
- 13 - Dr. Robert H. Gore III MPP (149 parcels; 377.2 ac)
- 14 - Marco Island TPMA (3 parcels; 1.2 ac)



0

20
Miles

40

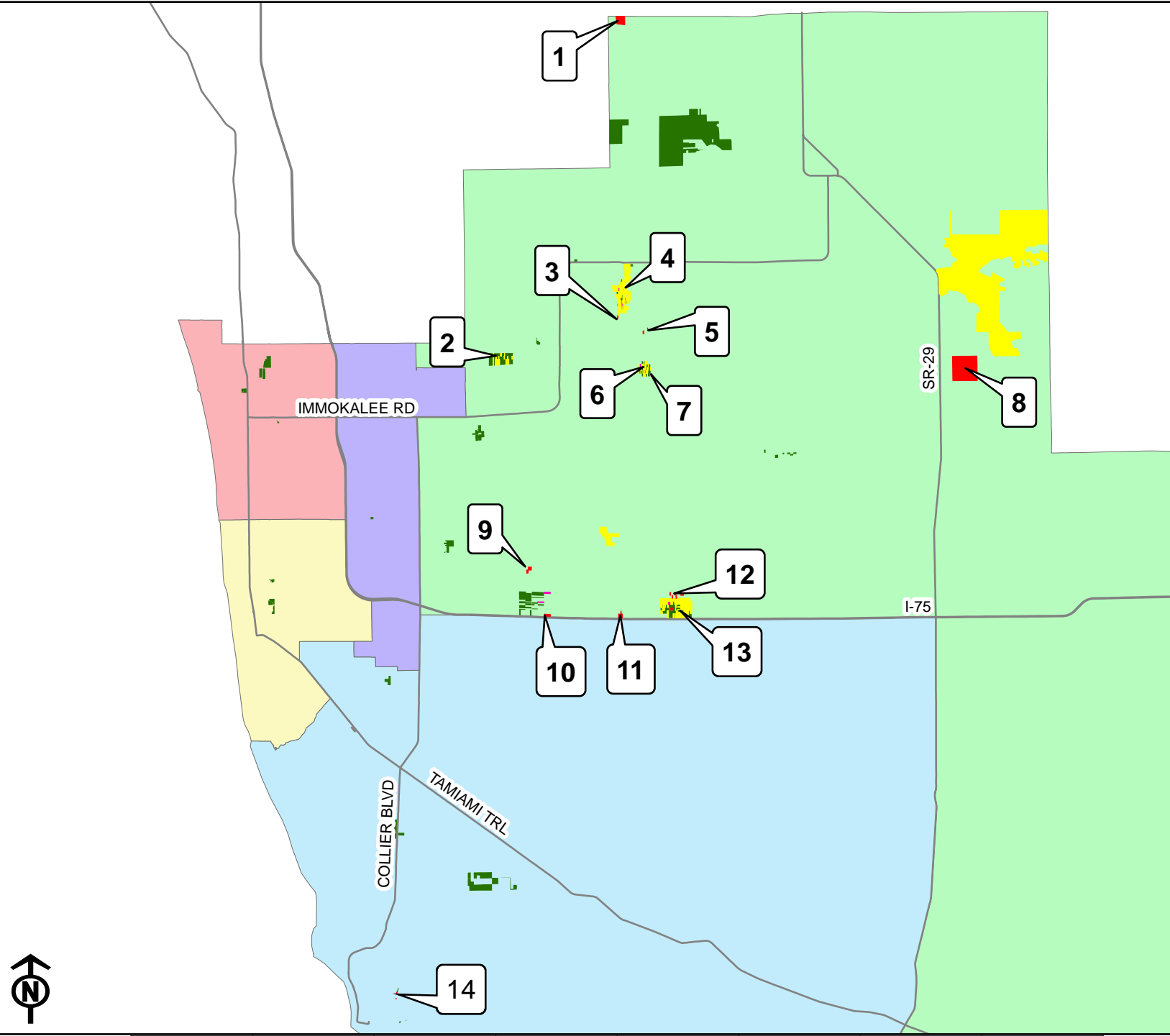


Conservation Collier Cycle 12B Properties - Commissioner Districts

Legend

- Commission District 1
- Commission District 2
- Commission District 3
- Commission District 4
- Commission District 5
- Conservation Collier Preserves
- A-List Parcel
- Offer Accepted
- Cycle 12B Parcel

- 1 - Wildcat Acres (73.6 ac)
- 2 - Red Maple Swamp Preserve MPP (22 parcels; 60.7 ac)
- 3 - Gonzalez (1.14 ac)
- 4 - Panther Walk Preserve MPP (193 parcels; 375.1 ac)
- 5 - NGGE Scrub TPMA (2 parcels; 3.9 ac)
- 6 - Winchester Head Preserve MPP (36 parcels; 58.1 ac)
- 7 - Lynch (1.14 ac)
- 8 - Wildflowerz Ranch (639.2 ac)
- 9 - Hoffman (15.0 ac)
- 10 - Sarry Trust (13.3 ac)
- 11 - Hendrix House (17.7 ac)
- 12 - Dr. Robert H. Gore III TPMA (7 parcels; 20.77 ac)
- 13 - Dr. Robert H. Gore III MPP (149 parcels; 377.2 ac)
- 14 - Marco Island TPMA (3 parcels; 1.2 ac)



0

20
Miles

40

