

PUBLIC UTILITIES IN YOUR COMMUNITY

Matt McLean, P.E.
Engineering and Project
Management
Director

colliercountyfl.gov/publicutilities



COLLIER COUNTY WATER & SEWER DISTRICT

- 24/7/365 operations
- 240 square mile service area
- 2,582 miles of in-ground pipe
- 84,693 service connections
- Over 10 billion gallons of potable water produced annually
- Treat 7.8 billion gallons of wastewater
- Distribute over 5 billion gallons of reclaimed irrigation quality water

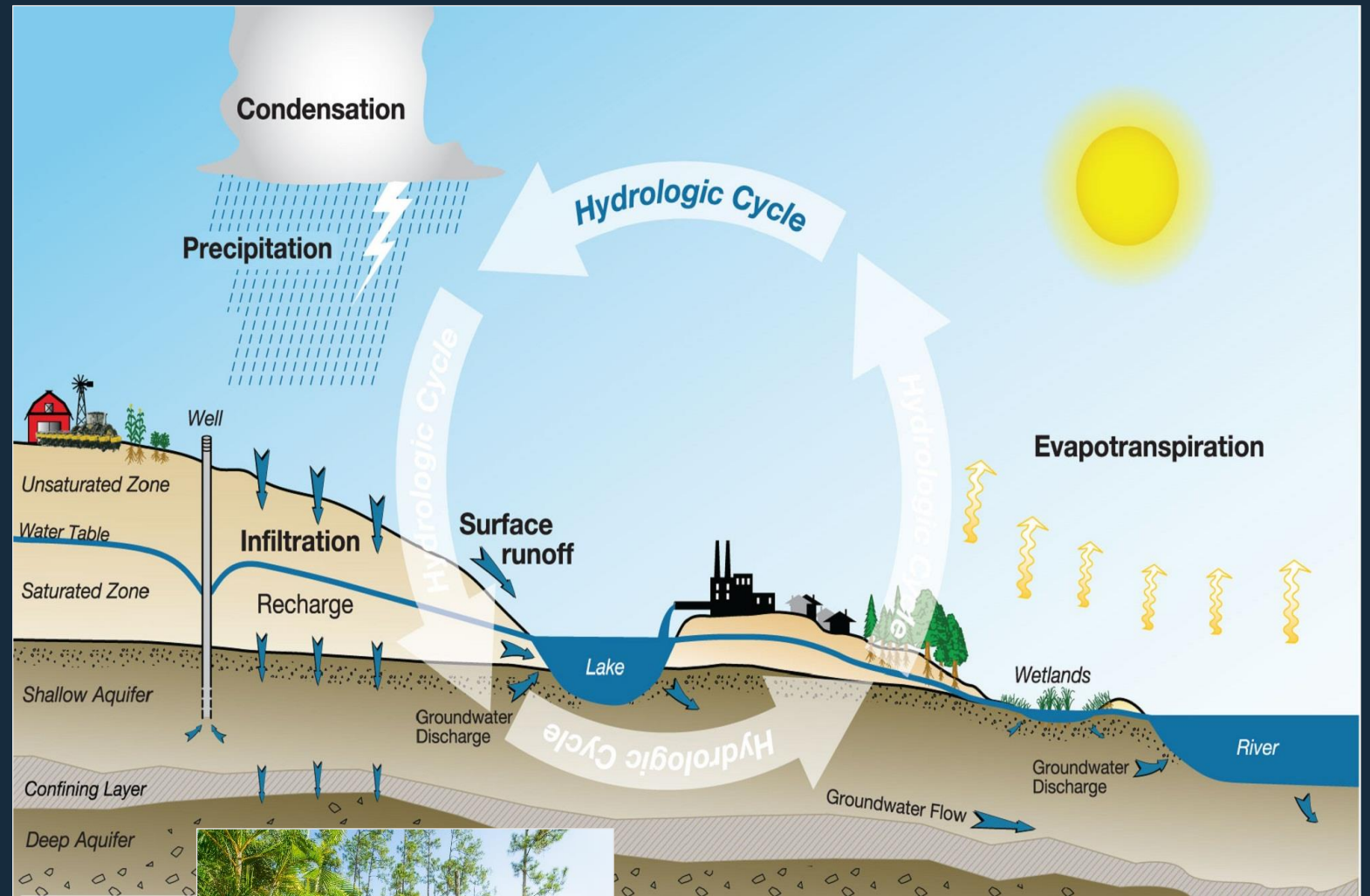


colliercountyfl.gov/publicutilities

WHERE DOES WATER COME FROM?

Hydrologic Cycle

- SWFL – multiple aquifer sources
- Wells



SFWL AQUIFERS

Surficial Aquifer System (Fresh Water Supply)

- Water Table
- Lower Tamiami
- Sandstone

Intermediate Aquifer System (Brackish Water Supply)

- Hawthorn Zone 1
- Lower Hawthorn
- Suwannee
- Ocala

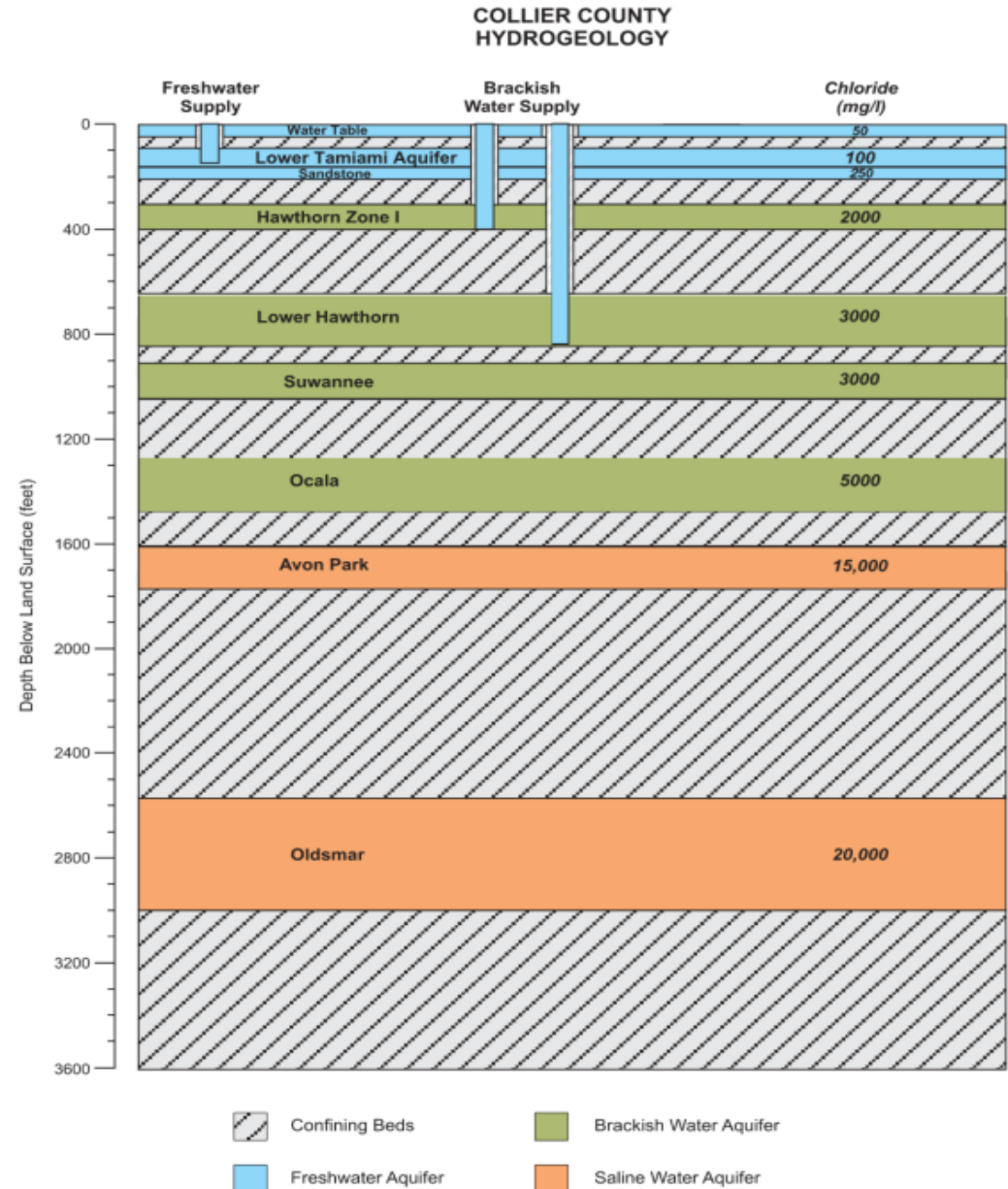
Floridan Aquifer System

- Avon Park
- Oldsmar

Regulated by SFWMD

- CCWSD Wellfields draw from both Surficial and Intermediate Aquifer System

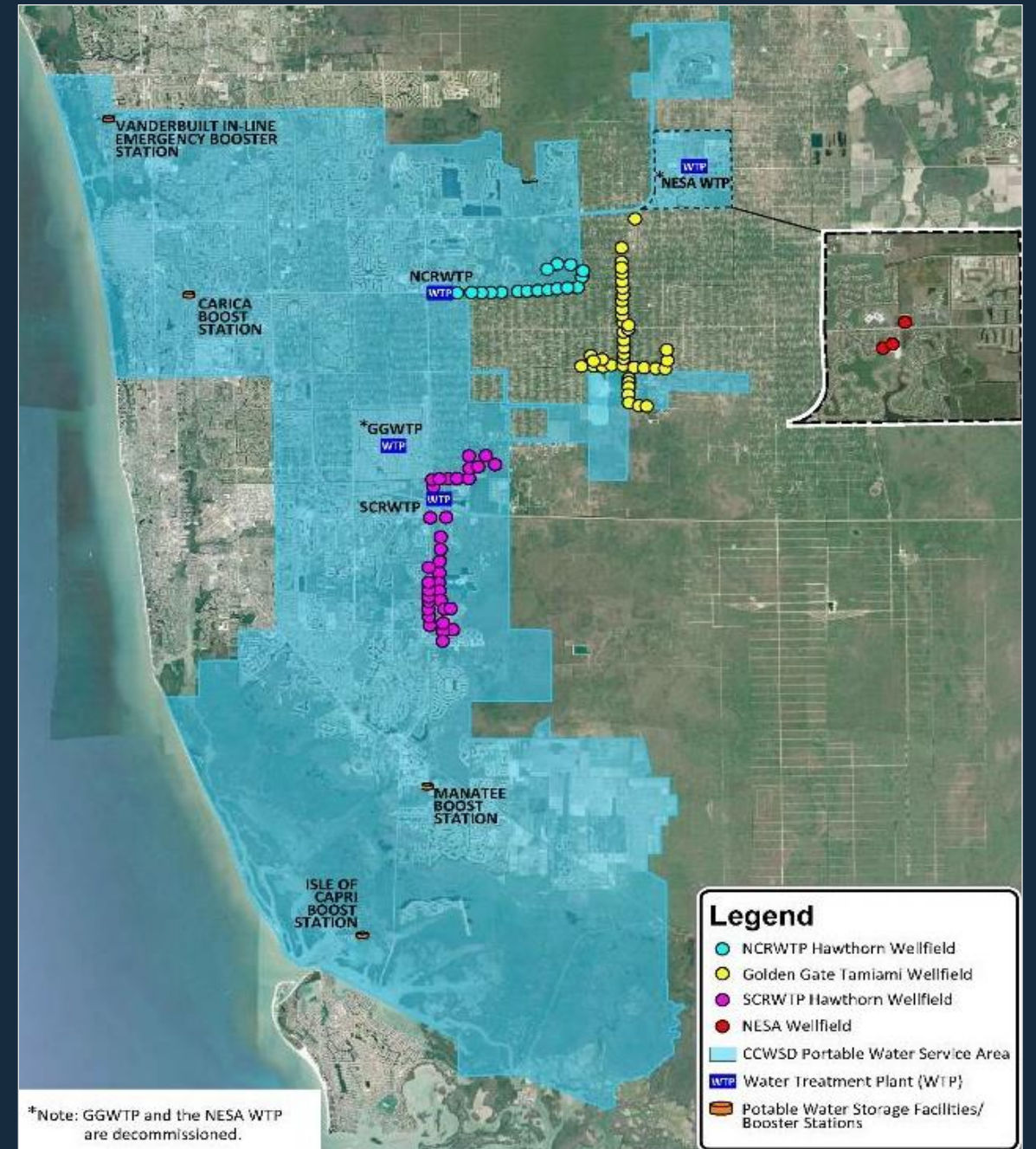
colliercountyfl.gov/publicutilities



CCWSD STEWARDSHIP

- Progressive water, wastewater, irrigation water utility
- Early adoption of reuse/irrigation quality water (1980s)
- Early adoption of desalination (1990s)
- Focus on integrated water resource management
- Water Conservation
 - Low flow fixtures
 - Inverted Rate Structure
 - Higher rates/Higher usage
 - Irrigation Quality availability

colliercountyfl.gov/publicutilities

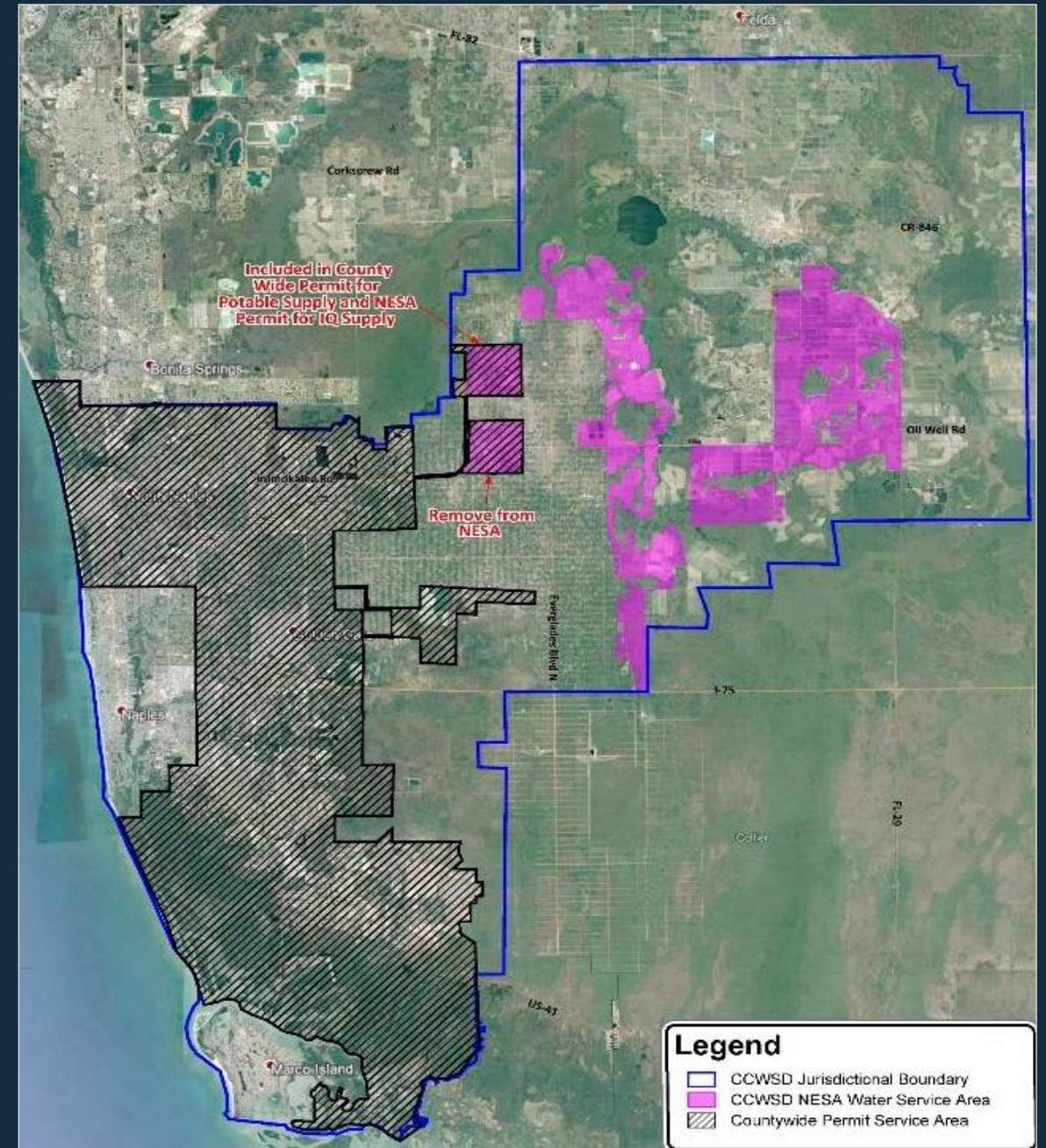


CCWSD EXXPANDED SERVICE AREA

In September 2018, the CCWSD expanded their service district boundary to include future growth areas including areas within the East of 951 Committee Study Area

- To serve growing properties within Rural Lands Stewardship Area
 - Future Towns/Villages
- As part of expansion, decision was made not to serve Golden Gate Estates lots
 - Unless MSTU was formed based on citizen requests

colliercountyfl.gov/publicutilities



NORTHEAST SERVICE AREA FACILITIES

Construction of wastewater plant improves capacity and reliability of the county's wastewater system

- Interim wastewater treatment plant
- Produces IQ water for irrigation
- Potable & IQ Water storage tanks
- Pump stations and associated pipelines

colliernesa.com



EXPANSION TO NEW DEVELOPMENTS

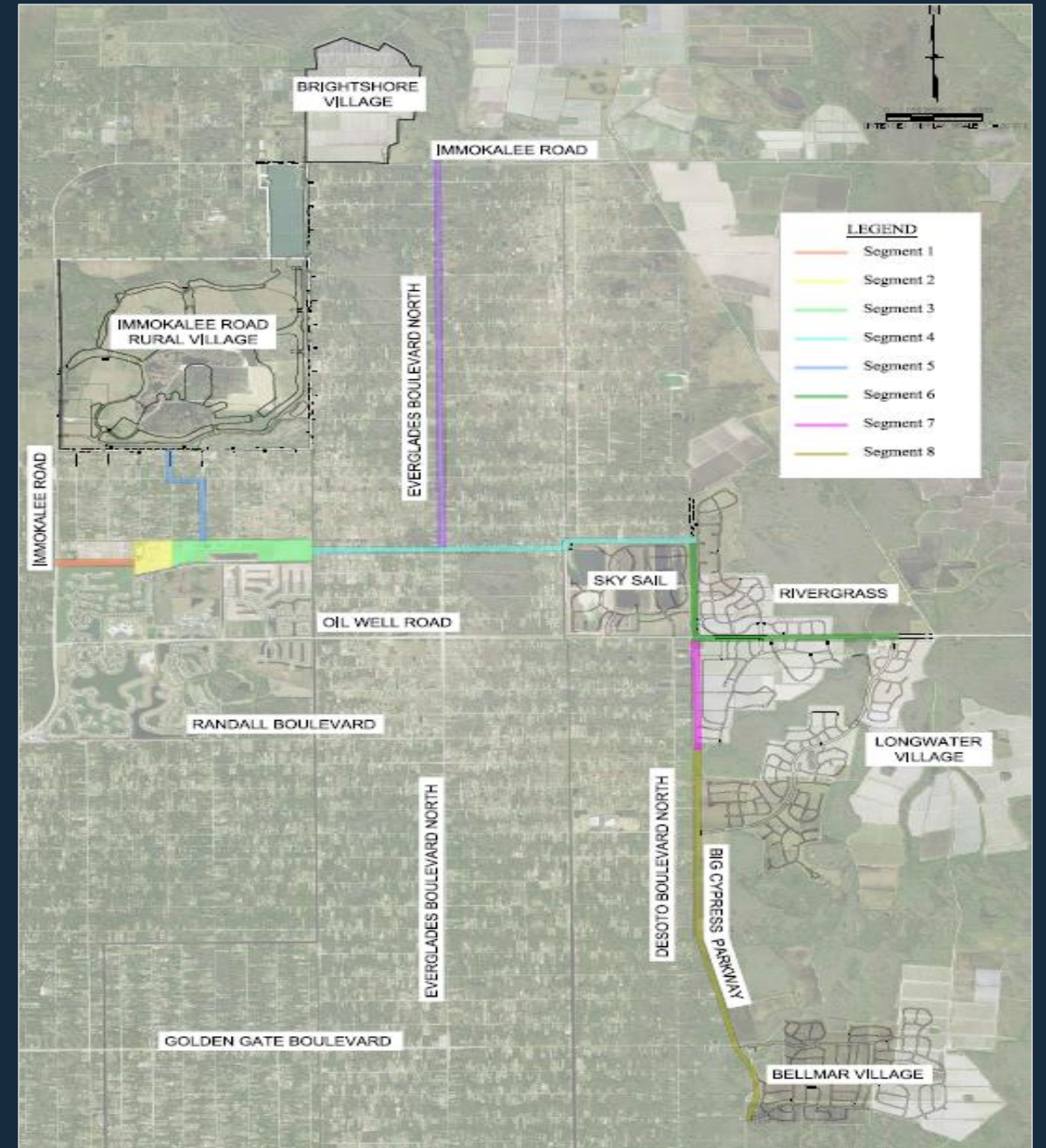
Water, wastewater and IQ water facilities to serve new communities as well as the entire county system

- Orange Tree (four square miles)
- SkySail (current)
- Rivergrass Village (under design)
- Town of Big Cypress (under design)
- Brightshore Village (under design)
- Immokalee Road Rural Village (future)
- Belmar (future)
- Rod & Gun Club (future)
- Horse Trials (future)

Fire Protection

Growth pays for growth (Impact Fees)

colliernesa.com



NEIGHBORHOOD COMMUNICATION

Information about construction in the
Northeast Service Area

Hotline:
239-337-1071

Project e-mail: info@colliernesa.com

NESA Project updates and notices:
colliernesa.com



QUESTIONS?



colliercountyfl.gov/publicutilities

