

ORDINANCE NO. 22-__09

AN ORDINANCE OF THE BOARD OF COUNTY COMMISSIONERS OF COLLIER COUNTY, FLORIDA, AMENDING ORDINANCE NO. 02-61, AS AMENDED, THE FIDDLER'S CREEK COMMUNITY DEVELOPMENT DISTRICT #2; AMENDING THE DISTRICT BY EXPANDING THE EXTERNAL BOUNDARIES BY APPROXIMATELY 37.87 ACRES, INCREASING THE SIZE OF THE DISTRICT FROM APPROXIMATELY 849.73 ACRES TO APPROXIMATELY 887.60 ACRES; PROVIDING FOR CONFLICT AND SEVERABILITY; PROVIDING FOR INCLUSION IN THE CODE OF LAWS AND ORDINANCES; AND PROVIDING FOR AN EFFECTIVE DATE.

WHEREAS, on November 19, 2002, the Board of County Commissioners (Board) adopted Ordinance No. 2002-61 establishing the Fiddler's Creek Community Development District #2 (District), as a community development district within the meaning of Chapter 190, Florida Statutes; and

WHEREAS, the original boundaries set forth in Ordinance 2002-61 established boundaries resulting in 998.79 acres; and

WHEREAS, these boundaries have been previously modified by Ordinance 2014-26, Ordinance 2017-16, Ordinance 2019-15, and Ordinance 2019-32; and

WHEREAS, Fiddler's Creek Community Development District #2 (Petitioner), through its counsel, Gregory L. Urbancic and Anthony P. Pires, Jr., has petitioned the Board of County Commissioners (Board) of Collier County, Florida, a political subdivision of the State of Florida, to expand the boundaries of the District by approximately 37.87 acres, as authorized by Section 190.046 (1), Florida Statutes, increasing the size of the District to approximately 887.60 acres; and

WHEREAS, Petitioner has simultaneously filed a Petition (CDD #1 Amendment Petition) with the Florida Land and Water Adjudicatory Commission (FLAWAC) for the amendment of Fiddler's Creek Community Development District# 1 (CDD # 1); and

WHEREAS, approval of this Petition is completely contingent upon the approval of the CDD #1 Amendment Petition, so Petitioner has requested that this Ordinance be effective as of

the date that the rule amendment process by FLAWAC of a Rule amending CDD #1 is complete as evidenced by entry of the amended rule for CDD# 1 by the Florida Secretary of State; and

WHEREAS, the Board considered the Petition at a duly noticed public hearing; and

WHEREAS, upon consideration of the Petition, the Board determined the following:

1. The statements made within the Petition are true and correct.
2. Amending the Ordinance is not inconsistent with any applicable element or portion of the state and local comprehensive plan.
3. The land within the District continues to be of sufficient size, to be sufficiently compact, and to be sufficiently contiguous to be developable as a functionally interrelated community.
4. The District continues to be the best alternative available for delivering community development services and facilities to the area serviced by the District.
5. The service and facilities of the District will continue to not be incompatible with the capacity and uses of any existing local and regional community development services and facilities.
6. The area to be serviced by the District remains amenable to separate special district governance;
7. The Amendment will not expand the district greater than 50 percent of the land in the initial district, and in no event greater than 1,000 acres on a cumulative net basis; and

WHEREAS, the Board finds that Petitioner has otherwise satisfied all requirements set forth in Section 190.046, Florida Statutes, and finds it to be in the best interest of all parties to make the effective date of this Ordinance contingent on the approval of the CDD #1 Amendment Petition by FLAWAC.

NOW, THEREFORE, BE IT ORDAINED BY THE BOARD OF COUNTY COMMISSIONERS OF COLLIER COUNTY, FLORIDA that:

SECTION ONE: AMENDMENT OF ORDINANCE NO. 02-61, AS AMENDED.

The previous legal description of the District as depicted in Exhibit A, is hereby superseded and replaced by the legal description of the District described in Exhibit B, reflecting the areas added to the District through this amendment.

SECTION TWO: EXTERNAL BOUNDARIES OF THE DISTRICT.

The external boundaries of the District encompass 887.60 acres of land, more or less, as described in Exhibit B.

SECTION THREE: CONFLICT AND SEVERABILITY.

In the event this Ordinance conflicts with any other ordinance of Collier County or other applicable law, the more restrictive shall apply. If any phrase or portion of this Ordinance is held invalid or unconstitutional by any court of competent jurisdiction, such portion shall be deemed a separate, distinct and independent provision and such holding shall not affect the validity of the remaining portion.

SECTION FOUR: INCLUSION IN THE CODE OF LAWS AND ORDINANCES.

The provisions of this Ordinance shall become and be made a part of the Code of Laws and Ordinances of Collier County, Florida. The sections of the Ordinances may be renumbered or relettered to accomplish such, and the word "ordinance" may be changed to "section," "article," or any other appropriate word.

SECTION FIVE: EFFECTIVE DATE.

This Ordinance shall not become effective until the date that the rule amendment process by FLAWAC of a Rule amending CDD # 1, as requested by the CDD #1 Amendment Petition dated November 18, 2021, is complete as evidenced by entry of the amended rule for CDD # 1 by the Florida Secretary of State and the filing of an amended notice of establishment for CDD #1 in the Public Records of Collier County, Florida. If the CDD #1 Amendment Petition is denied by FLAWAC or the rule amendment process by FLAWAC of a Rule amending CDD # 1 is not complete by November 18, 2022, this Ordinance shall be rendered void.

PASSED AND DULY ADOPTED by the Board of County Commissioners of Collier County, Florida, this 22nd day of March, 2022.

ATTEST:
CRYSTAL K. KINZEL, Clerk of Courts

BOARD OF COUNTY COMMISSIONERS
COLLIER COUNTY, FLORIDA

By: Mende Kajan
Deputy Clerk
Attest as to Chairman's
signature only.

By: William L. McDaniel, Jr.
Chairman

Approved as to form and legality:
[Signature]

Jeffrey A. Klatzkow, County Attorney

This ordinance filed with the
Secretary of State's Office the
28th day of March 2022
and acknowledgement of that
filing received this 30th day
of March 2022
By: [Signature]
Deputy Clerk

EXHIBIT "A"

(17 pages)

\\na-026\HWDA-572\12001-Survey\Projects By Name Of Location\POLCDS\1990701 C001 C001 REVISED\SKETCHES\C002 Revision 01\C002 SKD_Rev2.dwg 9/7/2016 3:41:01 PM Plotted by: RdkYornil

LEGAL DESCRIPTION:

A PARCEL OF LAND LOCATED IN SECTIONS 11, 13 AND 14, TOWNSHIP 51 SOUTH, RANGE 28 EAST, AND SECTION 18, TOWNSHIP 51 SOUTH, RANGE 27 EAST, COLLIER COUNTY, FLORIDA AND BEING MORE PARTICULARLY DESCRIBED AS FOLLOWS:

BEGIN AT THE NORTHWEST CORNER OF SECTION 13, TOWNSHIP 51 SOUTH, RANGE 26 EAST, COLLIER COUNTY, FLORIDA; THENCE ALONG THE NORTH LINE OF SAID SECTION 13, RUN S89°55'46"E FOR A DISTANCE OF 4688.27 FEET, TO A POINT ON THE SOUTHERLY RIGHT-OF-WAY LINE OF U.S. 41 (TAMIAMI TRAIL), A 200' WIDE RIGHT-OF-WAY; THENCE ALONG SAID SOUTHERLY RIGHT-OF-WAY LINE, RUN S54°21'29"E FOR A DISTANCE OF 3793.58 FEET; THENCE LEAVING SAID SOUTHERLY RIGHT-OF-WAY LINE, RUN S35°39'17"W FOR A DISTANCE OF 107.40 FEET, TO A POINT OF NON-TANGENTIAL CIRCULAR CURVATURE; THENCE ALONG A CURVE TO THE RIGHT, HAVING A RADIUS OF 350.00 FEET, THROUGH A CENTRAL ANGLE OF 66°22'03", AND BEING SUBTENDED BY A CHORD OF 383.13 FEET, AT A BEARING OF S12°43'35"E, FOR AN ARC LENGTH OF 405.42 FEET, TO A POINT OF TANGENTIAL REVERSE CURVATURE; THENCE ALONG A CURVE TO THE LEFT, HAVING A RADIUS OF 150.00 FEET, THROUGH A CENTRAL ANGLE OF 110°27'50", AND BEING SUBTENDED BY A CHORD OF 246.44 FEET, AT A BEARING OF S34°46'28"E, FOR AN ARC LENGTH OF 289.19 FEET; THENCE RUN N89°59'37"E FOR A DISTANCE OF 58.44 FEET, TO A POINT OF TANGENTIAL CIRCULAR CURVATURE; THENCE ALONG A CURVE TO THE LEFT, HAVING A RADIUS OF 20.00 FEET, THROUGH A CENTRAL ANGLE OF 52°30'17", AND BEING SUBTENDED BY A CHORD OF 17.69 FEET, AT A BEARING OF N63°44'28"E, FOR AN ARC LENGTH OF 18.33 FEET, TO A POINT OF TANGENTIAL REVERSE CURVATURE; THENCE ALONG A CURVE TO THE RIGHT, HAVING A RADIUS OF 95.00 FEET, THROUGH A CENTRAL ANGLE OF 15°00'34", AND BEING SUBTENDED BY A CHORD OF 24.82 FEET, AT A BEARING OF N44°59'37"E, FOR AN ARC LENGTH OF 24.89 FEET, TO A POINT OF TANGENTIAL REVERSE CURVATURE; THENCE ALONG A CURVE TO THE LEFT, HAVING A RADIUS OF 20.00 FEET, THROUGH A CENTRAL ANGLE OF 52°30'17", AND BEING SUBTENDED BY A CHORD OF 17.69 FEET, AT A BEARING OF N26°14'45"E, FOR AN ARC LENGTH OF 18.33 FEET; THENCE RUN N89°59'37"E FOR A DISTANCE OF 100.00 FEET, TO A POINT OF NON-TANGENTIAL CIRCULAR CURVATURE; THENCE ALONG A CURVE TO THE LEFT, HAVING A RADIUS OF 20.00 FEET, THROUGH A CENTRAL ANGLE OF 52°30'17", AND BEING SUBTENDED BY A CHORD OF 17.69 FEET, AT A BEARING OF S26°15'32"E, FOR AN ARC LENGTH OF 18.33 FEET, TO A POINT OF TANGENTIAL REVERSE CURVATURE; THENCE ALONG A CURVE TO THE RIGHT, HAVING A RADIUS OF 95.00 FEET, THROUGH A CENTRAL ANGLE OF 15°00'34", AND BEING SUBTENDED BY A CHORD OF 24.82 FEET, AT A BEARING OF S45°00'23"E, FOR AN ARC LENGTH OF 24.89 FEET, TO A POINT OF TANGENTIAL REVERSE CURVATURE; THENCE ALONG A CURVE TO THE LEFT, HAVING A RADIUS OF 20.00 FEET, THROUGH A CENTRAL ANGLE OF 52°30'11", AND BEING SUBTENDED BY A CHORD OF 17.69 FEET, AT A BEARING OF S63°45'11"E, FOR AN ARC LENGTH OF 18.33 FEET; THENCE RUN S00°00'23"E FOR A DISTANCE OF 130.00 FEET; THENCE RUN N89°59'37"E FOR A DISTANCE OF 113.79 FEET; THENCE RUN S00°00'23"E FOR A DISTANCE OF 150.36 FEET, TO A POINT OF TANGENTIAL CIRCULAR CURVATURE; THENCE ALONG A CURVE TO THE RIGHT, HAVING A RADIUS OF 320.00 FEET, THROUGH A CENTRAL ANGLE OF 29°39'13", AND BEING SUBTENDED BY A CHORD OF 163.77 FEET, AT A BEARING OF S14°49'13"W, FOR AN ARC LENGTH OF 165.82 FEET, TO A POINT OF TANGENTIAL COMPOUND CURVATURE; THENCE ALONG A CURVE TO THE RIGHT, HAVING A RADIUS OF 1190.00 FEET, THROUGH A CENTRAL ANGLE OF 18°36'36", AND BEING SUBTENDED BY A CHORD OF 384.82 FEET, AT A BEARING OF S38°57'08"W, FOR AN ARC LENGTH OF 386.52 FEET, TO A POINT OF NON-TANGENTIAL COMPOUND CURVATURE; THENCE ALONG A CURVE TO THE RIGHT, HAVING A RADIUS OF 45.00 FEET, THROUGH A CENTRAL ANGLE OF 59°39'38", AND BEING SUBTENDED BY A CHORD OF 44.77 FEET, AT A BEARING OF S44°45'59"E, FOR AN ARC LENGTH OF 46.86 FEET, TO A POINT OF REVERSE CURVATURE; THENCE ALONG A CURVE TO THE LEFT, HAVING A RADIUS OF 62.58 FEET, THROUGH A CENTRAL ANGLE OF 18°38'25", AND BEING SUBTENDED BY A CHORD OF 20.27 FEET, AT A BEARING OF S24°15'23"E, FOR AN ARC LENGTH OF 20.36 FEET, TO A POINT OF REVERSE CURVATURE; THENCE ALONG A CURVE TO THE RIGHT, HAVING A RADIUS OF 45.00 FEET, THROUGH A CENTRAL ANGLE OF 61°46'37", AND BEING SUBTENDED BY A CHORD OF 46.20 FEET, AT A BEARING OF S02°41'17"E, FOR AN ARC LENGTH OF 48.52 FEET; THENCE RUN S28°12'02"W FOR A DISTANCE OF 70.46 FEET, TO A POINT OF TANGENTIAL CIRCULAR CURVATURE; THENCE ALONG A CURVE TO THE LEFT, HAVING A RADIUS OF 300.00 FEET, THROUGH A CENTRAL ANGLE OF 26°33'16", AND BEING SUBTENDED BY A CHORD OF 137.80 FEET, AT A BEARING OF S14°55'24"W, FOR AN ARC LENGTH OF 139.04 FEET, TO A POINT OF TANGENTIAL REVERSE CURVATURE; THENCE ALONG A CURVE TO THE RIGHT, HAVING A RADIUS OF 300.00 FEET, THROUGH A CENTRAL ANGLE OF 74°19'47", AND BEING SUBTENDED BY A CHORD OF 362.47 FEET, AT A BEARING OF S38°48'40"W, FOR AN ARC LENGTH OF 389.19 FEET, TO A POINT OF TANGENTIAL REVERSE CURVATURE; THENCE ALONG A CURVE TO THE LEFT, HAVING A RADIUS OF 300.00 FEET, THROUGH A CENTRAL ANGLE OF 85°58'55", AND BEING SUBTENDED BY A CHORD OF 409.13 FEET, AT A BEARING OF S32°59'08"W, FOR AN ARC LENGTH OF 450.20 FEET, TO A POINT OF TANGENTIAL REVERSE CURVATURE; THENCE ALONG A CURVE TO THE RIGHT, HAVING A RADIUS OF 45.00 FEET, THROUGH A CENTRAL ANGLE OF 111°49'56", AND BEING SUBTENDED BY A CHORD OF 74.54 FEET, AT A BEARING OF S45°54'37"W, FOR AN ARC LENGTH OF 87.83 FEET; THENCE RUN N78°10'25"W FOR A DISTANCE OF 194.68 FEET, TO A POINT OF TANGENTIAL CIRCULAR CURVATURE; THENCE ALONG A CURVE TO THE RIGHT, HAVING A RADIUS OF 45.00 FEET, THROUGH A CENTRAL ANGLE OF 116°41'26", AND BEING SUBTENDED BY A CHORD OF 76.61 FEET, AT A BEARING OF N19°48'41"W, FOR AN ARC LENGTH OF 91.65 FEET; THENCE RUN N38°31'03"E FOR A DISTANCE OF 111.08 FEET; THENCE RUN N51°28'57"W FOR A DISTANCE OF 105.27 FEET, TO A POINT OF NON-TANGENTIAL CIRCULAR CURVATURE; THENCE ALONG A CURVE TO THE RIGHT, HAVING A RADIUS OF 365.00 FEET, THROUGH A CENTRAL ANGLE OF 75°57'07", AND BEING SUBTENDED BY A CHORD OF 449.19 FEET, AT A BEARING OF S78°42'20"W, FOR AN ARC LENGTH OF 483.85 FEET, TO A POINT OF NON-TANGENTIAL COMPOUND CURVATURE; THENCE ALONG A CURVE TO THE RIGHT, HAVING A RADIUS OF 45.00 FEET, THROUGH A CENTRAL ANGLE OF 107°40'34", AND BEING SUBTENDED BY A CHORD OF 72.66 FEET, AT A BEARING OF S16°58'44"W, FOR AN ARC LENGTH OF 84.57 FEET, TO A POINT OF NON-TANGENTIAL COMPOUND CURVATURE; THENCE ALONG A CURVE TO THE LEFT, HAVING A RADIUS OF 260.00 FEET, THROUGH A CENTRAL ANGLE OF 74°43'05", AND BEING SUBTENDED BY A CHORD OF 315.54 FEET, AT A BEARING OF S33°46'55"W, FOR AN ARC LENGTH OF 339.06 FEET; THENCE RUN S03°34'37"E FOR A DISTANCE OF 87.88 FEET, TO A POINT OF TANGENTIAL CIRCULAR CURVATURE; THENCE ALONG A CURVE TO THE RIGHT, HAVING A RADIUS OF 225.00 FEET, THROUGH A CENTRAL ANGLE OF 94°37'47", AND BEING SUBTENDED BY A CHORD OF 330.79 FEET, AT A BEARING OF S43°44'16"W, FOR AN ARC LENGTH OF 371.61 FEET; THENCE RUN N88°56'50"W FOR A DISTANCE OF 322.37 FEET, TO A POINT OF TANGENTIAL CIRCULAR CURVATURE; THENCE ALONG A CURVE TO THE RIGHT, HAVING A RADIUS OF 285.00 FEET, THROUGH A CENTRAL ANGLE OF 18°35'10", AND BEING SUBTENDED BY A CHORD OF 92.05 FEET, AT A BEARING OF N79°39'15"W, FOR AN ARC LENGTH OF 92.45 FEET; THENCE RUN N88°56'38"W FOR A DISTANCE OF 664.33 FEET, TO A POINT OF TANGENTIAL CIRCULAR CURVATURE; THENCE ALONG A CURVE TO THE LEFT, HAVING A RADIUS OF 80.00 FEET, THROUGH A CENTRAL ANGLE OF 42°52'13", AND BEING SUBTENDED BY A CHORD OF 58.47 FEET, AT A BEARING OF S69°37'15"W, FOR AN ARC LENGTH OF 59.86 FEET, TO A POINT OF COMPOUND CURVATURE; THENCE ALONG A CURVE TO THE LEFT, HAVING A RADIUS OF 81.20 FEET, THROUGH A CENTRAL ANGLE OF 94°11'25", AND BEING SUBTENDED BY A CHORD OF 118.96 FEET, AT A BEARING OF N84°43'04"W, FOR AN ARC LENGTH OF 133.49 FEET;

DRAWN BY: R.A.K.	DATE: 8/7/16
SHEET 1	OF SHEET 5
SEC-TWP-RGE: 11,13,14-S19-26E & 18-S13-27E	



950 Encore Way
Naples, FL 34110
Phone: (239) 254-2000
Florida Certificate of
Authorization No. 1772

LEGAL DESCRIPTION
COMMUNITY DEVELOPMENT DISTRICT 2

DRAWING NO. B-7366-2
PROJECT NO. 1998070
FILE NAME C002 SKD_Rev2.dwg

~~XXXXXXXX~~

CAO

(CONTINUED FROM SHEET 1 OF 5)

THENCE RUN S04°47'07"W FOR A DISTANCE OF 126.86 FEET; THENCE RUN N77°46'12"W FOR A DISTANCE OF 78.84 FEET; THENCE RUN N88°51'53"W FOR A DISTANCE OF 65.94 FEET; THENCE RUN N84°45'39"W FOR A DISTANCE OF 685.72 FEET; THENCE RUN S05°42'49"W FOR A DISTANCE OF 66.04 FEET; THENCE RUN N84°17'11"W FOR A DISTANCE OF 48.52 FEET; THENCE RUN S28°00'46"W FOR A DISTANCE OF 219.00 FEET; THENCE RUN N61°59'14"W FOR A DISTANCE OF 667.71 FEET, TO A POINT OF TANGENTIAL CIRCULAR CURVATURE; THENCE ALONG A CURVE TO THE LEFT, HAVING A RADIUS OF 200.00 FEET, THROUGH A CENTRAL ANGLE OF 23°47'41", AND BEING SUBTENDED BY A CHORD OF 82.46 FEET, AT A BEARING OF N73°53'04"W, FOR AN ARC LENGTH OF 83.06 FEET, TO A POINT OF TANGENTIAL REVERSE CURVATURE; THENCE ALONG A CURVE TO THE RIGHT, HAVING A RADIUS OF 300.00 FEET, THROUGH A CENTRAL ANGLE OF 16°27'34", AND BEING SUBTENDED BY A CHORD OF 85.89 FEET, AT A BEARING OF N77°33'08"W, FOR AN ARC LENGTH OF 86.18 FEET, TO A POINT OF TANGENTIAL COMPOUND CURVATURE; THENCE ALONG A CURVE TO THE RIGHT, HAVING A RADIUS OF 150.00 FEET, THROUGH A CENTRAL ANGLE OF 61°29'33", AND BEING SUBTENDED BY A CHORD OF 163.37 FEET, AT A BEARING OF N38°34'34"W, FOR AN ARC LENGTH OF 160.99 FEET, TO A POINT OF TANGENTIAL REVERSE CURVATURE; THENCE ALONG A CURVE TO THE LEFT, HAVING A RADIUS OF 137.00 FEET, THROUGH A CENTRAL ANGLE OF 112°55'12", AND BEING SUBTENDED BY A CHORD OF 228.38 FEET, AT A BEARING OF N84°17'24"W, FOR AN ARC LENGTH OF 270.00 FEET; THENCE RUN S59°15'00"W FOR A DISTANCE OF 59.92 FEET, TO A POINT OF TANGENTIAL CIRCULAR CURVATURE; THENCE ALONG A CURVE TO THE RIGHT, HAVING A RADIUS OF 135.00 FEET, THROUGH A CENTRAL ANGLE OF 71°28'36", AND BEING SUBTENDED BY A CHORD OF 157.70 FEET, AT A BEARING OF N85°00'42"W, FOR AN ARC LENGTH OF 168.41 FEET, TO A POINT OF TANGENTIAL REVERSE CURVATURE; THENCE ALONG A CURVE TO THE LEFT, HAVING A RADIUS OF 250.00 FEET, THROUGH A CENTRAL ANGLE OF 38°03'09", AND BEING SUBTENDED BY A CHORD OF 163.00 FEET, AT A BEARING OF N68°17'59"W, FOR AN ARC LENGTH OF 166.04 FEET; THENCE RUN N87°19'33"W FOR A DISTANCE OF 86.72 FEET, TO A POINT OF TANGENTIAL CIRCULAR CURVATURE; THENCE ALONG A CURVE TO THE RIGHT, HAVING A RADIUS OF 10.00 FEET, THROUGH A CENTRAL ANGLE OF 80°16'50", AND BEING SUBTENDED BY A CHORD OF 12.88 FEET, AT A BEARING OF N47°11'08"W, FOR AN ARC LENGTH OF 14.01 FEET; THENCE RUN N07°02'43"W FOR A DISTANCE OF 40.73 FEET, TO A POINT OF TANGENTIAL CIRCULAR CURVATURE; THENCE ALONG A CURVE TO THE LEFT, HAVING A RADIUS OF 100.00 FEET, THROUGH A CENTRAL ANGLE OF 54°47'04", AND BEING SUBTENDED BY A CHORD OF 82.02 FEET, AT A BEARING OF N34°26'15"W, FOR AN ARC LENGTH OF 95.62 FEET, TO A POINT OF TANGENTIAL COMPOUND CURVATURE; THENCE ALONG A CURVE TO THE LEFT, HAVING A RADIUS OF 550.00 FEET, THROUGH A CENTRAL ANGLE OF 13°06'41", AND BEING SUBTENDED BY A CHORD OF 125.58 FEET, AT A BEARING OF N68°23'07"W, FOR AN ARC LENGTH OF 125.86 FEET, TO A POINT OF TANGENTIAL REVERSE CURVATURE; THENCE ALONG A CURVE TO THE RIGHT, HAVING A RADIUS OF 500.00 FEET, THROUGH A CENTRAL ANGLE OF 46°56'36", AND BEING SUBTENDED BY A CHORD OF 398.30 FEET, AT A BEARING OF N51°28'09"W, FOR AN ARC LENGTH OF 409.66 FEET; THENCE RUN N27°59'51"W FOR A DISTANCE OF 47.49 FEET, TO A POINT OF TANGENTIAL CIRCULAR CURVATURE; THENCE ALONG A CURVE TO THE LEFT, HAVING A RADIUS OF 260.00 FEET, THROUGH A CENTRAL ANGLE OF 60°36'37", AND BEING SUBTENDED BY A CHORD OF 262.39 FEET, AT A BEARING OF N58°18'09"W, FOR AN ARC LENGTH OF 275.04 FEET; THENCE RUN N88°36'28"W FOR A DISTANCE OF 125.93 FEET, TO A POINT OF TANGENTIAL CIRCULAR CURVATURE; THENCE ALONG A CURVE TO THE LEFT, HAVING A RADIUS OF 100.00 FEET, THROUGH A CENTRAL ANGLE OF 69°20'20", AND BEING SUBTENDED BY A CHORD OF 113.77 FEET, AT A BEARING OF S56°43'22"W, FOR AN ARC LENGTH OF 121.02 FEET, TO A POINT OF TANGENTIAL REVERSE CURVATURE; THENCE ALONG A CURVE TO THE RIGHT, HAVING A RADIUS OF 200.00 FEET, THROUGH A CENTRAL ANGLE OF 48°41'47", AND BEING SUBTENDED BY A CHORD OF 164.91 FEET, AT A BEARING OF S46°24'06"W, FOR AN ARC LENGTH OF 169.98 FEET, TO A POINT OF TANGENTIAL COMPOUND CURVATURE; THENCE ALONG A CURVE TO THE RIGHT, HAVING A RADIUS OF 700.00 FEET, THROUGH A CENTRAL ANGLE OF 13°28'58", AND BEING SUBTENDED BY A CHORD OF 164.34 FEET, AT A BEARING OF S77°29'29"W, FOR AN ARC LENGTH OF 164.72 FEET; THENCE RUN S84°13'58"W FOR A DISTANCE OF 169.90 FEET, TO A POINT OF TANGENTIAL CIRCULAR CURVATURE; THENCE ALONG A CURVE TO THE LEFT, HAVING A RADIUS OF 250.00 FEET, THROUGH A CENTRAL ANGLE OF 34°43'19", AND BEING SUBTENDED BY A CHORD OF 149.20 FEET, AT A BEARING OF S66°52'18"W, FOR AN ARC LENGTH OF 151.50 FEET, TO A POINT OF TANGENTIAL REVERSE CURVATURE; THENCE ALONG A CURVE TO THE RIGHT, HAVING A RADIUS OF 475.00 FEET, THROUGH A CENTRAL ANGLE OF 62°08'00", AND BEING SUBTENDED BY A CHORD OF 490.23 FEET, AT A BEARING OF S80°34'39"W, FOR AN ARC LENGTH OF 515.11 FEET, TO A POINT OF TANGENTIAL REVERSE CURVATURE; THENCE ALONG A CURVE TO THE LEFT, HAVING A RADIUS OF 200.00 FEET, THROUGH A CENTRAL ANGLE OF 65°24'33", AND BEING SUBTENDED BY A CHORD OF 216.12 FEET, AT A BEARING OF S78°56'22"W, FOR AN ARC LENGTH OF 228.32 FEET, TO A POINT OF TANGENTIAL REVERSE CURVATURE; THENCE ALONG A CURVE TO THE RIGHT, HAVING A RADIUS OF 150.00 FEET, THROUGH A CENTRAL ANGLE OF 43°19'39", AND BEING SUBTENDED BY A CHORD OF 110.75 FEET, AT A BEARING OF S67°53'55"W, FOR AN ARC LENGTH OF 113.43 FEET; THENCE RUN S89°33'44"W FOR A DISTANCE OF 33.81 FEET; THENCE RUN N00°25'58"W FOR A DISTANCE OF 2674.12 FEET; THENCE RUN N26°57'22"W FOR A DISTANCE OF 100.00 FEET, TO A POINT OF NON-TANGENTIAL CIRCULAR CURVATURE; THENCE ALONG A CURVE TO THE RIGHT, HAVING A RADIUS OF 709.89 FEET, THROUGH A CENTRAL ANGLE OF 15°24'01", AND BEING SUBTENDED BY A CHORD OF 190.23 FEET, AT A BEARING OF S70°44'39"W, FOR AN ARC LENGTH OF 190.81 FEET, TO A POINT ON THE EAST LINE OF THE NORTHEAST QUARTER OF SECTION 14, TOWNSHIP 51 SOUTH, RANGE 26 EAST; THENCE ALONG SAID EAST LINE OF THE NORTHEAST QUARTER OF SECTION 14, RUN N00°25'37"W FOR A DISTANCE OF 495.65 FEET, TO THE SOUTHEAST CORNER OF THE NORTHEAST QUARTER OF THE NORTHEAST QUARTER OF SAID SECTION 14; THENCE ALONG THE SOUTH LINE OF THE NORTHEAST QUARTER OF THE NORTHEAST QUARTER OF SAID SECTION 14, RUN N88°20'43"W FOR A DISTANCE OF 693.91 FEET, TO THE SOUTHWEST CORNER OF THE EAST HALF OF THE NORTHEAST QUARTER OF THE NORTHEAST QUARTER OF SAID SECTION 14; THENCE LEAVING SAID SECTION LINE, RUN N52°51'27"W FOR A DISTANCE OF 171.83 FEET; THENCE RUN S37°08'33"W FOR A DISTANCE OF 122.51 FEET, TO A POINT ON THE SOUTH LINE OF THE NORTH QUARTER OF SAID SECTION 14; THENCE ALONG SAID SOUTH LINE OF THE NORTH QUARTER OF SAID SECTION 14, RUN N88°20'43"W FOR A DISTANCE OF 2557.48 FEET; THENCE ALONG THE WEST LINE OF THE EAST HALF OF THE NORTHEAST QUARTER OF THE NORTHWEST QUARTER OF SAID SECTION 14, RUN N00°02'07"E FOR A DISTANCE OF 1389.87 FEET; THENCE LEAVING SAID QUARTER LINE, RUN N88°05'43"W FOR A DISTANCE OF 590.35 FEET; THENCE RUN N01°43'02"E FOR A DISTANCE OF 1493.79 FEET; THENCE RUN S88°00'55"E FOR A DISTANCE OF 1274.00 FEET; THENCE RUN S88°09'46"E FOR A DISTANCE OF 1374.52 FEET; THENCE ALONG THE WEST LINE OF THE EAST HALF OF THE SOUTHEAST QUARTER OF SECTION 11 AND THE WEST LINE OF THE SOUTHEAST QUARTER OF THE NORTHEAST QUARTER OF SAID SECTION 11, TOWNSHIP 51 SOUTH, RANGE 26 EAST, RUN N01°13'54"E FOR A DISTANCE OF 1860.10 FEET; THENCE LEAVING SAID QUARTER LINE, RUN S88°46'12"E FOR A DISTANCE OF 518.33 FEET, TO A POINT OF NON-TANGENTIAL CIRCULAR CURVATURE; THENCE ALONG A CURVE TO THE RIGHT, HAVING A RADIUS OF 350.00 FEET, THROUGH A CENTRAL ANGLE OF 37°05'11", AND BEING SUBTENDED BY A CHORD OF 222.61 FEET, AT A BEARING OF N17°05'16"E, FOR AN ARC LENGTH OF 226.55 FEET; THENCE RUN N35°37'51"E FOR A DISTANCE OF 214.87 FEET, TO A POINT ON SAID SOUTHERLY RIGHT-OF-WAY LINE OF U.S. 41;

DRAWN BY: R.A.K.	DATE: 9/7/16
SHEET: 2	OF SHEET: 5
SIC-TNH-RGE: 11.13.14-51S-26E & 18-51S-27E	

HOM
HOLE MONTES
 URBANI PLANI SIMONIS

950 Enoore Way
 Naples, FL 34110
 Phone: (239) 254-2000
 Florida Certificate of
 Authorization No.1772

LEGAL DESCRIPTION COMMUNITY DEVELOPMENT DISTRICT 2	DRAWING NO. B-7366-2
	PROJECT NO. 1998070
	FILE NAME C001 SKD_Rev02.dwg



(CONTINUED FROM SHEET 2 OF 5)

THENCE ALONG SAID SOUTHERLY RIGHT-OF-WAY LINE, RUN S54°21'53"E FOR A DISTANCE OF 807.97 FEET, TO AN INTERSECTION WITH THE EAST LINE OF THE NORTHEAST QUARTER OF SAID SECTION 11; THENCE ALONG SAID QUARTER LINE, RUN S01°00'06"W FOR A DISTANCE OF 3308.61 FEET, TO THE POINT OF BEGINNING OF THE PARCEL HEREIN DESCRIBED; CONTAINING 1,070.640 ACRES.

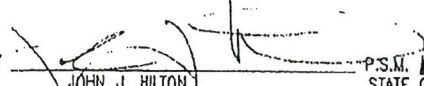
LESS AND EXCEPT:


A PARCEL OF LAND LOCATED IN A PORTION OF SECTION 14, TOWNSHIP 51 SOUTH, RANGE 26 EAST, COLLIER COUNTY, FLORIDA, BEING MORE PARTICULARLY DESCRIBED AS FOLLOWS:

THE NORTHEAST 1/4 OF THE NORTHEAST 1/4 OF THE NORTHEAST 1/4 OF SECTION 14, TOWNSHIP 51 SOUTH, RANGE 26 EAST, COLLIER COUNTY, FLORIDA, CONTAINING 10.906 ACRES, MORE OR LESS.

TOTAL DESCRIBED AREA = 1,059.734 ACRES.

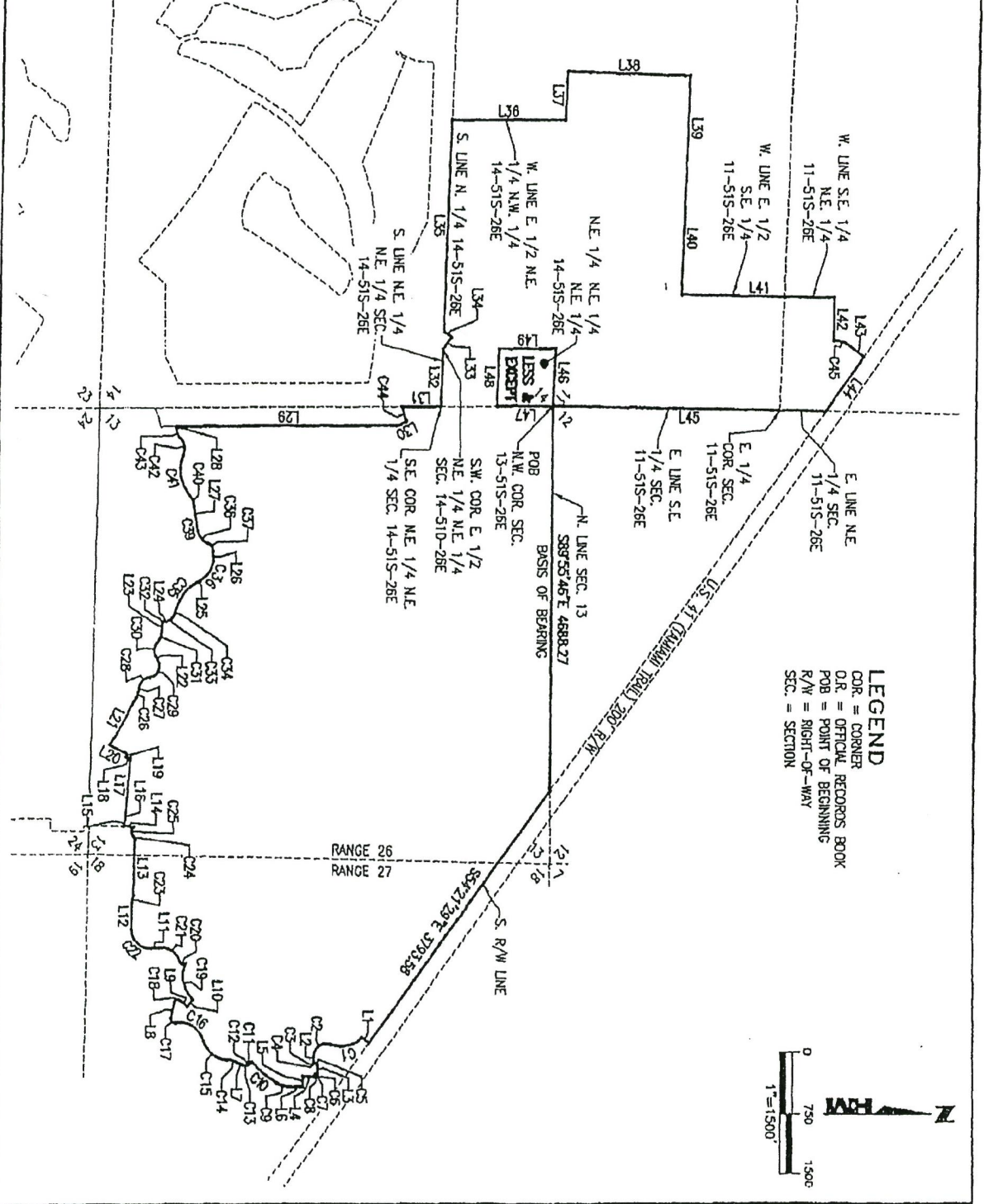
HOLE MONTES, INC.
 CERTIFICATE OF AUTHORIZATION NUMBER LB 1772

BY  P.S.M. 16278
 JOHN J. HILTON STATE OF FLORIDA

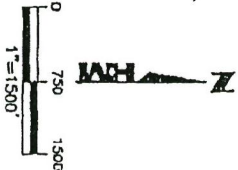
DRAWN BY: R.A.N.	DATE: 9/7/16	 HOLE MONTES LICENSED PLANNING SURVEYORS	950 Encore Way Naples, FL 34110 Phone: (239) 254-2000 Florida Certificate of Authorization No. 1772	LEGAL DESCRIPTION COMMUNITY DEVELOPMENT DISTRICT 2	DRAWING NO. B-7366-2
SHEET 3	OF SHEET 5				PROJECT NO. 1998070
SEC-TWP-RGE: 11,13,14-51S-26E & 18-51S-27E					



\\vm-k61\paula-sy2\2007\5-Survey\Projects By Name Of Location\1700LDS\189010X.C001.C002.R18\515\S18\2007\18-515-26E\18-515-26E.dwg 9/7/2016 3:44:01 PM Plotted by: RJK/Korall



LEGEND
 COR = CORNER
 O.R. = OFFICIAL RECORDS BOOK
 POB = POINT OF BEGINNING
 R/W = RIGHT-OF-WAY
 SEC. = SECTION



DRAWN BY: R.A.K.	DATE: 9/7/18
SHEET 4	OF SHEET 5
SEC-TW1-RGL 11,13,14-515-26E & 18-515-27E	

H.M.
HOLE MONTES
 EXPERT PLANNING SURVEYORS

950 Encore Way
 Naples, FL 34110
 Phone: (239) 254-2000
 Florida Certificate of
 Authorization No.1772

SKETCH OF LEGAL DESCRIPTION
 COMMUNITY DEVELOPMENT DISTRICT 2

DRAWING NO. B-7366-2
PROJECT NO. 1998070
FILE NAME C002 SKD_Rrv02.dwg

040C

\\hm-dca\181037-5218200\5-Survey\Project By Home Of Location\DWGERS\19980702 C001 C002 REVISED\DWG\19980702\002 Revision 01\C002 SWD_Ren01.dwg 9/7/2016 3:11:01 PM Plotted by: RickKerrell

CURVE TABLE					
CURVE	RADIUS	DELTA	CHORD	CHORD BEARING	ARC LENGTH
C1	350.00	66°22'03"	383.13	S12°43'35"E	405.42
C2	150.00	110°27'50"	248.44	S34°46'28"E	289.19
C3	20.00	52°30'17"	17.69	N83°44'28"E	18.33
C4	95.00	15°00'34"	24.82	N44°59'37"E	24.89
C5	20.00	52°30'17"	17.69	N26°14'45"E	18.33
C6	20.00	52°30'17"	17.69	S26°15'32"E	18.33
C7	85.00	15°00'34"	24.82	S45°00'23"E	24.89
C8	20.00	52°30'11"	17.69	S63°45'11"E	18.33
C9	320.00	29°39'13"	163.77	S14°49'13"W	165.82
C10	1180.00	18°38'36"	384.82	S38°57'08"W	386.52
C11	45.00	58°39'38"	44.77	S44°45'59"E	48.86
C12	82.88	18°38'25"	20.27	S24°15'23"E	20.36
C13	45.00	61°48'37"	46.20	S02°41'17"E	48.52
C14	300.00	28°33'18"	137.80	S14°55'24"W	139.04
C15	300.00	74°19'47"	362.47	S38°48'40"W	389.19
C16	300.00	85°58'55"	409.13	S32°59'06"W	450.20
C17	46.00	111°49'56"	74.64	S45°54'37"W	87.83
C18	45.00	116°41'28"	76.81	N18°49'41"W	81.65
C19	385.00	75°57'07"	449.19	S78°42'20"W	483.85
C20	45.00	107°40'34"	72.68	S16°58'44"W	84.57
C21	280.00	74°43'05"	315.54	S33°48'55"W	339.06
C22	225.00	94°37'47"	330.79	S43°44'16"W	371.61
C23	285.00	18°35'10"	92.05	N78°39'15"W	92.45

CURVE TABLE					
CURVE	RADIUS	DELTA	CHORD	CHORD BEARING	ARC LENGTH
C24	80.00	42°52'13"	58.47	S69°37'15"W	59.88
C25	81.20	94°11'25"	118.88	N84°43'04"W	133.49
C26	200.00	23°47'41"	82.46	N73°53'04"W	83.06
C27	300.00	18°27'34"	85.89	N77°33'08"W	86.18
C28	150.00	61°29'33"	163.37	N38°34'34"W	160.89
C29	137.00	112°55'12"	228.38	N64°17'24"W	270.00
C30	135.00	71°28'36"	157.70	N85°00'42"W	168.41
C31	260.00	38°03'08"	163.00	N88°17'59"W	168.04
C32	10.00	80°16'50"	12.89	N47°11'08"W	14.01
C33	100.00	54°47'04"	92.02	N34°26'15"W	95.62
C34	550.00	13°06'41"	125.58	N68°23'07"W	125.86
C35	600.00	46°56'38"	398.30	N51°28'09"W	409.66
C36	260.00	60°36'37"	262.39	N58°18'09"W	275.04
C37	100.00	69°20'20"	113.77	S58°43'22"W	121.02
C38	200.00	48°41'47"	164.81	S46°24'06"W	169.88
C39	700.00	13°28'58"	184.34	S77°29'29"W	184.72
C40	250.00	34°43'19"	149.20	S88°52'16"W	151.50
C41	475.00	82°08'00"	490.23	S80°34'39"W	515.11
C42	200.00	65°24'33"	218.12	S78°56'22"W	228.32
C43	150.00	43°19'38"	110.76	S67°53'55"W	113.43
C44	709.89	15°24'01"	190.23	S70°44'39"W	190.81
C45	350.00	37°05'11"	222.81	N17°05'16"E	228.55

LINE TABLE		
LINE	DIRECTION	LENGTH
L1	S35°39'17"W	107.40
L2	N89°59'37"E	58.44
L3	N89°59'37"E	100.00
L4	S00°00'23"E	130.00
L5	N89°59'37"E	113.79
L6	S00°00'23"E	150.36
L7	S28°12'02"W	70.46
L8	N78°10'25"W	194.68
L9	N38°31'03"E	111.08
L10	N51°28'57"W	105.27
L11	S03°34'37"E	87.88
L12	N88°56'50"W	322.37
L13	N88°56'39"W	664.33

LINE TABLE		
LINE	DIRECTION	LENGTH
L14	S04°47'07"W	128.86
L15	N77°46'12"W	78.84
L16	N88°51'53"W	85.84
L17	N84°45'39"W	685.72
L18	S05°42'49"W	86.04
L19	N84°17'11"W	48.52
L20	S28°00'46"W	219.00
L21	N61°59'14"W	667.71
L22	S59°15'00"W	58.82
L23	N87°19'33"W	86.72
L24	N07°02'43"W	40.73
L25	N27°59'51"W	47.49
L26	N88°36'28"W	125.83

LINE TABLE		
LINE	DIRECTION	LENGTH
L27	S84°13'58"W	169.90
L28	S88°33'44"W	33.81
L29	N00°25'58"W	2074.12
L30	N28°57'22"W	100.00
L31	N00°25'37"W	495.65
L32	N88°20'43"W	693.91
L33	N52°51'27"W	171.83
L34	S37°08'33"W	122.51
L35	N88°20'43"W	2557.48
L36	N00°02'07"E	1389.87
L37	N88°05'43"W	590.35
L38	N01°43'02"E	1403.79
L39	S88°09'55"E	1274.00

LINE TABLE		
LINE	DIRECTION	LENGTH
L40	S88°09'46"E	1374.52
L41	N01°13'54"E	1880.10
L42	S88°46'12"E	618.33
L43	N35°37'51"E	214.87
L44	S54°21'53"E	807.97
L45	S01°00'08"W	3308.81
L46	S88°05'23"E	690.28
L47	S00°26'31"E	687.45
L48	N88°13'02"W	691.38
L49	N00°20'41"W	688.94

DRAWN BY: R.A.K.
 SHEET 5 OF SHEET 5
 DATE: 9/7/16
 SEC-THH-RCC
 11,13,14-515-26E & 18-515-27E



850 Enoare Way
 Naples, FL 34110
 Phone: (239) 254-2000
 Florida Certificate of
 Authorization No.1772

LINE AND CURVE TABLES
 COMMUNITY DEVELOPMENT DISTRICT 2

DRAWING NO. B-7366-2
 PROJECT NO. 1998070
 FILE NAME C001 SWD_Ren01.dwg



Exhibit "B"

\\lan-s061\B\DATA-S\2002\S-Survey\Projects By Home Of Location\HOLEMONTES\19980702 0001 CO01 REVISED\SWETCHES\0002 Revision 04\0002 SKD_Rev02.dwg 3/7/2016 3:41:01 PU Plotted by: RckKonnell

LEGAL DESCRIPTION:

A PARCEL OF LAND LOCATED IN SECTIONS 11, 13 AND 14, TOWNSHIP 51 SOUTH, RANGE 26 EAST, AND SECTION 18, TOWNSHIP 51 SOUTH, RANGE 27 EAST, COLLIER COUNTY, FLORIDA AND BEING MORE PARTICULARLY DESCRIBED AS FOLLOWS:

BEGIN AT THE NORTHWEST CORNER OF SECTION 13, TOWNSHIP 51 SOUTH, RANGE 26 EAST, COLLIER COUNTY, FLORIDA; THENCE ALONG THE NORTH LINE OF SAID SECTION 13, RUN S89°55'46"E FOR A DISTANCE OF 4688.27 FEET, TO A POINT ON THE SOUTHERLY RIGHT-OF-WAY LINE OF U.S. 41 (TAMiami TRAIL), A 200' WIDE RIGHT-OF-WAY; THENCE ALONG SAID SOUTHERLY RIGHT-OF-WAY LINE, RUN S54°21'29"E FOR A DISTANCE OF 3793.58 FEET; THENCE LEAVING SAID SOUTHERLY RIGHT-OF-WAY LINE, RUN S35°39'17"W FOR A DISTANCE OF 107.40 FEET, TO A POINT OF NON-TANGENTIAL CIRCULAR CURVATURE; THENCE ALONG A CURVE TO THE RIGHT, HAVING A RADIUS OF 350.00 FEET, THROUGH A CENTRAL ANGLE OF 66°22'03", AND BEING SUBTENDED BY A CHORD OF 383.13 FEET, AT A BEARING OF S12°43'35"E, FOR AN ARC LENGTH OF 405.42 FEET, TO A POINT OF TANGENTIAL REVERSE CURVATURE; THENCE ALONG A CURVE TO THE LEFT, HAVING A RADIUS OF 150.00 FEET, THROUGH A CENTRAL ANGLE OF 110°27'50", AND BEING SUBTENDED BY A CHORD OF 246.44 FEET, AT A BEARING OF S34°46'28"E, FOR AN ARC LENGTH OF 289.19 FEET; THENCE RUN N89°59'37"E FOR A DISTANCE OF 58.44 FEET, TO A POINT OF TANGENTIAL CIRCULAR CURVATURE; THENCE ALONG A CURVE TO THE LEFT, HAVING A RADIUS OF 20.00 FEET, THROUGH A CENTRAL ANGLE OF 52°30'17", AND BEING SUBTENDED BY A CHORD OF 17.69 FEET, AT A BEARING OF N63°44'28"E, FOR AN ARC LENGTH OF 18.33 FEET, TO A POINT OF TANGENTIAL REVERSE CURVATURE; THENCE ALONG A CURVE TO THE RIGHT, HAVING A RADIUS OF 95.00 FEET, THROUGH A CENTRAL ANGLE OF 15°00'34", AND BEING SUBTENDED BY A CHORD OF 24.82 FEET, AT A BEARING OF N44°59'37"E, FOR AN ARC LENGTH OF 24.89 FEET, TO A POINT OF TANGENTIAL REVERSE CURVATURE; THENCE ALONG A CURVE TO THE LEFT, HAVING A RADIUS OF 20.00 FEET, THROUGH A CENTRAL ANGLE OF 52°30'17", AND BEING SUBTENDED BY A CHORD OF 17.69 FEET, AT A BEARING OF N26°14'45"E, FOR AN ARC LENGTH OF 18.33 FEET; THENCE RUN N89°59'37"E FOR A DISTANCE OF 100.00 FEET, TO A POINT OF NON-TANGENTIAL CIRCULAR CURVATURE; THENCE ALONG A CURVE TO THE LEFT, HAVING A RADIUS OF 20.00 FEET, THROUGH A CENTRAL ANGLE OF 52°30'17", AND BEING SUBTENDED BY A CHORD OF 17.69 FEET, AT A BEARING OF S26°15'32"E, FOR AN ARC LENGTH OF 18.33 FEET, TO A POINT OF TANGENTIAL REVERSE CURVATURE; THENCE ALONG A CURVE TO THE RIGHT, HAVING A RADIUS OF 95.00 FEET, THROUGH A CENTRAL ANGLE OF 15°00'34", AND BEING SUBTENDED BY A CHORD OF 24.82 FEET, AT A BEARING OF S45°00'23"E, FOR AN ARC LENGTH OF 24.89 FEET, TO A POINT OF TANGENTIAL REVERSE CURVATURE; THENCE ALONG A CURVE TO THE LEFT, HAVING A RADIUS OF 20.00 FEET, THROUGH A CENTRAL ANGLE OF 52°30'11", AND BEING SUBTENDED BY A CHORD OF 17.69 FEET, AT A BEARING OF S63°45'11"E, FOR AN ARC LENGTH OF 18.33 FEET; THENCE RUN S00°00'23"E FOR A DISTANCE OF 130.00 FEET; THENCE RUN N89°59'37"E FOR A DISTANCE OF 113.79 FEET; THENCE RUN S00°00'23"E FOR A DISTANCE OF 150.36 FEET, TO A POINT OF TANGENTIAL CIRCULAR CURVATURE; THENCE ALONG A CURVE TO THE RIGHT, HAVING A RADIUS OF 320.00 FEET, THROUGH A CENTRAL ANGLE OF 29°39'13", AND BEING SUBTENDED BY A CHORD OF 163.77 FEET, AT A BEARING OF S14°49'13"W, FOR AN ARC LENGTH OF 165.82 FEET, TO A POINT OF TANGENTIAL COMPOUND CURVATURE; THENCE ALONG A CURVE TO THE RIGHT, HAVING A RADIUS OF 1190.00 FEET, THROUGH A CENTRAL ANGLE OF 18°36'36", AND BEING SUBTENDED BY A CHORD OF 384.82 FEET, AT A BEARING OF S38°57'08"W, FOR AN ARC LENGTH OF 386.52 FEET, TO A POINT OF NON-TANGENTIAL COMPOUND CURVATURE; THENCE ALONG A CURVE TO THE RIGHT, HAVING A RADIUS OF 45.00 FEET, THROUGH A CENTRAL ANGLE OF 59°39'38", AND BEING SUBTENDED BY A CHORD OF 44.77 FEET, AT A BEARING OF S44°45'59"E, FOR AN ARC LENGTH OF 46.86 FEET, TO A POINT OF REVERSE CURVATURE; THENCE ALONG A CURVE TO THE LEFT, HAVING A RADIUS OF 62.58 FEET, THROUGH A CENTRAL ANGLE OF 18°38'25", AND BEING SUBTENDED BY A CHORD OF 20.27 FEET, AT A BEARING OF S24°15'23"E, FOR AN ARC LENGTH OF 20.36 FEET, TO A POINT OF REVERSE CURVATURE; THENCE ALONG A CURVE TO THE RIGHT, HAVING A RADIUS OF 45.00 FEET, THROUGH A CENTRAL ANGLE OF 61°46'37", AND BEING SUBTENDED BY A CHORD OF 46.20 FEET, AT A BEARING OF S02°41'17"E, FOR AN ARC LENGTH OF 48.52 FEET; THENCE RUN S28°12'02"W FOR A DISTANCE OF 70.46 FEET, TO A POINT OF TANGENTIAL CIRCULAR CURVATURE; THENCE ALONG A CURVE TO THE LEFT, HAVING A RADIUS OF 300.00 FEET, THROUGH A CENTRAL ANGLE OF 26°33'18", AND BEING SUBTENDED BY A CHORD OF 137.80 FEET, AT A BEARING OF S14°55'24"W, FOR AN ARC LENGTH OF 139.04 FEET, TO A POINT OF TANGENTIAL REVERSE CURVATURE; THENCE ALONG A CURVE TO THE RIGHT, HAVING A RADIUS OF 300.00 FEET, THROUGH A CENTRAL ANGLE OF 74°19'47", AND BEING SUBTENDED BY A CHORD OF 362.47 FEET, AT A BEARING OF S38°48'40"W, FOR AN ARC LENGTH OF 389.19 FEET, TO A POINT OF TANGENTIAL REVERSE CURVATURE; THENCE ALONG A CURVE TO THE LEFT, HAVING A RADIUS OF 300.00 FEET, THROUGH A CENTRAL ANGLE OF 85°58'55", AND BEING SUBTENDED BY A CHORD OF 409.13 FEET, AT A BEARING OF S32°59'06"W, FOR AN ARC LENGTH OF 450.20 FEET, TO A POINT OF TANGENTIAL REVERSE CURVATURE; THENCE ALONG A CURVE TO THE RIGHT, HAVING A RADIUS OF 45.00 FEET, THROUGH A CENTRAL ANGLE OF 111°49'56", AND BEING SUBTENDED BY A CHORD OF 74.54 FEET, AT A BEARING OF S45°54'37"W, FOR AN ARC LENGTH OF 87.83 FEET; THENCE RUN N78°10'25"W FOR A DISTANCE OF 194.68 FEET, TO A POINT OF TANGENTIAL CIRCULAR CURVATURE; THENCE ALONG A CURVE TO THE RIGHT, HAVING A RADIUS OF 45.00 FEET, THROUGH A CENTRAL ANGLE OF 116°41'28", AND BEING SUBTENDED BY A CHORD OF 76.81 FEET, AT A BEARING OF N19°49'41"W, FOR AN ARC LENGTH OF 91.65 FEET; THENCE RUN N38°31'03"E FOR A DISTANCE OF 111.08 FEET; THENCE RUN N51°28'57"W FOR A DISTANCE OF 105.27 FEET, TO A POINT OF NON-TANGENTIAL CIRCULAR CURVATURE; THENCE ALONG A CURVE TO THE RIGHT, HAVING A RADIUS OF 365.00 FEET, THROUGH A CENTRAL ANGLE OF 75°57'07", AND BEING SUBTENDED BY A CHORD OF 449.19 FEET, AT A BEARING OF S78°42'20"W, FOR AN ARC LENGTH OF 483.85 FEET, TO A POINT OF NON-TANGENTIAL COMPOUND CURVATURE; THENCE ALONG A CURVE TO THE RIGHT, HAVING A RADIUS OF 45.00 FEET, THROUGH A CENTRAL ANGLE OF 107°40'34", AND BEING SUBTENDED BY A CHORD OF 72.66 FEET, AT A BEARING OF S16°58'44"W, FOR AN ARC LENGTH OF 84.57 FEET, TO A POINT OF NON-TANGENTIAL COMPOUND CURVATURE; THENCE ALONG A CURVE TO THE LEFT, HAVING A RADIUS OF 260.00 FEET, THROUGH A CENTRAL ANGLE OF 74°43'05", AND BEING SUBTENDED BY A CHORD OF 315.54 FEET, AT A BEARING OF S33°46'55"W, FOR AN ARC LENGTH OF 339.06 FEET; THENCE RUN S03°34'37"E FOR A DISTANCE OF 87.88 FEET, TO A POINT OF TANGENTIAL CIRCULAR CURVATURE; THENCE ALONG A CURVE TO THE RIGHT, HAVING A RADIUS OF 225.00 FEET, THROUGH A CENTRAL ANGLE OF 94°37'47", AND BEING SUBTENDED BY A CHORD OF 330.79 FEET, AT A BEARING OF S43°44'16"W, FOR AN ARC LENGTH OF 371.61 FEET; THENCE RUN N88°56'50"W FOR A DISTANCE OF 322.37 FEET, TO A POINT OF TANGENTIAL CIRCULAR CURVATURE; THENCE ALONG A CURVE TO THE RIGHT, HAVING A RADIUS OF 285.00 FEET, THROUGH A CENTRAL ANGLE OF 18°35'10", AND BEING SUBTENDED BY A CHORD OF 92.05 FEET, AT A BEARING OF N79°39'15"W, FOR AN ARC LENGTH OF 92.45 FEET; THENCE RUN N88°56'39"W FOR A DISTANCE OF 664.33 FEET, TO A POINT OF TANGENTIAL CIRCULAR CURVATURE; THENCE ALONG A CURVE TO THE LEFT, HAVING A RADIUS OF 80.00 FEET, THROUGH A CENTRAL ANGLE OF 42°52'13", AND BEING SUBTENDED BY A CHORD OF 58.47 FEET, AT A BEARING OF S69°37'15"W, FOR AN ARC LENGTH OF 59.86 FEET, TO A POINT OF COMPOUND CURVATURE; THENCE ALONG A CURVE TO THE LEFT, HAVING A RADIUS OF 81.20 FEET, THROUGH A CENTRAL ANGLE OF 94°11'25", AND BEING SUBTENDED BY A CHORD OF 118.96 FEET, AT A BEARING OF N84°43'04"W, FOR AN ARC LENGTH OF 133.49 FEET;

DRAWN BY: R.A.K.	DATE: 8/7/16
SHEET # 1	OF SHEET 5
SEC-TWN-RGE: 11,13,14-51S-26E & 10-51S-27E	

H.M.
HOLE MONTES
ENGINEERS PLANNERS SURVEYORS

950 Encore Way
Naples, FL 34110
Phone: (239) 254-2000
Florida Certificate of
Authorization No.1772

LEGAL DESCRIPTION
COMMUNITY DEVELOPMENT DISTRICT 2

DRAWING NO. B-7366-2
PROJECT NO. 1998070
FILE NAME C001 SKD_Rev02.dwg



(CONTINUED FROM SHEET 1 OF 5)

THENCE RUN S04°47'07"W FOR A DISTANCE OF 126.86 FEET; THENCE RUN N77°46'12"W FOR A DISTANCE OF 78.84 FEET; THENCE RUN N88°51'53"W FOR A DISTANCE OF 65.94 FEET; THENCE RUN N84°45'39"W FOR A DISTANCE OF 685.72 FEET; THENCE RUN S05°42'49"W FOR A DISTANCE OF 68.04 FEET; THENCE RUN N84°17'11"W FOR A DISTANCE OF 48.52 FEET; THENCE RUN S28°00'46"W FOR A DISTANCE OF 219.00 FEET; THENCE RUN N61°59'14"W FOR A DISTANCE OF 667.71 FEET, TO A POINT OF TANGENTIAL CIRCULAR CURVATURE; THENCE ALONG A CURVE TO THE LEFT, HAVING A RADIUS OF 200.00 FEET, THROUGH A CENTRAL ANGLE OF 23°47'41", AND BEING SUBTENDED BY A CHORD OF 82.46 FEET, AT A BEARING OF N73°53'04"W, FOR AN ARC LENGTH OF 83.06 FEET, TO A POINT OF TANGENTIAL REVERSE CURVATURE; THENCE ALONG A CURVE TO THE RIGHT, HAVING A RADIUS OF 300.00 FEET, THROUGH A CENTRAL ANGLE OF 16°27'34", AND BEING SUBTENDED BY A CHORD OF 85.89 FEET, AT A BEARING OF N77°33'08"W, FOR AN ARC LENGTH OF 86.18 FEET, TO A POINT OF TANGENTIAL COMPOUND CURVATURE; THENCE ALONG A CURVE TO THE RIGHT, HAVING A RADIUS OF 150.00 FEET, THROUGH A CENTRAL ANGLE OF 61°29'33", AND BEING SUBTENDED BY A CHORD OF 153.37 FEET, AT A BEARING OF N38°34'34"W, FOR AN ARC LENGTH OF 160.99 FEET, TO A POINT OF TANGENTIAL REVERSE CURVATURE; THENCE ALONG A CURVE TO THE LEFT, HAVING A RADIUS OF 137.00 FEET, THROUGH A CENTRAL ANGLE OF 112°55'12", AND BEING SUBTENDED BY A CHORD OF 228.38 FEET, AT A BEARING OF N84°17'24"W, FOR AN ARC LENGTH OF 270.00 FEET; THENCE RUN S59°15'00"W FOR A DISTANCE OF 59.92 FEET, TO A POINT OF TANGENTIAL CIRCULAR CURVATURE; THENCE ALONG A CURVE TO THE RIGHT, HAVING A RADIUS OF 135.00 FEET, THROUGH A CENTRAL ANGLE OF 71°28'36", AND BEING SUBTENDED BY A CHORD OF 157.70 FEET, AT A BEARING OF N85°00'42"W, FOR AN ARC LENGTH OF 168.41 FEET, TO A POINT OF TANGENTIAL REVERSE CURVATURE; THENCE ALONG A CURVE TO THE LEFT, HAVING A RADIUS OF 250.00 FEET, THROUGH A CENTRAL ANGLE OF 38°03'09", AND BEING SUBTENDED BY A CHORD OF 163.00 FEET, AT A BEARING OF N68°17'59"W, FOR AN ARC LENGTH OF 166.04 FEET; THENCE RUN N87°19'33"W FOR A DISTANCE OF 86.72 FEET, TO A POINT OF TANGENTIAL CIRCULAR CURVATURE; THENCE ALONG A CURVE TO THE RIGHT, HAVING A RADIUS OF 10.00 FEET, THROUGH A CENTRAL ANGLE OF 80°16'50", AND BEING SUBTENDED BY A CHORD OF 12.89 FEET, AT A BEARING OF N47°11'08"W, FOR AN ARC LENGTH OF 14.01 FEET; THENCE RUN N07°02'43"W FOR A DISTANCE OF 40.73 FEET, TO A POINT OF TANGENTIAL CIRCULAR CURVATURE; THENCE ALONG A CURVE TO THE LEFT, HAVING A RADIUS OF 100.00 FEET, THROUGH A CENTRAL ANGLE OF 54°47'04", AND BEING SUBTENDED BY A CHORD OF 82.02 FEET, AT A BEARING OF N34°26'15"W, FOR AN ARC LENGTH OF 95.82 FEET, TO A POINT OF TANGENTIAL COMPOUND CURVATURE; THENCE ALONG A CURVE TO THE LEFT, HAVING A RADIUS OF 550.00 FEET, THROUGH A CENTRAL ANGLE OF 13°06'41", AND BEING SUBTENDED BY A CHORD OF 125.58 FEET, AT A BEARING OF N68°23'07"W, FOR AN ARC LENGTH OF 125.06 FEET, TO A POINT OF TANGENTIAL REVERSE CURVATURE; THENCE ALONG A CURVE TO THE RIGHT, HAVING A RADIUS OF 500.00 FEET, THROUGH A CENTRAL ANGLE OF 46°56'38", AND BEING SUBTENDED BY A CHORD OF 398.30 FEET, AT A BEARING OF N51°28'09"W, FOR AN ARC LENGTH OF 409.66 FEET; THENCE RUN N27°59'51"W FOR A DISTANCE OF 47.49 FEET, TO A POINT OF TANGENTIAL CIRCULAR CURVATURE; THENCE ALONG A CURVE TO THE LEFT, HAVING A RADIUS OF 260.00 FEET, THROUGH A CENTRAL ANGLE OF 60°36'37", AND BEING SUBTENDED BY A CHORD OF 262.39 FEET, AT A BEARING OF N58°18'09"W, FOR AN ARC LENGTH OF 275.04 FEET; THENCE RUN N88°36'28"W FOR A DISTANCE OF 125.93 FEET, TO A POINT OF TANGENTIAL CIRCULAR CURVATURE; THENCE ALONG A CURVE TO THE LEFT, HAVING A RADIUS OF 100.00 FEET, THROUGH A CENTRAL ANGLE OF 69°20'20", AND BEING SUBTENDED BY A CHORD OF 113.77 FEET, AT A BEARING OF S56°43'22"W, FOR AN ARC LENGTH OF 121.02 FEET, TO A POINT OF TANGENTIAL REVERSE CURVATURE; THENCE ALONG A CURVE TO THE RIGHT, HAVING A RADIUS OF 200.00 FEET, THROUGH A CENTRAL ANGLE OF 48°41'47", AND BEING SUBTENDED BY A CHORD OF 164.91 FEET, AT A BEARING OF S46°24'06"W, FOR AN ARC LENGTH OF 169.98 FEET, TO A POINT OF TANGENTIAL COMPOUND CURVATURE; THENCE ALONG A CURVE TO THE RIGHT, HAVING A RADIUS OF 700.00 FEET, THROUGH A CENTRAL ANGLE OF 13°28'58", AND BEING SUBTENDED BY A CHORD OF 164.34 FEET, AT A BEARING OF S77°29'29"W, FOR AN ARC LENGTH OF 164.72 FEET; THENCE RUN S84°13'58"W FOR A DISTANCE OF 169.90 FEET, TO A POINT OF TANGENTIAL CIRCULAR CURVATURE; THENCE ALONG A CURVE TO THE LEFT, HAVING A RADIUS OF 250.00 FEET, THROUGH A CENTRAL ANGLE OF 34°43'19", AND BEING SUBTENDED BY A CHORD OF 149.20 FEET, AT A BEARING OF S66°52'18"W, FOR AN ARC LENGTH OF 151.50 FEET, TO A POINT OF TANGENTIAL REVERSE CURVATURE; THENCE ALONG A CURVE TO THE RIGHT, HAVING A RADIUS OF 475.00 FEET, THROUGH A CENTRAL ANGLE OF 62°08'00", AND BEING SUBTENDED BY A CHORD OF 490.23 FEET, AT A BEARING OF S80°34'39"W, FOR AN ARC LENGTH OF 515.11 FEET, TO A POINT OF TANGENTIAL REVERSE CURVATURE; THENCE ALONG A CURVE TO THE LEFT, HAVING A RADIUS OF 200.00 FEET, THROUGH A CENTRAL ANGLE OF 65°24'33", AND BEING SUBTENDED BY A CHORD OF 216.12 FEET, AT A BEARING OF S78°56'22"W, FOR AN ARC LENGTH OF 228.32 FEET, TO A POINT OF TANGENTIAL REVERSE CURVATURE; THENCE ALONG A CURVE TO THE RIGHT, HAVING A RADIUS OF 150.00 FEET, THROUGH A CENTRAL ANGLE OF 43°19'39", AND BEING SUBTENDED BY A CHORD OF 110.75 FEET, AT A BEARING OF S67°53'55"W, FOR AN ARC LENGTH OF 113.43 FEET; THENCE RUN S89°33'44"W FOR A DISTANCE OF 33.81 FEET; THENCE RUN N00°25'58"W FOR A DISTANCE OF 2674.12 FEET; THENCE RUN N26°57'22"W FOR A DISTANCE OF 100.00 FEET, TO A POINT OF NON-TANGENTIAL CIRCULAR CURVATURE; THENCE ALONG A CURVE TO THE RIGHT, HAVING A RADIUS OF 709.89 FEET, THROUGH A CENTRAL ANGLE OF 15°24'01", AND BEING SUBTENDED BY A CHORD OF 190.23 FEET, AT A BEARING OF S70°44'39"W, FOR AN ARC LENGTH OF 190.81 FEET, TO A POINT ON THE EAST LINE OF THE NORTHEAST QUARTER OF SECTION 14, TOWNSHIP 51 SOUTH, RANGE 26 EAST; THENCE ALONG SAID EAST LINE OF THE NORTHEAST QUARTER OF SECTION 14, RUN N00°25'37"W FOR A DISTANCE OF 495.65 FEET, TO THE SOUTHEAST CORNER OF THE NORTHEAST QUARTER OF THE NORTHEAST QUARTER OF SAID SECTION 14; THENCE ALONG THE SOUTH LINE OF THE NORTHEAST QUARTER OF THE NORTHEAST QUARTER OF SAID SECTION 14, RUN N88°20'43"W FOR A DISTANCE OF 693.91 FEET, TO THE SOUTHWEST CORNER OF THE EAST HALF OF THE NORTHEAST QUARTER OF THE NORTHEAST QUARTER OF SAID SECTION 14; THENCE LEAVING SAID SECTION LINE, RUN N52°51'27"W FOR A DISTANCE OF 171.83 FEET; THENCE RUN S37°08'33"W FOR A DISTANCE OF 122.51 FEET, TO A POINT ON THE SOUTH LINE OF THE NORTH QUARTER OF SAID SECTION 14; THENCE ALONG SAID SOUTH LINE OF THE NORTH QUARTER OF SAID SECTION 14, RUN N88°20'43"W FOR A DISTANCE OF 2557.48 FEET; THENCE ALONG THE WEST LINE OF THE EAST HALF OF THE NORTHEAST QUARTER OF THE NORTHWEST QUARTER OF SAID SECTION 14, RUN N00°02'07"E FOR A DISTANCE OF 1389.87 FEET; THENCE LEAVING SAID QUARTER LINE, RUN N88°05'43"W FOR A DISTANCE OF 590.35 FEET; THENCE RUN N01°43'02"E FOR A DISTANCE OF 1483.79 FEET; THENCE RUN S88°09'55"E FOR A DISTANCE OF 1274.00 FEET; THENCE RUN S88°09'46"E FOR A DISTANCE OF 1374.52 FEET; THENCE ALONG THE WEST LINE OF THE EAST HALF OF THE SOUTHEAST QUARTER OF SECTION 11 AND THE WEST LINE OF THE SOUTHEAST QUARTER OF THE NORTHEAST QUARTER OF SAID SECTION 11, TOWNSHIP 51 SOUTH, RANGE 26 EAST, RUN N01°13'54"E FOR A DISTANCE OF 1860.10 FEET; THENCE LEAVING SAID QUARTER LINE, RUN S88°46'12"E FOR A DISTANCE OF 518.33 FEET, TO A POINT OF NON-TANGENTIAL CIRCULAR CURVATURE; THENCE ALONG A CURVE TO THE RIGHT, HAVING A RADIUS OF 350.00 FEET, THROUGH A CENTRAL ANGLE OF 37°05'11", AND BEING SUBTENDED BY A CHORD OF 222.61 FEET, AT A BEARING OF N17°05'18"E, FOR AN ARC LENGTH OF 226.55 FEET; THENCE RUN N35°37'51"E FOR A DISTANCE OF 214.87 FEET, TO A POINT ON SAID SOUTHERLY RIGHT-OF-WAY LINE OF U.S. 41;

DRAWN BY: R.A.K.	DATE: 9/7/16
SHEET 2	OF SHEET 5
SEC-TWY-RGE: 11,13,14-51S-26E & 18-51S-27E	

HM
HOLE MONTES
SURVEYING PLANNING & ENGINEERING

950 Encore Way
Naples, FL 34110
Phone: (239) 254-2000
Florida Certificate of
Authorization No. 1772

LEGAL DESCRIPTION
COMMUNITY DEVELOPMENT DISTRICT 2

DRAWING NO. B-7386-2
PROJECT NO. 1898070
FILE NAME C001 SKD_Rn02.dwg



(CONTINUED FROM SHEET 2 OF 5)

THENCE ALONG SAID SOUTHERLY RIGHT-OF-WAY LINE, RUN S54°21'53"E FOR A DISTANCE OF 807.97 FEET, TO AN INTERSECTION WITH THE EAST LINE OF THE NORTHEAST QUARTER OF SAID SECTION 11; THENCE ALONG SAID QUARTER LINE, RUN S01°00'06"W FOR A DISTANCE OF 3308.61 FEET, TO THE POINT OF BEGINNING OF THE PARCEL HEREIN DESCRIBED; CONTAINING 1,070.640 ACRES.

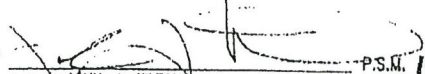
LESS AND EXCEPT:

A PARCEL OF LAND LOCATED IN A PORTION OF SECTION 14, TOWNSHIP 51 SOUTH, RANGE 26 EAST, COLLIER COUNTY, FLORIDA, BEING MORE PARTICULARLY DESCRIBED AS FOLLOWS:

THE NORTHEAST 1/4 OF THE NORTHEAST 1/4 OF THE NORTHEAST 1/4 OF SECTION 14, TOWNSHIP 51 SOUTH, RANGE 26 EAST, COLLIER COUNTY, FLORIDA, CONTAINING 10.906 ACRES, MORE OR LESS.

TOTAL DESCRIBED AREA = 1,059.734 ACRES.

HOLE MONTES, INC.
CERTIFICATE OF AUTHORIZATION NUMBER LB 1772

BY  JOHN J. HILTON
P.S.M. 16278
STATE OF FLORIDA

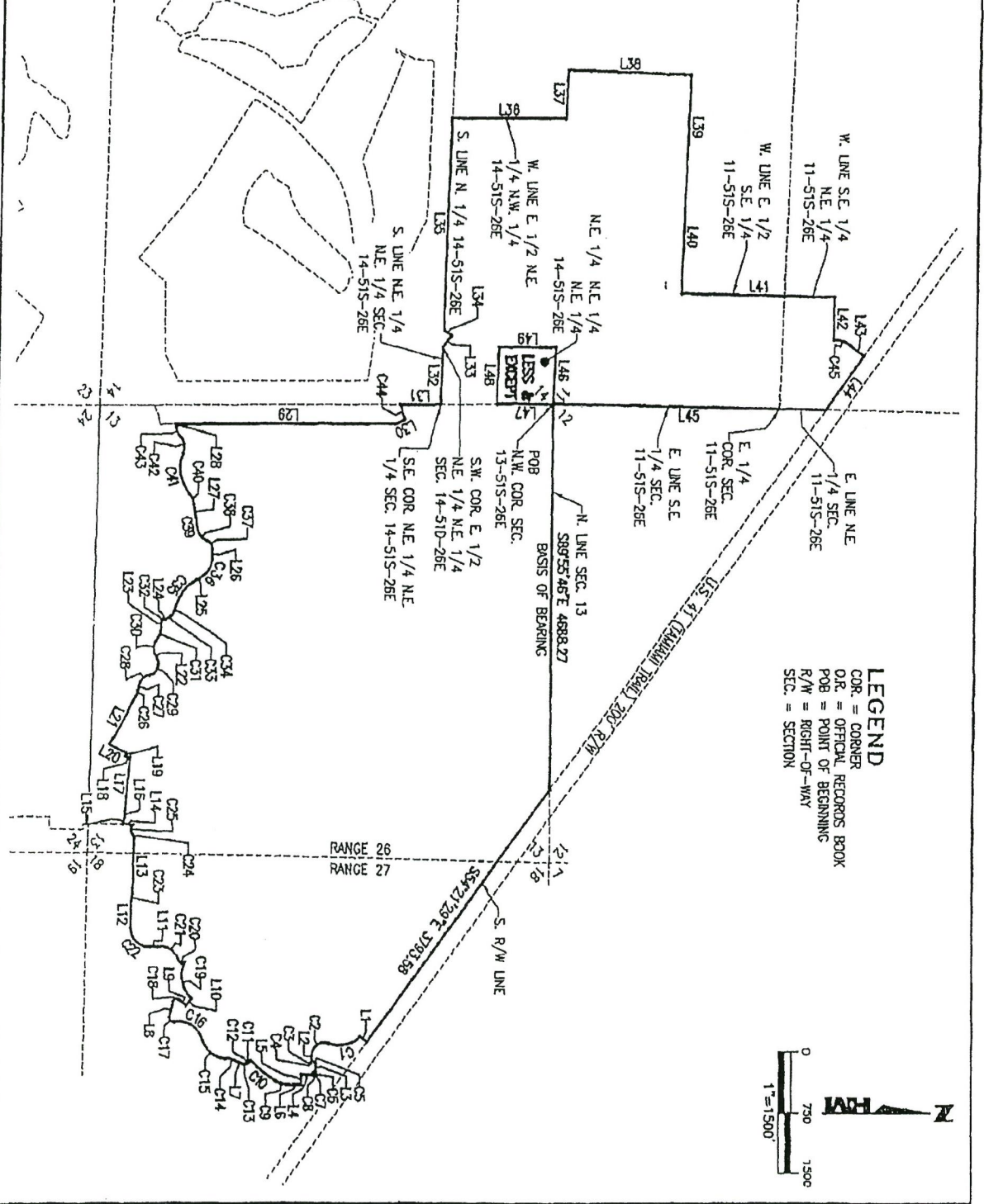
DRAWING NO. B-7366-2	PROJECT NO. 1998070	FILE NAME CD02 SKD_Rev01.dwg
DRAWING NO. B-7366-2	PROJECT NO. 1998070	FILE NAME CD02 SKD_Rev01.dwg
DRAWING NO. B-7366-2	PROJECT NO. 1998070	FILE NAME CD02 SKD_Rev01.dwg



HOLE MONTES
 LICENSED SURVEYORS
 950 Encore Way
 Naples, FL 34110
 Phone: (239) 254-2000
 Florida Certificate of
 Authorization No. 1772

LEGAL DESCRIPTION
COMMUNITY DEVELOPMENT DISTRICT 2





LEGEND
 COR. = CORNER
 O.R. = OFFICIAL RECORDS BOOK
 POB = POINT OF BEGINNING
 R/W = RIGHT-OF-WAY
 SEC. = SECTION



DRAWN BY: R.A.K.	DATE: 9/7/16
SHEET 4	OF SHEET 5
SEC-TWN-RGE: 11,13,14-51S-28E & 18-51S-27E	

H.M.
HOLE MONTES
 ENGINEERS PLANNERS SURVEYORS

950 Encore Way
 Naples, FL, 34110
 Phone: (239) 254-2000
 Florida Certificate of
 Authorization No. 1772

SKETCH OF LEGAL DESCRIPTION
 COMMUNITY DEVELOPMENT DISTRICT 2

DRAWING NO. B-7366-2
PROJECT NO. 1898070
FILE NAME C002 SKD_Rrv02.dwg

CAO

\\hnm-cad\181007-512\181007-512.dwg\Project By Home Of Lovell\DESIGN\181007-512\001 REVISED\DWG\181007-512\Revision of\001 STD_Rev01.dwg 9/7/2016 3:11:01 PM Plotted by RAKEMWII

CURVE TABLE					
CURVE	RADIUS	DELTA	CHORD	CHORD BEARING	ARC LENGTH
C1	350.00	66°22'03"	383.13	S12°43'35"E	405.42
C2	150.00	110°27'50"	246.44	S34°46'28"E	289.19
C3	20.00	52°30'17"	17.69	N63°44'28"E	18.33
C4	95.00	16°00'34"	24.82	N44°59'37"E	24.69
C5	20.00	52°30'17"	17.69	N26°14'45"E	18.33
C6	20.00	52°30'17"	17.69	S26°15'32"E	18.33
C7	85.00	15°00'34"	24.82	S45°00'23"E	24.89
C8	20.00	52°30'11"	17.69	S63°45'11"E	18.33
C9	320.00	29°39'13"	163.77	S14°49'13"W	165.82
C10	1180.00	18°38'36"	384.82	S38°57'08"W	386.52
C11	45.00	58°39'38"	44.77	S44°45'59"E	46.88
C12	82.58	18°38'25"	20.27	S24°15'23"E	20.36
C13	45.00	61°48'37"	46.20	S02°41'17"E	48.52
C14	300.00	28°33'16"	137.80	S14°55'24"W	139.04
C15	300.00	74°19'47"	362.47	S38°48'40"W	389.19
C16	300.00	85°58'55"	409.13	S32°59'06"W	450.20
C17	45.00	111°49'58"	74.54	S45°54'37"W	87.83
C18	45.00	118°41'28"	76.81	N19°49'41"W	91.65
C19	365.00	75°57'07"	449.19	S78°42'20"W	483.85
C20	45.00	107°40'34"	72.86	S16°58'44"W	84.57
C21	280.00	74°43'05"	315.54	S33°48'55"W	339.08
C22	225.00	84°37'47"	330.79	S43°44'16"W	371.61
C23	285.00	18°35'10"	92.05	N78°39'16"W	92.45

CURVE TABLE					
CURVE	RADIUS	DELTA	CHORD	CHORD BEARING	ARC LENGTH
C24	80.00	42°52'13"	58.47	S69°37'15"W	59.88
C25	81.20	84°11'25"	118.96	N84°43'04"W	133.49
C26	200.00	23°47'41"	82.46	N73°53'04"W	83.06
C27	300.00	16°27'34"	85.89	N77°33'08"W	86.18
C28	150.00	61°29'33"	153.37	N38°34'34"W	160.89
C29	137.00	112°55'12"	228.38	N64°17'24"W	270.00
C30	135.00	71°28'36"	157.70	N85°00'42"W	168.41
C31	260.00	38°03'09"	163.00	N68°17'59"W	166.04
C32	10.00	80°16'50"	12.89	N47°11'08"W	14.01
C33	100.00	64°47'04"	92.02	N34°26'15"W	95.82
C34	650.00	13°06'41"	125.58	N68°23'07"W	125.86
C35	600.00	46°58'38"	398.30	N51°28'09"W	408.66
C36	260.00	60°36'37"	282.39	N68°18'09"W	275.04
C37	100.00	69°20'20"	113.77	S56°43'22"W	121.02
C38	200.00	48°41'47"	164.91	S46°24'06"W	169.88
C39	700.00	13°28'58"	184.34	S77°29'29"W	184.72
C40	250.00	34°43'19"	149.20	S86°52'18"W	151.50
C41	475.00	82°08'00"	490.23	S80°34'39"W	515.11
C42	200.00	65°24'33"	216.12	S78°56'22"W	220.32
C43	150.00	43°19'39"	110.76	S67°53'55"W	113.43
C44	709.89	15°24'01"	190.23	S70°44'39"W	190.81
C45	350.00	37°05'11"	222.61	N17°05'16"E	228.55

LINE TABLE		
LINE	DIRECTION	LENGTH
L1	S35°39'17"W	107.40
L2	N89°59'37"E	58.44
L3	N89°59'37"E	100.00
L4	S00°00'23"E	130.00
L5	N89°59'37"E	113.79
L6	S00°00'23"E	150.38
L7	S28°12'02"W	70.46
L8	N78°10'25"W	194.88
L9	N38°31'03"E	111.08
L10	N51°28'57"W	105.27
L11	S03°34'37"E	87.88
L12	N88°56'50"W	322.37
L13	N88°56'39"W	664.33

LINE TABLE		
LINE	DIRECTION	LENGTH
L14	S04°47'07"W	126.86
L15	N77°46'12"W	78.84
L16	N88°51'53"W	85.94
L17	N84°45'39"W	685.72
L18	S05°42'49"W	66.04
L19	N84°17'11"W	48.52
L20	S28°00'46"W	219.00
L21	N81°59'14"W	687.71
L22	S59°15'00"W	59.82
L23	N87°19'33"W	86.72
L24	N07°02'43"W	40.73
L25	N27°59'51"W	47.49
L26	N88°36'28"W	126.93

LINE TABLE		
LINE	DIRECTION	LENGTH
L27	S84°13'58"W	169.90
L28	S89°33'44"W	33.81
L29	N00°25'58"W	2874.12
L30	N26°57'22"W	100.00
L31	N00°26'37"W	495.65
L32	N88°20'43"W	693.91
L33	N52°51'27"W	171.83
L34	S37°08'33"W	122.51
L35	N88°20'43"W	2557.48
L36	N00°02'07"E	1389.87
L37	N88°05'43"W	590.35
L38	N01°43'02"E	1493.79
L39	S88°09'55"E	1274.00

LINE TABLE		
LINE	DIRECTION	LENGTH
L40	S88°09'46"E	1374.62
L41	N01°13'54"E	1860.10
L42	S88°46'12"E	518.33
L43	N35°37'51"E	214.87
L44	S54°21'53"E	807.97
L45	S01°00'06"W	3308.61
L46	S88°05'23"E	690.28
L47	S00°28'31"E	687.45
L48	N88°13'02"W	691.39
L49	N00°20'41"W	688.94

DRAWN BY: R.A.K.
 DATE: 9/7/18
 SHEET 5 OF SHEET 6
 SEC-TW-RCG
 11,13,14-515-26E & 18-515-27E

HVM
 HOLE MONTES
 EXCELLENT PLANNERS SURVEYORS
 950 Encore Way
 Naples, FL 34110
 Phone: (239) 254-2000
 Florida Certificate of
 Authorization No.1772

LINE AND CURVE TABLES
 COMMUNITY DEVELOPMENT DISTRICT 2

DRAWING NO. B-7366-2
 PROJECT NO. 1988070
 FILE NAME C002_SKO_Rev01.dwg



ALL LESS AND EXCEPT THE FOLLOWING DESCRIBED
PARCEL OF LAND

10/2

RHODES & RHODES LAND SURVEYING, INC.

28100 BONITA GRANDE DRIVE SUITE 107
BONITA SPRINGS, FLORIDA 34135
PHONE (813) 405-8168 FAX (813) 408-8163

LEGAL DESCRIPTION

A PARCEL OF LAND LOCATED IN SECTION 13, TOWNSHIP 51 SOUTH, RANGE 26 EAST AND SECTIONS 18 AND 19, TOWNSHIP 51 SOUTH, RANGE 27 EAST, COLLIER COUNTY, FLORIDA, BEING MORE PARTICULARLY DESCRIBED AS FOLLOWS:

COMMENCE AT THE WEST QUARTER CORNER OF SECTION 18, TOWNSHIP 51 SOUTH, RANGE 27 EAST, COLLIER COUNTY, FLORIDA; THENCE RUN ALONG THE WEST LINE OF SOUTHWEST QUARTER OF SAID SECTION 18, SOUTH $00^{\circ}20'46''$ WEST, A DISTANCE OF 2,233.65 FEET TO THE POINT OF BEGINNING OF THE PARCEL OF LAND HEREIN DESCRIBED; THENCE NORTH $88^{\circ}56'16''$ WEST, A DISTANCE OF 161.44 FEET TO A POINT OF CURVATURE; THENCE WESTERLY, 59.86 FEET ALONG THE ARC OF A CIRCULAR CURVE, CONCAVE SOUTHERLY, HAVING A RADIUS OF 80.00 FEET, THROUGH A CENTRAL ANGLE OF $42^{\circ}52'13''$ AND BEING SUBTENDED BY A CHORD THAT BEARS SOUTH $69^{\circ}37'38''$ WEST, 58.47 FEET TO A POINT OF REVERSE CURVATURE; THENCE WESTERLY, 133.49 FEET ALONG THE ARC OF A CIRCULAR CURVE, CONCAVE NORTHERLY, HAVING A RADIUS OF 81.20 FEET, THROUGH A CENTRAL ANGLE OF $94^{\circ}11'25''$ AND BEING SUBTENDED BY A CHORD THAT BEARS NORTH $84^{\circ}42'41''$ WEST, 118.96 FEET; THENCE SOUTH $04^{\circ}47'30''$ WEST, A DISTANCE OF 125.63 FEET; THENCE NORTH $84^{\circ}46'05''$ WEST, A DISTANCE OF 9.99 FEET; THENCE NORTH $77^{\circ}45'48''$ WEST, A DISTANCE OF 68.76 FEET; THENCE NORTH $88^{\circ}51'30''$ WEST, A DISTANCE OF 65.94 FEET; THENCE NORTH $84^{\circ}45'16''$ WEST, A DISTANCE OF 595.29 FEET; THENCE NORTH $08^{\circ}46'55''$ EAST, A DISTANCE OF 15.19 FEET; THENCE NORTH $81^{\circ}13'05''$ WEST, A DISTANCE OF 86.83 FEET TO A POINT OF CURVATURE; THENCE SOUTHWESTERLY, 40.61 FEET ALONG THE ARC OF A CIRCULAR CURVE, CONCAVE SOUTHEASTERLY, HAVING A RADIUS OF 25.00 FEET, THROUGH A CENTRAL ANGLE OF $93^{\circ}04'05''$ AND BEING SUBTENDED BY A CHORD THAT BEARS SOUTH $52^{\circ}14'52''$ WEST, 36.29 FEET; THENCE SOUTH $05^{\circ}42'49''$ WEST, A DISTANCE OF 16.93 FEET TO A POINT OF CURVATURE; THENCE SOUTHWESTERLY, 49.00 FEET ALONG THE ARC OF A CIRCULAR CURVE, CONCAVE NORTHWESTERLY, HAVING A RADIUS OF 25.00 FEET, THROUGH A CENTRAL ANGLE OF $112^{\circ}17'57''$ AND BEING SUBTENDED BY A CHORD THAT BEARS SOUTH $61^{\circ}51'48''$ WEST, 41.52 FEET; THENCE NORTH $61^{\circ}59'14''$ WEST, A DISTANCE OF 75.11 FEET TO A POINT OF CURVATURE; THENCE NORTHERLY, 42.43 FEET ALONG THE ARC OF A CIRCULAR CURVE, CONCAVE EASTERLY, HAVING A RADIUS OF 30.00 FEET, THROUGH A CENTRAL ANGLE OF $81^{\circ}02'25''$ AND BEING SUBTENDED BY A CHORD THAT BEARS NORTH $21^{\circ}28'01''$ WEST, 38.98 FEET TO A POINT OF REVERSE CURVATURE; THENCE NORTHWESTERLY, 213.13 FEET ALONG THE ARC OF A CIRCULAR CURVE, CONCAVE SOUTHWESTERLY, HAVING A RADIUS OF 90.00 FEET, THROUGH A CENTRAL ANGLE OF $135^{\circ}41'08''$ AND BEING SUBTENDED BY A CHORD THAT BEARS NORTH $48^{\circ}47'22''$ WEST, 166.71 FEET TO A POINT OF REVERSE CURVATURE; THENCE WESTERLY, 61.99 FEET ALONG THE ARC OF A CIRCULAR CURVE, CONCAVE NORTHERLY, HAVING A RADIUS OF 65.00 FEET, THROUGH A CENTRAL ANGLE OF $54^{\circ}38'43''$ AND BEING SUBTENDED BY A CHORD THAT BEARS NORTH $89^{\circ}18'35''$ WEST, 59.67 FEET; THENCE NORTH $61^{\circ}59'14''$ WEST, A DISTANCE OF 36.90 FEET; THENCE NORTH $21^{\circ}37'59''$ EAST, A DISTANCE OF 250.74 FEET TO A POINT OF CURVATURE; THENCE NORTHERLY, 121.17 FEET ALONG THE ARC OF A CIRCULAR CURVE, CONCAVE WESTERLY, HAVING A RADIUS OF 230.00 FEET, THROUGH A CENTRAL ANGLE OF $30^{\circ}11'06''$ AND BEING SUBTENDED BY A CHORD THAT BEARS NORTH $06^{\circ}32'26''$ EAST, 119.77 FEET TO A POINT OF REVERSE CURVATURE; THENCE NORTHERLY, 34.24 FEET ALONG THE ARC OF A CIRCULAR CURVE, CONCAVE EASTERLY, HAVING A RADIUS OF 65.00 FEET, THROUGH A CENTRAL ANGLE OF $30^{\circ}11'06''$ AND BEING SUBTENDED BY A CHORD THAT BEARS NORTH $06^{\circ}32'26''$ EAST, 33.85 FEET; THENCE NORTH $21^{\circ}37'59''$ EAST, A DISTANCE OF 100.89 FEET TO A POINT OF CURVATURE; THENCE NORTHERLY, 162.28 FEET ALONG THE ARC OF A CIRCULAR CURVE, CONCAVE WESTERLY, HAVING A RADIUS OF 1,190.00 FEET, THROUGH A CENTRAL ANGLE OF $07^{\circ}48'48''$ AND BEING SUBTENDED BY A CHORD THAT BEARS NORTH $17^{\circ}43'35''$ EAST, 162.15 FEET TO A POINT OF REVERSE CURVATURE; THENCE NORTHERLY, 138.92 FEET ALONG THE ARC OF A CIRCULAR CURVE, CONCAVE EASTERLY, HAVING A RADIUS OF 510.00 FEET, THROUGH A CENTRAL ANGLE OF $15^{\circ}36'23''$ AND BEING SUBTENDED BY A CHORD THAT BEARS NORTH $21^{\circ}37'22''$ EAST, 138.49 FEET TO A POINT OF REVERSE CURVATURE; THENCE NORTHERLY, 376.91 FEET ALONG THE ARC OF A CIRCULAR CURVE, CONCAVE WESTERLY, HAVING A RADIUS OF 890.00 FEET, THROUGH A CENTRAL ANGLE OF $24^{\circ}15'51''$ AND BEING SUBTENDED BY A CHORD THAT BEARS NORTH $17^{\circ}17'38''$ EAST, 374.10 FEET TO A POINT OF



RHODES & RHODES LAND SURVEYING, INC.

28100 BONITA GRANDE DRIVE SUITE 107
BONITA SPRINGS, FLORIDA 34136
PHONE (833) 403-8160 FAX (833) 403-8163

REVERSE CURVATURE; THENCE NORTHEASTERLY, 56.89 FEET ALONG THE ARC OF A CIRCULAR CURVE, CONCAVE SOUTHEASTERLY, HAVING A RADIUS OF 50.00 FEET, THROUGH A CENTRAL ANGLE OF 65°11'08" AND BEING SUBTENDED BY A CHORD THAT BEARS NORTH 37°45'17" EAST, 53.87 FEET; THENCE NORTH 68°59'19" EAST, A DISTANCE OF 25.61 FEET; THENCE SOUTH 51°48'02" EAST, A DISTANCE OF 171.93 FEET TO A POINT ON A NON-TANGENTIAL CURVE; THENCE NORTHEASTERLY, 143.41 FEET ALONG THE ARC OF A CIRCULAR CURVE, CONCAVE SOUTHEASTERLY, HAVING A RADIUS OF 895.00 FEET, THROUGH A CENTRAL ANGLE OF 09°10'51" AND BEING SUBTENDED BY A CHORD THAT BEARS NORTH 44°11'54" EAST, 143.26 FEET TO A POINT OF REVERSE CURVATURE; THENCE NORTHEASTERLY, 157.90 FEET ALONG THE ARC OF A CIRCULAR CURVE, CONCAVE NORTHWESTERLY, HAVING A RADIUS OF 668.60 FEET, THROUGH A CENTRAL ANGLE OF 13°31'53" AND BEING SUBTENDED BY A CHORD THAT BEARS NORTH 42°01'23" EAST, 157.53 FEET TO A POINT OF COMPOUND CURVATURE; THENCE NORTHEASTERLY, 185.88 FEET ALONG THE ARC OF A CIRCULAR CURVE, CONCAVE NORTHWESTERLY, HAVING A RADIUS OF 500.00 FEET, THROUGH A CENTRAL ANGLE OF 21°18'01" AND BEING SUBTENDED BY A CHORD THAT BEARS NORTH 24°36'26" EAST, 184.81 FEET; THENCE NORTH 13°57'25" EAST, A DISTANCE OF 434.86 FEET TO A POINT OF CURVATURE; THENCE NORTHEASTERLY, 389.88 FEET ALONG THE ARC OF A CIRCULAR CURVE, CONCAVE SOUTHEASTERLY, HAVING A RADIUS OF 495.00 FEET, THROUGH A CENTRAL ANGLE OF 45°07'42" AND BEING SUBTENDED BY A CHORD THAT BEARS NORTH 36°31'16" EAST, 379.88 FEET TO A POINT OF REVERSE CURVATURE; THENCE NORTHEASTERLY, 151.58 FEET ALONG THE ARC OF A CIRCULAR CURVE, CONCAVE NORTHWESTERLY, HAVING A RADIUS OF 150.00 FEET, THROUGH A CENTRAL ANGLE OF 57°54'01" AND BEING SUBTENDED BY A CHORD THAT BEARS NORTH 30°08'06" EAST, 145.21 FEET TO A POINT ON A NON-TANGENTIAL CURVE; THENCE EASTERLY, 303.95 FEET ALONG THE ARC OF A CIRCULAR CURVE, CONCAVE NORTHERLY, HAVING A RADIUS OF 255.00 FEET, THROUGH A CENTRAL ANGLE OF 68°17'37" AND BEING SUBTENDED BY A CHORD THAT BEARS NORTH 72°41'19" EAST, 286.27 FEET TO A POINT OF REVERSE CURVATURE; THENCE NORTHEASTERLY, 214.76 FEET ALONG THE ARC OF A CIRCULAR CURVE, CONCAVE SOUTHEASTERLY, HAVING A RADIUS OF 250.00 FEET, THROUGH A CENTRAL ANGLE OF 49°13'09" AND BEING SUBTENDED BY A CHORD THAT BEARS NORTH 63°09'05" EAST, 208.22 FEET TO A POINT OF REVERSE CURVATURE; THENCE NORTHEASTERLY, 248.23 FEET ALONG THE ARC OF A CIRCULAR CURVE, CONCAVE NORTHWESTERLY, HAVING A RADIUS OF 210.00 FEET, THROUGH A CENTRAL ANGLE OF 67°43'34" AND BEING SUBTENDED BY A CHORD THAT BEARS NORTH 53°53'52" EAST, 234.03 FEET TO A POINT OF REVERSE CURVATURE; THENCE NORTHEASTERLY, 122.11 FEET ALONG THE ARC OF A CIRCULAR CURVE, CONCAVE SOUTHEASTERLY, HAVING A RADIUS OF 100.00 FEET, THROUGH A CENTRAL ANGLE OF 69°57'55" AND BEING SUBTENDED BY A CHORD THAT BEARS NORTH 55°01'02" EAST, 114.67 FEET TO A POINT OF REVERSE CURVATURE; THENCE EASTERLY, 57.32 FEET ALONG THE ARC OF A CIRCULAR CURVE, CONCAVE NORTHERLY, HAVING A RADIUS OF 100.00 FEET, THROUGH A CENTRAL ANGLE OF 32°50'27" AND BEING SUBTENDED BY A CHORD THAT BEARS NORTH 73°34'46" EAST, 56.54 FEET; THENCE NORTH 57°09'32" EAST, A DISTANCE OF 115.02 FEET; THENCE NORTH 04°35'06" WEST, A DISTANCE OF 86.36 FEET TO A POINT ON A NON-TANGENTIAL CURVE; THENCE NORTHEASTERLY, 528.63 FEET ALONG THE ARC OF A CIRCULAR CURVE, CONCAVE NORTHWESTERLY, HAVING A RADIUS OF 830.00 FEET, THROUGH A CENTRAL ANGLE OF 36°29'32" AND BEING SUBTENDED BY A CHORD THAT BEARS NORTH 66°47'03" EAST, 519.74 FEET TO A POINT OF REVERSE CURVATURE; THENCE EASTERLY, 403.75 FEET ALONG THE ARC OF A CIRCULAR CURVE, CONCAVE SOUTHERLY, HAVING A RADIUS OF 300.00 FEET, THROUGH A CENTRAL ANGLE OF 77°06'37" AND BEING SUBTENDED BY A CHORD THAT BEARS NORTH 87°05'36" EAST, 373.96 FEET; THENCE NORTH 35°38'54" EAST, A DISTANCE OF 200.00 FEET; THENCE SOUTH 54°21'06" EAST, A DISTANCE OF 910.68 FEET; THENCE SOUTH 35°39'40" WEST, A DISTANCE OF 103.80 FEET TO A POINT ON A NON-TANGENTIAL CURVE; THENCE SOUTHERLY, 405.42 FEET ALONG THE ARC OF A CIRCULAR CURVE, CONCAVE WESTERLY, HAVING A RADIUS OF 350.00 FEET, THROUGH A CENTRAL ANGLE OF 66°22'03" AND BEING SUBTENDED BY A CHORD THAT BEARS SOUTH 12°43'12" EAST, 383.13 FEET TO A POINT OF REVERSE CURVATURE; THENCE SOUTHEASTERLY, 289.19 FEET ALONG THE ARC OF A CIRCULAR CURVE, CONCAVE NORTHEASTERLY, HAVING A RADIUS OF 150.00 FEET, THROUGH A CENTRAL ANGLE OF 110°27'50" AND BEING SUBTENDED BY A CHORD THAT BEARS SOUTH 34°46'05" EAST, 246.44 FEET; THENCE SOUTH 90°00'00" EAST, A DISTANCE OF 58.44 FEET TO A POINT OF CURVATURE; THENCE NORTHEASTERLY, 18.33 FEET ALONG THE ARC OF A CIRCULAR



RHODES & RHODES LAND SURVEYING, INC.

28100 BONITA GRANDE DRIVE SUITE 107
BONITA SPRINGS, FLORIDA 34135
PHONE (839) 405-8166 FAX (839) 405-8163

CURVE, CONCAVE NORTHWESTERLY, HAVING A RADIUS OF 20.00 FEET, THROUGH A CENTRAL ANGLE OF 52°30'17" AND BEING SUBTENDED BY A CHORD THAT BEARS NORTH 63°44'51" EAST, 17.69 FEET TO A POINT OF REVERSE CURVATURE; THENCE NORTHEASTERLY, 24.89 FEET ALONG THE ARC OF A CIRCULAR CURVE, CONCAVE SOUTHEASTERLY, HAVING A RADIUS OF 95.00 FEET, THROUGH A CENTRAL ANGLE OF 15°00'34" AND BEING SUBTENDED BY A CHORD THAT BEARS NORTH 45°00'00" EAST, 24.82 FEET TO A POINT OF REVERSE CURVATURE; THENCE NORTHEASTERLY, 18.33 FEET ALONG THE ARC OF A CIRCULAR CURVE, CONCAVE NORTHWESTERLY, HAVING A RADIUS OF 20.00 FEET, THROUGH A CENTRAL ANGLE OF 52°30'17" AND BEING SUBTENDED BY A CHORD THAT BEARS NORTH 26°15'09" EAST, 17.69 FEET; THENCE SOUTH 90°00'00" EAST, A DISTANCE OF 100.00 FEET TO A POINT ON A NON-TANGENTIAL CURVE; THENCE SOUTHEASTERLY, 18.33 FEET ALONG THE ARC OF A CIRCULAR CURVE, CONCAVE NORTHEASTERLY, HAVING A RADIUS OF 20.00 FEET, THROUGH A CENTRAL ANGLE OF 52°30'17" AND BEING SUBTENDED BY A CHORD THAT BEARS SOUTH 26°15'09" EAST, 17.69 FEET TO A POINT OF REVERSE CURVATURE; THENCE SOUTHEASTERLY, 24.89 FEET ALONG THE ARC OF A CIRCULAR CURVE, CONCAVE SOUTHWESTERLY, HAVING A RADIUS OF 95.00 FEET, THROUGH A CENTRAL ANGLE OF 15°00'34" AND BEING SUBTENDED BY A CHORD THAT BEARS SOUTH 45°00'00" EAST, 24.82 FEET TO A POINT OF REVERSE CURVATURE; THENCE SOUTHEASTERLY, 18.33 FEET ALONG THE ARC OF A CIRCULAR CURVE, CONCAVE NORTHEASTERLY, HAVING A RADIUS OF 20.00 FEET, THROUGH A CENTRAL ANGLE OF 52°30'11" AND BEING SUBTENDED BY A CHORD THAT BEARS SOUTH 63°44'48" EAST, 17.69 FEET; THENCE SOUTH 00°00'00" WEST, A DISTANCE OF 130.00 FEET; THENCE SOUTH 90°00'00" EAST, A DISTANCE OF 113.79 FEET; THENCE SOUTH 00°00'00" WEST, A DISTANCE OF 150.36 FEET TO A POINT OF CURVATURE; THENCE SOUTHERLY, 165.62 FEET ALONG THE ARC OF A CIRCULAR CURVE, CONCAVE WESTERLY, HAVING A RADIUS OF 320.00 FEET, THROUGH A CENTRAL ANGLE OF 29°39'13" AND BEING SUBTENDED BY A CHORD THAT BEARS SOUTH 14°49'36" WEST, 163.77 FEET TO A POINT OF COMPOUND CURVATURE; THENCE SOUTHWESTERLY, 386.52 FEET ALONG THE ARC OF A CIRCULAR CURVE, CONCAVE NORTHWESTERLY, HAVING A RADIUS OF 1,190.00 FEET, THROUGH A CENTRAL ANGLE OF 18°36'36" AND BEING SUBTENDED BY A CHORD THAT BEARS SOUTH 38°57'31" WEST, 384.82 FEET TO A POINT ON A NON-TANGENTIAL CURVE; THENCE SOUTHEASTERLY, 46.86 FEET ALONG THE ARC OF A CIRCULAR CURVE, CONCAVE SOUTHWESTERLY, HAVING A RADIUS OF 45.00 FEET, THROUGH A CENTRAL ANGLE OF 59°39'38" AND BEING SUBTENDED BY A CHORD THAT BEARS SOUTH 44°45'36" EAST, 44.77 FEET TO A POINT OF REVERSE CURVATURE; THENCE SOUTHEASTERLY, 20.36 FEET ALONG THE ARC OF A CIRCULAR CURVE, CONCAVE NORTHEASTERLY, HAVING A RADIUS OF 62.58 FEET, THROUGH A CENTRAL ANGLE OF 18°38'25" AND BEING SUBTENDED BY A CHORD THAT BEARS SOUTH 24°15'00" EAST, 20.27 FEET TO A POINT OF REVERSE CURVATURE; THENCE SOUTHERLY, 48.52 FEET ALONG THE ARC OF A CIRCULAR CURVE, CONCAVE WESTERLY, HAVING A RADIUS OF 45.00 FEET, THROUGH A CENTRAL ANGLE OF 61°46'37" AND BEING SUBTENDED BY A CHORD THAT BEARS SOUTH 02°40'53" EAST, 46.20 FEET; THENCE SOUTH 28°12'25" WEST, A DISTANCE OF 70.46 FEET TO A POINT OF CURVATURE; THENCE SOUTHERLY, 139.04 FEET ALONG THE ARC OF A CIRCULAR CURVE, CONCAVE EASTERLY, HAVING A RADIUS OF 300.00 FEET, THROUGH A CENTRAL ANGLE OF 26°33'16" AND BEING SUBTENDED BY A CHORD THAT BEARS SOUTH 14°55'47" WEST, 137.80 FEET TO A POINT OF REVERSE CURVATURE; THENCE SOUTHWESTERLY, 389.19 FEET ALONG THE ARC OF A CIRCULAR CURVE, CONCAVE NORTHWESTERLY, HAVING A RADIUS OF 300.00 FEET, THROUGH A CENTRAL ANGLE OF 74°19'47" AND BEING SUBTENDED BY A CHORD THAT BEARS SOUTH 38°49'03" WEST, 362.47 FEET TO A POINT OF REVERSE CURVATURE; THENCE SOUTHWESTERLY, 450.20 FEET ALONG THE ARC OF A CIRCULAR CURVE, CONCAVE SOUTHEASTERLY, HAVING A RADIUS OF 300.00 FEET, THROUGH A CENTRAL ANGLE OF 85°58'55" AND BEING SUBTENDED BY A CHORD THAT BEARS SOUTH 32°59'29" WEST, 409.13 FEET TO A POINT OF REVERSE CURVATURE; THENCE SOUTHWESTERLY, 87.83 FEET ALONG THE ARC OF A CIRCULAR CURVE, CONCAVE NORTHWESTERLY, HAVING A RADIUS OF 45.00 FEET, THROUGH A CENTRAL ANGLE OF 111°49'56" AND BEING SUBTENDED BY A CHORD THAT BEARS SOUTH 45°55'00" WEST, 74.54 FEET; THENCE NORTH 78°10'02" WEST, A DISTANCE OF 194.68 FEET TO A POINT OF CURVATURE; THENCE NORTHERLY, 91.65 FEET ALONG THE ARC OF A CIRCULAR CURVE, CONCAVE EASTERLY, HAVING A RADIUS OF 45.00 FEET, THROUGH A CENTRAL ANGLE OF 116°41'28" AND BEING SUBTENDED BY A CHORD THAT BEARS NORTH 19°49'18" WEST, 76.61 FEET; THENCE NORTH 38°31'26" EAST, A DISTANCE OF 111.08 FEET; THENCE NORTH 51°28'34" WEST, A DISTANCE OF 105.27 FEET TO A POINT ON A NON-



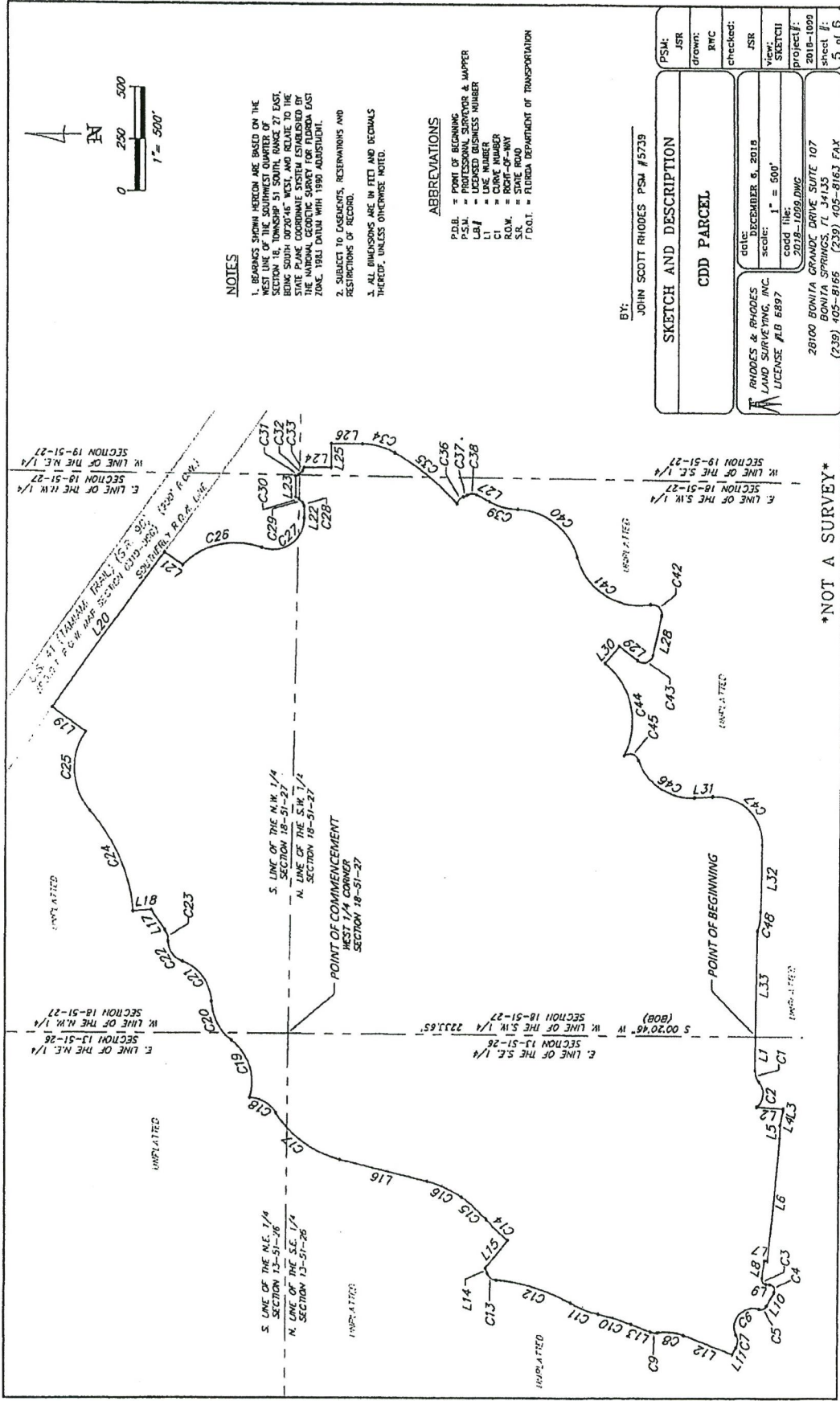
RHODES & RHODES LAND SURVEYING, INC.

88100 BONITA GRANDE DRIVE SUITE 107
BONITA SPRINGS, FLORIDA 34135
PHONE (239) 405-8166 FAX (239) 405-8163

TANGENTIAL CURVE; THENCE WESTERLY, 483.85 FEET ALONG THE ARC OF A CIRCULAR CURVE, CONCAVE NORTHERLY, HAVING A RADIUS OF 365.00 FEET, THROUGH A CENTRAL ANGLE OF 75°57'07" AND BEING SUBTENDED BY A CHORD THAT BEARS SOUTH 78°42'43" WEST, 449.19 FEET TO A POINT ON A NON-TANGENTIAL CURVE; THENCE SOUTHERLY, 84.57 FEET ALONG THE ARC OF A CIRCULAR CURVE, CONCAVE WESTERLY, HAVING A RADIUS OF 45.00 FEET, THROUGH A CENTRAL ANGLE OF 107°40'34" AND BEING SUBTENDED BY A CHORD THAT BEARS SOUTH 16°59'07" WEST, 72.66 FEET TO A POINT ON A NON-TANGENTIAL CURVE; THENCE SOUTHWESTERLY, 339.06 FEET ALONG THE ARC OF A CIRCULAR CURVE, CONCAVE SOUTHEASTERLY, HAVING A RADIUS OF 260.00 FEET, THROUGH A CENTRAL ANGLE OF 74°43'05" AND BEING SUBTENDED BY A CHORD THAT BEARS SOUTH 33°47'18" WEST, 315.54 FEET; THENCE SOUTH 03°34'14" EAST, A DISTANCE OF 87.88 FEET TO A POINT OF CURVATURE; THENCE SOUTHWESTERLY, 371.61 FEET ALONG THE ARC OF A CIRCULAR CURVE, CONCAVE NORTHWESTERLY, HAVING A RADIUS OF 225.00 FEET, THROUGH A CENTRAL ANGLE OF 94°37'47" AND BEING SUBTENDED BY A CHORD THAT BEARS SOUTH 43°44'40" WEST, 330.79 FEET; THENCE NORTH 88°56'27" WEST, A DISTANCE OF 322.37 FEET TO A POINT OF CURVATURE; THENCE WESTERLY, 92.45 FEET ALONG THE ARC OF A CIRCULAR CURVE, CONCAVE NORTHERLY, HAVING A RADIUS OF 285.00 FEET, THROUGH A CENTRAL ANGLE OF 18°35'10" AND BEING SUBTENDED BY A CHORD THAT BEARS NORTH 79°38'52" WEST, 92.05 FEET; THENCE NORTH 88°56'16" WEST, A DISTANCE OF 502.88 FEET TO THE POINT OF BEGINNING.

CONTAINING 9,147,731 SQUARE FEET OR 210.003 ACRES, MORE OR LESS.





NOTES

1. BEARINGS SHOWN HEREON ARE BASED ON THE WEST 1/4 CORNER OF SECTION 18-51-27, TOWNSHIP 51 SOUTH RANGE 27 EAST, BEING SOUTH 00°20'46" WEST, AND RELATED TO THE STATE PLANE COORDINATE SYSTEM ESTABLISHED BY THE NATIONAL GEODETIC SURVEY FOR FLORIDA EAST ZONE, 1983 DATUM WITH 1989 ADJUSTMENT.
2. SUBJECT TO EASEMENTS, RESERVATIONS AND RESTRICTIONS OF RECORD.
3. ALL DIMENSIONS ARE IN FEET AND DECIMALS THEREOF, UNLESS OTHERWISE NOTED.

ABBREVIATIONS

- P.D.B. = POINT OF BEGINNING
- P.S.M. = PROFESSIONAL SURVEYOR & MAPPER
- L.B.# = LICENSED BUSINESS NUMBER
- L1 = LICENSE NUMBER
- C# = CURVE NUMBER
- RO.W. = RIGHT-OF-WAY
- S.R. = STATE ROAD
- F.D.O.T. = FLORIDA DEPARTMENT OF TRANSPORTATION

BY: JOHN SCOTT RHODES PSM #5739

SKETCH AND DESCRIPTION CDD PARCEL	PSM: JSR
	DRAWN: RWC
RHODES & RHODES LAND SURVEYING, INC. LICENSE #LB 6897	checked: JSR
	DATE: DECEMBER 6, 2018
28100 BONITA GRAND DRIVE SUITE 107 BONITA SPRINGS, FL 34135 (239) 405-8166 (239) 405-8163 FAX	view: SKETCH
	project #: 2018-1009
	sheet #: 5 of 6

NOT A SURVEY



LINE	LENGTH	BEARING
L1	161.44'	S 85°56'16" W
L2	126.63'	S 64°17'00" W
L3	9.99'	N 84°46'00" W
L4	66.76'	N 77°45'48" W
L5	65.94'	N 68°51'30" W
L6	595.29'	N 84°45'16" W
L7	15.19'	N 08°46'55" E
L8	86.81'	N 81°13'05" W
L9	16.93'	S 05°47'49" W
L10	75.11'	N 61°39'14" W
L11	36.90'	N 61°39'14" W
L12	250.24'	N 21°37'59" E
L13	106.89'	N 21°37'59" E
L14	25.61'	N 68°59'19" E
L15	171.93'	S 91°46'07" E
L16	434.66'	N 13°37'25" E
L17	115.02'	N 57°09'37" E
L18	86.36'	N 04°15'06" W
L19	200.00'	N 35°38'54" E
L20	916.69'	S 35°39'40" W
L21	104.90'	S 35°39'40" W
L22	58.44'	S 80°00'00" E
L23	100.00'	S 80°00'00" E
L24	136.00'	S 80°00'00" E
L25	113.79'	S 80°00'00" E
L26	150.36'	S 80°00'00" E
L27	79.46'	S 28°12'25" W
L28	194.68'	N 38°21'26" E
L29	111.08'	N 38°21'26" E
L30	165.27'	N 51°28'34" E
L31	87.88'	S 03°34'14" E
L32	372.37'	N 68°36'27" W
L33	502.88'	N 68°36'16" W

CURVE	RADIUS	DELTA	LENGTH	CHORD	CHORD BEARING
C1	80.00'	42°52'13"	58.47'	S 69°37'38" W	
C2	81.20'	84°17'25"	133.49'	N 84°42'41" W	
C3	25.00'	93°04'09"	46.61'	S 52°14'52" W	
C4	23.00'	112°17'57"	41.52'	S 61°51'48" W	
C5	30.00'	81°02'25"	42.43'	S 38°58' N 31°28'01" W	
C6	90.00'	115°41'08"	213.13'	N 48°47'22" W	
C7	65.00'	54°38'43"	61.99'	N 89°18'35" W	
C8	230.00'	30°11'06"	121.17'	N 06°32'26" E	
C9	65.00'	30°11'06"	34.24'	N 06°32'26" E	
C10	1180.00'	7°48'48"	162.28'	N 17°43'35" E	
C11	510.00'	15°36'23"	138.92'	N 19°43'26" E	
C12	890.00'	24°15'51"	378.91'	N 37°37'22" E	
C13	50.00'	65°17'08"	56.89'	N 37°45'17" E	
C14	895.00'	9°10'51"	143.41'	N 143°26' N 44°17'54" E	
C15	668.60'	13°31'53"	152.90'	N 152°30' N 42°01'23" E	
C16	500.00'	45°07'42"	389.88'	N 35°31'16" E	
C17	495.00'	21°18'01"	165.88'	N 184.81' N 24°36'26" E	
C18	150.00'	57°54'01"	151.58'	N 145.21' N 30°08'06" E	
C19	250.00'	68°17'37"	303.95'	N 286.27' N 72°11'19" E	
C20	200.00'	69°13'09"	214.76'	N 208.22' N 63°09'05" E	
C21	70.00'	62°43'34"	74.81'	N 734.03' N 33°33'52" E	
C22	100.00'	92°50'27"	57.17'	N 41.64' N 25°01'00" E	
C23	100.00'	35°20'32"	57.17'	N 41.64' N 65°37'49" E	
C24	830.00'	27°06'32"	403.25'	N 325.96' N 87°25'16" E	
C25	350.00'	66°27'03"	408.42'	N 383.13' S 12°43'12" E	
C26	150.00'	110°27'50"	289.19'	N 746.44' S 34°46'05" E	
C27	20.00'	52°10'17"	18.11'	N 17.69' N 63°44'51" E	
C28	95.00'	52°10'17"	24.89'	N 24.87' N 45°00'00" E	
C29	20.00'	52°10'17"	18.33'	N 17.69' N 26°15'09" E	
C30	20.00'	52°10'17"	18.33'	N 17.69' S 26°15'09" E	
C31	20.00'	52°10'17"	18.33'	N 17.69' S 26°15'09" E	
C32	95.00'	15°00'34"	24.89'	N 24.87' S 45°00'00" E	
C33	20.00'	52°10'17"	18.33'	N 17.69' S 63°14'48" E	
C34	1190.00'	29°39'13"	165.62'	N 163.77' S 14°49'58" W	
C35	1190.00'	18°36'36"	386.52'	N 384.82' S 39°52'31" W	
C36	45.00'	59°39'28"	46.66'	N 44.77' S 44°45'36" E	
C37	52.58'	18°38'25"	20.26'	N 20.27' S 24°15'00" E	
C38	45.00'	61°46'37"	46.59'	N 46.20' S 07°40'53" E	
C39	100.00'	26°33'16"	138.04'	N 137.80' S 14°55'47" W	
C40	100.00'	74°19'47"	389.19'	N 362.47' S 37°59'29" W	
C41	300.00'	85°59'55"	450.20'	N 408.13' S 45°55'00" W	
C42	45.00'	111°49'56"	87.63'	N 74.54' S 45°55'00" W	
C43	45.00'	116°41'28"	91.65'	N 76.61' N 19°49'18" E	
C44	365.00'	28°37'07"	483.85'	N 449.19' S 78°42'41" W	
C45	45.00'	107°40'54"	84.57'	N 72.66' S 16°59'07" W	
C46	260.00'	74°43'05"	338.06'	N 315.54' S 33°42'18" W	
C47	225.00'	94°37'47"	371.61'	N 310.79' S 43°44'40" W	
C48	285.00'	18°35'10"	92.45'	N 292.99' S 29°39'57" W	

SKETCH AND DESCRIPTION

CDD PARCEL

DATE: DECEMBER 6, 2018
 SCALE: 1" = 500'
 CDD TITLE: 201A-1695.DMC

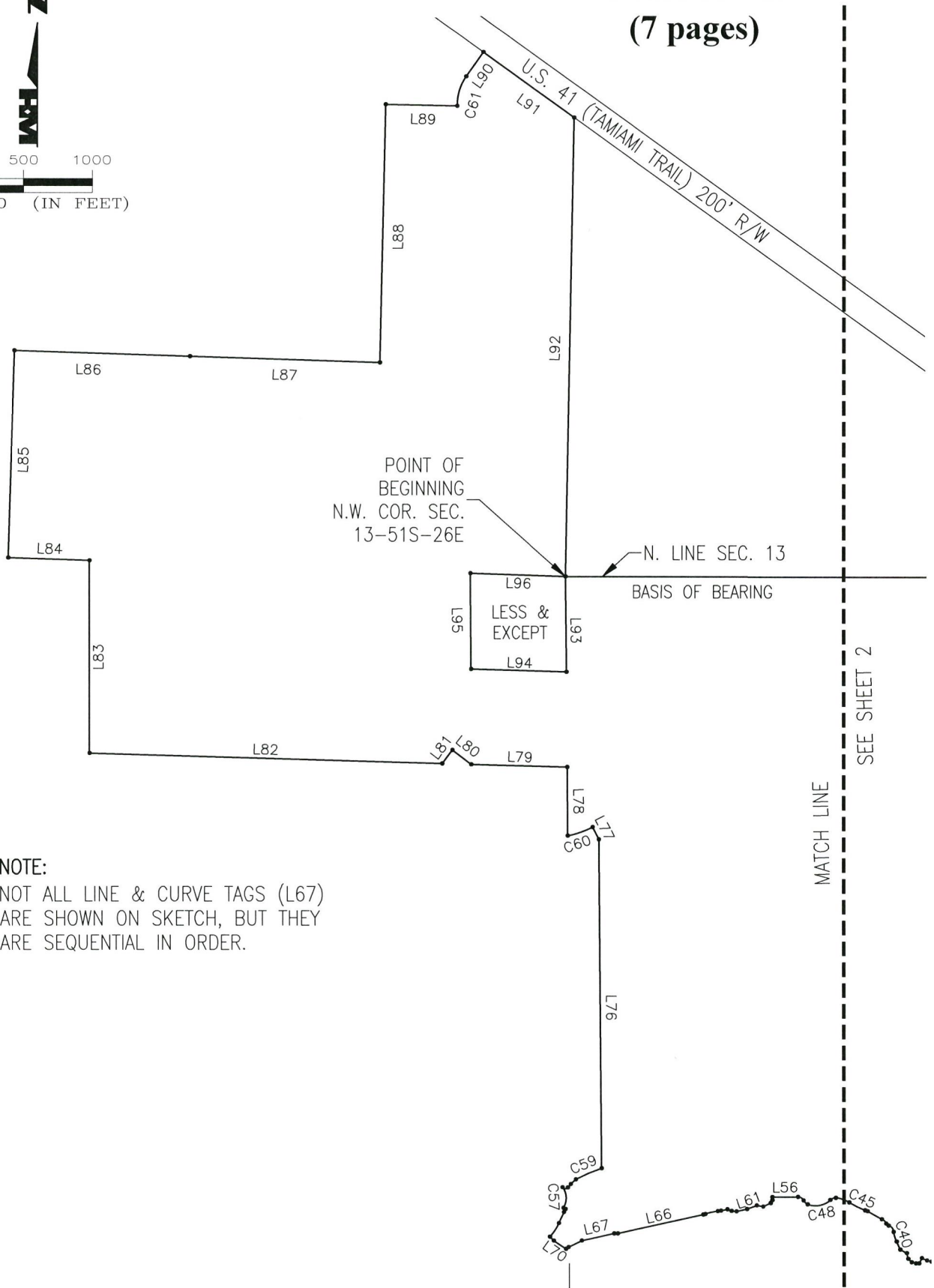
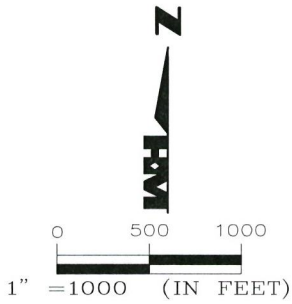
RHODES & RHODES
 LAND SURVEYING, INC.
 LICENSE # B 6897

28100 BONITA GRANDE DRIVE SUITE 107
 BONITA SPRINGS, FL 34135
 (239) 405-8166 (239) 405-8163 FAX

PSM: JSR
 DRAWN: RWC
 CHECKED: JSR
 DATE: SKETCH
 PROJECT #: 2018-1089
 SHEET #: 6 of 6

NOT A SURVEY

EXHIBIT "B" (7 pages)



NOTE:
NOT ALL LINE & CURVE TAGS (L67)
ARE SHOWN ON SKETCH, BUT THEY
ARE SEQUENTIAL IN ORDER.

* NOT A SURVEY *

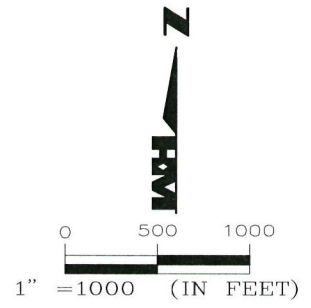
DRAWN BY: G.N	DATE: 7/14/2021
SHEET # 1	OF SHEET 7
SEC-TWN-RGE: 11,12,13,14,18,24-51S-26,27E	



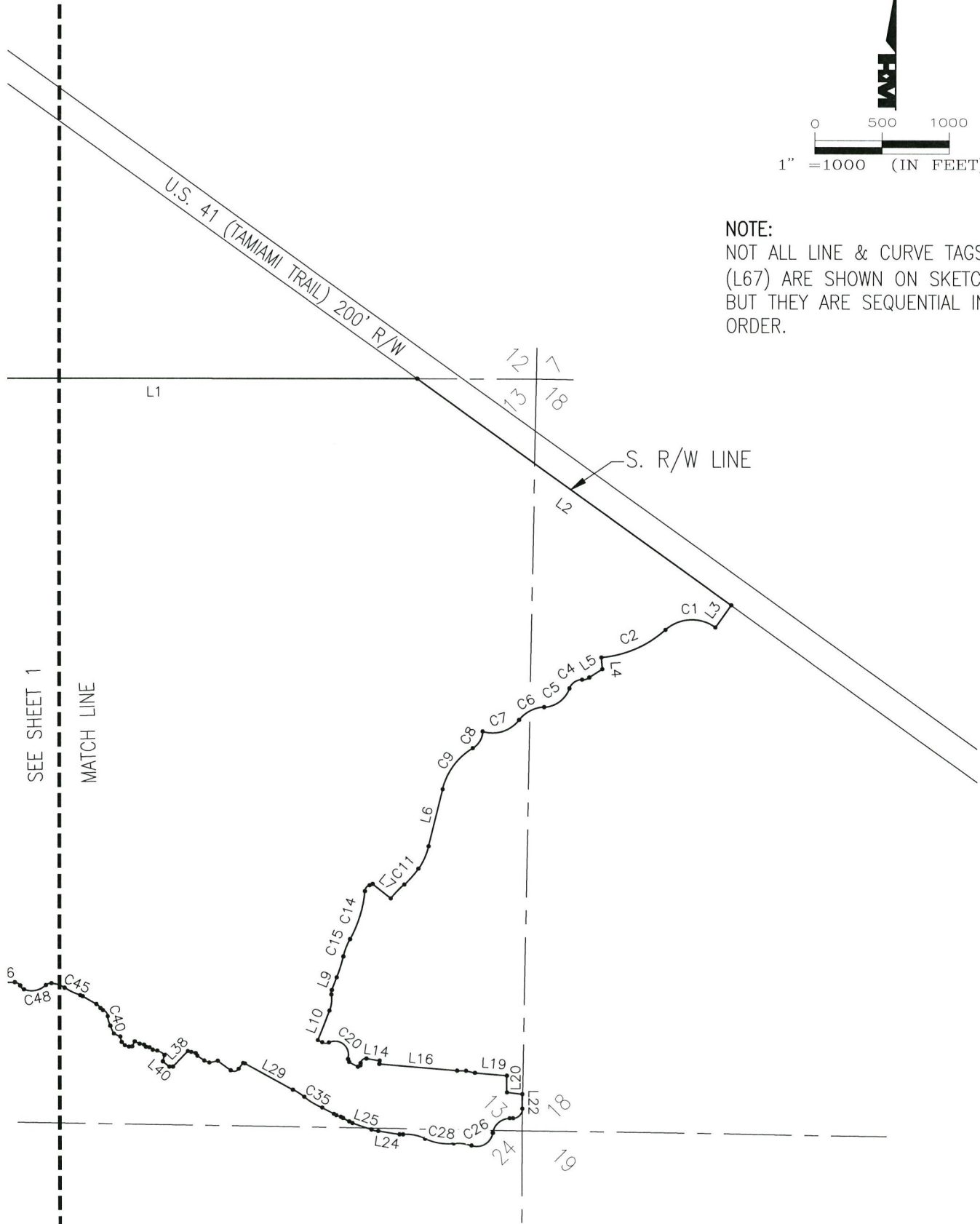
950 Encore Way
Naples, FL. 34110
Phone: (239) 254-2000
Florida Certificate of
Authorization No.1772

LEGAL DESCRIPTION
COMMUNITY DEVELOPMENT DISTRICT 2

DRAWING NO. H-1646
PROJECT NO. 2021.009
FILE NAME 2021009 CDD2.dwg



NOTE:
 NOT ALL LINE & CURVE TAGS
 (L67) ARE SHOWN ON SKETCH,
 BUT THEY ARE SEQUENTIAL IN
 ORDER.



* NOT A SURVEY *

DRAWN BY: G.N	DATE: 7/14/2021
SHEET # 2	OF SHEET 7
SEC-TWN-RGE: 11,12,13,14,18,24-51S-26,27E	



950 Encore Way
 Naples, FL. 34110
 Phone: (239) 254-2000
 Florida Certificate of
 Authorization No.1772

LEGAL DESCRIPTION
 COMMUNITY DEVELOPMENT DISTRICT 2

DRAWING NO. H-1646
PROJECT NO. 2021.009
FILE NAME 2021009 CDD2.dwg

CURVE	RADIUS	DELTA ANGLE	CHORD LENGTH	CHORD BEARING	ARC LENGTH
C1	300.00'	77°06'37"	373.96'	S 87°05'36" W	403.75'
C2	830.00'	36°29'32"	519.74'	S 66°47'03" W	528.63'
C3	100.00'	32°50'27"	56.54'	S 73°34'46" W	57.32'
C4	100.00'	69°57'55"	114.67'	S 55°01'02" W	122.11'
C5	210.00'	67°43'34"	234.03'	S 53°53'52" W	248.23'
C6	250.00'	49°13'09"	208.22'	S 63°09'05" W	214.76'
C7	255.00'	68°17'37"	286.27'	S 72°41'19" W	303.95'
C8	150.00'	57°54'01"	145.21'	S 30°08'06" W	151.58'
C9	495.00'	45°07'42"	379.88'	S 36°31'16" W	389.88'
C10	500.00'	21°18'01"	184.81'	S 24°36'26" W	185.88'
C11	668.60'	13°31'53"	157.53'	S 42°01'23" W	157.90'
C12	895.00'	9°10'51"	143.26'	S 44°11'54" W	143.41'
C13	50.00'	65°11'08"	53.87'	S 37°45'17" W	56.89'
C14	890.00'	24°15'51"	374.10'	S 17°17'38" W	376.91'
C15	510.00'	15°36'23"	138.49'	S 21°37'22" W	138.92'
C16	1190.00'	7°48'48"	162.15'	S 17°43'35" W	162.28'
C17	65.00'	30°11'06"	33.85'	S 06°32'26" W	34.24'
C18	230.00'	30°11'06"	119.77'	S 06°32'26" W	121.17'
C19	52.50'	54°38'43"	48.20'	S 89°18'35" E	50.07'
C20	102.50'	135°41'08"	189.86'	S 48°47'22" E	242.74'
C21	17.50'	81°02'25"	22.74'	S 21°28'01" E	24.75'
C22	12.50'	112°17'57"	20.76'	N 61°51'48" E	24.50'
C23	37.50'	93°04'05"	54.43'	N 52°14'52" E	60.91'
C24	70.00'	89°54'50"	98.92'	S 44°34'49" W	109.85'
C25	129.96'	80°33'19"	168.04'	S 49°12'16" W	182.72'
C26	120.01'	100°26'29"	184.46'	S 59°07'25" W	210.39'
C27	304.19'	25°25'07"	133.85'	N 83°21'54" W	134.95'
C28	402.41'	31°06'58"	215.86'	N 80°30'59" W	218.54'
C29	325.00'	30°05'59"	168.78'	N 78°56'52" W	170.74'
C30	120.00'	12°46'46"	26.71'	N 87°36'29" W	26.77'
C31	271.68'	10°56'29"	51.80'	N 76°32'40" W	51.88'
C32	140.00'	10°52'30"	26.53'	N 65°38'11" W	26.57'
C33	96.23'	10°36'19"	17.79'	N 64°55'59" W	17.81'
C34	140.00'	8°48'42"	21.51'	N 65°29'11" W	21.53'
C35	720.00'	12°30'32"	156.88'	N 59°08'56" W	157.19'
C36	680.00'	8°27'08"	100.22'	N 57°07'13" W	100.31'
C37	30.00'	26°22'37"	13.69'	N 74°32'05" W	13.81'
C38	42.54'	93°18'11"	61.87'	S 80°11'54" W	69.27'
C39	98.35'	37°51'20"	63.81'	N 58°33'08" W	64.98'
C40	247.83'	16°56'50"	73.04'	N 16°41'05" W	73.31'
C41	50.27'	69°00'31"	56.95'	N 38°42'54" W	60.55'
C42	31.19'	45°24'10"	24.07'	N 50°31'04" W	24.71'
C43	75.00'	33°51'50"	43.68'	N 44°44'54" W	44.33'
C44	100.00'	11°00'45"	19.19'	N 66°05'49" W	19.22'
C45	514.31'	14°23'31"	128.85'	N 64°24'26" W	129.19'
C46	214.22'	27°56'26"	103.43'	N 71°10'54" W	104.47'
C47	50.88'	49°55'53"	42.95'	S 70°37'08" W	44.34'
C48	155.35'	64°46'17"	166.41'	S 79°05'27" W	175.61'
C49	52.65'	44°41'17"	40.03'	N 46°10'47" W	41.06'
C50	43.00'	66°41'09"	47.27'	N 57°10'43" W	50.05'
C51	120.00'	11°00'24"	23.02'	S 83°10'24" W	23.05'
C52	542.06'	9°54'40"	93.65'	S 76°55'52" W	93.77'
C53	120.00'	7°23'59"	15.49'	S 73°58'13" W	15.50'
C54	70.00'	21°47'12"	26.46'	S 88°33'48" W	26.62'
C55	399.42'	16°56'44"	117.70'	N 33°24'14" E	118.13'
C56	3855.60'	1°18'19"	87.84'	N 24°16'42" E	87.84'
C57	132.52'	69°03'49"	150.24'	N 02°50'53" W	159.74'
C58	25.00'	103°08'09"	39.17'	S 88°42'50" E	45.00'
C59	1256.70'	9°17'06"	203.43'	N 66°28'50" E	203.65'
C60	708.91'	15°25'19"	190.23'	S 70°44'39" W	190.81'
C61	350.00'	37°05'11"	222.61'	N 17°05'16" E	226.55'

* NOT A SURVEY *

DRAWN BY: G.N
DATE: 7/14/2021
SHEET # 3 OF SHEET 7
SEC-TWN-RGE: 11,12,13,14,18,24-51S-26,27E



950 Encore Way
Naples, FL. 34110
Phone: (239) 254-2000
Florida Certificate of
Authorization No.1772

LEGAL DESCRIPTION
COMMUNITY DEVELOPMENT DISTRICT 2

DRAWING NO. H-1646
PROJECT NO. 2021.009
FILE NAME. 2021009 CDD2.dwg

LINE	BEARING	DISTANCE
L1	S 89°55'46" E	4688.27'
L2	S 54°21'29" E	2883.58'
L3	S 35°38'54" W	203.36'
L4	S 04°35'06" E	86.36'
L5	S 57°09'32" W	115.02'
L6	S 13°57'25" W	434.86'
L7	N 51°48'02" W	171.93'
L8	S 68°59'19" W	25.61'
L9	S 21°37'59" W	100.89'
L10	S 21°32'03" W	238.21'
L11	S 61°59'14" E	37.89'
L12	S 61°59'14" E	75.11'
L13	N 05°42'49" E	16.93'
L14	S 81°13'05" E	99.33'
L15	S 08°46'55" W	26.43'
L16	S 85°06'03" E	584.09'
L17	S 88°46'54" E	66.20'
L18	S 77°41'47" E	68.11'
L19	S 84°48'34" E	239.41'
L20	S 00°00'58" W	124.63'
L21	S 83°02'18" E	115.87'
L22	S 00°22'35" E	108.39'
L23	S 89°28'55" W	25.42'
L24	N 81°13'05" W	160.25'
L25	N 71°04'25" W	148.26'
L26	N 59°32'59" W	54.85'
L27	N 68°58'01" W	34.68'
L28	N 61°04'50" W	98.96'
L29	N 61°20'47" W	407.40'
L30	S 37°02'54" W	54.58'
L31	N 53°09'01" W	119.23'
L32	S 78°20'56" W	65.29'
L33	N 70°14'37" W	40.26'
L34	N 54°22'13" W	64.70'
L35	N 33°21'25" W	23.69'
L36	N 75°12'12" W	33.30'
L37	N 76°51'10" W	26.95'
L38	S 43°37'46" W	161.77'
L39	N 90°00'00" W	26.44'
L40	N 48°41'19" W	62.83'
L41	N 14°21'59" E	47.02'
L42	N 77°28'48" W	34.63'
L43	N 52°19'34" W	29.83'
L44	N 85°11'14" W	26.94'
L45	N 38°20'00" W	22.50'
L46	N 77°46'28" W	33.45'
L47	N 65°05'58" W	40.53'
L48	S 25°54'37" W	42.30'

LINE	BEARING	DISTANCE
L49	S 88°48'27" W	24.84'
L50	N 73°55'13" W	30.71'
L51	N 42°59'31" W	35.20'
L52	N 14°24'37" W	43.32'
L53	N 63°10'35" W	52.78'
L54	N 24°20'06" W	64.72'
L55	N 60°16'17" W	117.36'
L56	S 89°33'28" W	185.48'
L57	S 00°29'56" E	22.52'
L58	S 30°23'51" W	24.71'
L59	S 65°20'21" W	59.88'
L60	N 79°13'24" W	47.16'
L61	S 69°39'07" W	76.08'
L62	S 77°25'16" W	77.61'
L63	N 86°34'08" W	36.83'
L64	N 69°14'10" W	32.78'
L65	S 77°40'12" W	46.94'
L66	S 77°40'12" W	633.48'
L67	S 77°40'12" W	242.08'
L68	S 63°50'35" W	105.72'
L69	S 53°26'00" W	22.75'
L70	N 55°15'12" W	106.68'
L71	N 45°28'07" W	39.52'
L72	N 28°56'05" E	24.08'
L73	N 59°52'05" W	16.74'
L74	N 41°40'21" E	33.12'
L75	N 47°08'59" E	48.64'
L76	N 00°25'53" W	2378.44'
L77	N 26°57'22" W	100.00'
L78	N 00°25'37" W	495.65'
L79	N 88°20'43" W	693.91'
L80	N 52°51'27" W	171.83'
L81	S 37°08'33" W	122.51'
L82	N 88°20'43" W	2557.48'
L83	N 00°02'26" E	1389.71'
L84	N 88°05'43" W	590.35'
L85	N 01°43'02" E	1493.79'
L86	S 88°09'55" E	1274.00'
L87	S 88°09'46" E	1374.52'
L88	N 01°13'54" E	1860.10'
L89	S 88°46'12" E	518.33'
L90	N 35°37'51" E	214.87'
L91	S 54°21'53" E	807.97'
L92	S 01°00'06" W	3308.61'
L93	N 00°26'31" W	687.45'
L94	S 88°13'02" E	691.39'
L95	S 00°20'41" E	688.94'
L96	N 88°05'23" W	690.28'

* NOT A SURVEY *

DRAWN BY: G.N
DATE: 7/14/2021
SHEET # 4 OF SHEET 7
SEC-TWN-RGE: 11,12,13,14,18,24-51S-26,27E



950 Encore Way
Naples, FL. 34110
Phone: (239) 254-2000
Florida Certificate of
Authorization No.1772

LEGAL DESCRIPTION
COMMUNITY DEVELOPMENT DISTRICT 2


DRAWING NO. H-1646
PROJECT NO. 2021.009
FILE NAME 2021009 CDD2.dwg

LEGAL DESCRIPTION:

A PARCEL OF LAND LOCATED IN SECTIONS 11, 12, 13, 14, 18 AND 24, TOWNSHIP 51 SOUTH, RANGE 26 EAST, AND SECTION 18, TOWNSHIP 51 SOUTH, RANGE 26 & 27 EAST, COLLIER COUNTY, FLORIDA AND BEING MORE PARTICULARLY DESCRIBED AS FOLLOWS:

BEGIN AT THE NORTHWEST CORNER OF SECTION 13, TOWNSHIP 51 SOUTH, RANGE 26 EAST, COLLIER COUNTY, FLORIDA; THENCE ALONG THE NORTH LINE OF SAID SECTION 13, RUN S89°55'46"E FOR A DISTANCE OF 4688.27 FEET, TO A POINT ON THE SOUTHERLY RIGHT-OF-WAY LINE OF U.S. 41 (TAMIAMI TRAIL), A 200' WIDE RIGHT-OF-WAY; THENCE ALONG SAID SOUTHERLY RIGHT-OF-WAY LINE, RUN S54°21'29"E FOR A DISTANCE OF 2883.58 FEET; THENCE LEAVING SAID SOUTHERLY RIGHT-OF-WAY LINE, THENCE RUN S35°38'54"W FOR A DISTANCE OF 203.36 FEET, TO THE BEGINNING OF A NON-TANGENTIAL CIRCULAR CURVE; THENCE ALONG SAID CURVE TO THE LEFT, HAVING A RADIUS OF 300.00 FEET, AT A BEARING OF S35°38'54"W THEREFROM, THROUGH A CENTRAL ANGLE OF 77°06'37" AND BEING SUBTENDED BY A CHORD OF 373.96 FEET AT A BEARING OF S87°05'36"W, FOR AN ARC LENGTH OF 403.75 FEET, TO A POINT OF REVERSE CURVATURE; THENCE ALONG SAID CURVE TO THE RIGHT, HAVING A RADIUS OF 830.00 FEET, THROUGH A CENTRAL ANGLE OF 36°29'32" AND BEING SUBTENDED BY A CHORD OF 519.74 FEET AT A BEARING OF S66°47'03"W, FOR AN ARC LENGTH OF 528.63 FEET; THENCE RUN S04°35'06"E FOR A DISTANCE OF 86.36 FEET; THENCE RUN S57°09'32"W FOR A DISTANCE OF 115.02 FEET, TO THE BEGINNING OF A TANGENTIAL CIRCULAR CURVE; THENCE ALONG SAID CURVE TO THE RIGHT, HAVING A RADIUS OF 100.00 FEET, THROUGH A CENTRAL ANGLE OF 32°50'27" AND BEING SUBTENDED BY A CHORD OF 56.54 FEET AT A BEARING OF S73°34'46"W, FOR AN ARC LENGTH OF 57.32 FEET, TO A POINT OF REVERSE CURVATURE; THENCE ALONG SAID CURVE TO THE LEFT, HAVING A RADIUS OF 100.00 FEET, THROUGH A CENTRAL ANGLE OF 69°57'55" AND BEING SUBTENDED BY A CHORD OF 114.67 FEET AT A BEARING OF S55°01'02"W, FOR AN ARC LENGTH OF 122.11 FEET, TO A POINT OF REVERSE CURVATURE; THENCE ALONG SAID CURVE TO THE RIGHT, HAVING A RADIUS OF 210.00 FEET, THROUGH A CENTRAL ANGLE OF 67°43'34" AND BEING SUBTENDED BY A CHORD OF 234.03 FEET AT A BEARING OF S53°53'52"W, FOR AN ARC LENGTH OF 248.23 FEET, TO A POINT OF REVERSE CURVATURE; THENCE ALONG SAID CURVE TO THE LEFT, HAVING A RADIUS OF 250.00 FEET, THROUGH A CENTRAL ANGLE OF 49°13'09" AND BEING SUBTENDED BY A CHORD OF 208.22 FEET AT A BEARING OF S63°09'05"W, FOR AN ARC LENGTH OF 214.76 FEET, TO A POINT OF REVERSE CURVATURE; THENCE ALONG SAID CURVE TO THE RIGHT, HAVING A RADIUS OF 255.00 FEET, THROUGH A CENTRAL ANGLE OF 68°17'37" AND BEING SUBTENDED BY A CHORD OF 286.27 FEET AT A BEARING OF S72°41'19"W, FOR AN ARC LENGTH OF 303.95 FEET, TO A POINT OF COMPOUND CURVATURE; THENCE ALONG SAID CURVE TO THE RIGHT, HAVING A RADIUS OF 150.00 FEET, AT A BEARING OF N88°48'54"W THEREFROM, THROUGH A CENTRAL ANGLE OF 57°54'01" AND BEING SUBTENDED BY A CHORD OF 145.21 FEET AT A BEARING OF S30°08'06"W, FOR AN ARC LENGTH OF 151.58 FEET, TO A POINT OF REVERSE CURVATURE; THENCE ALONG SAID CURVE TO THE LEFT, HAVING A RADIUS OF 495.00 FEET, THROUGH A CENTRAL ANGLE OF 45°07'42" AND BEING SUBTENDED BY A CHORD OF 379.88 FEET AT A BEARING OF S36°31'16"W, FOR AN ARC LENGTH OF 389.88 FEET; THENCE RUN S13°57'25"W FOR A DISTANCE OF 434.86 FEET, TO THE BEGINNING OF A TANGENTIAL CIRCULAR CURVE; THENCE ALONG SAID CURVE TO THE RIGHT, HAVING A RADIUS OF 500.00 FEET, THROUGH A CENTRAL ANGLE OF 21°18'01" AND BEING SUBTENDED BY A CHORD OF 184.81 FEET AT A BEARING OF S24°36'26"W, FOR AN ARC LENGTH OF 185.88 FEET, TO A POINT OF COMPOUND CURVATURE; THENCE ALONG SAID CURVE TO THE RIGHT, HAVING A RADIUS OF 668.60 FEET, THROUGH A CENTRAL ANGLE OF 13°31'53" AND BEING SUBTENDED BY A CHORD OF 157.53 FEET AT A BEARING OF S42°01'23"W, FOR AN ARC LENGTH OF 157.90 FEET, TO A POINT OF REVERSE CURVATURE; THENCE ALONG SAID CURVE TO THE LEFT, HAVING A RADIUS OF 895.00 FEET, THROUGH A CENTRAL ANGLE OF 09°10'51" AND BEING SUBTENDED BY A CHORD OF 143.26 FEET AT A BEARING OF S44°11'54"W, FOR AN ARC LENGTH OF 143.41 FEET; THENCE RUN N51°48'02"W FOR A DISTANCE OF 171.93 FEET; THENCE RUN S68°59'19"W FOR A DISTANCE OF 25.61 FEET, TO THE BEGINNING OF A NON-TANGENTIAL CIRCULAR CURVE; THENCE ALONG SAID CURVE TO THE LEFT, HAVING A RADIUS OF 50.00 FEET, AT A BEARING OF S19°39'09"E THEREFROM, THROUGH A CENTRAL ANGLE OF 65°11'08" AND BEING SUBTENDED BY A CHORD OF 53.87 FEET AT A BEARING OF S37°45'17"W, FOR AN ARC LENGTH OF 56.89 FEET, TO A POINT OF REVERSE CURVATURE; THENCE ALONG SAID CURVE TO THE RIGHT, HAVING A RADIUS OF 890.00 FEET, THROUGH A CENTRAL ANGLE OF 24°15'51" AND BEING SUBTENDED BY A CHORD OF 374.10 FEET AT A BEARING OF S17°17'38"W, FOR AN ARC LENGTH OF 376.91 FEET, TO A POINT OF REVERSE CURVATURE; THENCE ALONG SAID CURVE TO THE LEFT, HAVING A RADIUS OF 510.00 FEET, THROUGH A CENTRAL ANGLE OF 15°36'23" AND BEING SUBTENDED BY A CHORD OF 138.49 FEET AT A BEARING OF S21°37'22"W, FOR AN ARC LENGTH OF 138.92 FEET, TO A POINT OF REVERSE CURVATURE; THENCE ALONG SAID CURVE TO THE RIGHT, HAVING A RADIUS OF 1190.00 FEET, THROUGH A CENTRAL ANGLE OF 07°48'48" AND BEING SUBTENDED BY A CHORD OF 162.15 FEET AT A BEARING OF S17°43'35"W, FOR AN ARC LENGTH OF 162.28 FEET; THENCE RUN S21°37'59"W FOR A DISTANCE OF 100.89 FEET, TO THE BEGINNING OF A TANGENTIAL CIRCULAR CURVE; THENCE ALONG SAID CURVE TO THE LEFT, HAVING A RADIUS OF 65.00 FEET, THROUGH A CENTRAL ANGLE OF 30°11'06" AND BEING SUBTENDED BY A CHORD OF 33.85 FEET AT A BEARING OF S06°32'26"W, FOR AN ARC LENGTH OF 34.24 FEET, TO A POINT OF REVERSE CURVATURE; THENCE ALONG SAID CURVE TO THE RIGHT, HAVING A RADIUS OF 230.00 FEET, THROUGH A CENTRAL ANGLE OF 30°11'06" AND BEING SUBTENDED BY A CHORD OF 119.77 FEET AT A BEARING OF S06°32'26"W, FOR AN ARC LENGTH OF 121.17 FEET; THENCE RUN S21°32'03"W FOR A DISTANCE OF 238.21 FEET; THENCE RUN S61°59'14"E FOR A DISTANCE OF 37.89 FEET, TO THE BEGINNING OF A TANGENTIAL CIRCULAR CURVE; THENCE ALONG SAID CURVE TO THE LEFT, HAVING A RADIUS OF 52.50 FEET, THROUGH A CENTRAL ANGLE OF 54°38'43" AND BEING SUBTENDED BY A CHORD OF 48.20 FEET AT A BEARING OF S89°18'35"E, FOR AN ARC LENGTH OF 50.07 FEET, TO A POINT OF REVERSE CURVATURE; THENCE ALONG SAID CURVE TO THE RIGHT, HAVING A RADIUS OF 102.50 FEET, THROUGH A CENTRAL ANGLE OF 135°41'08" AND BEING SUBTENDED BY A CHORD OF 189.86 FEET AT A BEARING OF S48°47'22"E, FOR AN ARC LENGTH OF 242.74 FEET, TO A POINT OF REVERSE CURVATURE; THENCE ALONG SAID CURVE TO THE LEFT, HAVING A RADIUS OF 17.50 FEET, THROUGH A CENTRAL ANGLE OF 81°02'25" AND BEING SUBTENDED BY A CHORD OF 22.74 FEET AT A BEARING OF S21°28'01"E, FOR AN ARC LENGTH OF 24.75 FEET; THENCE RUN S61°59'14"E FOR A DISTANCE OF 75.11 FEET, TO THE BEGINNING OF A TANGENTIAL CIRCULAR CURVE; THENCE ALONG SAID CURVE TO THE LEFT, HAVING A RADIUS OF 12.50 FEET, THROUGH A CENTRAL ANGLE OF 112°17'57" AND BEING SUBTENDED BY A CHORD OF 20.76 FEET AT A BEARING OF N61°51'48"E, FOR AN ARC LENGTH OF 24.50 FEET; THENCE RUN N05°42'49"E FOR A DISTANCE OF 16.93 FEET, TO THE BEGINNING OF A TANGENTIAL CIRCULAR CURVE; THENCE ALONG SAID CURVE TO THE RIGHT, HAVING A RADIUS OF 37.50 FEET, THROUGH A CENTRAL ANGLE OF 93°04'05" AND BEING SUBTENDED BY A CHORD OF 54.43 FEET AT A BEARING OF N52°14'52"E, FOR AN ARC LENGTH OF 60.91 FEET; THENCE RUN S81°13'05"E FOR A DISTANCE OF 99.33 FEET; THENCE RUN S08°46'55"W FOR A DISTANCE OF 26.43 FEET; THENCE RUN S85°06'03"E FOR A DISTANCE OF 584.09 FEET; THENCE RUN S88°46'54"E FOR A DISTANCE OF 66.20 FEET; THENCE RUN S77°41'47"E FOR A DISTANCE OF 68.11 FEET; THENCE RUN S84°48'34"E FOR A DISTANCE OF 239.41 FEET; THENCE RUN S00°00'58"W FOR A DISTANCE OF 124.63 FEET; THENCE RUN S83°02'18"E FOR A DISTANCE OF 115.87 FEET; THENCE RUN S00°22'35"E FOR A DISTANCE OF 108.39 FEET, TO THE BEGINNING OF A TANGENTIAL CIRCULAR CURVE; THENCE ALONG SAID CURVE TO THE RIGHT, HAVING A RADIUS OF 70.00 FEET, THROUGH A CENTRAL ANGLE OF 89°54'50" AND BEING SUBTENDED BY A CHORD OF 98.92 FEET AT A BEARING OF S44°34'49"W, FOR AN ARC LENGTH OF 109.85 FEET; THENCE RUN S89°28'55"W FOR A DISTANCE OF 25.42 FEET, TO THE BEGINNING OF A TANGENTIAL CIRCULAR CURVE; THENCE ALONG SAID CURVE TO THE LEFT, HAVING A RADIUS OF 129.96 FEET, THROUGH A CENTRAL ANGLE OF 80°33'19" AND BEING SUBTENDED BY A CHORD OF 168.04 FEET AT A BEARING OF S49°12'16"W, FOR AN ARC LENGTH OF 182.72 FEET, TO A POINT OF REVERSE CURVATURE; THENCE ALONG SAID CURVE TO THE RIGHT, HAVING A RADIUS OF 120.01 FEET, AT A BEARING OF N81°05'50"W THEREFROM, THROUGH A CENTRAL ANGLE OF 100°26'29" AND BEING SUBTENDED BY A CHORD OF 184.46 FEET AT A BEARING OF S59°07'25"W, FOR AN ARC LENGTH OF 210.39 FEET,

* NOT A SURVEY *

DRAWN BY: G.N	DATE: 7/14/2021		950 Encore Way Naples, FL. 34110 Phone: (239) 254-2000 Florida Certificate of Authorization No.1772	LEGAL DESCRIPTION COMMUNITY DEVELOPMENT DISTRICT 2	DRAWING NO. H-1646
SHEET # 5	OF SHEET 7				PROJECT NO. 2021.009
SEC-TWN-RGE: 11,12,13,14,18,24-51S-26,27E					FILE NAME 2021009 CDD2.dwg

TO A POINT OF REVERSE CURVATURE; THENCE ALONG SAID CURVE TO THE LEFT, HAVING A RADIUS OF 304.19 FEET, THROUGH A CENTRAL ANGLE OF 25°25'07" AND BEING SUBTENDED BY A CHORD OF 133.85 FEET AT A BEARING OF N83°21'54"W, FOR AN ARC LENGTH OF 134.95 FEET, TO A POINT OF REVERSE CURVATURE; THENCE ALONG SAID CURVE TO THE RIGHT, HAVING A RADIUS OF 402.41 FEET, THROUGH A CENTRAL ANGLE OF 31°06'58" AND BEING SUBTENDED BY A CHORD OF 215.86 FEET AT A BEARING OF N80°30'59"W, FOR AN ARC LENGTH OF 218.54 FEET, TO A POINT OF REVERSE CURVATURE; THENCE ALONG SAID CURVE TO THE LEFT, HAVING A RADIUS OF 325.00 FEET, AT A BEARING OF S26°06'07"W THEREFROM, THROUGH A CENTRAL ANGLE OF 30°05'59" AND BEING SUBTENDED BY A CHORD OF 168.78 FEET AT A BEARING OF N78°56'52"W, FOR AN ARC LENGTH OF 170.74 FEET, TO A POINT OF REVERSE CURVATURE; THENCE ALONG SAID CURVE TO THE RIGHT, HAVING A RADIUS OF 120.00 FEET, THROUGH A CENTRAL ANGLE OF 12°46'46" AND BEING SUBTENDED BY A CHORD OF 26.71 FEET AT A BEARING OF N87°36'29"W, FOR AN ARC LENGTH OF 26.77 FEET; THENCE RUN N81°13'05"W FOR A DISTANCE OF 160.25 FEET, TO THE BEGINNING OF A NON-TANGENTIAL CIRCULAR CURVE; THENCE ALONG SAID CURVE TO THE RIGHT, HAVING A RADIUS OF 271.68 FEET, AT A BEARING OF N07°59'05"E THEREFROM, THROUGH A CENTRAL ANGLE OF 10°56'29" AND BEING SUBTENDED BY A CHORD OF 51.80 FEET AT A BEARING OF N76°32'40"W, FOR AN ARC LENGTH OF 51.88 FEET; THENCE RUN N71°04'25"W FOR A DISTANCE OF 148.26 FEET, TO THE BEGINNING OF A TANGENTIAL CIRCULAR CURVE; THENCE ALONG SAID CURVE TO THE RIGHT, HAVING A RADIUS OF 140.00 FEET, THROUGH A CENTRAL ANGLE OF 10°52'30" AND BEING SUBTENDED BY A CHORD OF 26.53 FEET AT A BEARING OF N65°38'11"W, FOR AN ARC LENGTH OF 26.57 FEET; THENCE RUN N59°32'59"W FOR A DISTANCE OF 54.85 FEET, TO THE BEGINNING OF A NON-TANGENTIAL CIRCULAR CURVE; THENCE ALONG SAID CURVE TO THE LEFT, HAVING A RADIUS OF 96.23 FEET, AT A BEARING OF S30°22'10"W THEREFROM, THROUGH A CENTRAL ANGLE OF 10°36'19" AND BEING SUBTENDED BY A CHORD OF 17.79 FEET AT A BEARING OF N64°55'59"W, FOR AN ARC LENGTH OF 17.81 FEET; THENCE RUN N68°58'01"W FOR A DISTANCE OF 34.68 FEET, TO THE BEGINNING OF A NON-TANGENTIAL CIRCULAR CURVE; THENCE ALONG SAID CURVE TO THE RIGHT, HAVING A RADIUS OF 140.00 FEET, AT A BEARING OF N20°06'28"E THEREFROM, THROUGH A CENTRAL ANGLE OF 08°48'42" AND BEING SUBTENDED BY A CHORD OF 21.51 FEET AT A BEARING OF N65°29'11"W, FOR AN ARC LENGTH OF 21.53 FEET; THENCE RUN N61°04'50"W FOR A DISTANCE OF 98.96 FEET, TO THE BEGINNING OF A NON-TANGENTIAL CIRCULAR CURVE; THENCE ALONG SAID CURVE TO THE RIGHT, HAVING A RADIUS OF 720.00 FEET, AT A BEARING OF N24°35'48"E THEREFROM, THROUGH A CENTRAL ANGLE OF 12°30'32" AND BEING SUBTENDED BY A CHORD OF 156.88 FEET AT A BEARING OF N59°08'56"W, FOR AN ARC LENGTH OF 157.19 FEET, TO A POINT OF REVERSE CURVATURE; THENCE ALONG SAID CURVE TO THE LEFT, HAVING A RADIUS OF 680.00 FEET, THROUGH A CENTRAL ANGLE OF 08°27'08" AND BEING SUBTENDED BY A CHORD OF 100.22 FEET AT A BEARING OF N57°07'13"W, FOR AN ARC LENGTH OF 100.31 FEET; THENCE RUN N61°20'47"W FOR A DISTANCE OF 407.40 FEET, TO THE BEGINNING OF A TANGENTIAL CIRCULAR CURVE; THENCE ALONG SAID CURVE TO THE LEFT, HAVING A RADIUS OF 30.00 FEET, THROUGH A CENTRAL ANGLE OF 26°22'37" AND BEING SUBTENDED BY A CHORD OF 13.69 FEET AT A BEARING OF N74°32'05"W, FOR AN ARC LENGTH OF 13.81 FEET; THENCE RUN S37°02'54"W FOR A DISTANCE OF 54.58 FEET, TO THE BEGINNING OF A NON-TANGENTIAL CIRCULAR CURVE; THENCE ALONG SAID CURVE TO THE RIGHT, HAVING A RADIUS OF 42.54 FEET, AT A BEARING OF N56°27'12"W THEREFROM, THROUGH A CENTRAL ANGLE OF 93°18'11" AND BEING SUBTENDED BY A CHORD OF 61.87 FEET AT A BEARING OF S80°11'54"W, FOR AN ARC LENGTH OF 69.27 FEET; THENCE RUN N53°09'01"W FOR A DISTANCE OF 119.23 FEET; THENCE RUN S78°20'56"W FOR A DISTANCE OF 65.29 FEET; THENCE RUN N70°14'37"W FOR A DISTANCE OF 40.26 FEET; THENCE RUN N54°22'13"W FOR A DISTANCE OF 64.70 FEET; THENCE RUN N33°21'25"W FOR A DISTANCE OF 23.69 FEET; THENCE RUN N75°12'12"W FOR A DISTANCE OF 33.30 FEET; THENCE RUN N76°51'10"W FOR A DISTANCE OF 26.95 FEET; THENCE RUN S43°37'46"W FOR A DISTANCE OF 161.77 FEET; THENCE RUN N90°00'00"W FOR A DISTANCE OF 26.44 FEET; THENCE RUN N48°41'19"W FOR A DISTANCE OF 62.83 FEET; THENCE RUN N14°21'59"E FOR A DISTANCE OF 47.02 FEET, TO THE BEGINNING OF A NON-TANGENTIAL CIRCULAR CURVE; THENCE ALONG SAID CURVE TO THE LEFT, HAVING A RADIUS OF 98.35 FEET, AT A BEARING OF S50°22'32"W THEREFROM, THROUGH A CENTRAL ANGLE OF 37°51'20" AND BEING SUBTENDED BY A CHORD OF 63.81 FEET AT A BEARING OF N58°33'08"W, FOR AN ARC LENGTH OF 64.98 FEET; THENCE RUN N77°28'48"W FOR A DISTANCE OF 34.63 FEET; THENCE RUN N52°19'34"W FOR A DISTANCE OF 29.83 FEET; THENCE RUN N85°11'14"W FOR A DISTANCE OF 26.94 FEET; THENCE RUN N38°20'00"W FOR A DISTANCE OF 22.50 FEET; THENCE RUN N77°46'28"W FOR A DISTANCE OF 33.45 FEET; THENCE RUN N65°05'58"W FOR A DISTANCE OF 40.53 FEET; THENCE RUN S25°54'37"W FOR A DISTANCE OF 42.30 FEET; THENCE RUN S88°48'27"W FOR A DISTANCE OF 24.84 FEET; THENCE RUN N73°55'13"W FOR A DISTANCE OF 30.71 FEET; THENCE RUN N42°59'31"W FOR A DISTANCE OF 35.20 FEET; THENCE RUN N14°24'37"W FOR A DISTANCE OF 43.32 FEET; THENCE RUN N63°10'35"W FOR A DISTANCE OF 52.78 FEET; THENCE RUN N24°20'06"W FOR A DISTANCE OF 64.72 FEET, TO THE BEGINNING OF A NON-TANGENTIAL CIRCULAR CURVE; THENCE ALONG SAID CURVE TO THE RIGHT, HAVING A RADIUS OF 247.83 FEET, AT A BEARING OF N64°50'30"E THEREFROM, THROUGH A CENTRAL ANGLE OF 16°56'50" AND BEING SUBTENDED BY A CHORD OF 73.04 FEET AT A BEARING OF N16°41'05"W, FOR AN ARC LENGTH OF 73.31 FEET, TO A POINT OF REVERSE CURVATURE; THENCE ALONG SAID CURVE TO THE LEFT, HAVING A RADIUS OF 50.27 FEET, AT A BEARING OF S85°47'21"W THEREFROM, THROUGH A CENTRAL ANGLE OF 69°00'31" AND BEING SUBTENDED BY A CHORD OF 56.95 FEET AT A BEARING OF N38°42'54"W, FOR AN ARC LENGTH OF 60.55 FEET, TO A POINT OF REVERSE CURVATURE; THENCE ALONG SAID CURVE TO THE RIGHT, HAVING A RADIUS OF 31.19 FEET, THROUGH A CENTRAL ANGLE OF 45°24'10" AND BEING SUBTENDED BY A CHORD OF 24.07 FEET AT A BEARING OF N50°31'04"W, FOR AN ARC LENGTH OF 24.71 FEET, TO A POINT OF REVERSE CURVATURE; THENCE ALONG SAID CURVE TO THE LEFT, HAVING A RADIUS OF 75.00 FEET, THROUGH A CENTRAL ANGLE OF 33°51'50" AND BEING SUBTENDED BY A CHORD OF 43.68 FEET AT A BEARING OF N44°44'54"W, FOR AN ARC LENGTH OF 44.33 FEET; THENCE RUN N60°16'17"W FOR A DISTANCE OF 117.36 FEET, TO THE BEGINNING OF A NON-TANGENTIAL CIRCULAR CURVE; THENCE ALONG SAID CURVE TO THE LEFT, HAVING A RADIUS OF 100.00 FEET, AT A BEARING OF S29°24'33"W THEREFROM, THROUGH A CENTRAL ANGLE OF 11°00'45" AND BEING SUBTENDED BY A CHORD OF 19.19 FEET AT A BEARING OF N66°05'49"W, FOR AN ARC LENGTH OF 19.22 FEET, TO A POINT OF REVERSE CURVATURE; THENCE ALONG SAID CURVE TO THE RIGHT, HAVING A RADIUS OF 514.31 FEET, THROUGH A CENTRAL ANGLE OF 14°23'31" AND BEING SUBTENDED BY A CHORD OF 128.85 FEET AT A BEARING OF N64°24'26"W, FOR AN ARC LENGTH OF 129.19 FEET, TO A POINT OF REVERSE CURVATURE; THENCE ALONG SAID CURVE TO THE LEFT, HAVING A RADIUS OF 214.22 FEET, THROUGH A CENTRAL ANGLE OF 27°56'26" AND BEING SUBTENDED BY A CHORD OF 103.43 FEET AT A BEARING OF N71°10'54"W, FOR AN ARC LENGTH OF 104.47 FEET, TO A POINT OF COMPOUND CURVATURE; THENCE ALONG SAID CURVE TO THE LEFT, HAVING A RADIUS OF 50.88 FEET, AT A BEARING OF S05°35'05"W THEREFROM, THROUGH A CENTRAL ANGLE OF 49°55'53" AND BEING SUBTENDED BY A CHORD OF 42.95 FEET AT A BEARING OF S70°37'08"W, FOR AN ARC LENGTH OF 44.34 FEET, TO A POINT OF REVERSE CURVATURE; THENCE ALONG SAID CURVE TO THE RIGHT, HAVING A RADIUS OF 155.35 FEET, AT A BEARING OF N43°17'42"W THEREFROM, THROUGH A CENTRAL ANGLE OF 64°46'17" AND BEING SUBTENDED BY A CHORD OF 166.41 FEET AT A BEARING OF S79°05'27"W, FOR AN ARC LENGTH OF 175.61 FEET, TO A POINT OF COMPOUND CURVATURE; THENCE ALONG SAID CURVE TO THE RIGHT, HAVING A RADIUS OF 52.65 FEET, THROUGH A CENTRAL ANGLE OF 44°41'17" AND BEING SUBTENDED BY A CHORD OF 40.03 FEET AT A BEARING OF N46°10'47"W, FOR AN ARC LENGTH OF 41.06 FEET, TO A POINT OF REVERSE CURVATURE; THENCE ALONG SAID CURVE TO THE LEFT, HAVING A RADIUS OF 43.00 FEET, THROUGH A CENTRAL ANGLE OF 66°41'09" AND BEING SUBTENDED BY A CHORD OF 47.27 FEET AT A BEARING OF N57°10'43"W, FOR AN ARC LENGTH OF 50.05 FEET; THENCE RUN S89°33'28"W FOR A DISTANCE OF 185.48 FEET;

* NOT A SURVEY *

DRAWN BY: G.N	DATE: 7/14/2021
SHEET # 6	OF SHEET 7
SEC-TWN-RGE: 11,12,13,14,18,24-51S-26,27E	



950 Encore Way
Naples, FL 34110
Phone: (239) 254-2000
Florida Certificate of
Authorization No.1772

LEGAL DESCRIPTION

COMMUNITY DEVELOPMENT DISTRICT 2

DRAWING NO. H-1646
PROJECT NO. 2021.009
FILE NAME 2021009 CDD2.dwg

THENCE RUN S00°29'56"E FOR A DISTANCE OF 22.52 FEET; THENCE RUN S30°23'51"W FOR A DISTANCE OF 24.71 FEET; THENCE RUN S65°20'21"W FOR A DISTANCE OF 59.88 FEET; THENCE RUN N79°13'24"W FOR A DISTANCE OF 47.16 FEET; THENCE RUN S69°39'07"W FOR A DISTANCE OF 76.08 FEET; THENCE RUN S77°25'16"W FOR A DISTANCE OF 77.61 FEET; THENCE RUN N86°34'08"W FOR A DISTANCE OF 36.83 FEET; THENCE RUN N69°14'10"W FOR A DISTANCE OF 32.78 FEET; THENCE RUN S77°40'12"W FOR A DISTANCE OF 46.94 FEET, TO THE BEGINNING OF A TANGENTIAL CIRCULAR CURVE; THENCE ALONG SAID CURVE TO THE RIGHT, HAVING A RADIUS OF 120.00 FEET, THROUGH A CENTRAL ANGLE OF 11°00'24" AND BEING SUBTENDED BY A CHORD OF 23.02 FEET AT A BEARING OF S83°10'24"W, FOR AN ARC LENGTH OF 23.05 FEET, TO A POINT OF REVERSE CURVATURE; THENCE ALONG SAID CURVE TO THE LEFT, HAVING A RADIUS OF 542.06 FEET, AT A BEARING OF S08°06'49"E THEREFROM, THROUGH A CENTRAL ANGLE OF 09°54'40" AND BEING SUBTENDED BY A CHORD OF 93.65 FEET AT A BEARING OF S76°55'52"W, FOR AN ARC LENGTH OF 93.77 FEET, TO A POINT OF REVERSE CURVATURE; THENCE ALONG SAID CURVE TO THE RIGHT, HAVING A RADIUS OF 120.00 FEET, AT A BEARING OF N19°43'47"W THEREFROM, THROUGH A CENTRAL ANGLE OF 07°23'59" AND BEING SUBTENDED BY A CHORD OF 15.49 FEET AT A BEARING OF S73°58'13"W, FOR AN ARC LENGTH OF 15.50 FEET; THENCE RUN S77°40'12"W FOR A DISTANCE OF 633.48 FEET, TO THE BEGINNING OF A TANGENTIAL CIRCULAR CURVE; THENCE ALONG SAID CURVE TO THE RIGHT, HAVING A RADIUS OF 70.00 FEET, THROUGH A CENTRAL ANGLE OF 21°47'12" AND BEING SUBTENDED BY A CHORD OF 26.46 FEET AT A BEARING OF S88°33'48"W, FOR AN ARC LENGTH OF 26.62 FEET; THENCE RUN S77°40'12"W FOR A DISTANCE OF 242.08 FEET; THENCE RUN S63°50'35"W FOR A DISTANCE OF 105.72 FEET; THENCE RUN S53°26'00"W FOR A DISTANCE OF 22.75 FEET; THENCE RUN N55°15'12"W FOR A DISTANCE OF 106.68 FEET; THENCE RUN N45°28'07"W FOR A DISTANCE OF 39.52 FEET, TO THE BEGINNING OF A NON-TANGENTIAL CIRCULAR CURVE; THENCE ALONG SAID CURVE TO THE LEFT, HAVING A RADIUS OF 399.42 FEET, AT A BEARING OF N48°07'24"W THEREFROM, THROUGH A CENTRAL ANGLE OF 16°56'44" AND BEING SUBTENDED BY A CHORD OF 117.70 FEET AT A BEARING OF N33°24'14"E, FOR AN ARC LENGTH OF 118.13 FEET, TO A POINT OF COMPOUND CURVATURE; THENCE ALONG SAID CURVE TO THE LEFT, HAVING A RADIUS OF 3855.60 FEET, THROUGH A CENTRAL ANGLE OF 01°18'19" AND BEING SUBTENDED BY A CHORD OF 87.84 FEET AT A BEARING OF N24°16'42"E, FOR AN ARC LENGTH OF 87.84 FEET; THENCE RUN N28°56'05"E FOR A DISTANCE OF 24.08 FEET; THENCE RUN N59°52'05"W FOR A DISTANCE OF 16.74 FEET, TO THE BEGINNING OF A NON-TANGENTIAL CIRCULAR CURVE; THENCE ALONG SAID CURVE TO THE LEFT, HAVING A RADIUS OF 132.52 FEET, AT A BEARING OF N58°18'58"W THEREFROM, THROUGH A CENTRAL ANGLE OF 69°03'49" AND BEING SUBTENDED BY A CHORD OF 150.24 FEET AT A BEARING OF N02°50'53"W, FOR AN ARC LENGTH OF 159.74 FEET, TO A POINT OF COMPOUND CURVATURE; THENCE ALONG SAID CURVE TO THE LEFT, HAVING A RADIUS OF 25.00 FEET, AT A BEARING OF N52°51'14"E THEREFROM, THROUGH A CENTRAL ANGLE OF 103°08'09" AND BEING SUBTENDED BY A CHORD OF 39.17 FEET AT A BEARING OF S88°42'50"E, FOR AN ARC LENGTH OF 45.00 FEET; THENCE RUN N41°40'21"E FOR A DISTANCE OF 33.12 FEET; THENCE RUN N47°08'59"E FOR A DISTANCE OF 48.64 FEET, TO THE BEGINNING OF A NON-TANGENTIAL CIRCULAR CURVE; THENCE ALONG SAID CURVE TO THE RIGHT, HAVING A RADIUS OF 1256.70 FEET, AT A BEARING OF S28°09'43"E THEREFROM, THROUGH A CENTRAL ANGLE OF 09°17'06" AND BEING SUBTENDED BY A CHORD OF 203.43 FEET AT A BEARING OF N66°28'50"E, FOR AN ARC LENGTH OF 203.65 FEET; THENCE RUN N00°25'53"W FOR A DISTANCE OF 2378.44 FEET; THENCE RUN N26°57'22"W FOR A DISTANCE OF 100.00 FEET, TO THE BEGINNING OF A NON-TANGENTIAL CIRCULAR CURVE; THENCE ALONG SAID CURVE TO THE RIGHT, HAVING A RADIUS OF 708.91 FEET, AT A BEARING OF N26°58'01"W THEREFROM, THROUGH A CENTRAL ANGLE OF 15°25'19" AND BEING SUBTENDED BY A CHORD OF 190.23 FEET AT A BEARING OF S70°44'39"W, FOR AN ARC LENGTH OF 190.81 FEET; THENCE RUN N00°25'37"W FOR A DISTANCE OF 495.65 FEET; THENCE RUN N88°20'43"W FOR A DISTANCE OF 693.91 FEET; THENCE RUN N52°51'27"W FOR A DISTANCE OF 171.83 FEET; THENCE RUN S37°08'33"W FOR A DISTANCE OF 122.51 FEET; THENCE RUN N88°20'43"W FOR A DISTANCE OF 2557.48 FEET; THENCE RUN N00°02'26"E FOR A DISTANCE OF 1389.71 FEET; THENCE RUN N88°05'43"W FOR A DISTANCE OF 590.35 FEET; THENCE RUN N01°43'02"E FOR A DISTANCE OF 1493.79 FEET; THENCE RUN S88°09'55"E FOR A DISTANCE OF 1274.00 FEET; THENCE RUN S88°09'46"E FOR A DISTANCE OF 1374.52 FEET; THENCE RUN N01°13'54"E FOR A DISTANCE OF 1860.10 FEET; THENCE RUN S88°46'12"E FOR A DISTANCE OF 518.33 FEET, TO THE BEGINNING OF A NON-TANGENTIAL CIRCULAR CURVE; THENCE ALONG SAID CURVE TO THE RIGHT, HAVING A RADIUS OF 350.00 FEET, AT A BEARING OF N88°32'40"E THEREFROM, THROUGH A CENTRAL ANGLE OF 37°05'11" AND BEING SUBTENDED BY A CHORD OF 222.61 FEET AT A BEARING OF N17°05'16"E, FOR AN ARC LENGTH OF 226.55 FEET; THENCE RUN N35°37'51"E FOR A DISTANCE OF 214.87 FEET; THENCE RUN S54°21'53"E FOR A DISTANCE OF 807.97 FEET; THENCE RUN S01°00'06"W FOR A DISTANCE OF 3308.61 FEET, TO THE POINT OF BEGINNING. CONTAINING 898.51 ACRES, MORE OR LESS.

BEARINGS REFER TO THE NORTH LINE OF SECTION 13, TOWNSHIP 51 SOUTH, RANGE 26 EAST, AS BEING S89°55'46"E.

LESS AND EXCEPT:

A PARCEL OF LAND LOCATED IN A PORTION OF SECTION 14, TOWNSHIP 51 SOUTH, RANGE 26 EAST, COLLIER COUNTY, FLORIDA, BEING MORE PARTICULARLY DESCRIBED AS FOLLOWS:

THE NORTHEAST 1/4 OF THE NORTHEAST 1/4 OF THE NORTHEAST 1/4 OF SECTION 14, TOWNSHIP 51 SOUTH, RANGE 26 EAST, COLLIER COUNTY, FLORIDA, CONTAINING 10.91 ACRES, MORE OR LESS.

TOTAL DESCRIBED AREA = 887.60 ACRES, MORE OR LESS.

HOLE MONTES, INC.
CERTIFICATE OF AUTHORIZATION NUMBER LB 1772



BY

Thomas M. Murphy

Digitally signed by Tom Murphy
DN: cn=Tom Murphy, o=Hole Montes Inc., ou, email=tommurphy@hmgeng.com, c=US
Date: 2022.02.01 11:36:22 -05'00'

THOMAS M. MURPHY

LS5628
STATE OF FLORIDA

* NOT A SURVEY *

DRAWN BY: G.N	DATE: 7/14/2021
SHEET # 7	OF SHEET 7
SEC-TWN-RGE: 11,12,13,14,18,24-51S-26,27E	



950 Encore Way
Naples, FL. 34110
Phone: (239) 254-2000
Florida Certificate of
Authorization No.1772

LEGAL DESCRIPTION
COMMUNITY DEVELOPMENT DISTRICT 2

DRAWING NO. H-1646
PROJECT NO. 2021.009
FILE NAME 2021009 CDD2.dwg



FLORIDA DEPARTMENT *of* STATE

RON DESANTIS
Governor

LAUREL M. LEE
Secretary of State

March 30, 2022

Ms. Martha S. Vergara, BMR & VAB Senior Deputy Clerk
Office of the Clerk of the Circuit Court
& Comptroller of Collier County
3329 Tamiami Trail E, Suite #401
Naples, Florida 34112

Dear Ms. Vergara:

Pursuant to the provisions of Section 125.66, Florida Statutes, this will acknowledge receipt of your electronic copy of Collier County Ordinance No. 22-09, which was filed in this office on March 28, 2022.

Sincerely,

Anya Owens
Program Administrator

AO/lb