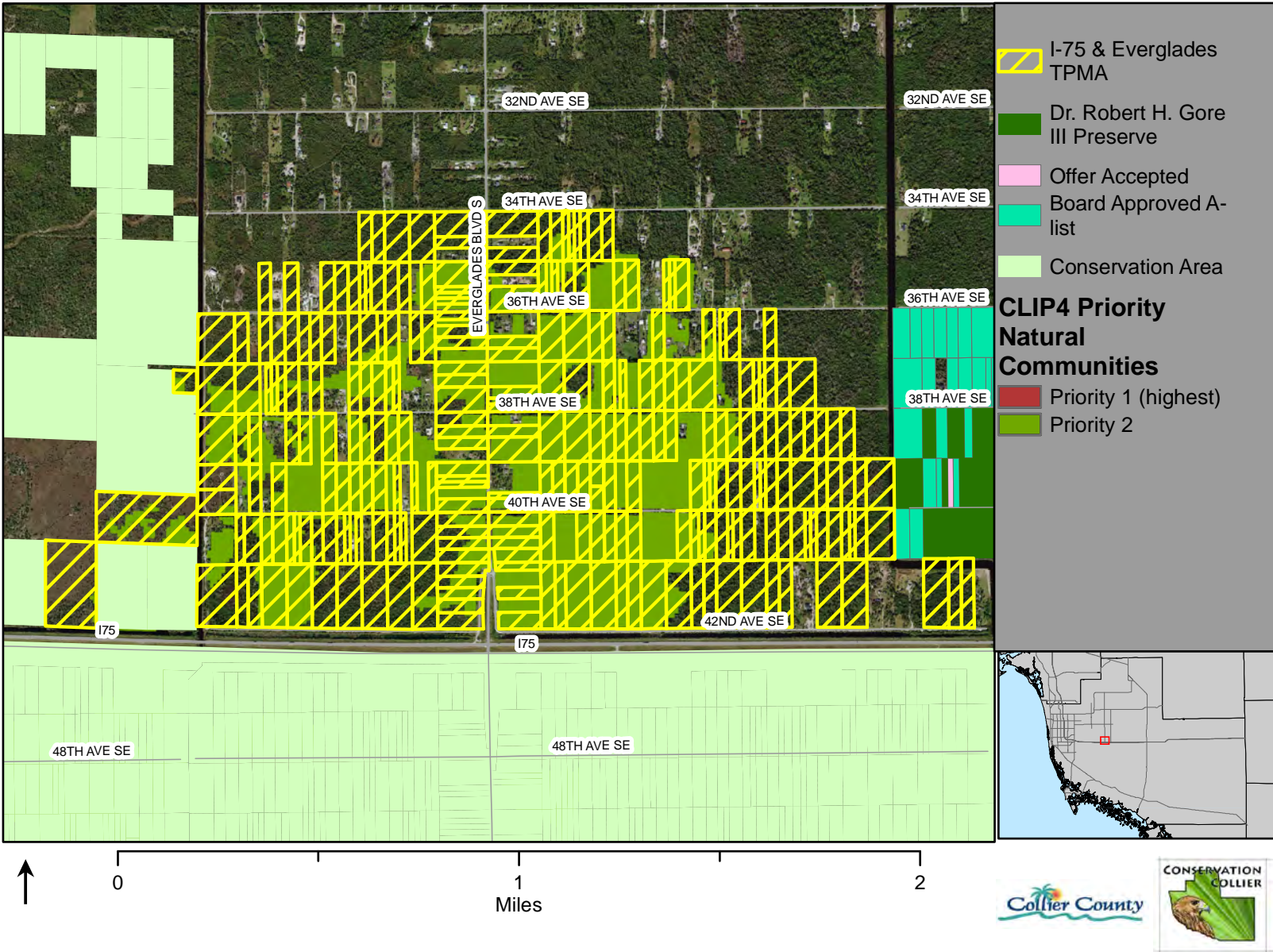
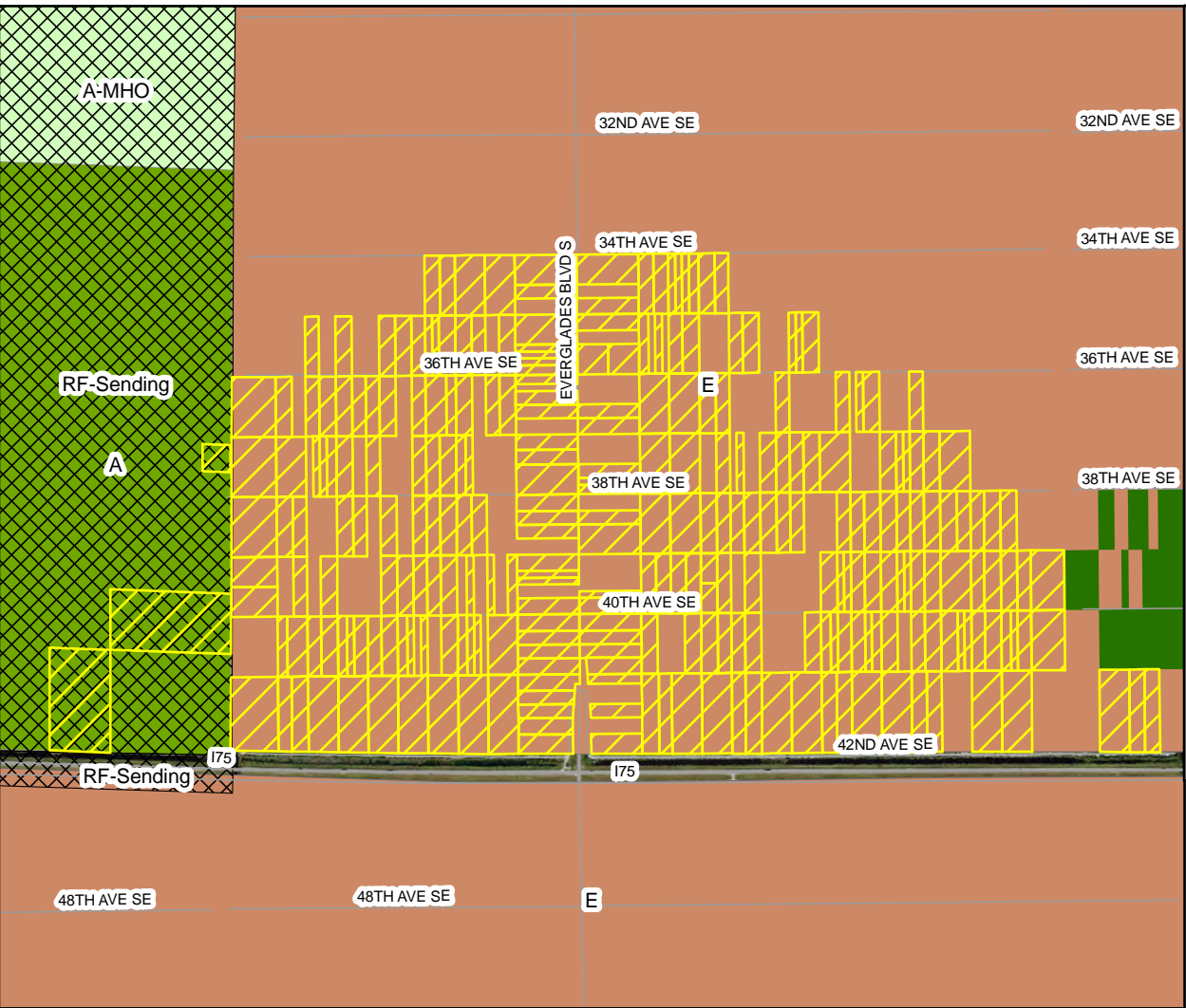








CONSERVATION COLLIER PROPOSED I-75  
AND EVERGLADES BLVD. CYCLE 12  
TARGET PROTECTION AREA

TPMA: I-75 and Everglades Blvd  
 Parcels: 271; Acreage: 791.6; Priority Habitats: Mesic Flatwoods, Hydric Flatwoods



# I-75 and Everglades Blvd TPMA Zoning



-  I-75 & Everglades TPMA
  -  Dr. Robert H. Gore III Preserve
  -  RF-Sending
- Zoning**
-  A
  -  A-MHO
  -  E

