

WILSON BLVD Extension Corridor Study

PURPOSE

Identify preferred corridor alignment and specifications to connect Golden Gate Blvd E and Collier Blvd for improved:

- Access between neighborhoods/destinations 
- Road network connectivity 
- Emergency response times 

Study will

- Build on 2005 Wilson Blvd Extension Study
- Consider County property in Study Area to facilitate corridor development
- Assess environmental impacts, land use and funding/implementation

PROCESS & TENTATIVE SCHEDULE



Alignment Options: Spring 2021 - Summer 2022.

Public Meeting #1, held 6/27/22
Project introduction; evaluate alignment options



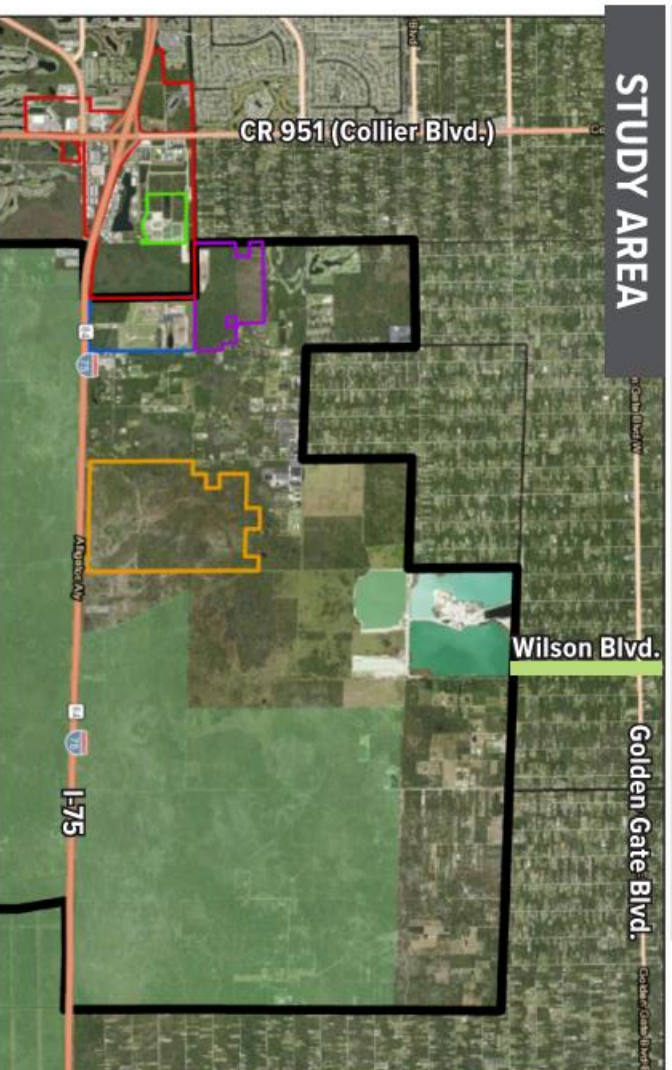
Preferred Alignment, Road Design & Implementation: Summer/Fall 2022

Public Meeting #2, 12/8/22
Evaluate refined alignment options to inform preferred alignment; evaluate road design options



Final Report: Spring 2023

Public Meeting #3 – Board of County Commissioners
Review final conclusions and recommendations



Regulatory Areas of Interest

-  Natural Resource Protection
 -  Rural Fringe Mixed Use District
- ### Parcels of Interest
-  Activity Center #9
 -  Collier County Landfill
 -  Collier County Resource Recovery & Business Park
 -  Sports Complex
 -  County-Owned Parcel

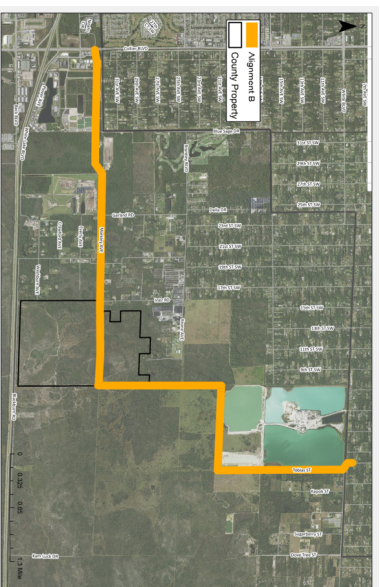
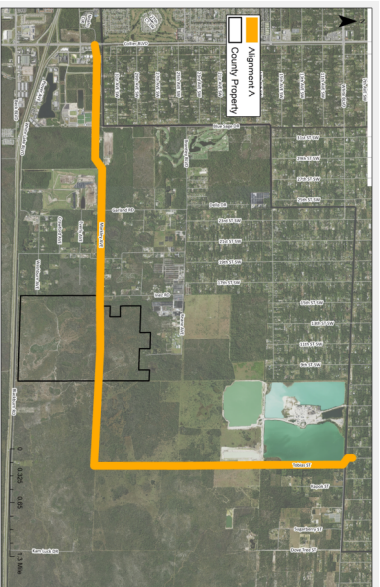
Study Area Boundaries

- CR 951 (Collier Blvd)
- Golden Gate Blvd
- Everglades Blvd
- I-75

Public Information Meeting #2 Update

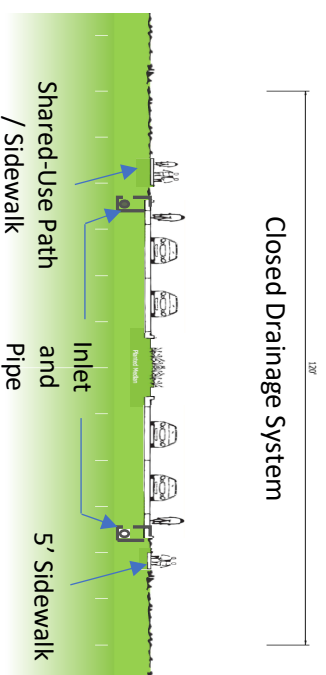
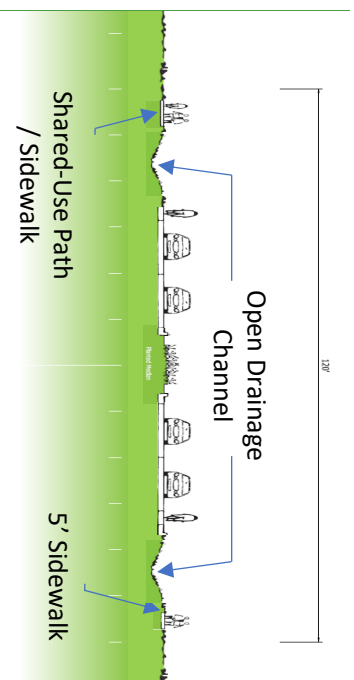
Has a preferred alignment been identified for the extension of Wilson Boulevard?

The project team reviewed alignment preferences gathered during and following Public Information Meeting #1, held 6/27/22, along with comments from additional stakeholders in the area. The team also completed additional land use, environmental, and transportation planning analysis on alignment options. The project team proposes the following refined alignment options to respond to this information, including comments on avoiding the Natural Resource Protection Area boundary and minimizing division of panther habitat. These options will provide the basis to move towards a preferred alignment option for the final report:



Is there a preliminary design of the roadway?

Based on current travel estimates for the future, a two-lane roadway with option to expand to four lanes later, if needed, is expected to meet travel needs. The design could be more suburban or rural in style, with adjustments in lighting, landscaping, sidewalks, pathways, and drainage types. Examples of suburban and rural designs are illustrated below:



What are the next steps?

The project team will gather comments on these alignment and options to determine a preferred alignment and concept to document in the final report. This report will also include approaches to fund and implement the project. The team will present the draft final report at a Board of County Commissioners meeting tentatively scheduled for March 2023.

Where can I get more information?

Scan the QR code to the right to access the Transportation Planning Project and Studies page and click on “Current - Wilson Blvd. Extension Corridor Study” under current projects. Still have questions? Contact Lorraine Lantz at Lorraine.Lantz@colliercountyfl.gov or (239) 252-5779.

