

# Wilson Boulevard Extension Corridor Study

Public Information Meeting #2  
December 8, 2022



# Welcome and Introductions

# Agenda

---

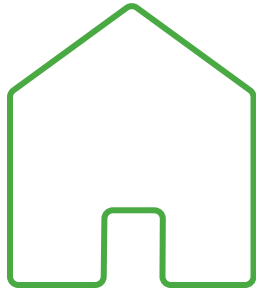
- Welcome and Introductions
- Study Overview & Purpose
- Review Public Information Meeting # 1 Summary
- Present Refined Alignment & Concept Options
- Discuss Next Steps & Open House Format (continued participation)

# Study Overview & Purpose

# Study Purpose and Need

---

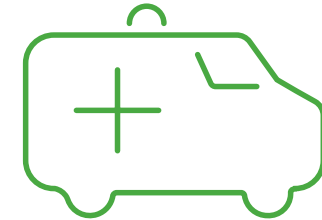
Identify preferred corridor alignment and specifications to connect Golden Blvd E and Collier Blvd for improved:



Access between neighborhoods/destinations



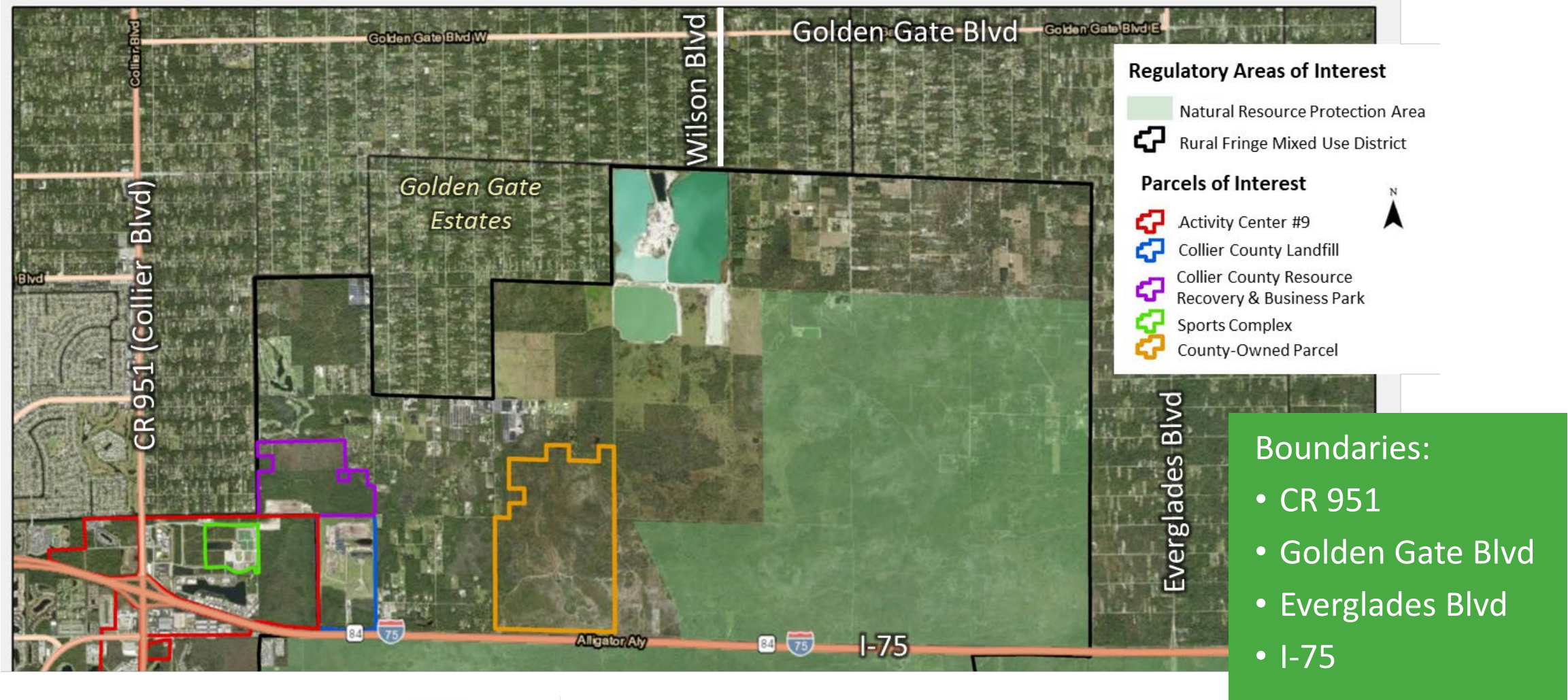
Road network connectivity



Emergency response times

- Build on 2005 Wilson Blvd Extension Study
- Consider County property in Study Area to facilitate corridor development
- Assess environmental impacts, land use and funding/implementation

# General Study Area



# Process & Tentative Schedule

We are here



**Alignment Options**  
**Spring '21 - Summer '22**

Public Meeting #1, held  
6/27/22

Project introduction; evaluate  
alignment options



**Preferred Alignment, Road  
Design & Implementation**  
**Summer/Fall '22**

Public Meeting #2, 12/8/22  
Evaluate refined alignment  
options to inform preferred  
alignment; evaluate road  
design options



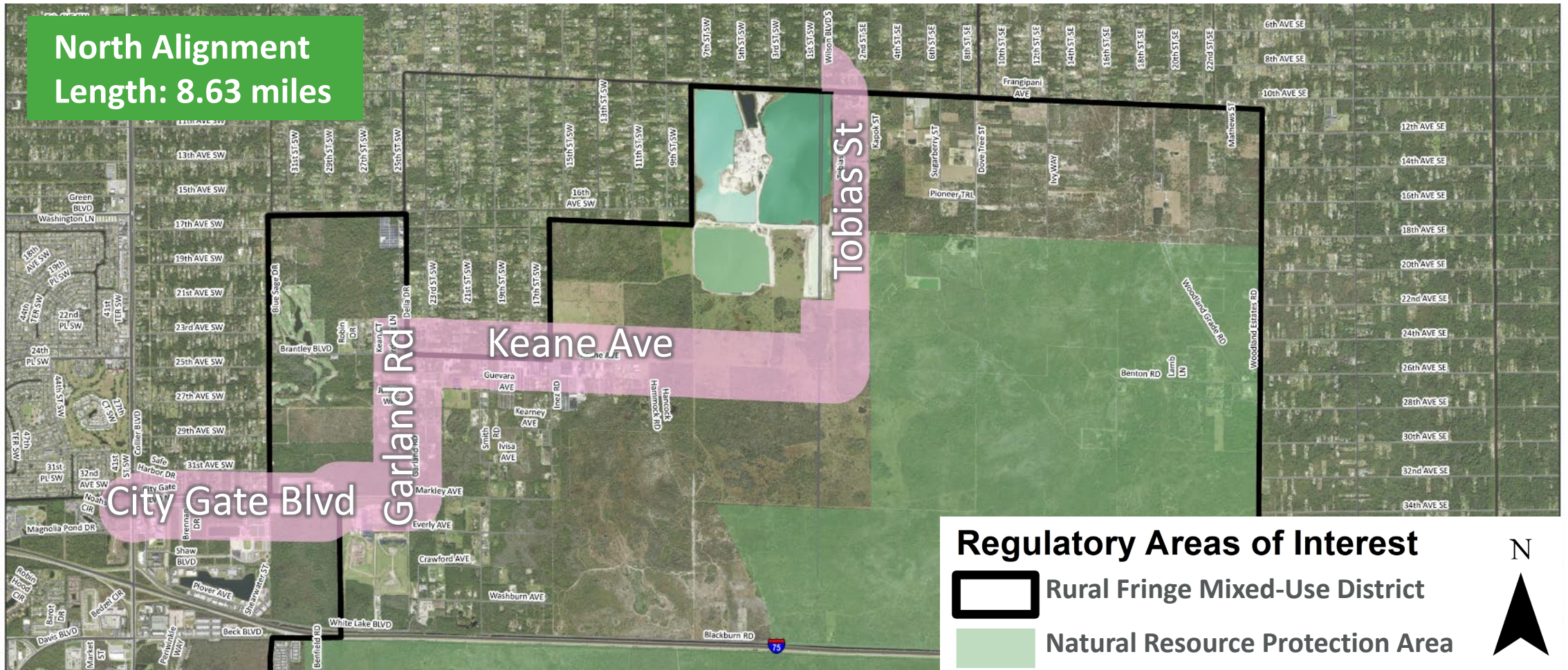
**Final Report**  
**Spring '23**

Public Meeting #3 –Board of  
County Commissioners  
Review final conclusions and  
recommendations

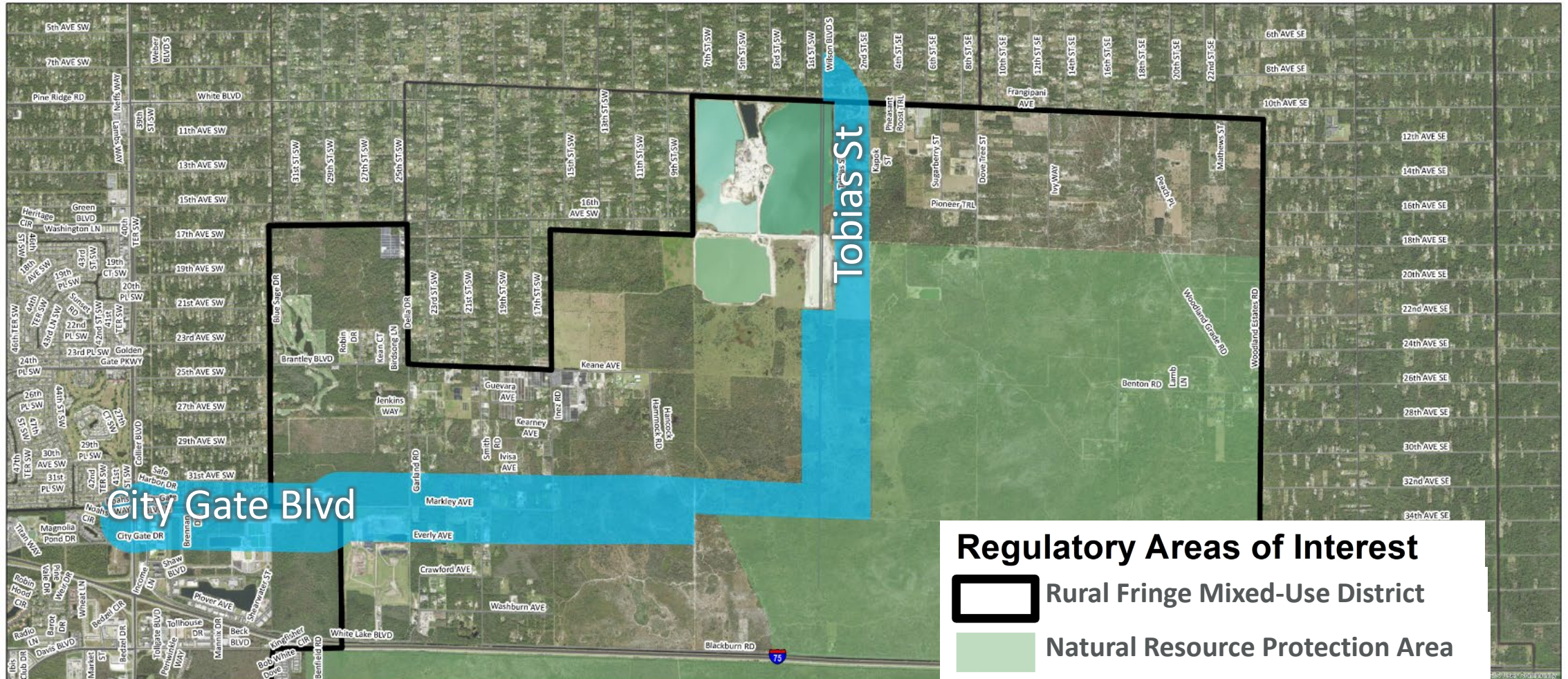
# Review Public Information Meeting # 1 Summary



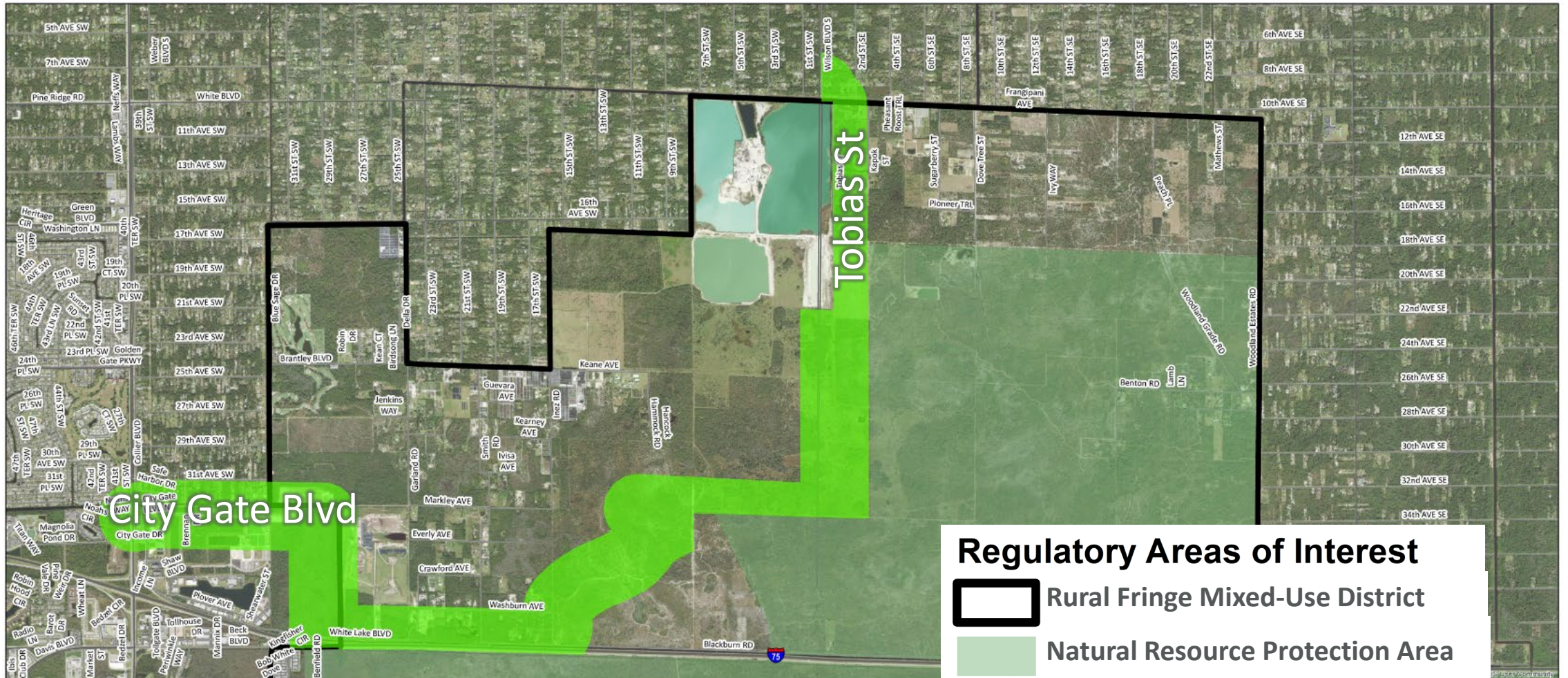
# Preliminary Alignment Options



# Preliminary Alignment Options



# Preliminary Alignment Options



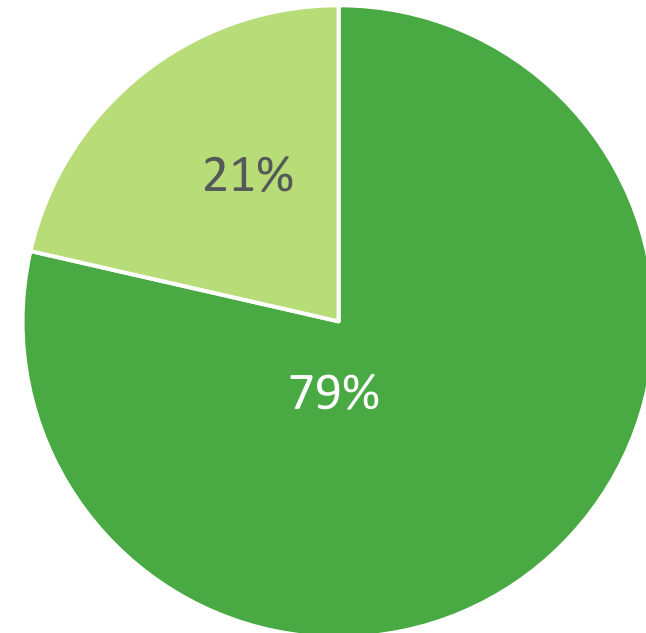
# Meeting #1 Survey: Alignment Preference Results

Alignment preference questions:

- Rank 3 alignment options
- Option to draw a different alignment

Total survey takers: 28

**Most survey takers provided a preference response.**



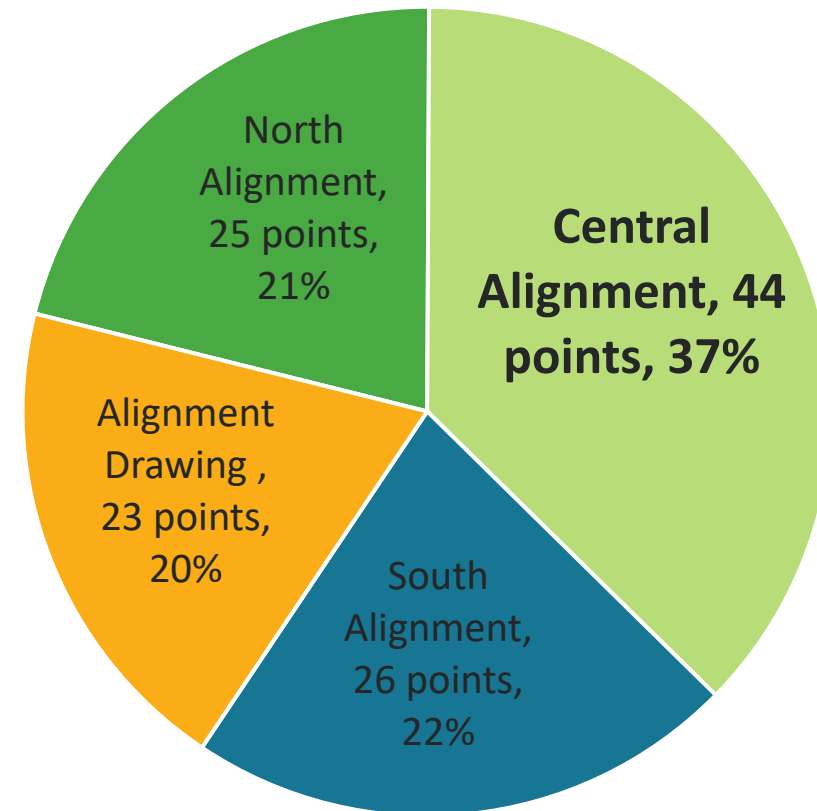
- Alignment Option Selected
- No Alignment Option Selected

# Meeting #1 Survey: Alignment Preference Results

## Ranking Scoring:

- 1<sup>st</sup> rank: 3 pts
- 2<sup>nd</sup> rank: 2 pts
- 3<sup>rd</sup> rank: 1 pt.
- 4<sup>th</sup> or no rank: 0 pts

**Central Alignment scores highest.**



# Meeting #1 Survey: Open Response Comment Summary

Main Comment Themes	Total Respondents
Comments related to environmental concerns of wildlife protection, vegetation, habitat fragmentation	11
Comments related to road nuisance such as increased noise, traffic	6
Comments related to pedestrian and vehicle safety such as sidewalks and speed limits	5
Comments related to pursuing a no build option	4
Comments related to additional traffic on Garland Road	4
Comments related to ROW acquisition	4
Comments related to truck traffic on residential roads	2

# Alignment Comparison

Impact Category for Ranking	North	Central	South
<b>Transportation</b>			
Total Road Miles	2	1	3
Miles of New Road	1	2	3
Miles of Existing Roads	1	2	3
Miles of Private Roads	3	2	1
Miles of Public Roads	1	1	1
Lane Miles Added	1	3	2
Vehicle Miles Traveled	1	2	3
Change in Vehicle Hours Traveled	1	2	3
<b>Community</b>			
Taxable Value	3	1	2
Number of Landowners	3	2	1
Number of Parcels	3	2	1
Number of Working Parcels	3	2	1
Total Built Square Feet	3	1	2
Number of Residential Units	3	2	1
<b>Environmental</b>			
Wetland Impact	1	2	3

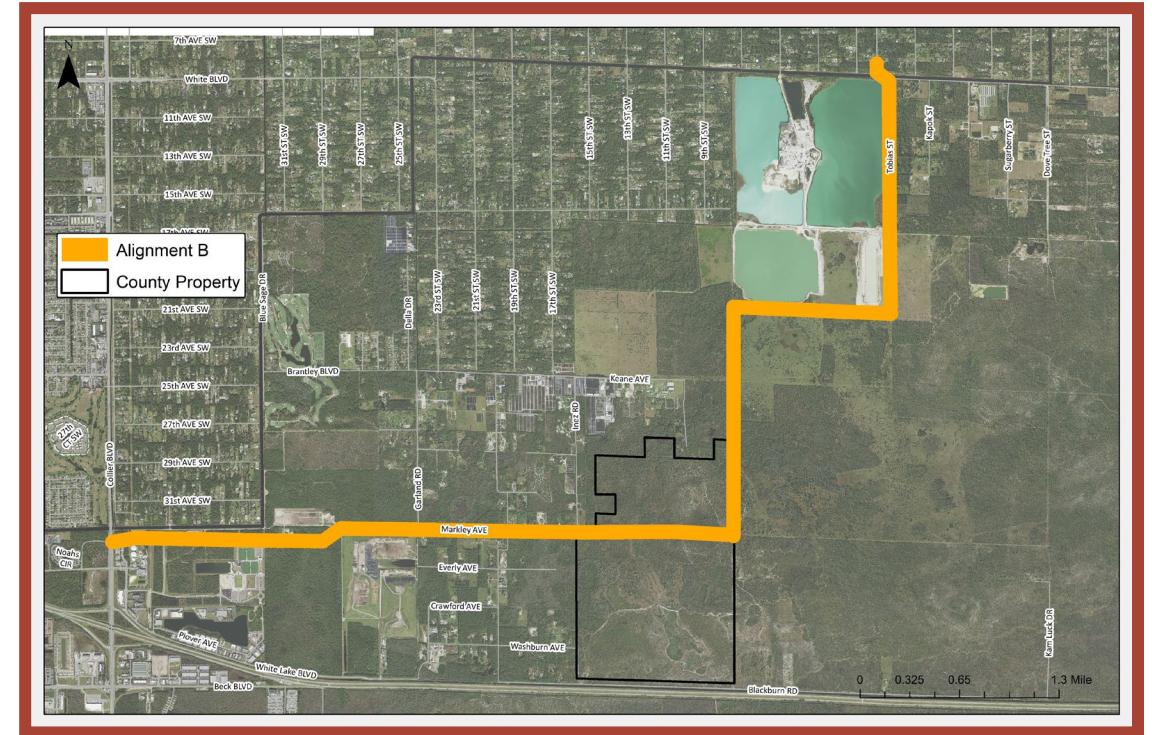
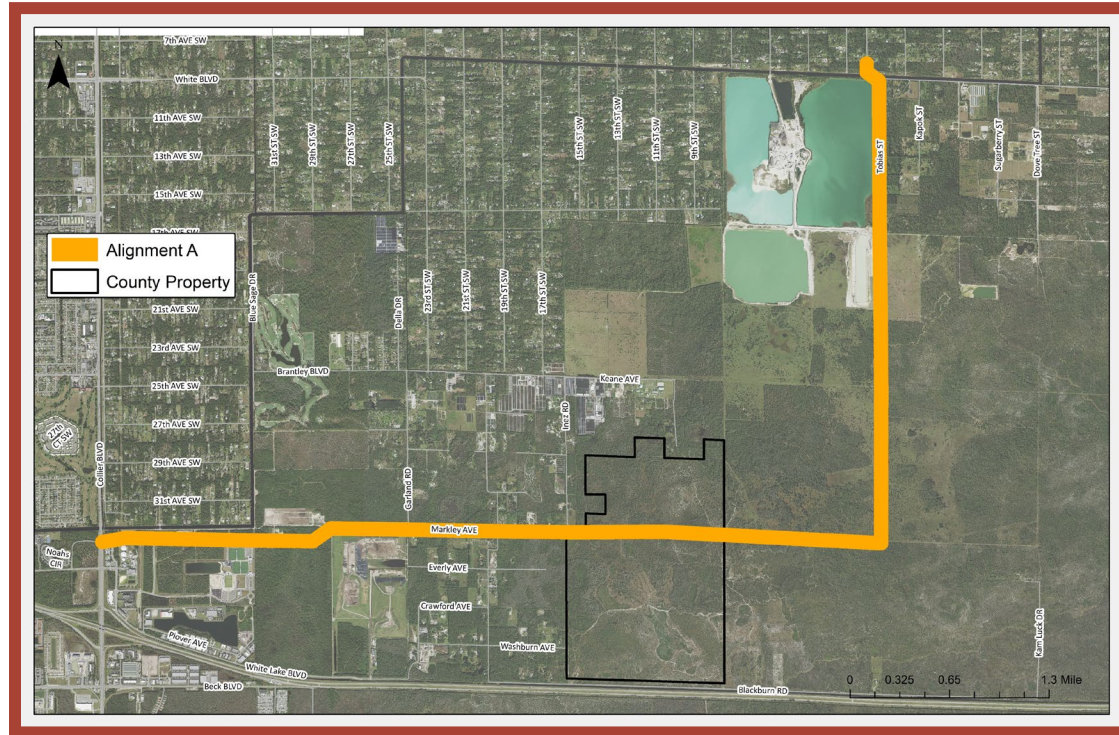
- Fewer impacts/more benefits anticipated with **Central Alignment** relative to the other 2 alignments.
- Aligns with public survey preference.

# Present Refined Alignment & Concept Options

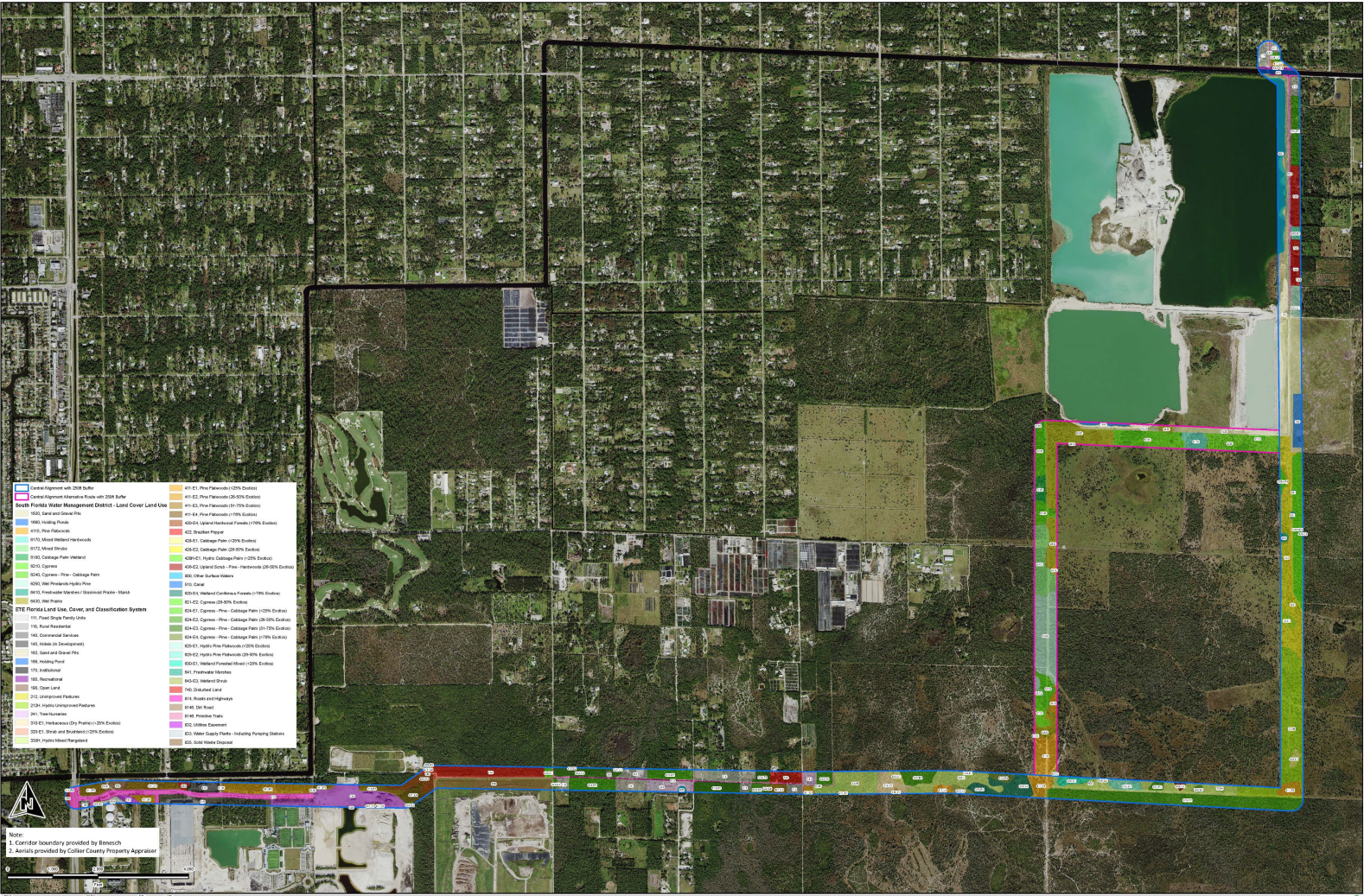


# Refined Alignment Options

- First voting question for input during Open House



# Central Alignment: Ongoing Environmental Analysis



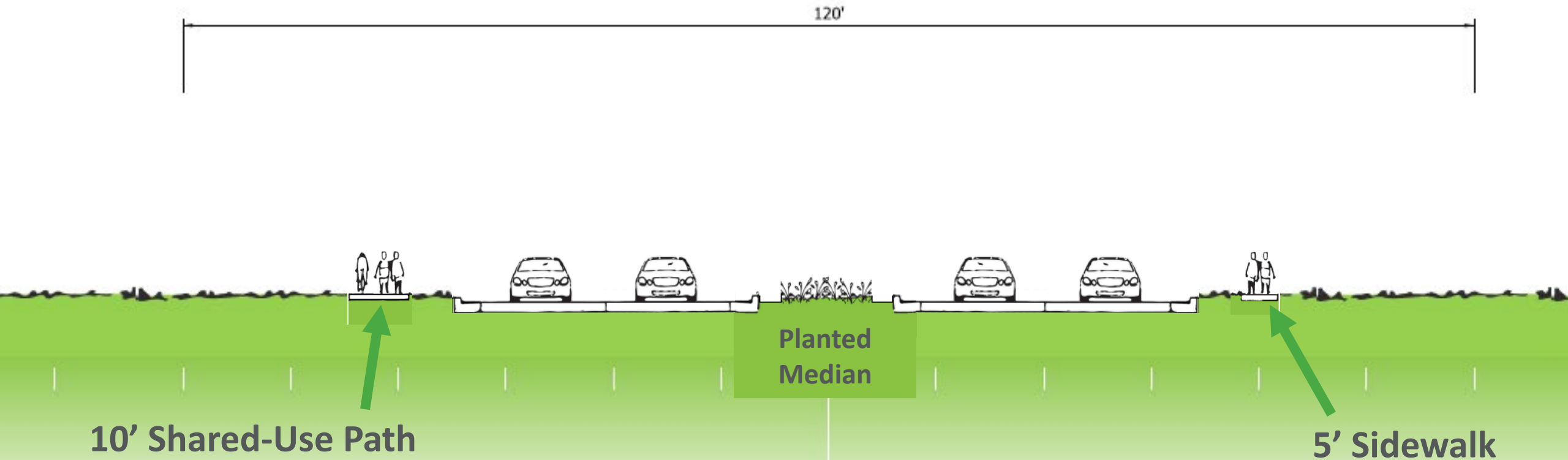
# Central Alignment: Concept Options

- Travel Demand Model Projections support a 2-lane roadway.
- Likely would need to be 4-lanes in the future.

- A** Western connection with City Gate Blvd would extend 4-lane divided section
- B** Center Section would be phased with 2 lanes initially expandable to 4 lanes.
- C** Northern connection with S. Wilson Blvd would be 2 lanes to match existing cross-section.
- C** Consideration for final design of S. Wilson Blvd Bridge

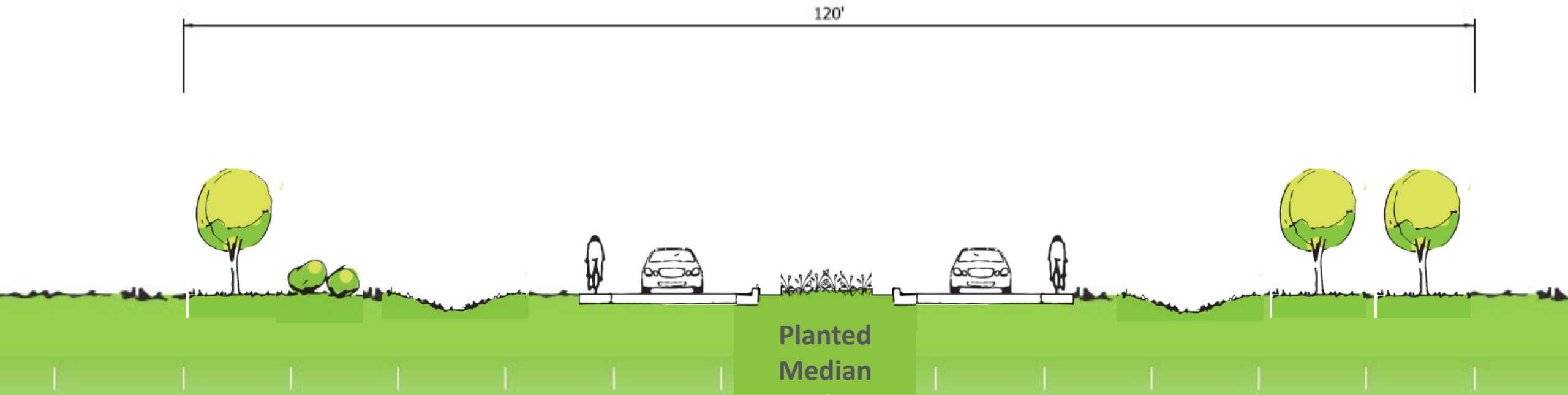


# Central Alignment: Concept Options



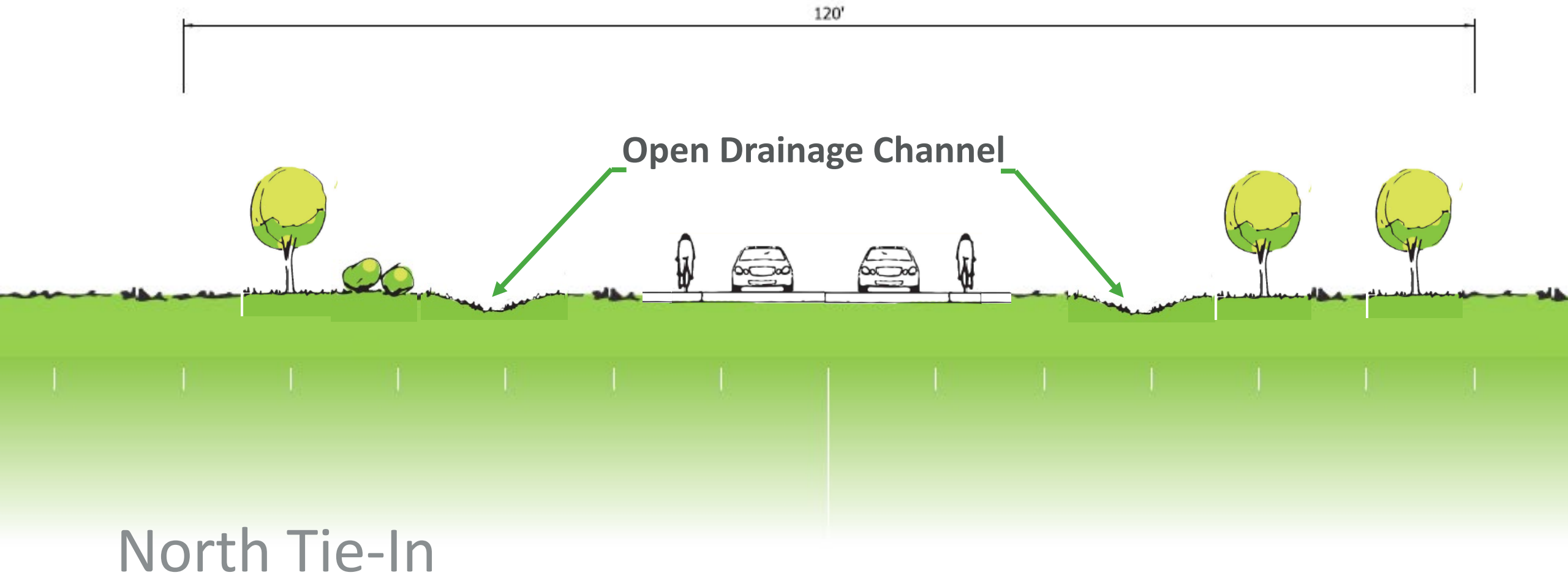
## West Tie-In with City Gate Blvd

# Central Alignment: Concept Options



## *Center Section – Phase 1*

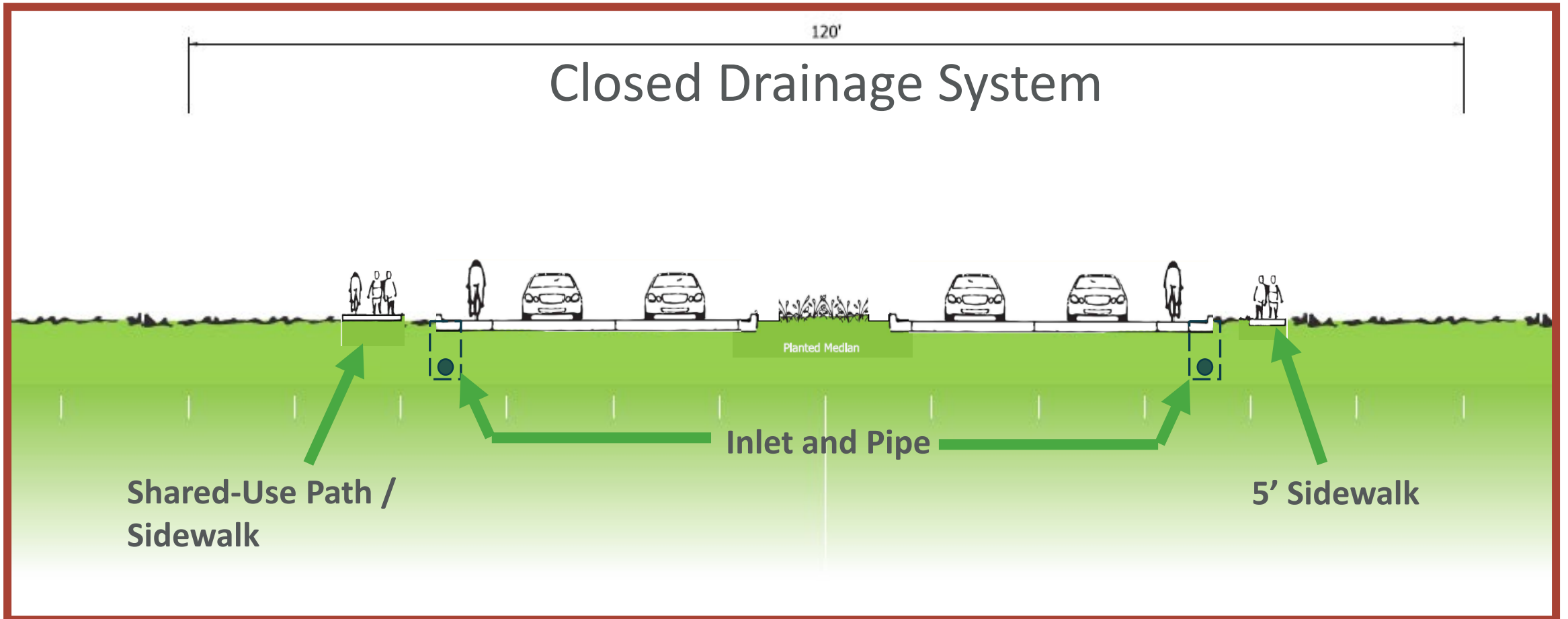
# Central Alignment: Concept Options



## North Tie-In

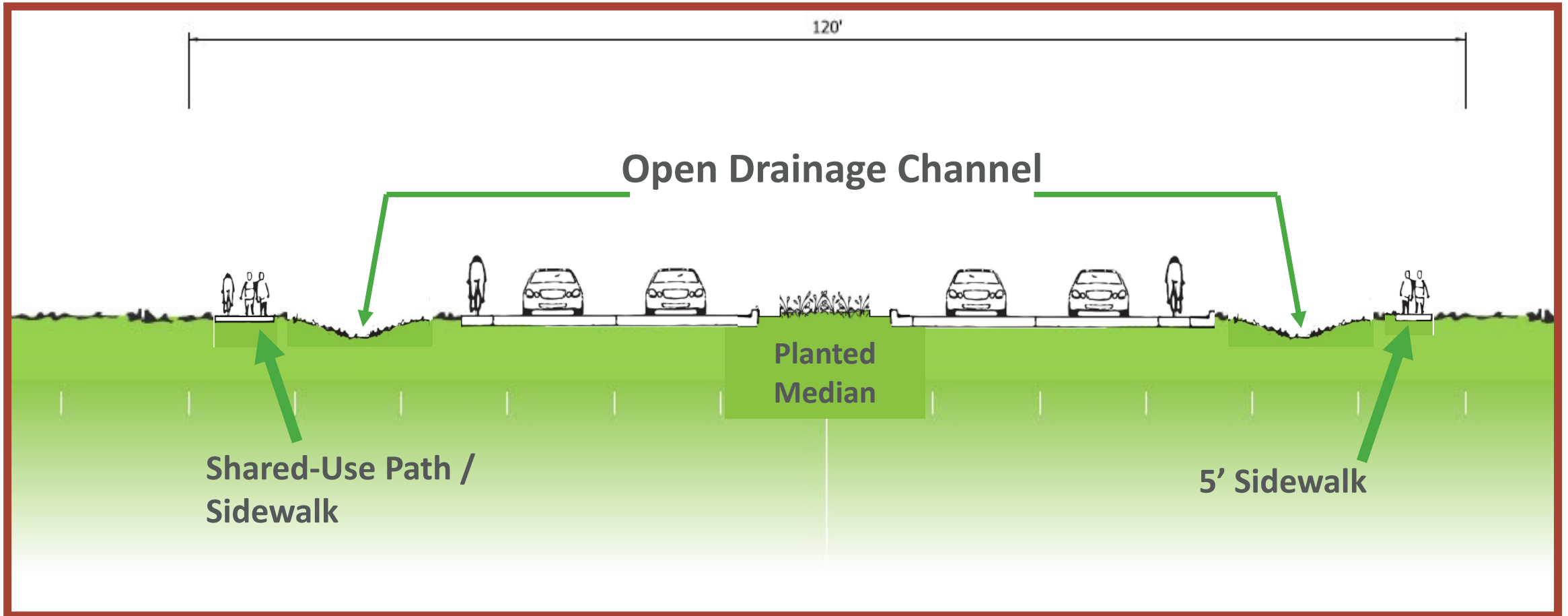
# Roadway Cross-Section Options: Urban vs Rural

- Second voting question for input during Open House



# Roadway Cross-Section Options: Urban vs Rural

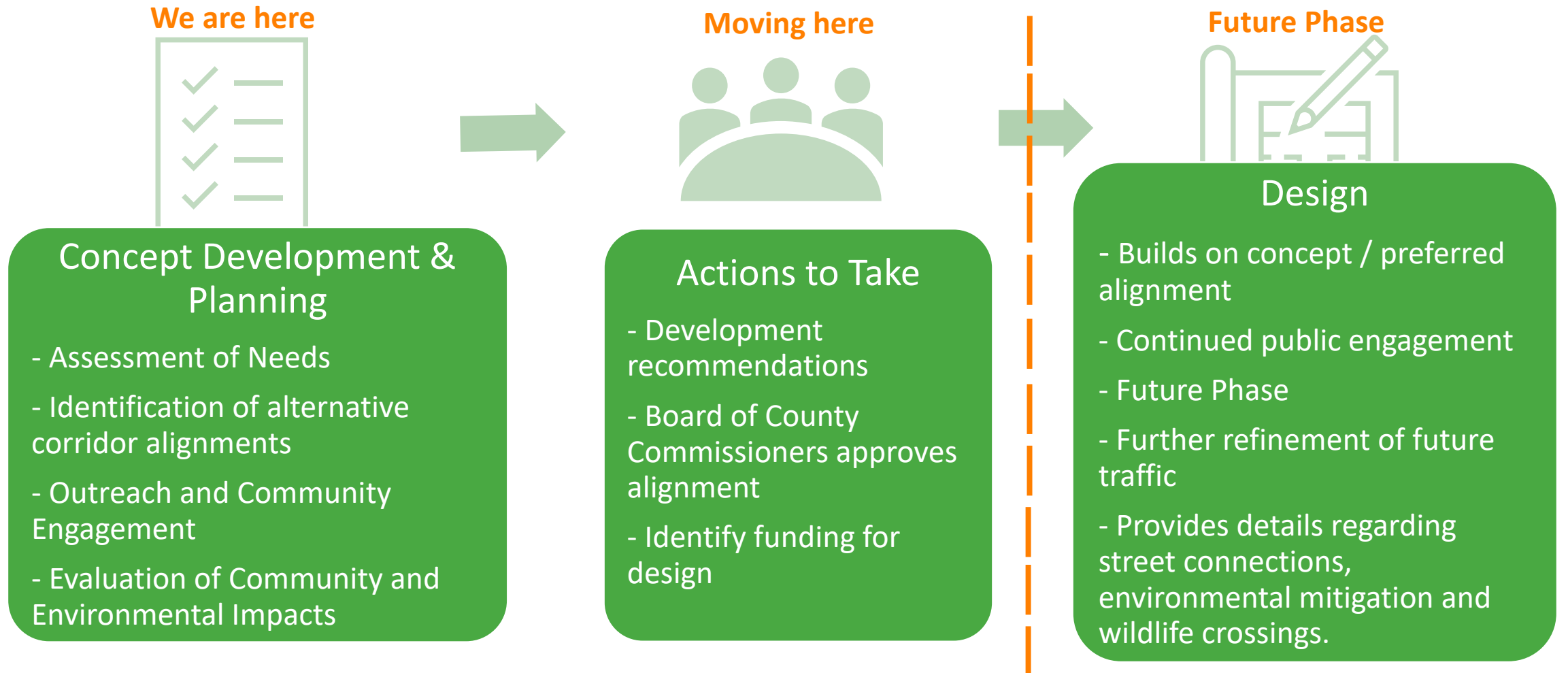
- Second voting question for input during Open House





# Discuss Next Steps & Open House Format

# Next Steps

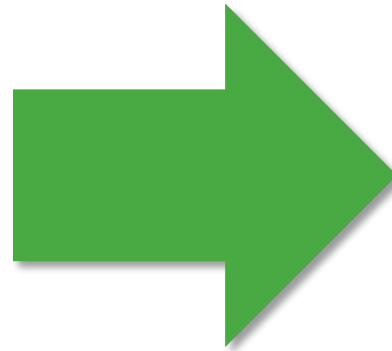


# Next Steps

---

## Tonight's open house:

- Vote on preferred refined alignment, road design features
- Ask staff any additional questions
- Leave additional comments on comment form



## Through Spring 2023, project team will:

- Analyze preferences input
- Document preferred alignment and design
- Document implementation considerations (e.g., funding)
- Present to Board of County Commissioners – regularly scheduled meeting

# Voting Activities

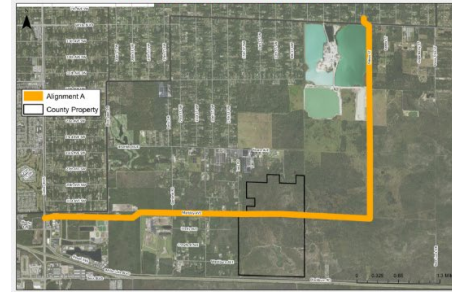
- Two Dot Stickers
  - Received at check-in
  - One sticker per question
- Two Questions
  - Preferred alignment
  - Cross-Section Options

## Wilson Boulevard Extension Corridor Project



**Refined Alignment Options** Please place one (1) sticker by your preferred choice.

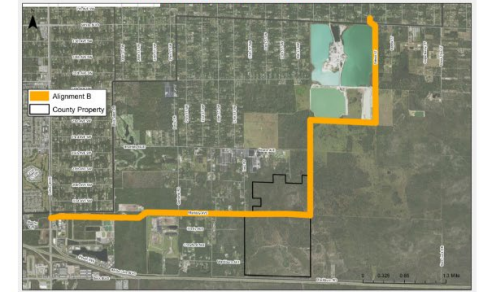
Central Alignment - Option A



Place Option A votes here:



Central Alignment - Option B



Place Option B votes here:



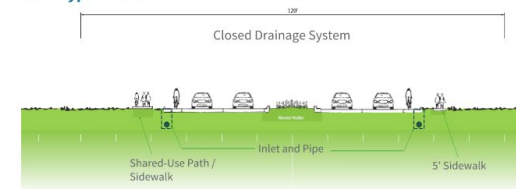
## Wilson Boulevard Extension Corridor Project



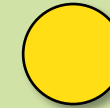
### Urban vs. Rural Roadway Concepts

Please place one (1) sticker by your preferred choice.

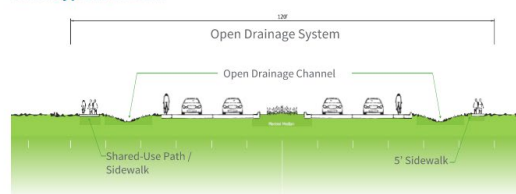
Urban Typical Section



Place Urban Section Votes Here:



Rural Typical Section



Place Rural Section Votes Here:



# Comment Cards

## COMMENT FORM Wilson Boulevard Extension Corridor Study

Public Information Meeting #2 | December 8, 2022, 5-7 p.m. | UF/IFAS Extension | 14700 Immokalee Road | Naples, FL 34120

1. Do you live in the study area (Collier Boulevard to the west, I-75 to the south, Everglades Boulevard to the east, and Golden Gate Boulevard to the north)?  Yes  No
2. Did this meeting provide sufficient information in a sufficient format on the project? If not, what additional information or format could have been provided?  Yes  No

---

---

3. How did you hear about the study?  
 Email  Roadway Message Sign  Word of Mouth  Social Media  
 Other \_\_\_\_\_

Additional Comments (Use the back of this sheet/attach additional sheets if necessary):

---

---

---

---

---

---

---

---

Name \_\_\_\_\_

Email \_\_\_\_\_ Phone \_\_\_\_\_

Address \_\_\_\_\_

City \_\_\_\_\_ State \_\_\_\_\_ Zip Code \_\_\_\_\_

Please be advised: the information on this sheet is to contact you regarding this project and future public meetings. Under Florida law, e-mail addresses, phone numbers and certain home addresses are public records once received by a government agency. If you do not want your e-mail address, phone number or home address released if the county receives a public records request, you can refrain from including such information on this sheet. You have the option of checking with the county staff on your own to obtain updates on the project as well as checking the county website for additional information.

**Place this sheet in the "Comment Box" at tonight's meeting or email comments to Community Liaison, Connie Deane, at [Connie.Deane@colliercountyfl.gov](mailto:Connie.Deane@colliercountyfl.gov) by Thursday, December 22, 2022.**



Discuss Next Steps &  
Open House Format

# Thank You!

**Lorraine M. Lantz, AICP, CPM**

Interim Transportation Planning Manager,  
Collier County

Lorraine.Lantz@colliercountyfl.gov

239-252-5779

**Connie Deane**

Community Liaison, Collier County

Connie.Deane@colliercountyfl.gov

239-252-8365

More info here  
(click "Current -  
Wilson Blvd. Extension  
Corridor Study")

