



Conservation Collier

Preserves Public Access and Amenities Report

Draft presented to Lands Evaluation and Management
Subcommittee

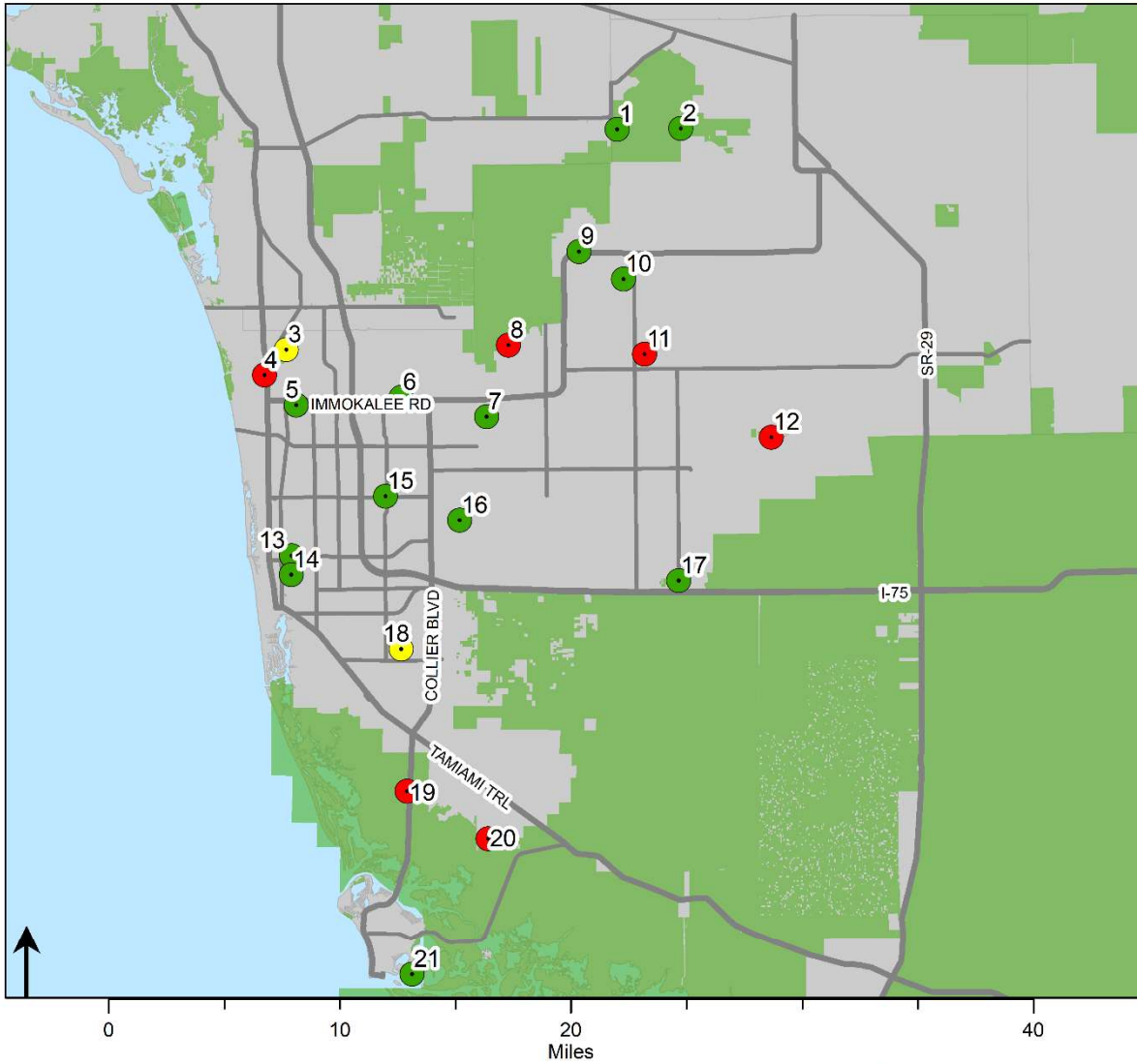
9-19-2022

Table of Contents

Exhibit 1: Map of Conservation Collier Preserves.....	2
Introduction	3
1. Preserves Open to the Public.....	4
Table 1. Preserves Open to Public Access.....	4
Alligator Flag Preserve	5
Caracara Prairie Preserve.....	7
Cocohatchee Creek Preserve	9
Dr. Robert H. Gore III Preserve	11
Freedom Park Preserve.....	13
Gordon River Greenway Preserve.....	15
Logan Woods Preserve	17
Nancy Payton Preserve	19
Otter Mound Preserve	21
Panther Walk Preserve	23
Pepper Ranch Preserve	25
Redroot Preserve	27
Rivers Road Preserve	29
2. Preserves Closed to the Public.....	31
Table 2. Preserves Closed to Public Access.....	31
Railhead Scrub Preserve	32
Rattlesnake Hammock Preserve	34
Red Maple Swamp Preserve	36
Winchester Head Preserve	38
Camp Keais Strand Preserve	40
McIlvane Marsh Preserve	42
Shell Island Preserve	44
Wet Woods Preserve	46
Attachments.....	48
Attachment 1: Preserve Amenities Spreadsheet	48

Exhibit 1: Map of Conservation Collier Preserves

Conservation Collier Preserves 2021



Conservation Collier Preserve Access	
●	Public Access
●	Planned Public Access
●	Resource Protection
	Other Conservation Areas

• 1. Caracara Prairie Preserve - 368 ac	• 10. Panther Walk Preserve - 11 ac
• 2. Pepper Ranch Preserve - 2512 ac	• 11. Winchester Head Preserve - 94 ac
• 3. Railhead Scrub Preserve - 135 ac	• 12. Camp Keais Strand Preserve - 33 ac
• 4. Wet Woods Preserve - 27 ac	• 13. Freedom Park 12.5 ac
• 5. Cocohatchee Creek Preserve - 4 ac	• 14. Gordon River Greenway - 51 ac
• 6. Alligator Flag Preserve 18.5 ac	• 15. Logan Woods Preserve - 7 ac
• 7. Rivers Road Preserve - 77 ac	• 16. Nancy Payton Preserve - 71 ac
• 8. Red Maple Swamp Preserve - 214 ac	• 17. Dr. Robert H Gore III Preserve 171 ac
• 9. Red Root Preserve - 9.5 ac	• 18. Rattlesnake Hammock Preserve - 37 ac
	• 19. Shell Island Preserve - 112 ac
	• 20. McIlvane Marsh Preserve - 381 ac
	• 21. Otter Mound Preserve - 2.5 ac



CONSERVATION COLLIER



Introduction

The purpose of this report is to provide the status of public access and amenities provided on the twenty-one (21) Conservation Collier preserves. The report includes two main sections: (1) Preserves Open to the Public and (2) Preserves Closed to the Public. Section 1 includes existing amenities on open preserves and further amenities proposed. Section 2 provides for existing preserves where public access would be compatible and proposed amenities that would facilitate the opening of public access. For more detailed information regarding preserve location and management, visit www.conservationcollier.com.

Attachment 1, *Preserve Amenities Spreadsheet* includes all proposed amenities that have been reviewed by the Lands Evaluation and Management Subcommittee of the Conservation Collier Land Acquisition Advisory Committee in 2021. All amenities listed on the spreadsheet are for purposes of long-term planning on the preserves. Amenities listed as Priority 1 are those *to be proposed* on the 5-year Capital Plan. Amenities listed as Priority 2 and 3 are proposed for even more long-term planning and after the 10-year acquisition phase (2021-2031) is complete. As Conservation Collier approaches the end of the acquisition phase, the strategic planning for unaddressed larger capital projects such as boardwalks and restrooms will be evaluated based upon the preserves acquired. The geographic distribution of such amenities should be considered in the planning of such amenities.

1. Preserves Open to the Public

Table 1. Preserves Open to Public Access

Proposed Amenities noted where such amenities were indicated as Priority 1 on Attachment 1: Preserve Amenities Spreadsheet;

Preserves Open to Public Access		
Preserve	Current Amenities	Proposed Amenities
Alligator Flag	Hiking Trail	None
Caracara Prairie	Hiking Trails, Hunting	Bridge/Trail from CREW parking
Cocohatchee Creek	Adjacent Parking, ADA hiking Trail, Picnic Table	None
Dr. Robert Gore III	Hiking Trail	ADA Parking Lot, ADA Access, Boardwalk to Interior
Freedom Park	Parking, Restrooms (on Parks property), Boardwalk, ADA Hiking Trails, ADA Lookout Pavilions	None
Gordon River Greenway	ADA Hiking Trail, Boardwalk, Restrooms (on Parks' property)	Lighting
Logan Woods	Hiking and Biking Trail, Bike Rack, Picnic Table, Bench	None
Nancy Payton	Parking Lot, Hiking and Biking Trail, Picnic Table	ADA Parking and Trails
Otter Mound	ADA Parking, Bike Rack, Hiking Trail, Benches	None
Panther Walk	Hiking Trail	Hiking trail expansion as more parcels acquired
Pepper Ranch	Hiking and Biking Trails, Equestrian Trails, Camping, Hunting, Picnic Tables, Lake Pier	2 Single Vault Toilets, Non-potable water at group campsite
Redroot	Hiking Trail, Bench	None
Rivers Road	Hiking Trail, Parking, Picnic Area, Benches	ADA Parking and Trails

Alligator Flag Preserve

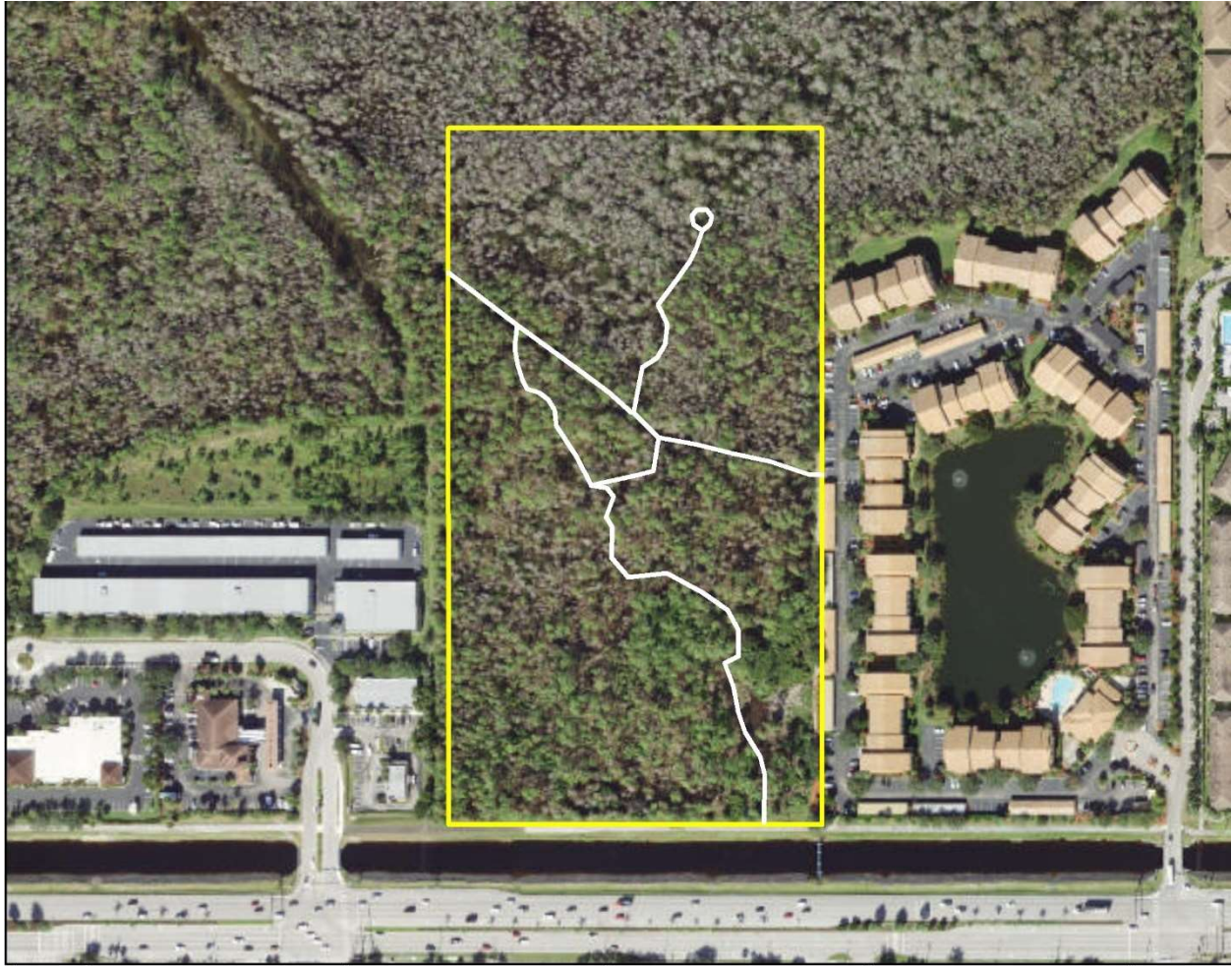
Click [here](#) for the Alligator Flag Preserve website.

Site Description: This 18.46-acre preserve is representative of several habitat types in Collier County, including seasonally flooded cypress-pine-cabbage palm, cypress wetlands, and pine flatwoods. Seventy-eight species of plants have been identified on the preserve, including four protected by the State of Florida. Many species of wildlife have also been recorded, including wetland dependent and migratory bird species, black bear, deer, raccoon and a ribbon snake.

Public Amenities: There is no vehicle parking available for this preserve. It is accessible by foot and bike from the Greenway bike and foot path located along the north side of Immokalee Road. Visitors can access the approximately 1-mile-long seasonal trail system; the trail loops through the preserve and through each of the habitat types. The trail is only accessible during dry season, as the entire preserve typically retains standing surface water during rainy season. There are no restroom facilities at this preserve.

Proposed Amenities: No further amenities are proposed at this time.

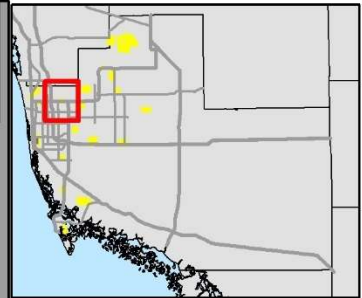




↑ 0 0.175 0.35 Miles

Alligator Flag Preserve

- Preserve Trails
- ▭ Preserve Boundary



Caracara Prairie Preserve

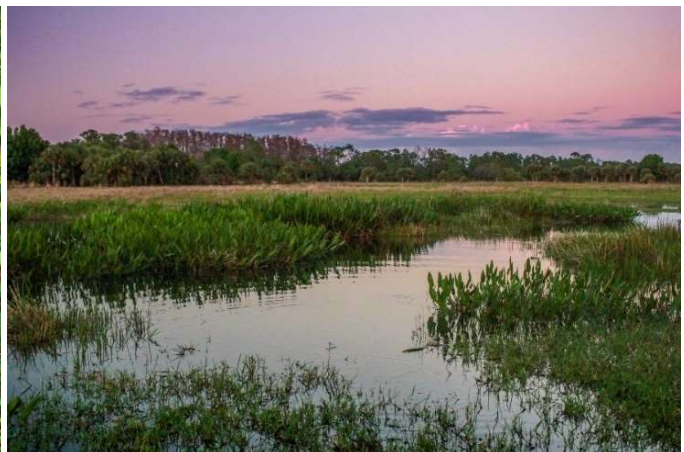
Click [here](#) for the Caracara Prairie Preserve website.

Site Description: This 367.7-acre preserve is critical habitat for the endangered Florida panther. Undeveloped before the 1950s, the property was historically composed of pine flatwoods dotted with freshwater marshes. From the 1950s through the 1970s, portions of the property were cleared for agriculture; furrows used in row crop cultivation can still be seen within cleared areas.

The dominant vegetation type on the preserve is prairie/pasture. Formerly agricultural fields, pastures have been improved with Bahia grass for cattle foraging but they also contain many native grasses and forbs. Pastures also provide habitat for native species including the sandhill crane, crested caracara, and gopher tortoise. Depressional marshes are the second most extensive vegetation community at the preserve; these circular wetlands dot the landscape and can be easily identified on an aerial map. Flooded for most of the year, these marshes provide water and foraging habitat for wildlife year-round, except in times of severe drought. Many wetland-dependent bird species depend on the marshes to survive, including protected species like woodstork, limpkin, and snowy egret. Alligators are also commonly found within the marshes. Mesic pine flatwoods cover the remainder of the preserve and provide habitat for the endangered Florida panther and its primary prey species, white tailed deer. Also present are the Florida black bear and invasive wild hogs.

Public Amenities: This preserve offers a 2.5-mile loop hiking trail, which connects with the adjoining CREW Cypress Dome Trails, and begins approximately 1 mile from the CREW Cypress Dome Trails parking area off Corkscrew Road. Currently, there is not direct access to the Caracara Prairie Preserve hiking trail. Recreational hunting opportunities are available at Caracara Prairie Preserve and managed by the Florida Fish and Wildlife Conservation Commission (FWC) CREW Wildlife Environmental Area (CREW WEA).

Proposed Amenities: After acquisition of the 5-acre parcel north of the preserve, install a bridge/trail from existing CREW parking lot to connect directly with the existing Caracara Preserve trail system.

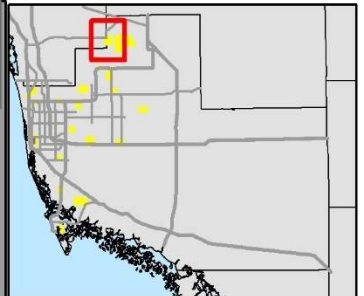




↑ 0 0.5 1 Miles

Caracara Prairie Preserve

— Preserve Trails
▭ Preserve Boundary



Cocohatchee Creek Preserve

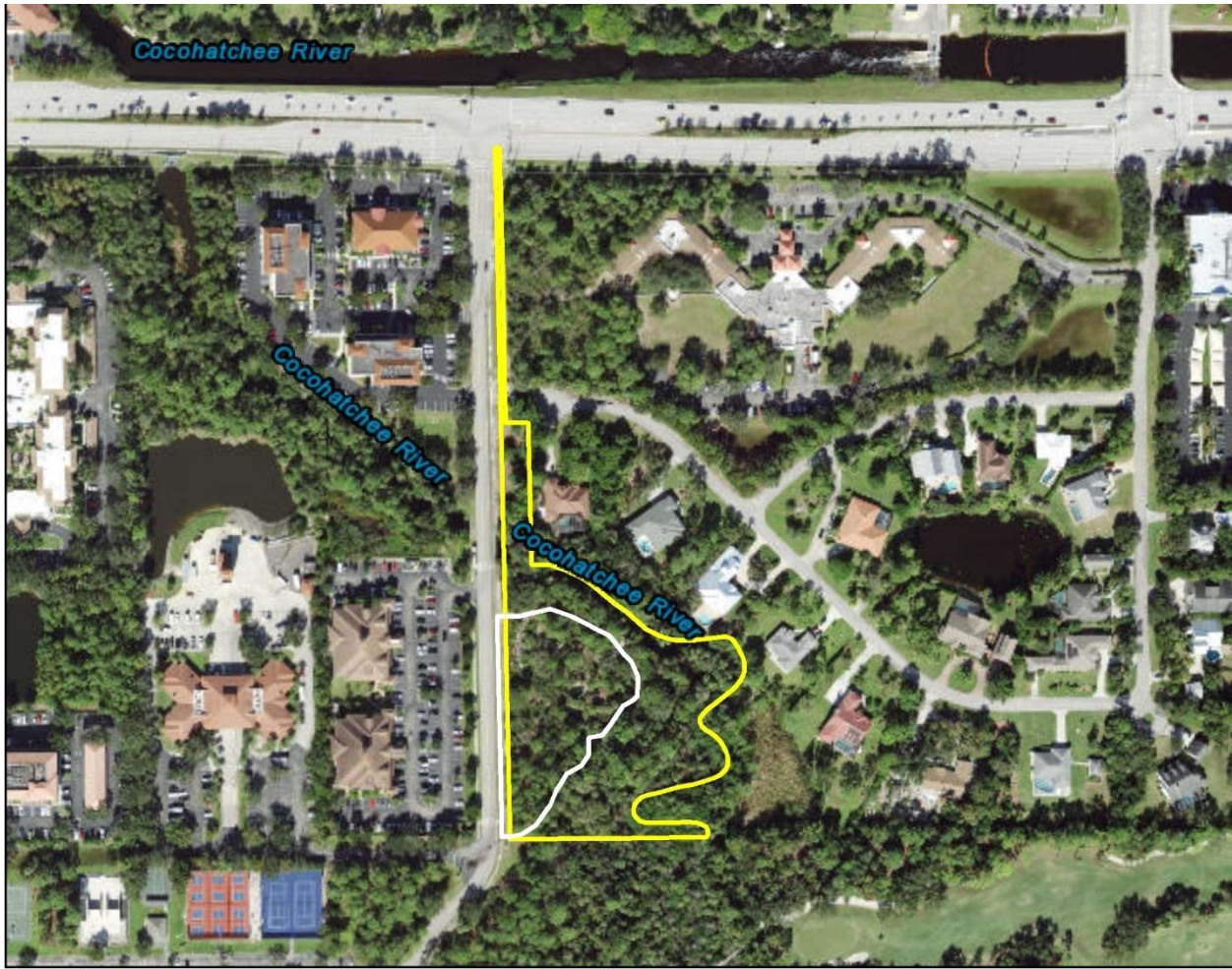
Click [here](#) for the Cocohatchee Creek Preserve website.

Site Description: This 3.64-acre preserve was acquired because it contains one of the rare and unique vegetation communities the Conservation Collier Program seeks to protect - riverine oak - in addition to pine flatwood, oak scrub, and wetland dependent plant communities. The preserve is also home to several gopher tortoises, a species of special concern in the State of Florida. Prickly pear cactus, a food source for gopher tortoise, grows in the oak scrub area where a resident gopher tortoise can sometimes be seen browsing. Along the creek, leather ferns and swamp lilies grow among the sawgrass and sedges, where wetland dependent bird species forage. Acquisition of the preserve also protects lands that buffer the creek, which flows south, contributing ultimately to the Gordon River and Naples Bay watershed. Much of the creek watershed is already protected south of the Preserve; acquisition of this parcel increased existing protection.

Public Amenities: Adjacent parking is located at the Veteran's Community Park, a short walk from the Preserve. Restroom and handicapped parking facilities are available at Veteran's Park. A shell trail winds approximately 700 feet through the Preserve taking visitors to a picnic area under shady oaks that line the Cocohatchee Creek. The portion of the trail leading to the picnic area is wheelchair accessible from the sidewalk along the east side of Veteran's Park Drive.

Proposed Amenities: No further amenities are proposed at this time. However, the trail will need to be resurfaced within the next 5 years and the creek platform will eventually need repair.

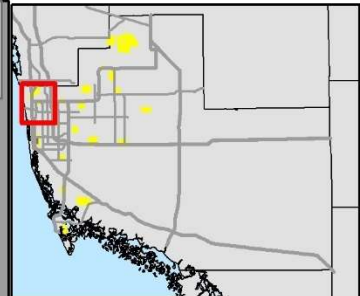




↑ 0 0.175 0.35
Miles

Cocohatchee Creek Preserve

-  Preserve Trails
-  Preserve Boundary



Dr. Robert H. Gore III Preserve

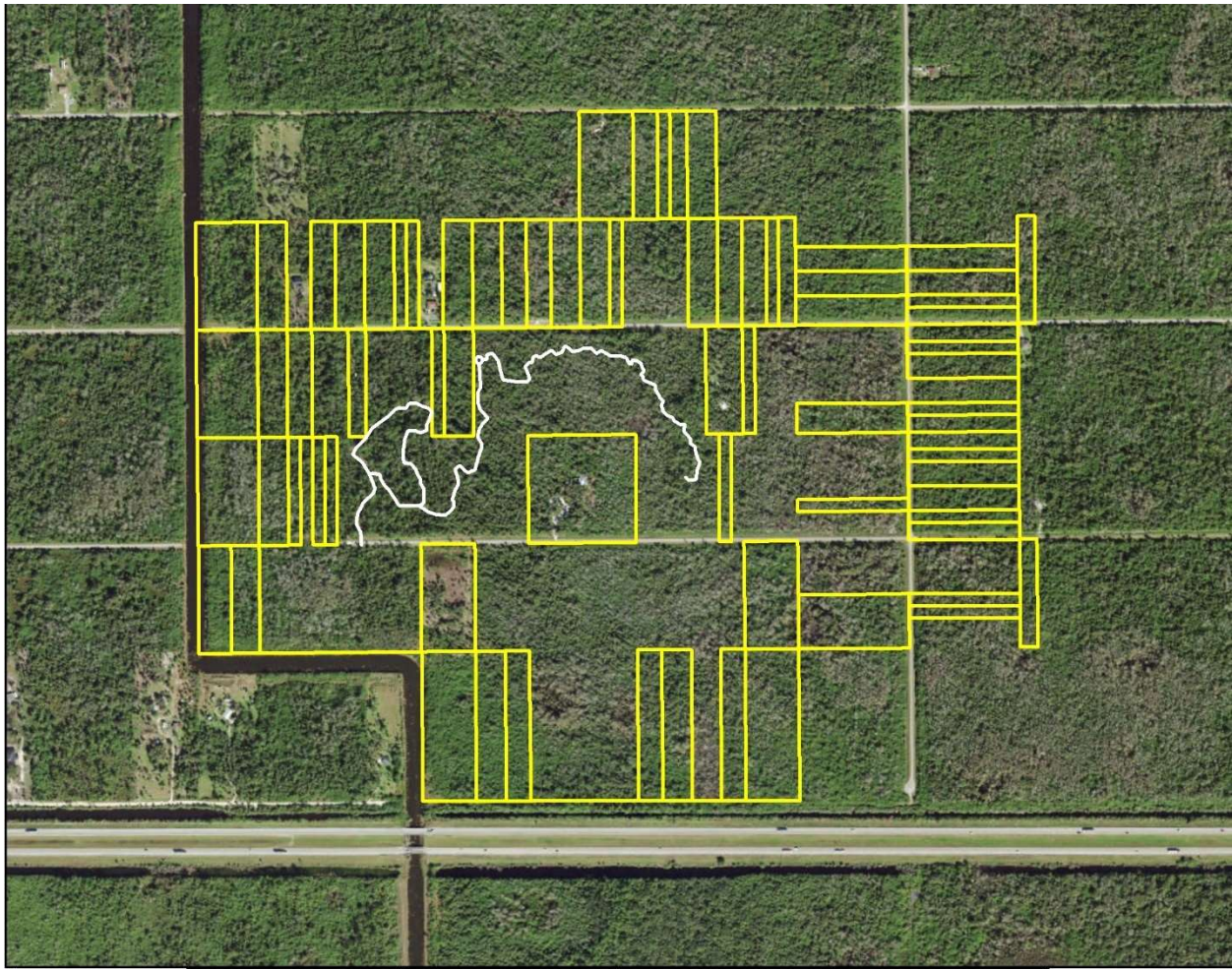
Click [here](#) for the Dr. Robert H. Gore III Preserve website.

Site Description: The 171.2-acre Gore Preserve is located within 1 mile of several integral state and federal conservation lands which provide contiguous habitat for a diversity of imperiled wildlife species. The 26,000-acre Florida Panther National Wildlife Refuge provides contiguous habitat along the eastern boundary of the preserve, while to the south, the 78,000-acre Picayune Strand State Forest and 85,000-acre Fakahatchee Strand Preserve State Park provide opportunities for wildlife utilizing the Gore Preserve to disperse throughout a contiguous network of conservation lands, via the wildlife underpasses beneath Interstate 75. As a result of this close network of managed wildlife habitat, the Gore Preserve lands record significant and consistent observations of large, long ranging wildlife species like the federally endangered Florida panther and Florida black bear.

Public Amenities: Passive, nature-based recreational opportunities are available at the Gore Preserve in the form of hiking, biking, wildlife photography, guided hikes, birdwatching, and leashed dog walking. Currently, the preserve provides a 2-mile trail for visitors that is one way in, one way out.

Proposed Amenities: It may be desirable to add a second trail connection to the Gore Nature Education Center along the eastern portion of the property to greater facilitate a loop path for educational events and guided hikes. Also included in the conceptual plans is a parking area for visitors to the preserve. Currently, there are conceptual and alternate parking lot locations which will be finalized depending on future acquisitions. Future goals would be to install a 5-10 space parking area with access across the road right of way. The parking area would be surrounded by wildlife friendly fencing with trail access points and bollards. If a buffer is required, native vegetation will be planted that does not require additional irrigation. Also included in the conceptual trail enhancements are separate trail entrances for land management and emergency response vehicles that will be locked and gated and will allow for the construction of trailhead entrances for public visitors that facilitate access for hiking and biking but prevent access by off-road vehicles. A ~500' boardwalk to the cypress dome on the SW corner of the property has been proposed for educational programs and ADA access. Staff will investigate adding a restroom facility to the preserve.

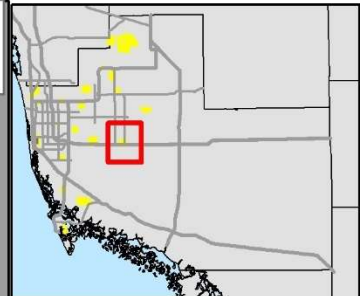




↑ 0 0.5 1 Miles

Dr. Robert H. Gore III Preserve

- Preserve Trails
- ▭ Preserve Boundary



Freedom Park Preserve

Click [here](#) for the Freedom Park Preserve website.

Site Description: The eastern 12.5 acres of the 50-acre property, owned by Conservation Collier, is comprised of natural wetlands. Upon purchase, the existing vegetation included towering cypress, pond apple, and mangroves, but it was heavily choked with invasive exotic plants, primarily Brazilian pepper and shoebuttan ardisia. The restoration of this area served as mitigation for alterations that took place elsewhere on the property. The invasive exotic plant species were removed, and the wetland area was restored with native plants, including the flowering pickerel weed, swamp lily, sagittaria and canna lily that can be seen from the boardwalk. Native plants are identified by plaques posted along the boardwalk railing. Many of the plants are food and larval host plants for colorful native butterflies. Native wildlife is also regularly spotted by visitors along the boardwalk. Frequent wildlife sightings include red shouldered hawks, a barred owl, pileated woodpeckers, green herons, great blue herons, little blue herons, great white herons, raccoons, gray squirrels, marsh rabbits, river otter, armadillos, alligators, turtles, snakes, and frogs.

Public Amenities: There is vehicle access to the Park from both sides of Golden Gate Parkway with free public parking. Public restrooms are in the 2,500 square feet Exhibition Hall. A 3,500-foot boardwalk extends over the eastern side of the park and the portion belonging to Conservation Collier. Trails punctuated by six lookout pavilions wind around the lakes in the western side of the park. The entire park is accessible by wheelchair.

Proposed Amenities: Boardwalk maintenance has been scheduled for safety concerns. Signage around the preserve is also scheduled to be repaired.

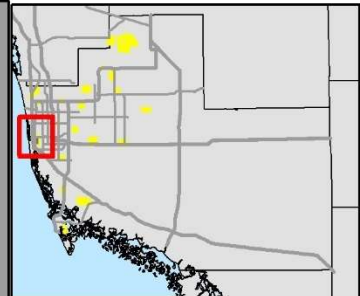




0 0.275 0.55
Miles

Freedom Park Preserve

-  Preserve Trails
-  Preserve Boundary
-  Parking
-  Restrooms



Gordon River Greenway Preserve

Click [here](#) for the Gordon River Greenway Preserve website.

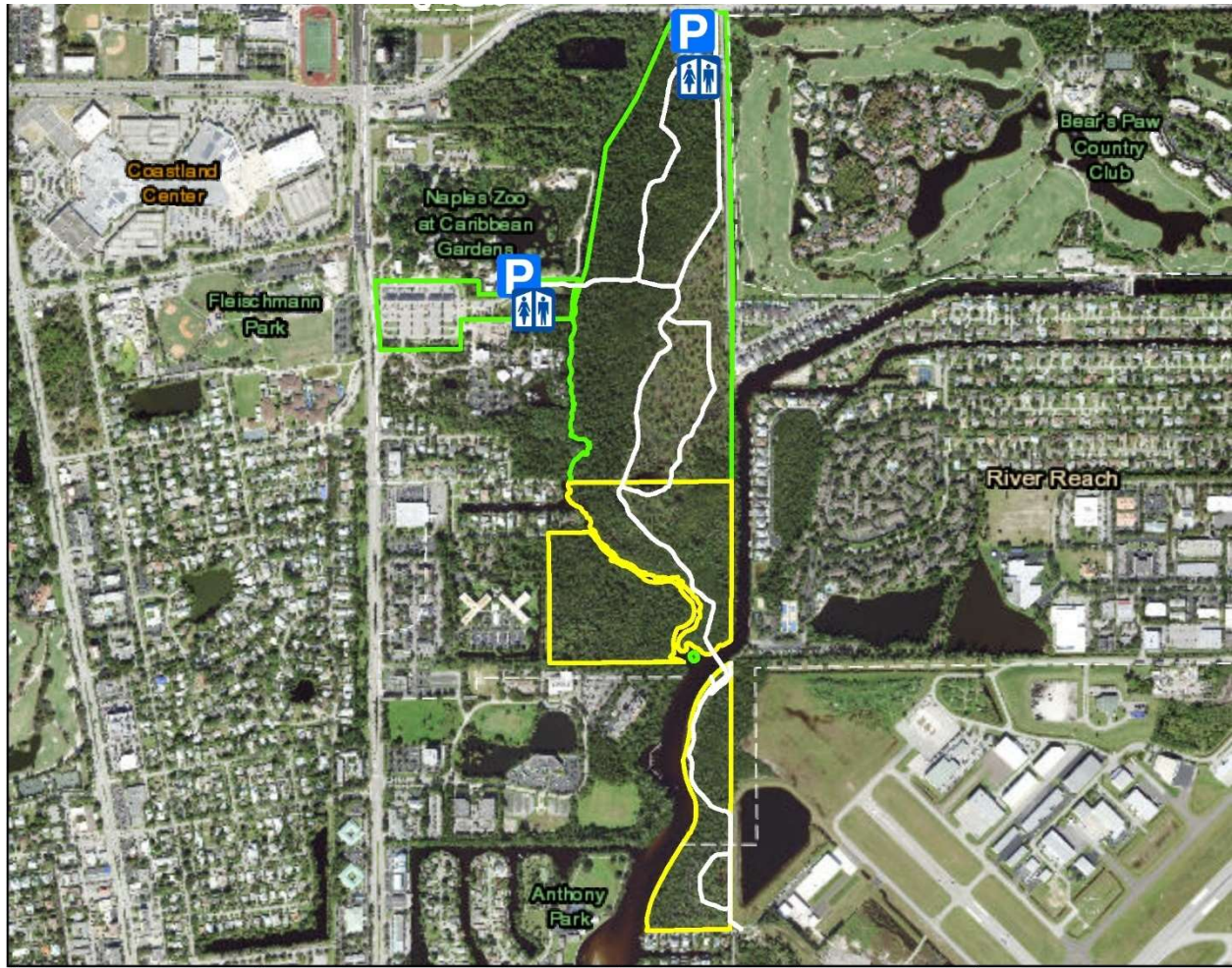
Site Description: The Gordon River Greenway Preserve is a 43.54-acre natural area within the boundary of an unincorporated area of Collier County, Florida, which is directly adjacent to the City of Naples. Native plant communities within the preserve include mangrove swamp, scrubby flatwoods, hardwood/coniferous/palm mixed, and mixed wetland hardwoods.

The preserve is one part of the larger "Gordon River Greenway Project," which will be a 2-mile ecological and trail corridor centrally located within the Naples-Collier urban area. The Gordon River Greenway Preserve and the Gordon River Greenway Park, directly to the north, are being designed, permitted, and constructed together as one County project. Public amenity features along the boardwalk will be consistent throughout the entire project. Certain aspects of the trail system, such as trail width, security lighting, and hours of operation will be determined by County officials, with input from the Conservation Collier Program, to ensure public safety and consistency throughout the project area.

Public Amenities: Currently, there is over one mile of boardwalk and asphalt trail through the Conservation Collier boundary of the Greenway and has restroom and water fountain access. The boardwalk trail features a fishing pier for anglers and several rest/shade structures.






Proposed Amenities: Boardwalk maintenance in the larger "Gordon River Greenway Project" has been scheduled, along with adding lighting along the unlit portion of the greenway. Interpretive and wayfinding signage has been recently installed throughout the trail system.

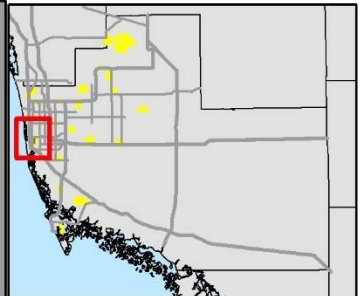




↑ 0 0.5 1 Miles

Gordon River Greenway Preserve

-  Preserve Trails
-  Preserve Boundary
-  Parks Boundary
-  Parking
-  Restrooms



Logan Woods Preserve

Click [here](#) for the Logan Woods Preserve website.

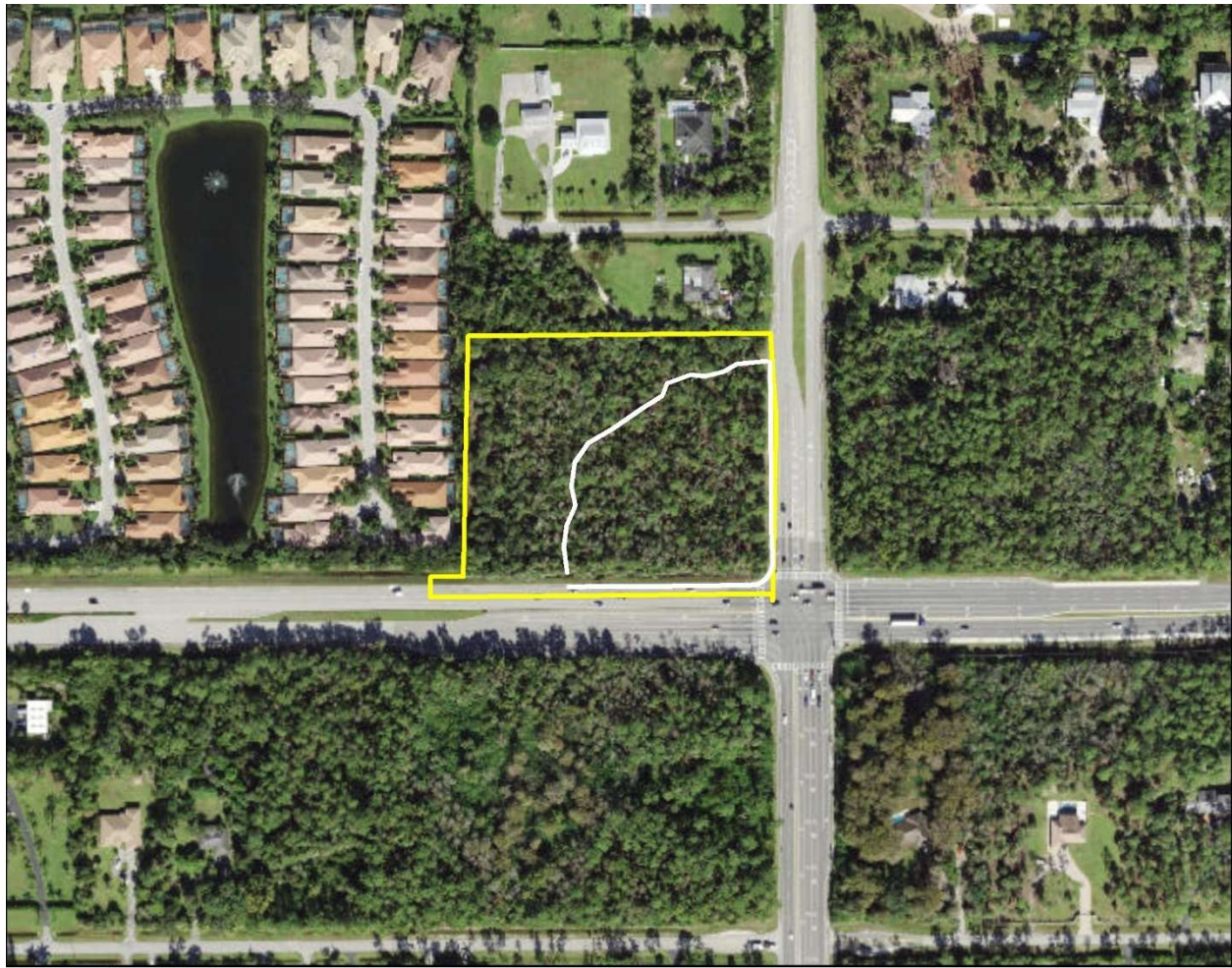
Site Description: Before the lands around this 6.8-acre property were developed, they were part of a shallow seasonal slough, that carried surface water south and west during the rainy season and was dry the rest of the year. The vegetation community that existed at that time was cypress-pine-cabbage palm. When the surrounding lands were developed, they were filled and raised. As a result, this parcel accepted much of the area runoff and waters became ponded in the rainy season. This permanently changed the conditions of the vegetation community.

Additionally, melaleuca and Brazilian pepper invaded and crowded out much of the existing native plants. With the exotics now removed, native understory and groundcover plant species have begun to regrow from seeds that had laid dormant for many years in the top layers of soil. Ferns now carpet the ground where the melaleuca grew thickly and pine seedlings, once deprived of the light they needed to grow, have begun to spring up. While the site will not return to its pre-development conditions due to the permanently changed hydrology, many of the native plants are reappearing. Visitors can see a wide variety of native upland and wetland plants at this small urban preserve. Raccoons, armadillo and many species of urban birds are also commonly seen here.

Public Amenities: This preserve is accessible to the walking and biking public from both Logan Blvd and Pine Ridge Road. There is no public parking available. A 620 ft. trail extends from Logan Blvd., where the preserve sign and bike rack are located, through the preserve to Pine Ridge Road. A picnic table and bench are located halfway through to provide walkers with resting spots within the preserve. There are no restrooms or drinking water facilities at this preserve.

Proposed Amenities: No further amenities are proposed at this time.

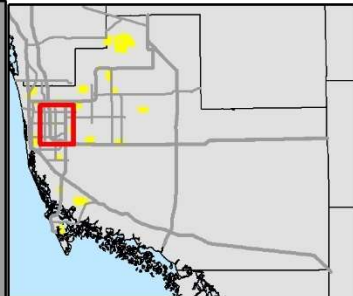




↑ 0 0.175 Miles 0.35

Logan Woods Preserve

- Preserve Trails
- ▭ Preserve Boundary



Nancy Payton Preserve

Click [here](#) for the Nancy Payton Preserve.

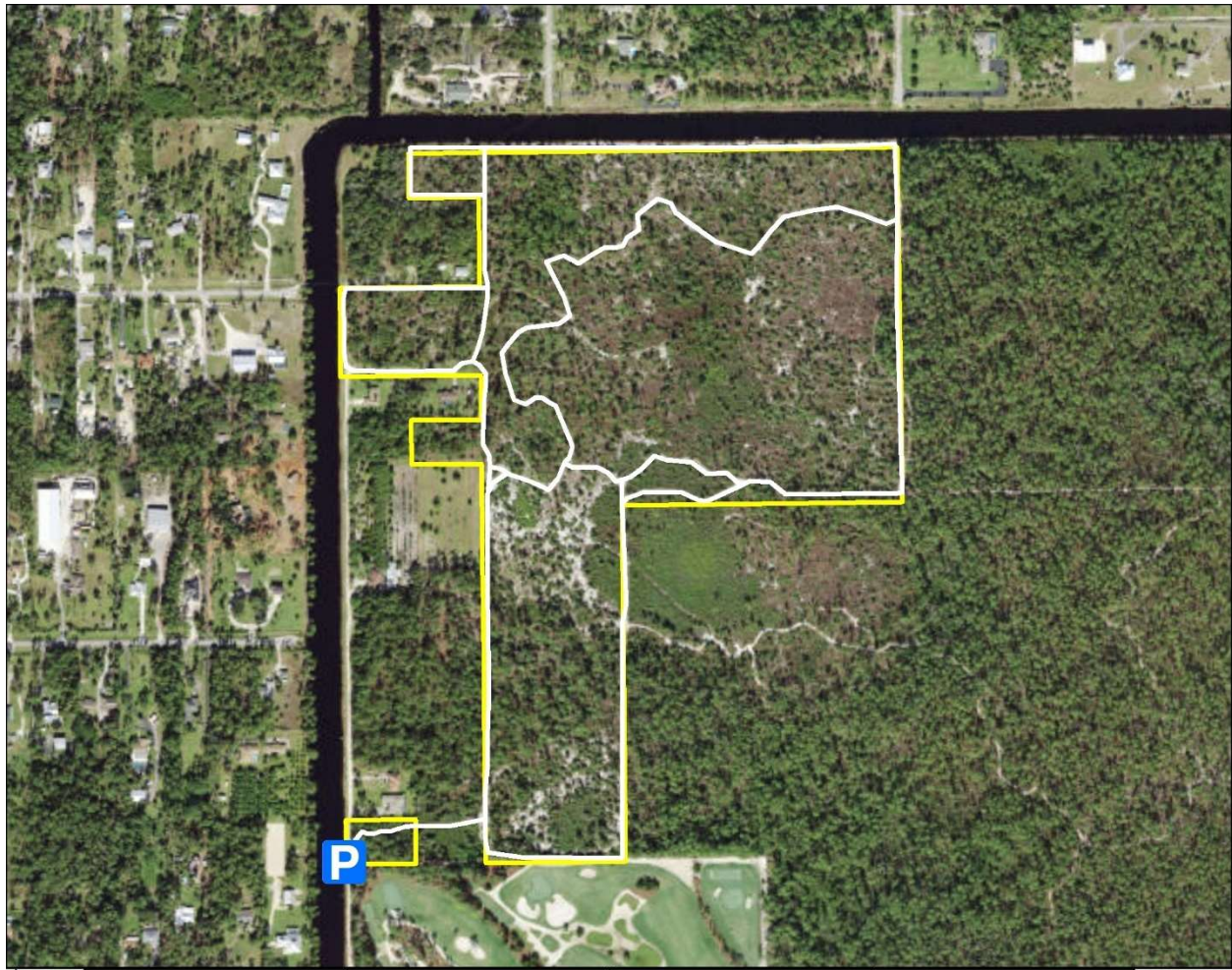
Site Description: The dominant vegetation community within the 71-acre preserve is pine flatwoods. One-hundred and forty-seven (147) plant species have been recorded growing within the preserve boundary. Of these, (121) species, 82%, are native to the site, and 26 species or 18 % are non-native or introduced. The canopy is dominated by South Florida slash pine (*Pinus elliottii var. densa*) and scattered cypress (*Taxodium ascendens*), the midstory with cabbage palms (*Sabal palmetto*) and saw palmetto (*Serenoa repens*), and ground cover is mainly muscadine grapevine (*Vitis rotundifolia*) and grasses. Some species, like the flag pawpaw (*Asimina obovate*), are endemic to South and Central Florida.

Wildlife known to occur or directly observed within the preserve include the bobcat (*Felis rufus*), cotton mouse (*Peromyscus gossypinus*), gopher tortoise (*Gopherus polyphenus*) eastern gray squirrel (*Sciurus carolinensis*), Florida panther (*Puma concolor coryi*), nine-banded armadillo (*Dasypus novemcinctus*), raccoon (*Procyon lotor*), spotted skunk (*Spilogale putorius*), Virginia opossum (*Didelphis virginiana*), white-tailed deer (*Odocoileus virginianus*), Big Cypress fox squirrel (*Sciurus niger avicennia*), red-cockaded woodpecker (RCW) (*Picoides borealis*), Florida black bear (*Ursus americanus floridanus*), and at least six different woodpecker species. Of these, the Florida panther, Big Cypress fox squirrel, Florida gopher tortoise and red-cockaded woodpeckers are listed by state and/or federal agencies as threatened and endangered.

Public Amenities: The preserve is accessible to the walking, biking, and horseback riding public from the parking lot located along Blue Sage Drive at the southwest corner of the preserve. There is a picnic area and benches located along the hiking trails to provide the public with areas to take a break and/or enjoy the sights and sounds of the preserve. Staff will investigate adding a restroom facility to the preserve.

Proposed Amenities: One ADA parking space, along with an ADA trail composed of crushed shell that leads to the picnic area just east of the parking area.

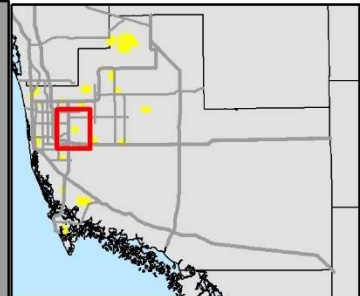




↑ 0 0.375 0.75
Miles

Nancy Payton Preserve

- Preserve Trails
- ▭ Preserve Boundary
- P** Parking



Otter Mound Preserve

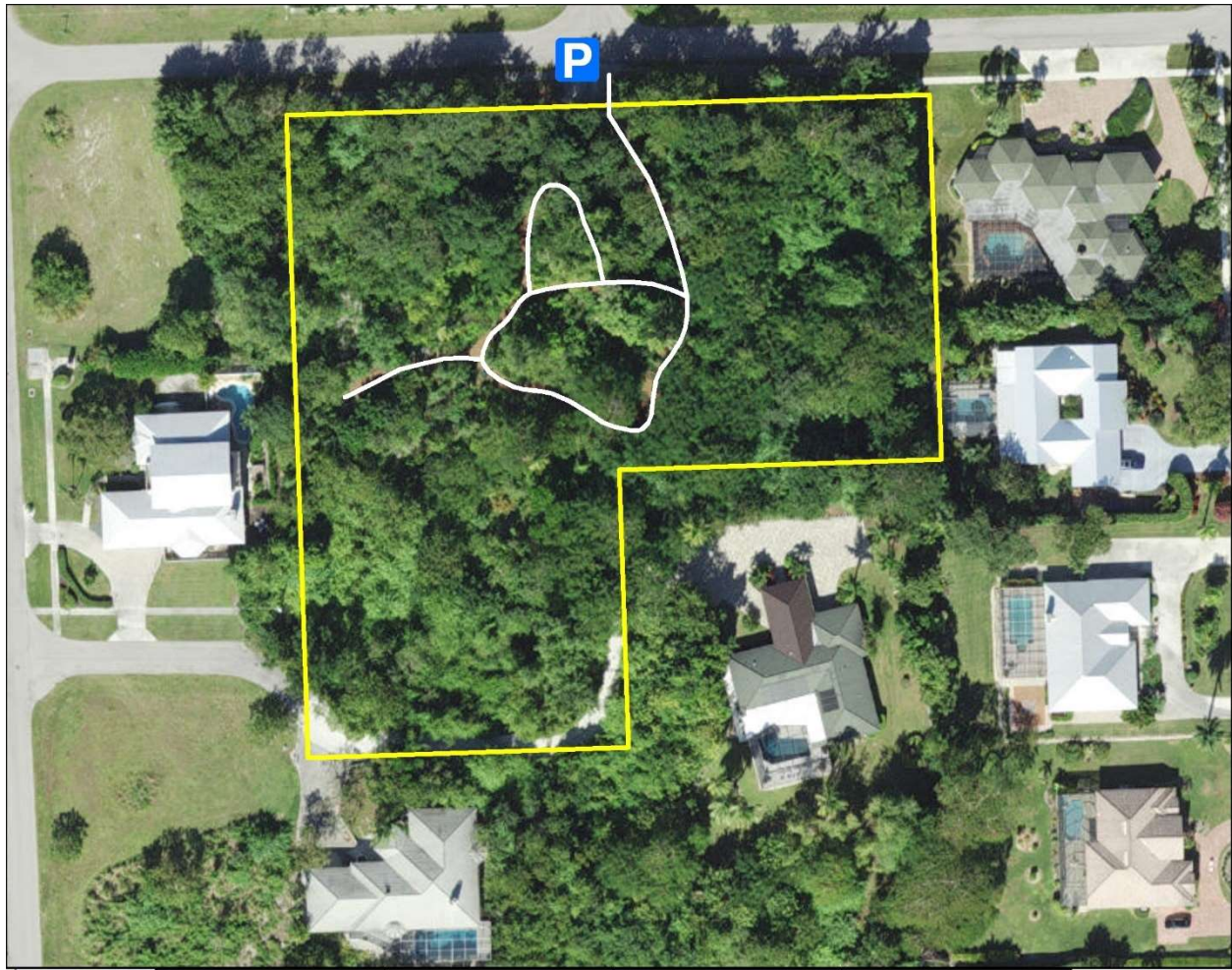
Click [here](#) for the Otter Mound Preserve.

Site Description: This 2.45-acre preserve located on Marco Island protects both rare tropical hardwood hammock habitat and an important Calusa shell mound archaeological site. Tropical hardwood hammock provides food and cover for many resident and migratory wildlife species that typically use such habitat. Fifty-seven (57) species of birds and one hundred and twenty-seven (127) plant species have been recorded at Otter Mound Preserve. Other wildlife observed includes the Florida gopher tortoise, Virginia opossum, armadillo, raccoon, grey squirrel, and the occasional bobcat.

Public Amenities: There are three parking spots, one being an ADA accessible spot, along with a bike rack located at the preserve entrance on Addison Court. The mulched trail, which starts at the parking area, loops through the preserve and is shaded for much of the way. Benches located along the trail provide comfortable spots to rest. Along the trail are several interpretive signs that inform the visitor about the habitat and the archeological and historical aspects of the property. There are no restroom facilities or drinking water at the Preserve.

Proposed Amenities: No further amenities are proposed at this time.





↑ 0 0.05 0.1 Miles

Otter Mound Preserve

- Preserve Trails
- ▭ Preserve Boundary
- P** Parking



Panther Walk Preserve

Click [here](#) for the Panther Walk Preserve website.

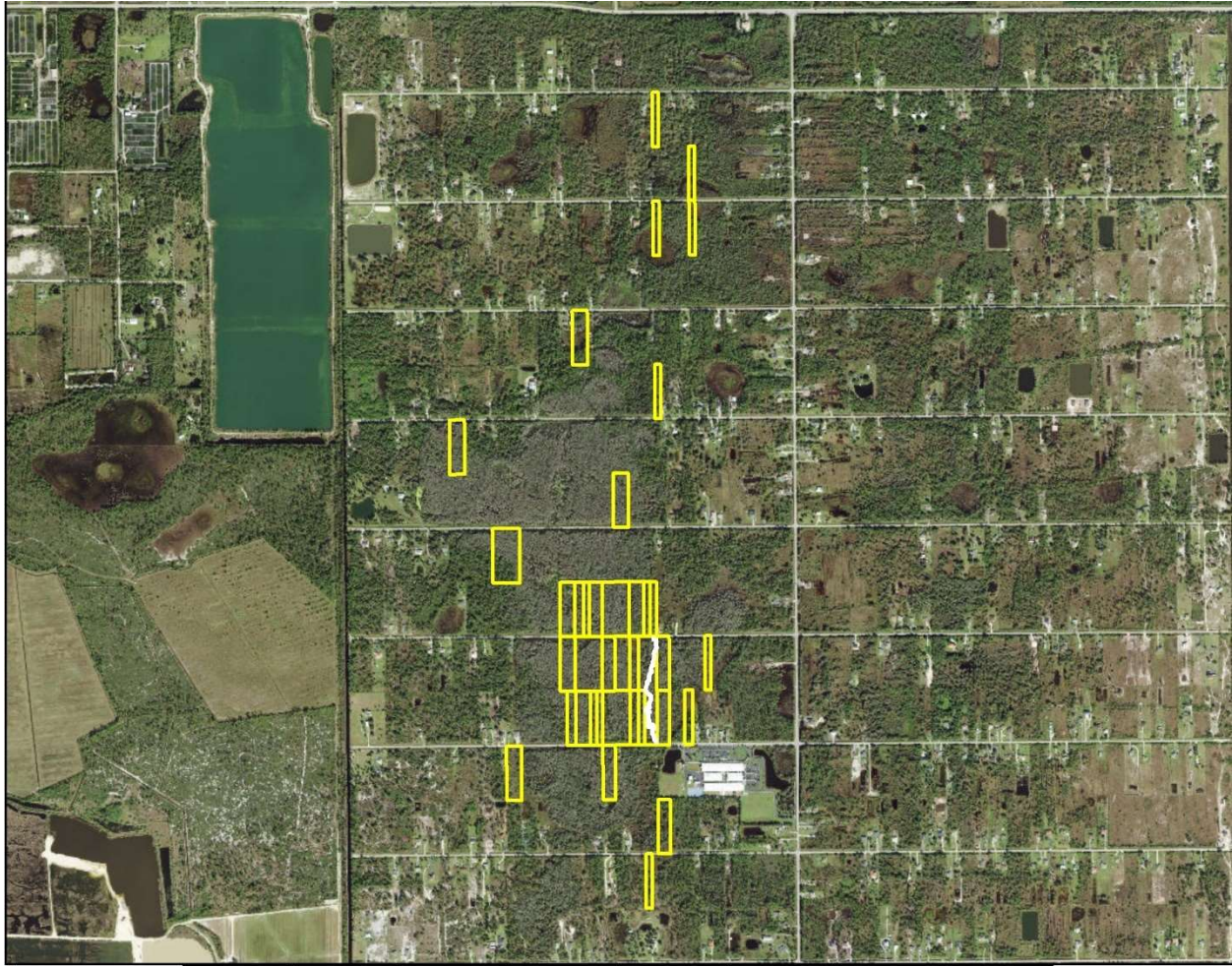
Site Description: This expanding 10.68-acre preserve is situated within the Horsepen Strand, a two-mile-long wetland slough feature within the North Golden Gate Estates, is a beautiful example of cypress strand swamp. The Florida natural Areas Inventory and the Florida Department of Natural Resources (1990) classifies strand swamps as imperiled globally and statewide due to rarity or other factors making them vulnerable to extinction. While the strand forest is dominated by cypress (*Taxodium distichum*), it also contains a mixture of temperate and tropical tree species including red maple (*Acer rubrum*), swamp laurel oak (*Quercus laurifolia*), pond apple (*Annona glabra*), strangler fig (*Ficus aurea*), swamp bay (*Persea palustris*), coastal plain willow (*Salix caroliniana*), and sweetbay (*Magnolia virginiana*). Midstory vegetation includes wax myrtle (*Myrica cerifca*), myrsine (*Rapanea punctata*), and buttonbush (*Cephalanthus occidentalis*).

Listed plant species within the preserve include locally common, but nationally and globally rare, bromeliads such as the common wild pine (*Tillandsia fasciculata*) and the inflated wild pine (*Tillandsia balbisiana*). Sixty-four (64) plant species have been documented within the preserve, with 61 (96%) being native species. Bird species recorded include American Robin, black and white warblers, palm warblers, red shouldered hawk, red bellied woodpecker, downy woodpecker, tree swallow, gray catbird, turkey vulture, blue-gray gnatcatcher, northern cardinal, blue jay, Northern mockingbird, and swallow-tailed kite. Mammals observed utilizing the preserve include the Florida panther, Florida black bear, raccoon, Virginia opossum, white-tailed deer, and Big Cypress Fox Squirrel.

Public Amenities: This preserve is open to the public year-round and has a primitive trail that can be accessed from either 60th Ave NE or 62nd Ave NE and is approximately half a mile in length.

Proposed Amenities: Existing trail is to be expanded as more parcels are acquired.

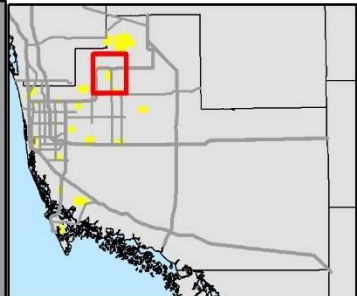




↑ 0 0.5 1 2 Miles

Panther Walk Preserve

- Preserve Trails
- ▭ Preserve Boundary



Pepper Ranch Preserve

Click [here](#) for the Pepper Ranch Preserve website.

Site Description: Ten types of intact native plant communities are documented on the 2,512-acre property located just west of Immokalee, FL. These include woodland pasture, pine flatwoods, upland and wetland hardwood forests, oak-cabbage palm forest, cypress, freshwater marsh, and wet prairie. Wildlife observed on the ranch include the Florida sandhill crane, crested caracara, Southeastern American kestrel, wood stork, white pelican, numerous wading bird species, bald eagles, Florida gopher tortoise, Florida black bear, Florida panther, white-tailed deer, hog, American alligator, and more.

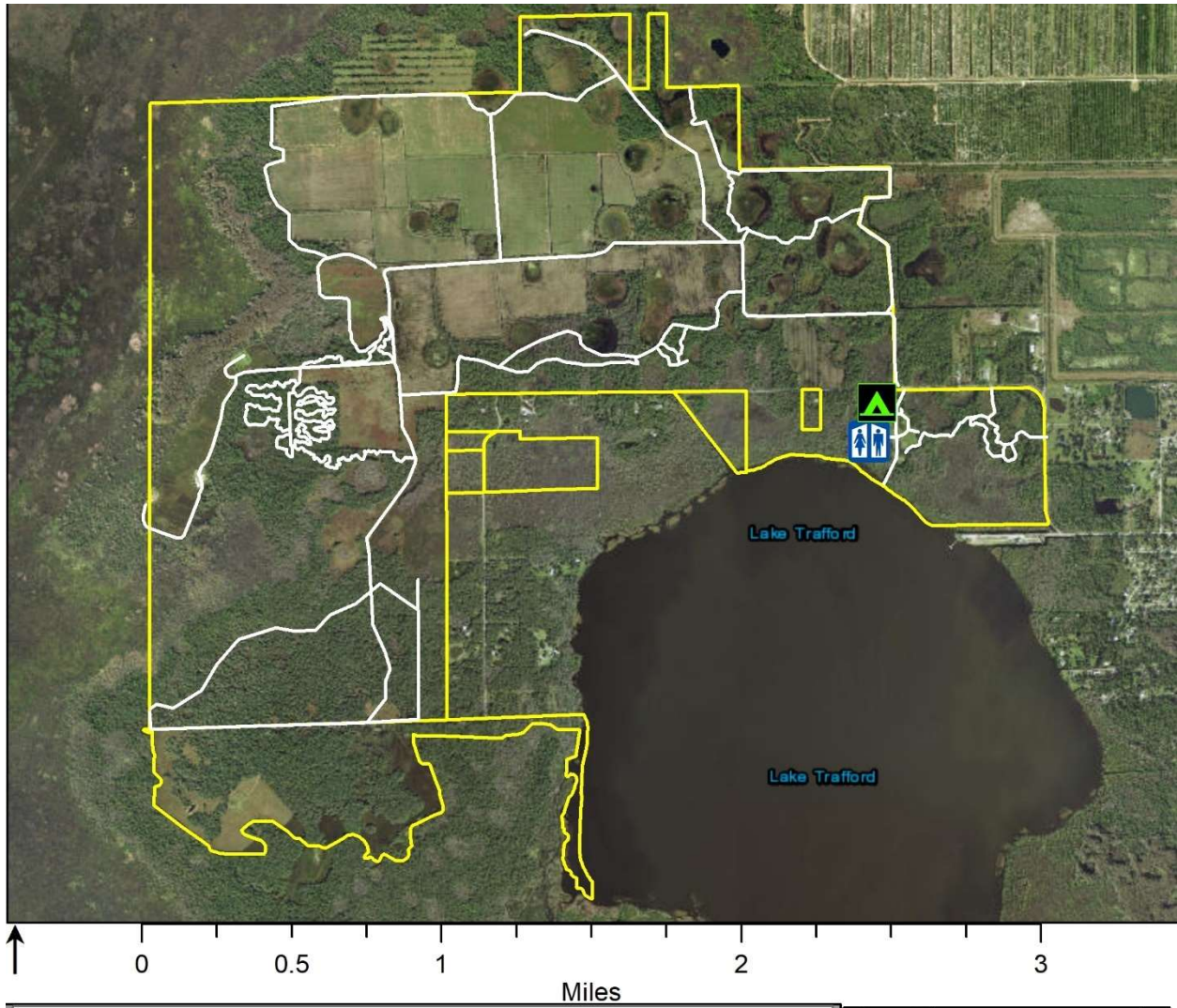
Acquisition of the ranch offered multiple opportunities for protection of water resources, including recharge of aquifers, habitat protection for wetland dependent species, protection of the Corkscrew swamp and marsh complex, and protection of wetlands associated with Lake Trafford. Located within the Corkscrew Regional Ecosystem Watershed, the property adjoins more than 42,000 public and private acres already held in conservation status and further protects the Corkscrew Marsh, the headwaters for Collier County's drinking water supply.

In addition to its many environmental attributes, there are historical and archeological features to the ranch. This property has been a farm, hunting grounds, cattle ranch, fishing camp, and home for one local family since 1926, until it was sold to Collier County in 2009. It also borders Lake Trafford, the largest natural lake in Collier County and the location of early settlements by Native Americans. Artifacts discovered in and around the lake have been dated to 550 A.D.

Public Amenities: Pepper Ranch Preserve is open to the public every Friday and non-hunt Saturday and Sunday from 7:00am-5:00pm November-June; the preserve is closed Monday-Thursday. The visitor center has campsites available for reservation on non-holiday/non-hunt Friday and Saturday nights from November – June. Campsites include bathroom access, shower, fire ring, and picnic tables. The preserve boasts 17.6 miles of trails, including hiking and shared trails for hiking, biking, and horseback riding.

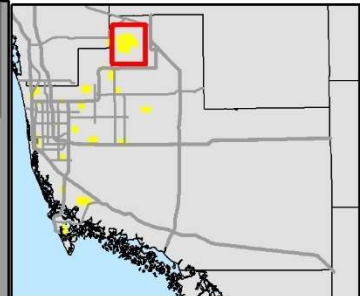
Proposed Amenities: A 400' boardwalk into the slough, single vaulted toilet at the group campsite, single vaulted toilet at Mountain Bike Trailhead, and a non-potable water well at the group campsite has been proposed.





Pepper Ranch Preserve

-  Preserve Trails
-  Preserve Boundary
-  Restrooms
-  Camping



Redroot Preserve

Click [here](#) for the Redroot Preserve website.

Site Description: Fifty-eight species of plants, fifty native (2 protected plant species) and eight non-natives, are documented as occurring within two types of vegetation communities on the 9.26-acre preserve, mesic pine flatwoods and freshwater marsh. Immokalee fine sand underlies this part of the preserve. Common mesic pine flatwood species such as saw palmetto (*Serenoa repens*), wax myrtle (*Myrica cerifera*), cabbage palm (*Sabal palmetto*), and gallberry (*Ilex glabra*) are found in this portion of the preserve. Mesic flatwoods provide essential forested habitat for a variety of wildlife species including Neotropical migratory birds, wide-ranging large carnivores, mid-sized carnivores, ground-nesting vertebrates, tree-cavity dependent species, tree-nesting species and non-aquatic plant life.

A freshwater marsh comprises approximately 22% of the preserve and is located primarily in the eastern, center portion. Freshwater marshes are often scattered among pine flatwoods communities and may therefore be referred to as flatwoods marshes. Sawgrass (*Cladium jamaicense*), swamp lily (*Crinum americanum*), giant leather fern (*Acrostichum danaeifolium*), and native wetland grasses are found in freshwater marshes. Many animal species may be found within or around the perimeter of marshes. Invertebrates make up an important part of the food web and many avian species, especially wading birds, rely on the invertebrates as a primary food source. The freshwater marsh within the preserve makes up a small portion of the total area but is invaluable for the suite of species that may be found there.

Public Amenities: Parking is currently limited to the right of way along Limpkin road where there is room for approximately 3 vehicles. A half-mile trail leads visitors through the preserve and a bench is located along the trail.

Proposed Amenities: No further amenities are proposed for this preserve at this time.

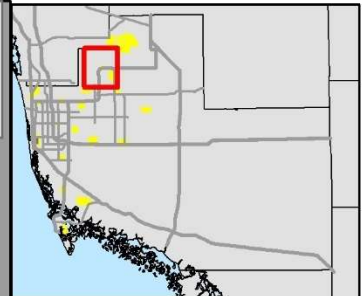




↑ 0 0.075 Miles 0.15

Red Root Preserve

- Preserve Trails
- ▭ Preserve Boundary



Rivers Road Preserve

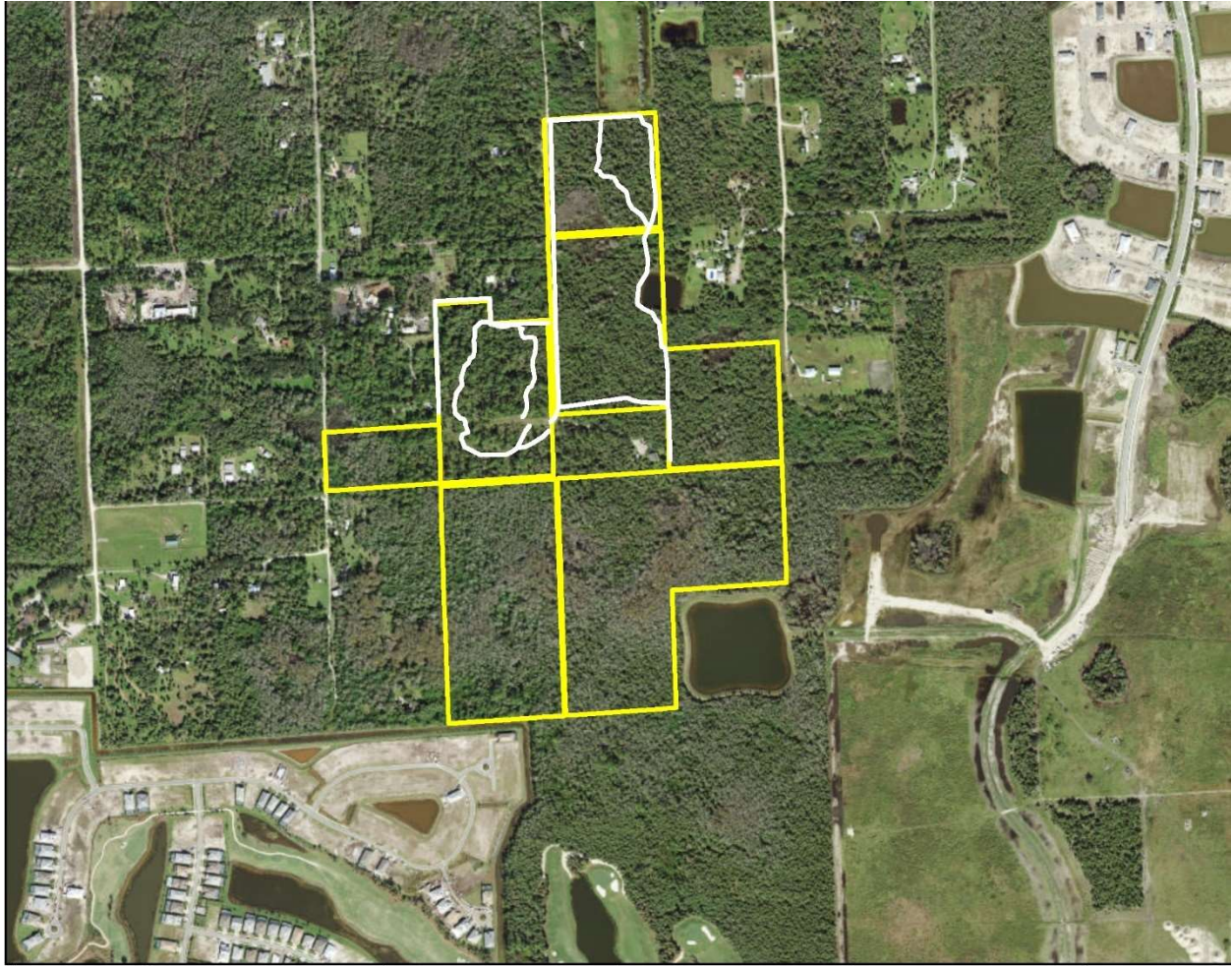
Click [here](#) for the Rivers Road Preserve website.

Site Description: The 76.74-acre preserve is a combination of cabbage palm, inland ponds and sloughs, mixed wetland hardwoods, cypress, pine flatwoods, mixed wetland forests, and freshwater marshes. The preserve also contains outstanding pop ash swamps and several wetlands. One hundred and sixty-two vascular plant species were recorded on the preserve. Listed plant species include common wild pine (*Tillandsia fasciculata*), hand fern (*Ophioglossum palmatum*), and reflexed (inflated) wild pine (*Tillandsia balbisiana*).

Public Amenities: 1.5 miles of hiking trails are available to visitors from dawn to dusk, 7 days a week. Parking is available at the trailhead at the end of Rivers Road. There is a picnic area available for public use built by a local Eagle Scout as well as several benches along the trail.

Proposed Amenities: Transform existing parking area and trails to an ADA compliant picnic area. Staff will investigate adding a restroom facility to the preserve.

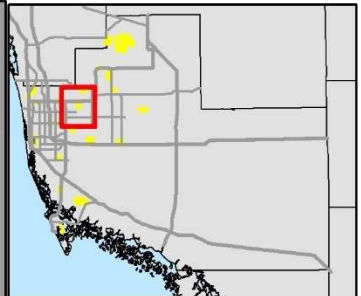




↑ 0 0.5 Miles 1

Rivers Road Preserve

- Preserve Trails
- ▭ Preserve Boundary



2. Preserves Closed to the Public

Table 2. Preserves Closed to Public Access

Where noted as Incompatible, public access is not proposed. Proposed Amenities noted where such amenities were noted as Priority 1 on Attachment 1: Preserve Amenities Spreadsheet.

Preserves currently Closed to Public Access		
Preserve	Compatible to Public Access	Proposed Amenities*
Railhead Scrub	Compatible	Currently Resource Protection. After roadway built public access will follow including trails.
Rattlesnake Hammock	Compatible	ADA Compliant Parking and Trail, Wetland Overlook
Red Maple Swamp	Compatible	Currently Resource Protection, Seasonal Hiking and/or Swamp Walk Trail
Winchester Head	Compatible	Currently Resource Protection Seasonal hiking trail, birding tower
Preserve	Incompatible to Public Access	Proposed Amenities
Camp Keais	Incompatible	None (Resource Protection)
Mcllvane Marsh	Incompatible	None (Resource Protection)
Shell Island	Incompatible	None (Resource Protection)
Wet Woods	Incompatible	None (Resource Protection)

*Where proposed amenities indicated see preserve narrative section for details.

Railhead Scrub Preserve

Click [here](#) for the Railhead Scrub Preserve website.

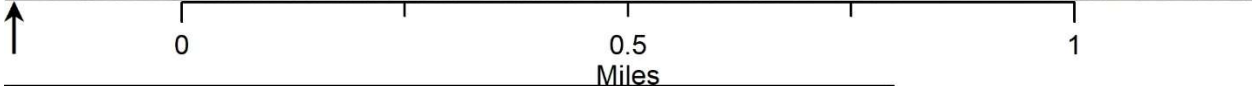
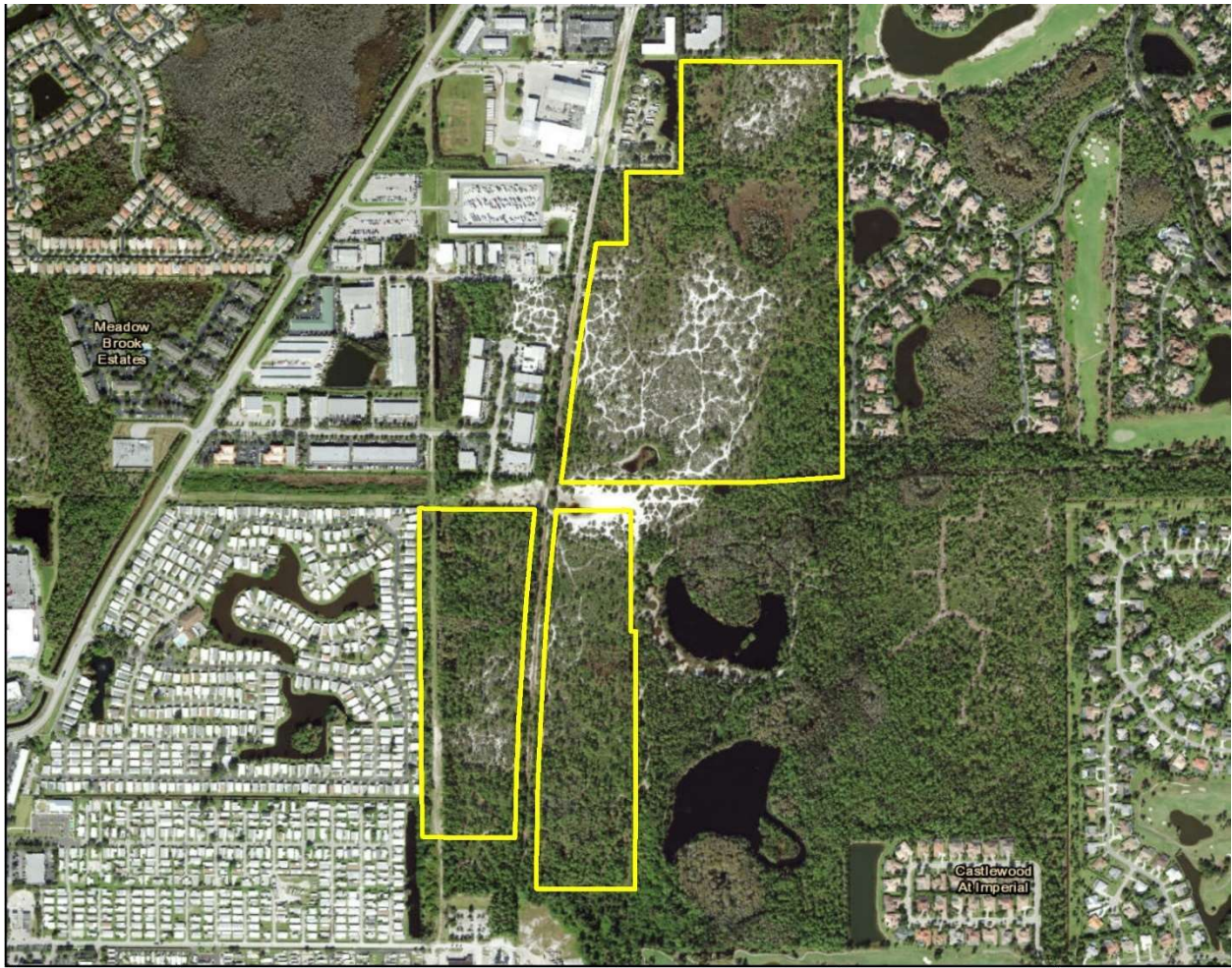
Site Description: The Railhead Scrub Preserve is an approximately 135-acre natural area located in the northwest corner of Collier County. This preserve is representative of several of the typical habitat types found in Collier County including seasonally flooded cypress, hydric flatwoods, pine flatwoods, and xeric oak scrub. This last habitat type is rapidly disappearing in Collier County due to its higher elevation and well drained soils, which make it ideal for development. For this reason, xeric oak scrub is a priority habitat for preservation in the Conservation Collier Program. This preserve contains one of the last few significant sized (approx. 50 acres) areas of xeric oak scrub in Collier County. Additionally, four hundred and nine (409) species of plants have been identified on the preserve site, including ten (10) species protected by the State of Florida.

The unique soils and scrub habitat found at Railhead Scrub Preserve are some of the last remaining remnants of this once widespread land cover found throughout Collier County. Many species of wildlife have been recorded on the preserve. Twenty-seven species of birds have been documented, including those that are wetland dependent, migratory, and protected. A resident red-tailed hawk is often seen circling and calling in the scrub area and nearby nesting bald eagles can be heard calling from the flatwoods on the edge of the preserve. White-tailed deer are routinely spotted along with Florida black bear, bobcat, raccoon, marsh rabbit, and armadillo. The preserve also provides habitat to a significant and dense population of Florida gopher tortoise, a threatened species protected by the State of Florida.

Public Amenities: Currently, there is not public access to this preserve, and it is considered a resource protection/restoration area.

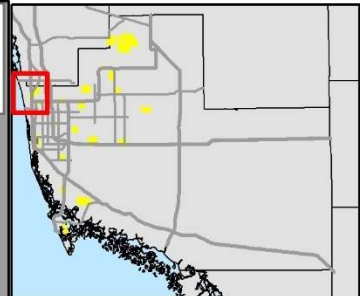
Proposed Amenities: The Veterans Memorial road extension will bisect the preserve and after it is built, public access will follow. A wildlife underpass will need to be installed to facilitate dispersal and habitat utilization of the preserve lands by listed species. The property will require fencing to exclude wildlife from crossing the road extension and direct them to the underpass.





Railhead Scrub Preserve

 Preserve Boundary



Rattlesnake Hammock Preserve

Click [here](#) for the Rattlesnake Hammock Preserve website.

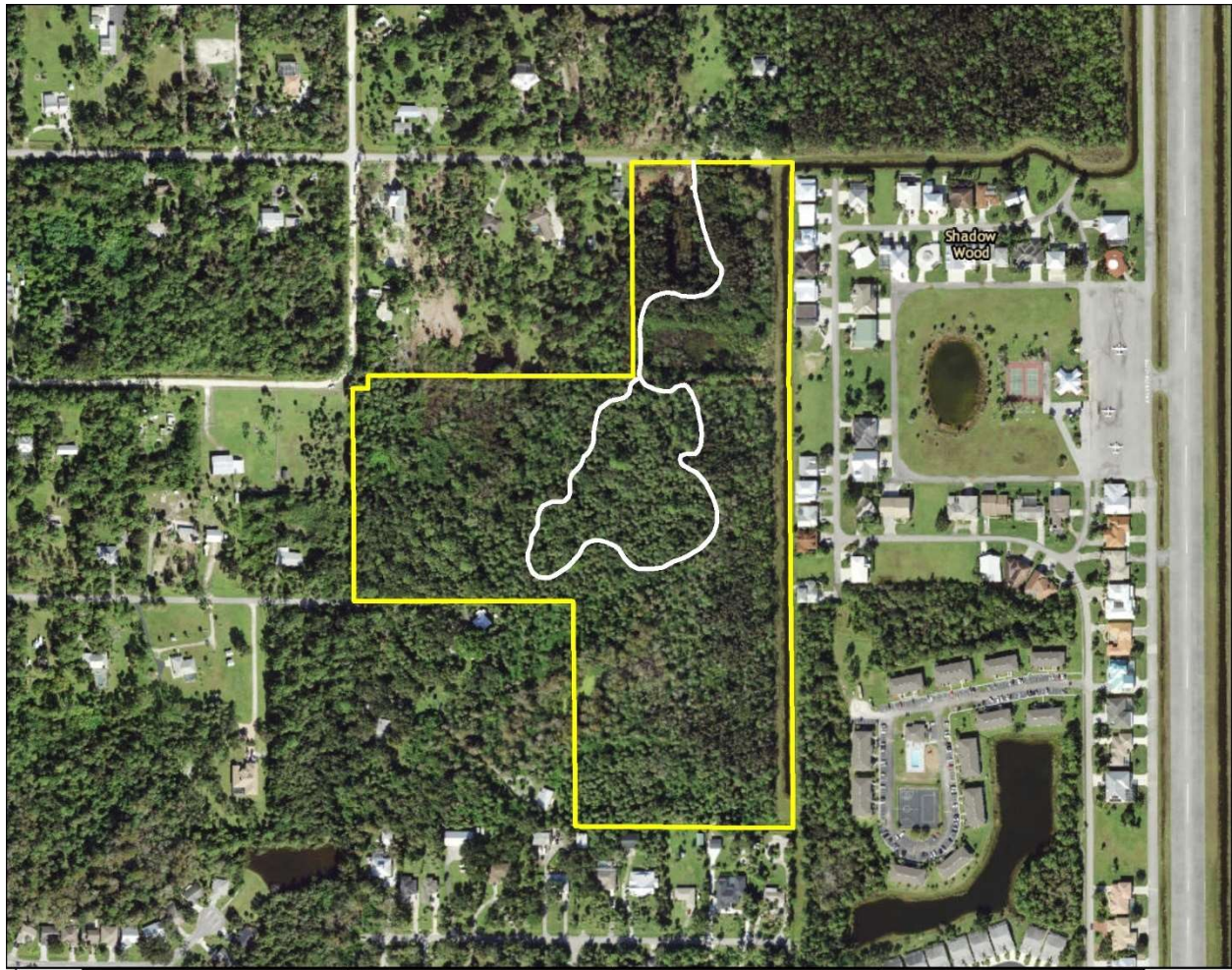
Site Description: Rattlesnake Hammock Preserve is made up of two parcels comprising 37.16 acres and is designated as mixed hardwood coniferous habitat. The preserve is characterized by a central oak/palm hammock bound by forested wetland hammocks. There are two depressional wetlands, one of manmade origin in the northern portion of the preserve. Listed plant species found on site include stiff-leaved wild pine (*Tillandsia fasciculata*), giant airplant (*Tillandsia utriculata*), and reflexed wild pine (*Tillandsia balbisiana*).

Many wildlife species have been documented on the preserve including the Florida panther (*Puma concolor coryi*), Florida black bear (*Ursus americanus floridanus*), bobcat (*Lynx rufus*), white-tailed deer (*Odocoileus virginianus*), and a variety of birds and reptiles.

Public Amenities: Currently, there is not public access to this preserve, but future public access is planned.

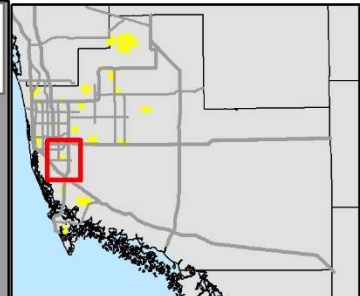
Proposed Amenities: Install ADA compatible parking and trails in the preserve, along with a viewing platform into the marsh. Staff will investigate adding a restroom facility to the preserve.





Rattlesnake Hammock Preserve

- Preserve Trails
- ▭ Preserve Boundary



Red Maple Swamp Preserve

Click [here](#) for the Red Maple Swamp Preserve website.

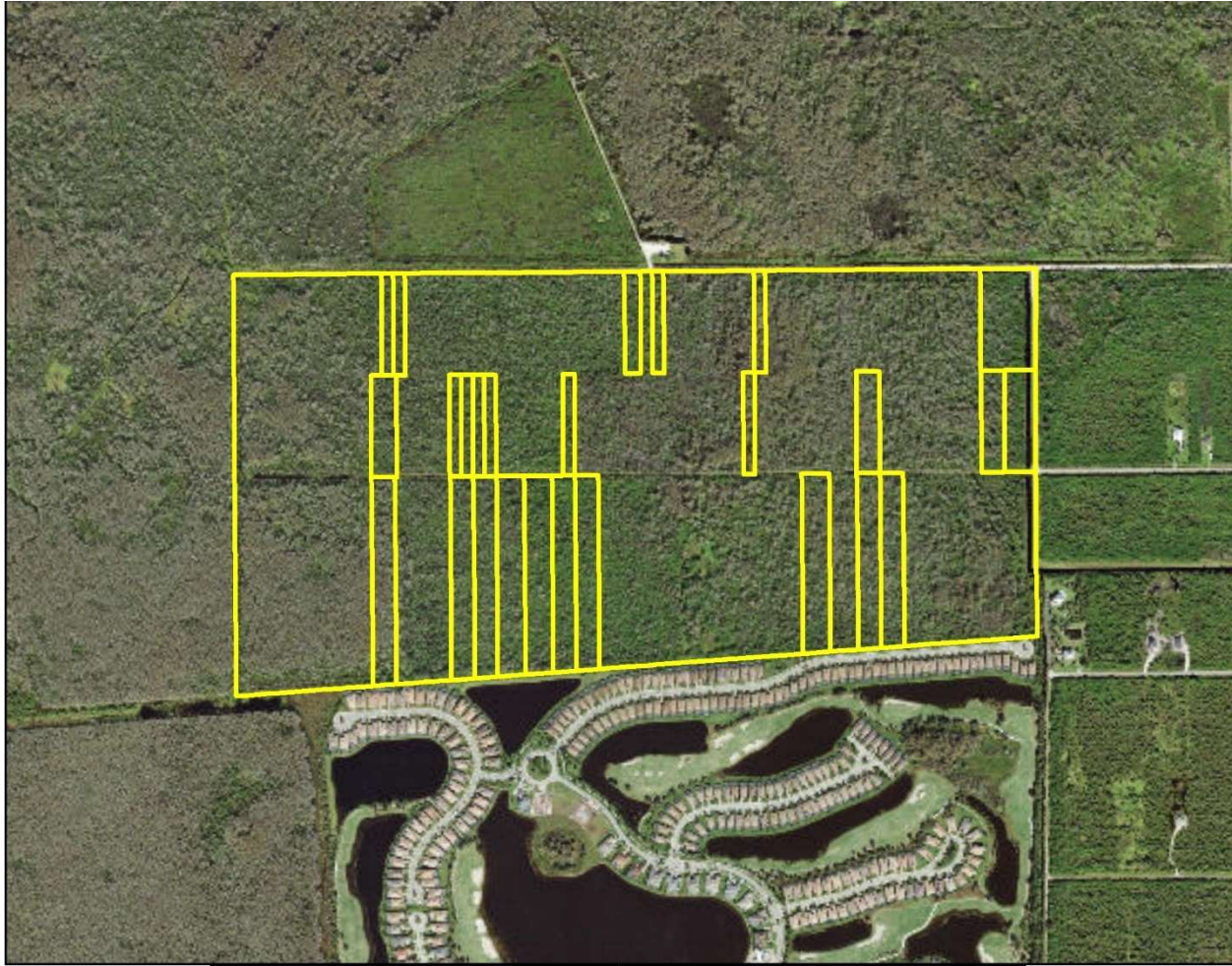
Site Description: Red Maple Swamp Preserve is one of two multi-parcel projects undertaken by the Conservation Collier Program. It is comprised of wetland hardwood forests. Approximately 236 acres of the 305.69-acre unit are currently owned by Collier County. Red Maple Swamp Preserve is an excellent example of a wetland hardwood forest community and contains many mature red maples in areas outside of those historically farmed. Even previously farmed areas show significant red maple re-growth.

Wild coco (*Elophia alta*), federally threatened, and royal fern (*Osmunda regalis*), commercially exploited, have been observed within the acquired properties. State and federally listed imperiled species observed utilizing the preserve include the woodstork (*Mycteria Americana*), little blue heron (*Egretta caerulea*), crested caracara (*Caracara cheriway*), Florida panther (*Puma concolor coryi*), Florida bonneted bat (*Eumops floridanus*), and American alligator (*Alligator mississippiensis*).

Public Amenities: Currently, there is not public access to this preserve, and it is considered a resource protection/restoration area.

Proposed Amenities: Install a small loop trail through the preserve that could serve as a “swamp walk” for users to experience a seasonally inundated cypress community.

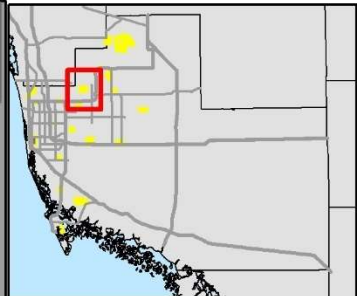




↑ 0 0.5 1 Miles

Red Maple Swamp Preserve

 Preserve Boundary



Winchester Head Preserve

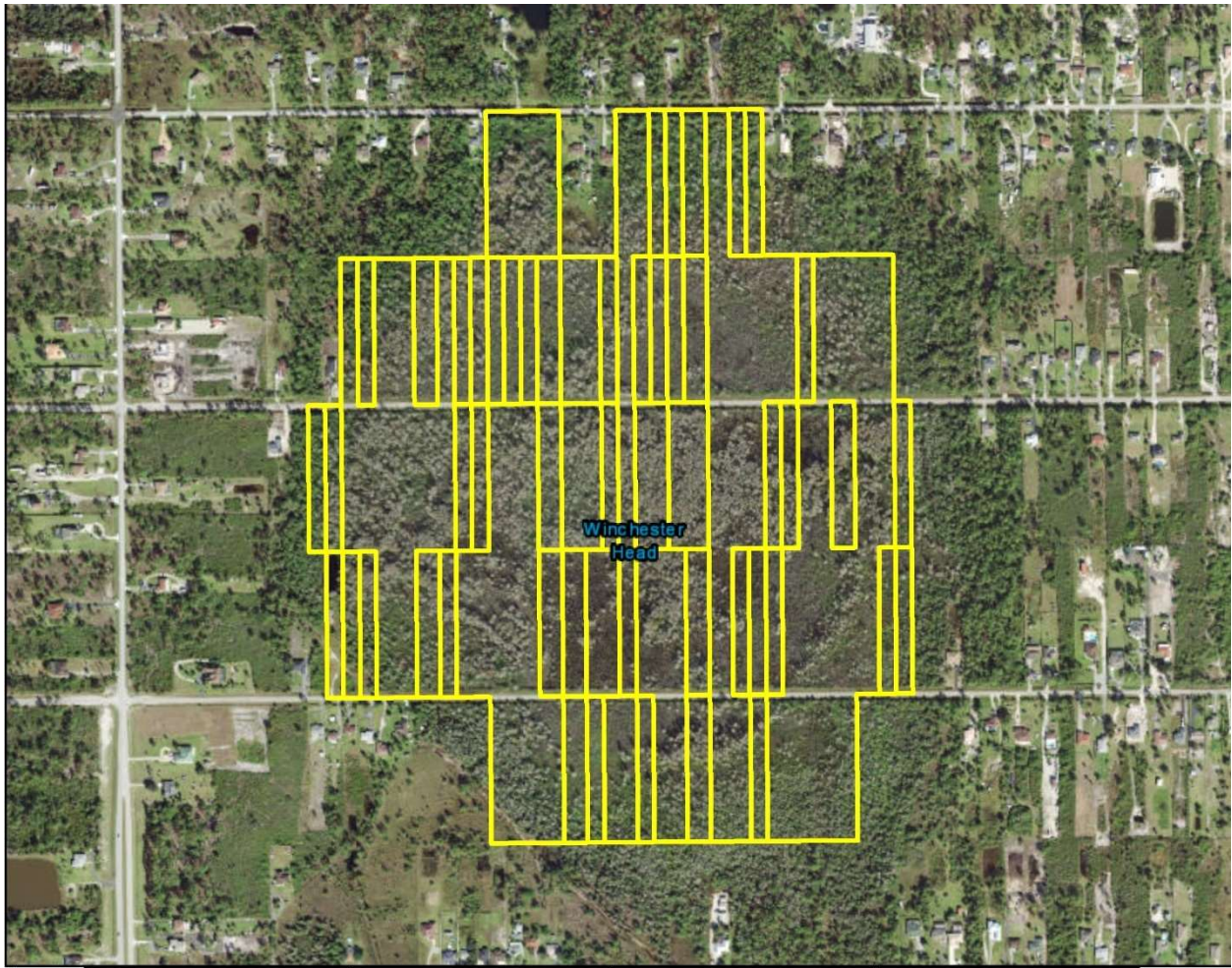
Click [here](#) for the Winchester Head Preserve website.

Site Description: Winchester Head is one of two multi-parcel projects undertaken by the Conservation Collier Program. The Winchester Head Project boundary encompasses 114 parcels totaling 157.53 acres. As of September 2020, 67 parcels or 94.5 acres (58%) have been acquired by Conservation Collier in a checkerboard fashion throughout the project area. Winchester Head is comprised of Mixed Wetland Hardwoods, Cypress, Pine, Cabbage Palm, and Freshwater Marsh. Compared to the 18-24 feet elevations of the lands surrounding Winchester Head, the natural depression of this cypress area, which sits at 15-17 feet below sea level, combined with the presence of hydric, poorly drained soils allows for water to collect and slowly percolate into the ground. Thus, Winchester Head is ideal for obligate and facultative wetland plant and animal species. Evidence onsite and data from the Southwest Florida Amphibian Monitoring Network 1 indicate that Winchester Head is used by wetland dependent species. Although it contributes only minimally to aquifer recharge, the area is a depressional feature in the landscape that holds water during the rainy season, enhancing water quality and offering flood protection to adjacent lands.

Public Amenities: Currently, there is not public access to this preserve, and it is considered a resource protection/restoration area.

Proposed Amenities: As remaining parcels are purchased to create a contiguous landscape; a seasonal trail and a birding tower could be installed.

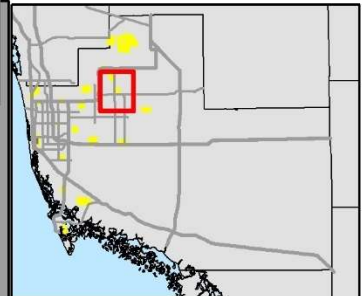




↑ 0 0.45 Miles 0.9

Winchester Head Preserve

 Preserve Boundary



Camp Keais Strand Preserve

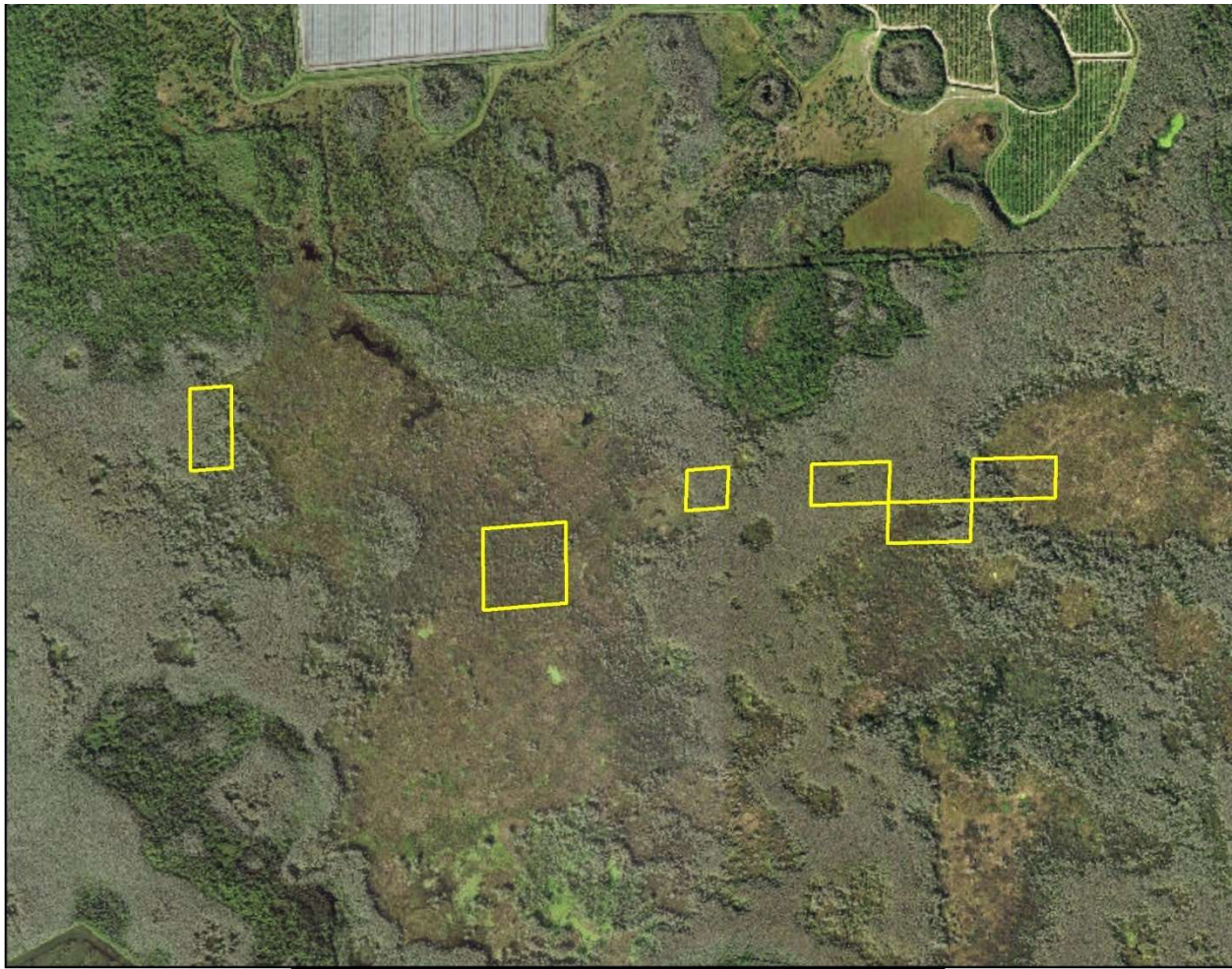
Click [here](#) for the Camp Keais Strand Preserve website.

Site Description: The Camp Keais Strand project consists of 6 parcels totaling 32.5 acres within the linear wetland feature known as Camp Keais Strand. The Strand is a Rural Lands Stewardship Area (RLSA) Flowway Stewardship Area (FSA). The Camp Keais Strand project parcels are located south of Oil Well Road and east of Desoto Boulevard; the Camp Keais Strand carries surface water from the Lake Trafford and Corkscrew Swamp areas southward through the Florida Panther National Wildlife Refuge, the Fakahatchee Strand Preserve State Park, and into the Gulf of Mexico at the Ten Thousand Islands National Wildlife Refuge in Collier County, Florida.

Public Amenities: Currently, there is no public access to this preserve, and it is considered a resource protection/restoration area.

Proposed Amenities: None; public access is not possible due to the remote location and lack of access roads.

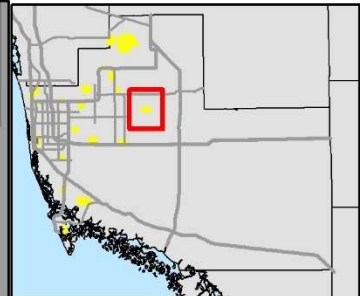




↑ 0 0.5 1 Miles

Camp Keais Preserve

 Preserve Boundary



Mcllvane Marsh Preserve

Click [here](#) for the Mcllvane Marsh Preserve website.

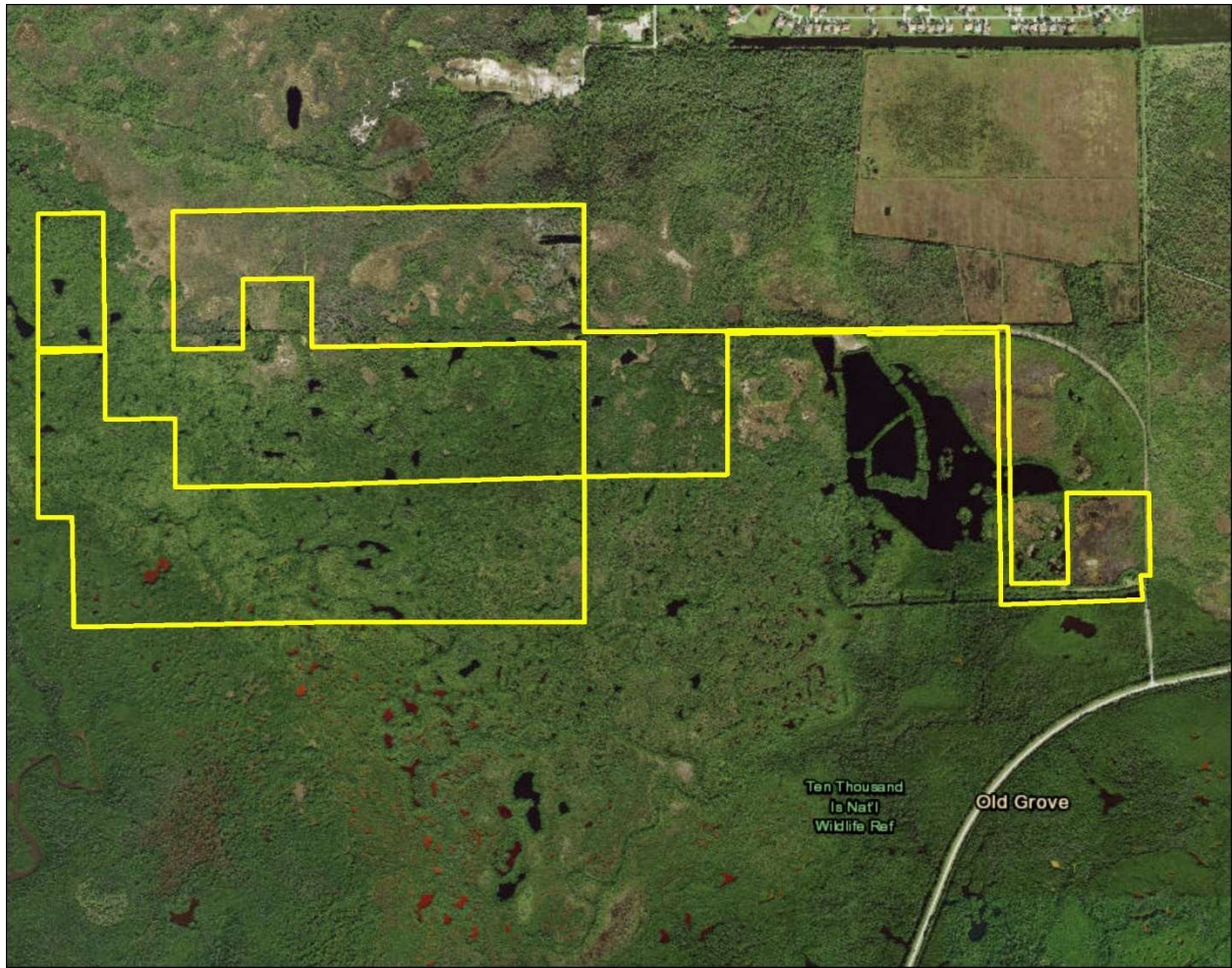
Site Description: The Mcllvane Marsh project consists of 9 properties totaling 379 acres acquired with funds from the Conservation Collier Program. There is additionally planned, yet unfunded, a Picayune Strand Restoration “protection feature” project involving enhancing existing culverts under the Tamiami Trail close to C.R. 92 and further spreading sheet flow into the Mcllvane Marsh area. Mcllvane Marsh is a tidally influenced wetland consisting primarily of open marsh and mangrove wetlands with small upland island areas, primarily on its northern and eastern edges. Approximately 15-acres of pine flatwood uplands exist on the north side of the marsh and 6 acres of cleared uplands exist on the eastern edge of the marsh where a communication tower site is located.

The area is home to listed species including American crocodile, American alligator, snowy egret, wood stork, tri-colored heron, osprey, little blue heron, bald eagle, everglades snail kite, Florida panther, and Florida black bear. Many other species of birds and amphibians also live within and utilize Mcllvane Marsh. Listed plant species observed onsite include state-threatened twisted airplant (*Tillandsia flexuosa*), Florida butterfly orchid (*Encyclia tampensis*), cardinal airplant (*Tillandsia fasciculata*), reflexed wild pine (*Tillandsia balbisiana*), and the endangered giant airplant (*Tillandsia utriculata*).

Public Amenities: Currently, there is not public access to this preserve, and it is considered a resource protection/restoration area.

Proposed Amenities: None. Currently, there is not a public thoroughfare that leads to the preserve.





↑ 0 0.5 1 Miles

McIlvane Marsh Preserve

 Preserve Boundary



Shell Island Preserve

Click [here](#) for the Shell Island Preserve website.

Site Description: The 112-acre Shell Island Preserve is located within the urban boundary of Collier County and is surrounded on the north, west and south sides by Rookery Bay National Estuarine Research Reserve. Shell Island Road transects the southeast corner of the property. The preserve contains mangrove forest, freshwater marsh, and salt marsh plant communities. A historic roadbed, County Road (CR) 848, cuts diagonally across the property. Except for the roadbed, which comprises approximately 6.31 acres, the property is entirely wetlands and is completely flooded during rainy season.

Native species present likely include large mammals traversing the property, including Florida panther (*Puma concolor coryi*), black bear (*Ursus americanus floridanus*), and bobcat (*Lynx rufus*). Also present are a diverse assemblage of invertebrates, reptiles and amphibians, wading birds and raptors including the bald eagle (*Haliaeetus leucocephalus*), osprey (*Pandion haliaetus*), roseate spoonbill (*Platalea ajaja*), and reddish egret (*Egretta rufescens*).

Public Amenities: Currently, there is not public access to this preserve, and it is considered a resource protection/restoration area. One mile west of the preserve on Shell Island Road is the Rookery Bay Briggs Boardwalk which is a ½-mile long boardwalk through similar habitat which is open for public use.

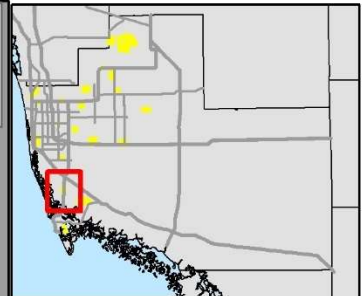
Proposed Amenities: None currently due to similar habitat available for access at nearby Rookery Bay, including a boardwalk/tower that looks out toward Shell Island.





Shell Island Preserve

 Preserve Boundary



Wet Woods Preserve

Click [here](#) for the Wet Woods Preserve website.

Site Description: The Wet Woods Preserve is a 26.77-acre natural area within the urban boundary of Collier County, Florida. The preserve contains various native plant communities, including mesic pine flatwoods, mangrove forests, and saltwater and freshwater marshes. The preserve consists of approximately 58% (± 15.53 acres) wetland habitats and approximately 42% (± 11.24 acres) upland habitat. Conservation, restoration and natural resource-based recreation are the designated uses of this property. Management activities allowed include those necessary to preserve, restore, secure and maintain this environmentally sensitive land for the benefit of present and future generations. Public use of the site must be consistent with these management goals.

Public Amenities: Currently, there is not public access to this preserve, and it is considered a resource protection/restoration area.

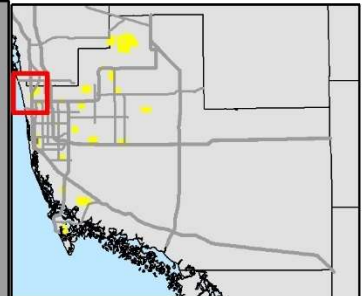
Proposed Amenities: No further amenities are proposed for this preserve at this time due to a lack of suitable access and parking for the public. If a solution to public access could be solved, public access could be possible.





Wet Woods Preserve

 Preserve Boundary



Attachments

Attachment 1: Preserve Amenities Spreadsheet

Site Name	Project	Project Description	Priority	Comments	Estimated Cost	Cost breakdown	Comments
ALLIGATOR FLAG PRESERVE	None		0	Open to the public no further amenities currently proposed			
CAMP KEAIS STRAND PROJECT	None		0	Resource Protection area - no access			
CARACARA PRAIRIE PRESERVE	If the program is able to acquire the 5 acres to the North of Caracara and add parking lot/bridge access		1		\$50,000	Parking lot clear and install \$20,000, Bridge/culvert \$30,000	
DR ROBERT H GORE III	500' ADA Boardwalk to wetland	would take visitors into the old growth cypress dome on the SW corner of the property for educational programs and ada access	2		\$410,000	*assuming \$820/linear foot	
	Parking lot		1	Requested \$15,000 for FY22	\$15,000		
	Boardwalk to interior/karst		2		\$15,000	*similar to pepper ranch bike trails	
	ADA Access	ADA opportunities to access this seasonally inundated site	1				
	Fishing dock and trail		3		\$20,000	\$15,000 for dock, 5,000 for trail	Can we get a permit to do this? To be researched if funding becomes available.
	Restroom	Possibilities: coordination with Cypress Cove Landkeepers, Port-a-potty, or restroom facility	3				
FRED W COYLE FREEDOM PARK PRESERVE	Boardwalk maintenance	Replace boardwalk for safety	1	Requested \$60,000 in FY22 budget for engineering report on boardwalk and any immediate repairs needed for safety concerns.	\$2,870,000	*3500 ft boardwalk at \$820 per foot	
	Signage	Replace signage	2		\$8,000	Large display boards could be phased	
CONSERVATION COLLIER OFFICES & STORAGE AREA	Offices, Storage Area, and Visitor Center	Add storage area for equipment	2		TBD	This is dependent on future land acquisitions and the growth of the program	Summer to discuss with Capitial Project Planning in FY22
	More office space for future staff		2	Further staff will be needed as more lands are acquired	TBD		
GORDON RIVER GREENWAY PARK PRESERVE	Boardwalk maintenance	Boardwalk maintenance for safety	1		\$3,242,471	Boardwalk initial install was \$820/foot, similar in pricing to clam pass boardwalk replacement cost	
	Lighting along CC Restoration Marsh	Add lighting to the unlit portion of the greenway	1		TBD		Staff will research if the Airport/FAA allow lights.
	Signage	Replace signage & partner (City of Naples) wayfinding			TBD	New Signage installed Jan 2021, cost includes wayfinding update only	Project on hold for now
LOGAN WOODS PRESERVE	None		0	Open to the public no further amenities currently proposed			
MCILVANE MARSH PROJECT	None		0	Resource Protection Area not open to the public			
NANCY PAYTON PRESERVE	Site security		1	Fencing	\$15,000		
	ADA parking and trails	crushed shell and 1 ADA parking space	1		\$20,000	*one ADA parking spot/crushed shell trail leading to picnic area	This is not the parking lot to the SDP
	Restroom	Possibilities: Port-a-potty, or restroom facility	3				
OTTER MOUND PRESERVE	None						
PANTHER WALK PRESERVE	None		0	Open to the public no further amenities currently proposed			
PEPPER RANCH PRESERVE (PRP)	Pole Barn repairs		1	Requested \$30,000 for FY22 budget	\$30,000		

	400' Boardwalk into Slough		3		\$250,000-\$328,000	*assuming \$820 per foot	
	Natural Playground		3		\$8,000		
	Single Vault Toilet at Group campsite		1		\$20,000	plus permitting USFWS might not allow?	
	Single Vault Toilet at Mountain Bike Trailhead		1		\$20,000	plus permitting	
	Non-potable water well at Group Campsite		1		\$5,000	plus permitting	
RAILHEAD SCRUB PRESERVE	Fencing	This property will require gopher tortoise fencing and other improvements related to future roadway. Existing fencing on the preserve will need to be removed and replaced as it is ineffective against trespassing and not conducive to wildlife movement	1	Currently not open to the public due to lack of access	\$75,000		In discussions with Transportation
	Wildlife underpass		1		TBD		
RED MAPLE SWAMP PRESERVE	ATV Trespass/Security Gates/fencing	Prevent atv access along the western boundary of the preserve	1	Resource Protection Area not open to the public	\$8,000		
	Seasonal trail and off-street parking		3				Added 8/26/2022 SCM
RIVERS ROAD PRESERVE	ADA Parking and Trails.		1	Existing parking & trails are not ADA	\$25,000	*one ADA parking spot/crushed trail leading to picnic area	
	Restroom	Possibilities: Port-a-potty, or restroom facility	3				
RATTLESNAKE HAMMOCK PRESERVE (FKA SD CORP)	Packed shell trail ADA compliant		1		\$15,000	*cost of Cocohatchee	
	Parking lot		1	Requested \$50,000 for FY22 budget	\$25,000 - 50000	*Otter mound was \$27,000, estimate to have paved parking* INCLUDE ADA PARKING SPOT	
	Fence and gate		1		\$25,000		
	Boardwalk platform into marsh		2		\$15,000	*cost of greenway fishing pier	
	Restroom	Port-a-potty					
SHELL ISLAND PRESERVE	None		0	Resource Protection Area not open to the public			
WET WOODS PRESERVE	PARKING LOT (property would need to be acquired first)		2		TBD		
	access bridge from US41		3		\$40,000		
	3/4 mile boardwalk		3	Currently, staff not supporting proposal due to cost and environmental impacts; to be discussed further. To be ranked by CCLAAC	\$3,247,200	*\$820 per linear foot	
WINCHESTER HEAD	Seasonal trail and off-street parking		2				Added 8/26/2022 SCM
	Boardwalk		3	To be discussed after all parcels acquired	TBD		
	Birding Tower		3				
				TOTAL	\$10,198,671		