

MAY, JUNE, & JULY 2022

BIG CYPRESS BASIN HYDROLOGIC REPORT



SUMMARY OF HYDROLOGIC CONDITIONS IN THE BIG CYPRESS BASIN

May, June, & July 2022

SUMMARY

May started with widespread beneficial rainfall which helped to alleviate the dry conditions that prevailed through the early portions of the year. The official wet season began on May 12th, approximately 2 weeks earlier than normal, which pushed the region's rainfall above average for May. As May ended, the 2022 rainfall deficit was eliminated and the Basin started accruing about an inch surplus.

As June began, eyes turned to the tropics at what later became Tropical Storm Alex approached the southwest coast of Florida. While rainfall totals were quite high from the storm, 6" - 8" areal average, the region still had ample room to accept the rainfall. Southern regions of the Basin received the highest totals with local maximum of around 13" in about 24 hours and average rainfall for the event everywhere else was close to six inches. The system handled the rainfall extremely well with no major exceedances from normal operational levels.

As the system recovered from the event, the western regions of South Florida remained the focus for rainfall. No major rainfall events occurred but there was almost no break from the daily heavy thunderstorm activity. Totals for June were approximately 132% of normal.

While the tropics remained quiet during July, the daily thunderstorm activity remained focused on the western side of the peninsula for the majority of the month. As the month ended, ample Saharan dust helped to limit the daily rainfall totals for the last week of the month, but total July rainfall still ended above normal.

BCB RAINFALL

May

As measured by twenty-four (24) reporting stations (ref. **Figures 1, 2, Table 1**), the basin-wide May monthly average was **5.2 inches (131% of normal)**, which is above the average 3.98 inches typically collected.

Based on collected gauge and radar data, the rainfall distribution across the Basin was fairly uniform aside from select few isolated areas in Picayune Strand Forest that received 8-9" of rainfall. **Figure 3a** shows the average rainfall for each of the Basin's watersheds based on gauge adjusted radar. The Fakahatchee basin received the lowest rainfall with about **3.7 inch** areal average across the watershed and the highest was the Henderson Creek basin with about **5.9 inches**. The Basin's total areal weighted average rainfall was **4.6 inches**. The month's lowest gauge total was collected at the Fakahatchee Strand HQ (Site R-5), which received **1.95 inches**. This month's highest rainfall was recorded at Bird Rookery (Site R-19), which received **8.76 inches**. The rainfall totals and their distribution across the BCB/Lower West Coast are shown on **Figure 3, 3a** and **4**.

February

As measured by twenty-four (24) reporting stations (ref. **Figures 1, 2, Table 1**), the basin-wide June monthly average was **13.41 inches (131% of normal)**, which is above the average 10.23 inches typically collected.

Based on collected gauge and radar data, the rainfall distribution across the Basin was not very uniform due to the early month potential tropical cyclone. The largest rainfall totals were at the southern end of the Basin with monthly totals in excess of 20", mostly due to the early month tropical rain event. **Figure 3a**

shows the average rainfall for each of the Basin's watersheds based on gauge adjusted radar. The Henderson Creek basin received the highest rainfall with about **15.9 inch** areal average across the watershed and the lowest was the Gordon River basin with about **10.0 inches**. The Basin's total areal weighted average rainfall was **14.5 inches**. The month's highest gauge total was collected at Dan House Prairie (Site R-6), which received **18.10 inches**. This month's lowest rainfall was recorded at Coco #1 (Site R-14), which received **8.7 inches**. The rainfall totals and their distribution across the BCB/Lower West Coast are shown on **Figure 3, 3a and 4**.

July

As measured by twenty-four (24) reporting stations (ref. **Figures 1, 2, Table 1**), the basin-wide July monthly average was **9.3 inches (106% of normal)**, which is above the average 8.8 inches typically collected.

Based on collected gauge and radar data, the rainfall distribution across the Basin was very uniform due to the daily widespread afternoon thunderstorm activity. **Figure 3a** shows the average rainfall for each of the Basin's watersheds based on gauge adjusted radar. The East Naples basin received the highest rainfall with about **12.8 inch** areal average across the watershed and the lowest was the OK slough basin with about **8.2 inches**. The Basin's total areal weighted average rainfall was **9.7 inches**. The month's highest gauge total was collected at Faka Union #5 (Site R-8), which received **14.3 inches**. This month's lowest rainfall was recorded at IFAS (Site R-14), which received **6.43 inches**. The rainfall totals and their distribution across the BCB/Lower West Coast are shown on **Figure 3, 3a and 4**.

BCB CANAL SYSTEMS

All of the BCB canals were transitioned to flood control mode in advance of the potential tropical cyclone in early June and was maintained throughout June and July. Canal levels have been maintained in normal operational levels as is appropriate for the hydrologic conditions. Canals levels were generally held between the 75th and 90th percentile during the May—July period (**Figure 4a**).

- **GOLDEN GATE SYSTEM**

Control structures in the Golden Gate Main canal system were operated in flood control mode. All water control structures were activity discharging for flood control since the potential tropical cyclone passed through in June (ref **Figure 5A & 5B**).

- **COCOCHATCHEE SYSTEM**

All portions of the Cocohatchee system were also transitioned to flood control mode ahead of the storm event and have maintained water levels between the 75th and 90th percentile except during times of higher flows and rainfall (ref **Figure 6A, 6B, 6C, & 6D**).

- **FAKA UNION SYSTEM**

With early season rainfall in the Faka Union basin, the system was transitioned to flood control operations approximately 1 month earlier than normal. Since then all structures have been maintained in flood control operations with levels between the 75th and 90th percentiles (ref **Figure 7A & 7B**).

- **HENDERSON CREEK SYSTEM**

Both control structures in Henderson Creek were opened for the tropical event in early June but

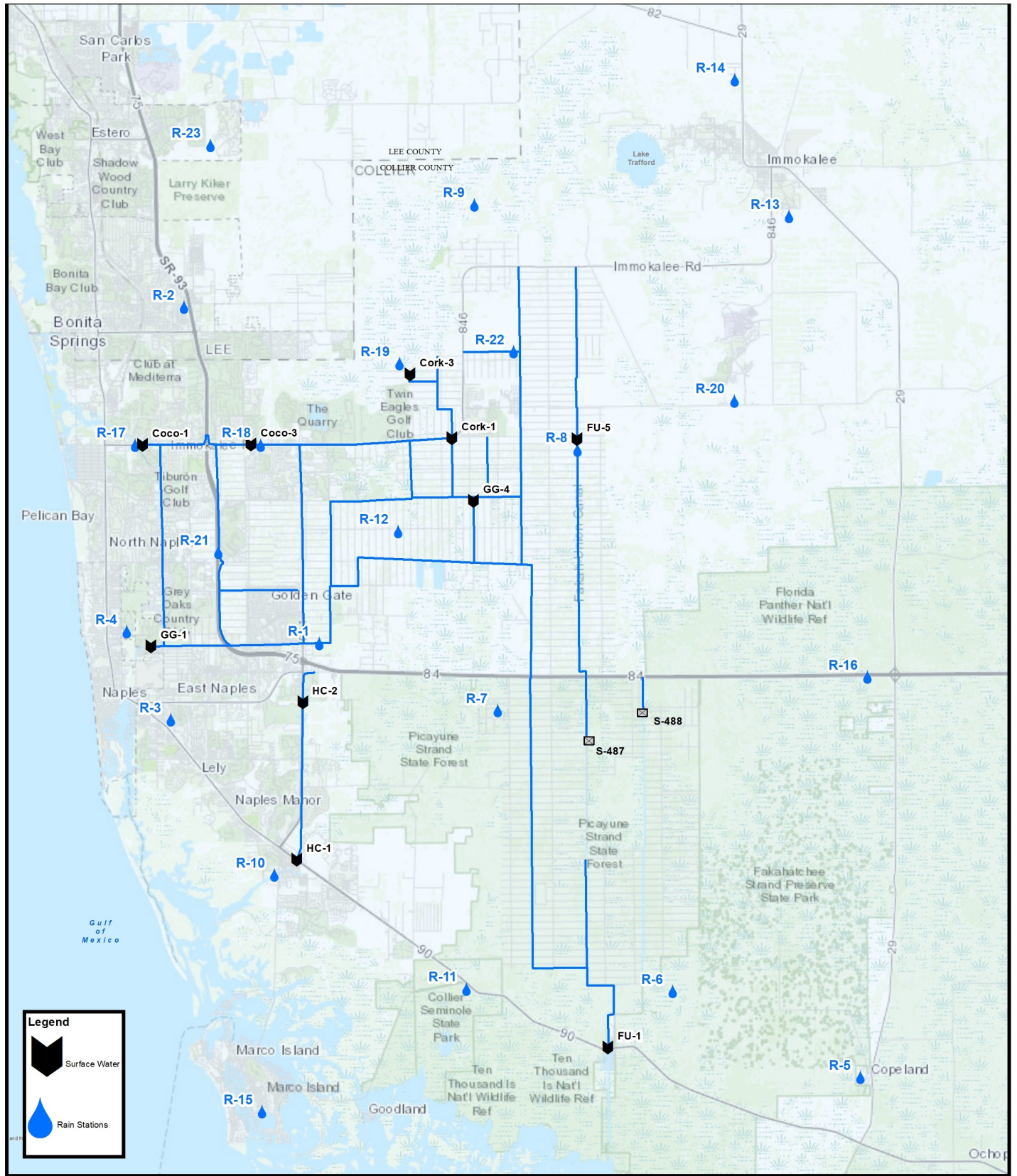
were then transitioned back to normal operations shortly after the event passed. Since then water levels have remained just above the 75th percentile in the canal with discharges starting from HC2 in mid-July . Flows from HC1 remain steady and fairly typical for wet season. (ref **Figure 8A & 8B**).

- **CORKSCREW SWAMP**

Figure 10 shows the historical trends for Corkscrew, Bird Rookery, and the Cork 3 structure and the 2022 corresponding levels. All sites experienced a rapid accession in water levels as the wet season started. Discharges into the Corkscrew canal started, like everywhere else in the Basin, approximately 1 month early. Flood control operations are currently balanced to maintain Corkscrew canal levels for flood control, but not too low to have an impact in upstream wetlands in Bird Rookery Swamp. Lake Trafford levels continue increase and are near the 90th percentile as July ended.

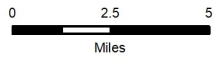
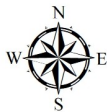
BIG CYPRESS BASIN & LOWER WEST COAST GROUNDWATER LEVELS

The current reporting (08/01/2022) for the Lower West Coast [LWC] indicate steady groundwater trends for July. All wells recovered quickly in May and June from the low stages in early 2022. All reporting wells are now in the normal (green) indicator levels. Most wells are above average for the end of July with some even above the 75th percentile (ref. **Table 2**).



DISCLAIMER
 Any information, including, but not limited to software and data, received from the South Florida Water Management District ("District") in fulfillment of a request is provided "AS IS" without warranty of any kind, and the District expressly disclaims all express and implied warranties, including but not limited to the implied warranties of merchantability and fitness for a particular purpose. The District does not warrant, guarantee, or make any representations regarding the use, or the results of the use, of the information provided to you by the District in terms of correctness, accuracy, reliability, timeliness or otherwise. The entire risk as to the results and performance of any information obtained from the District is entirely assumed by the recipient.

This map is a conceptual tool utilized for project development only. This map is not self-executing or binding, and does not otherwise affect the interests of any persons including any vested rights or existing uses of real property.



BIG CYPRESS BASIN
 SFWMD
 2660 Horseshoe Dr. N.
 Naples, Florida 34104
 239-263-7615

FIGURE 1

Hydrologic Station Map

Collier County, Florida



TABLE 1
RAINFALL REPORT - MAY 2022
DISTRICT/BASIN RAINFALL STATIONS
 (ALL NUMBERS ARE IN INCHES)

STATION INDEX NO.	STATION NAME	MAY 2022	LONG TERM MONTHLY AVERAGE	MONTHLY DIFFERENCE	CALENDAR YEAR 2022 CUMULATIVE TOTAL	AVERAGE CALENDAR YEAR TO DATE	YEAR TO DATE DIFFERENCE
R-1	GG#3	6.99	5.70	1.29	15.43	12.98	2.45
R-2	BONITA SPRINGS WATER PLANT	5.32	3.35	1.97	9.56	11.61	-2.05
R-3	COLLIER COUNTY COURTHOUSE	4.51	3.75	0.76	9.97	11.87	-1.90
R-4	FREEDOM PARK	5.81	4.55	1.26	10.83	12.00	-1.17
R-5	FAKAHATCHEE STRAND HQ	1.95	4.75	-2.80	10.23	12.97	-2.74
R-6	DAN HOUSE PRAIRIE	4.40	3.55	0.85	9.23	10.56	-1.33
R-7	SGGE WEATHER STATION	7.42	4.67	2.75	23.33	11.93	11.40
R-8	FAKA UNION #5	4.85	4.85	0.00	17.94	13.21	4.73
R-9	CORKSCREW SWAMP NORTH END	4.23	3.39	0.84	10.10	10.77	-0.67
R-10	ROOKERY BAY HQ	5.15	3.41	1.75	12.76	11.00	1.76
R-11	COLLIER SEMINOLE STATE PARK	4.46	3.51	0.95	9.47	11.52	-2.05
R-12	G.G. FIRE STATION	7.41	4.00	3.41	14.05	12.50	1.55
R-13	IMMOKALEE LANDFILL	5.57	4.39	1.18	11.37	13.30	-1.93
R-14	IFAS	5.11	4.06	1.05	11.29	13.08	-1.79
R-15	MARCO R.O. PLANT	2.17	3.15	-0.98	5.27	11.92	-6.65
R-16	FAKAHATCHEE STRAND NORTH END	3.82	5.05	-1.23	18.82	14.96	3.86
R-17	COCO#1	3.38	2.82	0.56	10.32	10.54	-0.22
R-18	COCO#3	4.37	3.21	1.16	10.12	10.78	-0.66
R-19	BIRD ROOKERY	8.76	4.02	4.74	14.54	9.64	4.90
R-20	AVE MARIA	3.59	4.44	-0.85	8.46	13.40	-4.94
R-21	I75W2	6.98	4.28	2.70	13.27	10.17	3.10
R-22	GG#7	5.99	4.24	1.75	17.92	9.63	8.29
R-23	FPWX	6.81	2.37	4.44	13.00	10.55	2.45
R-24	DSOTO10	6.30	New Site	New Site	New Site	No Historical Data	

AVERAGES	5.22	3.98	1.24	12.49	11.78	0.71
----------	------	------	------	-------	-------	------

RAINFALL REPORT - JUNE 2022
DISTRICT/BASIN RAINFALL STATIONS
 (ALL NUMBERS ARE IN INCHES)

STATION INDEX NO.	STATION NAME	JUNE 2022	LONG TERM MONTHLY AVERAGE	MONTHLY DIFFERENCE	CALENDAR YEAR 2022 CUMULATIVE TOTAL	AVERAGE CALENDAR YEAR TO DATE	YEAR TO DATE DIFFERENCE
R-1	GG#3	12.55	12.68	-0.13	27.98	25.66	2.32
R-2	BONITA SPRINGS WATER PLANT	17.17	8.45	8.72	26.73	20.06	6.67
R-3	COLLIER COUNTY COURTHOUSE	11.10	8.42	2.68	21.07	20.29	0.78
R-4	FREEDOM PARK	10.87	10.12	0.75	21.70	22.13	-0.43
R-5	FAKAHATCHEE STRAND HQ	13.97	11.07	2.90	24.20	24.03	0.17
R-6	DAN HOUSE PRAIRIE	18.10	9.01	9.09	27.33	19.57	7.76
R-7	SGGE WEATHER STATION	16.84	11.35	5.49	40.17	23.28	16.89
R-8	FAKA UNION #5	13.41	13.01	0.40	31.35	26.22	5.13
R-9	CORKSCREW SWAMP NORTH END	13.75	11.52	2.23	23.85	22.30	1.55
R-10	ROOKERY BAY HQ	13.07	9.55	3.52	25.83	20.55	5.28
R-11	COLLIER SEMINOLE STATE PARK	13.90	10.01	3.89	23.37	21.53	1.84
R-12	G.G. FIRE STATION	14.11	9.95	4.16	28.16	22.45	5.71
R-13	IMMOKALEE LANDFILL	12.13	8.84	3.29	23.50	22.14	1.36
R-14	IFAS	17.53	8.73	8.80	28.82	21.81	7.01
R-15	MARCO R.O. PLANT	15.88	9.12	6.76	21.15	21.04	0.11
R-16	FAKAHATCHEE STRAND NORTH END	9.28	10.50	-1.22	28.10	25.46	2.64
R-17	COCO#1	8.74	8.31	0.43	19.06	18.86	0.20
R-18	COCO#3	11.67	8.63	3.05	21.79	19.40	2.39
R-19	BIRD ROOKERY	14.50	13.66	0.84	29.04	23.30	5.74
R-20	AVE MARIA	12.16	8.74	3.42	20.62	22.14	-1.52
R-21	I75W2	11.10	11.99	-0.89	24.37	22.17	2.20
R-22	GG#7	10.92	12.05	-1.13	28.84	21.68	7.16
R-23	FPWX	13.93	9.68	4.25	26.93	20.23	6.70
R-24	DSOTO10	15.26	New Site	New Site	New Site	No Historical Data	

AVERAGES	13.41	10.23	3.18	25.82	22.01	3.81
----------	-------	-------	------	-------	-------	------

RAINFALL REPORT - JULY 2022
DISTRICT/BASIN RAINFALL STATIONS
 (ALL NUMBERS ARE IN INCHES)

STATION INDEX NO.	STATION NAME	JULY 2022	LONG TERM MONTHLY AVERAGE	MONTHLY DIFFERENCE	CALENDAR YEAR 2022 CUMULATIVE TOTAL	AVERAGE CALENDAR YEAR TO DATE	YEAR TO DATE DIFFERENCE
R-1	GG#3	12.74	8.76	3.98	40.72	34.41	6.31
R-2	BONITA SPRINGS WATER PLANT	9.83	8.12	1.71	36.56	28.17	8.39
R-3	COLLIER COUNTY COURTHOUSE	13.83	8.35	5.49	34.90	28.64	6.27
R-4	FREEDOM PARK	10.13	9.62	0.51	31.83	31.74	0.09
R-5	FAKAHATCHEE STRAND HQ	5.03	9.12	-4.09	29.23	33.15	-3.92
R-6	DAN HOUSE PRAIRIE	7.64	8.35	-0.71	34.97	27.92	7.05
R-7	SGGE WEATHER STATION	10.69	9.13	1.56	50.86	32.41	18.45
R-8	FAKA UNION #5	14.28	9.50	4.78	45.63	35.72	9.91
R-9	CORKSCREW SWAMP NORTH END	9.20	7.85	1.35	33.05	30.14	2.91
R-10	ROOKERY BAY HQ	8.90	8.58	0.32	34.73	29.14	5.59
R-11	COLLIER SEMINOLE STATE PARK	11.73	8.77	2.96	35.10	30.31	4.79
R-12	G.G. FIRE STATION	8.56	10.28	-1.72	36.72	32.73	3.99
R-13	IMMOKALEE LANDFILL	8.57	7.88	0.69	32.07	30.02	2.05
R-14	IFAS	6.43	7.29	-0.86	35.25	29.10	6.15
R-15	MARCO R.O. PLANT	6.84	7.63	-0.79	27.99	28.68	-0.69
R-16	FAKAHATCHEE STRAND NORTH END	7.19	9.35	-2.16	35.29	34.81	0.48
R-17	COCO#1	7.06	7.77	-0.71	26.12	26.62	-0.50
R-18	COCO#3	8.01	10.30	-2.29	29.80	29.70	0.10
R-19	BIRD ROOKERY	8.58	11.19	-2.61	37.62	34.49	3.13
R-20	AVE MARIA	6.47	8.07	-1.60	27.09	30.21	-3.12
R-21	I75W2	10.24	8.71	1.53	34.61	30.87	3.74
R-22	GG#7	14.05	9.83	4.22	42.89	31.51	11.38
R-23	FPWX	7.09	8.67	-1.58	34.02	28.91	5.11
R-24	DSOTO10	10.14	New Site	New Site	New Site	No Historical Data	

AVERAGES	9.30	8.83	0.47	35.09	30.84	4.25
----------	------	------	------	-------	-------	------

BCB ANNUAL RAINFALL
MONTHLY AVERAGE & HISTORICAL AVERAGE TRENDS
(FROM BCB RAINFALL GAUGE DATA)

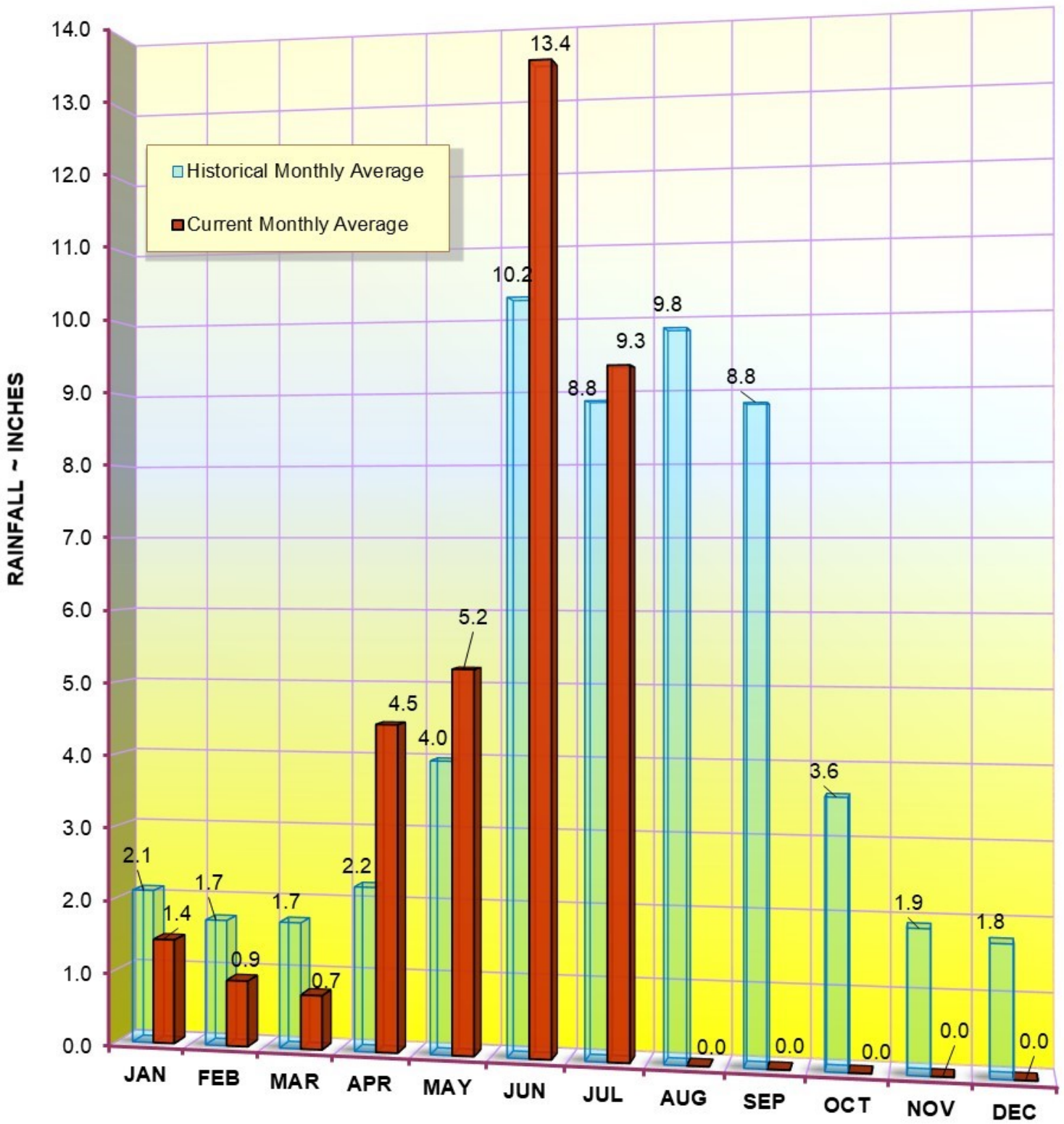


FIGURE 2
BCB GAUGE RAINFALL
MONTHLY AVERAGES THROUGH JULY 2022

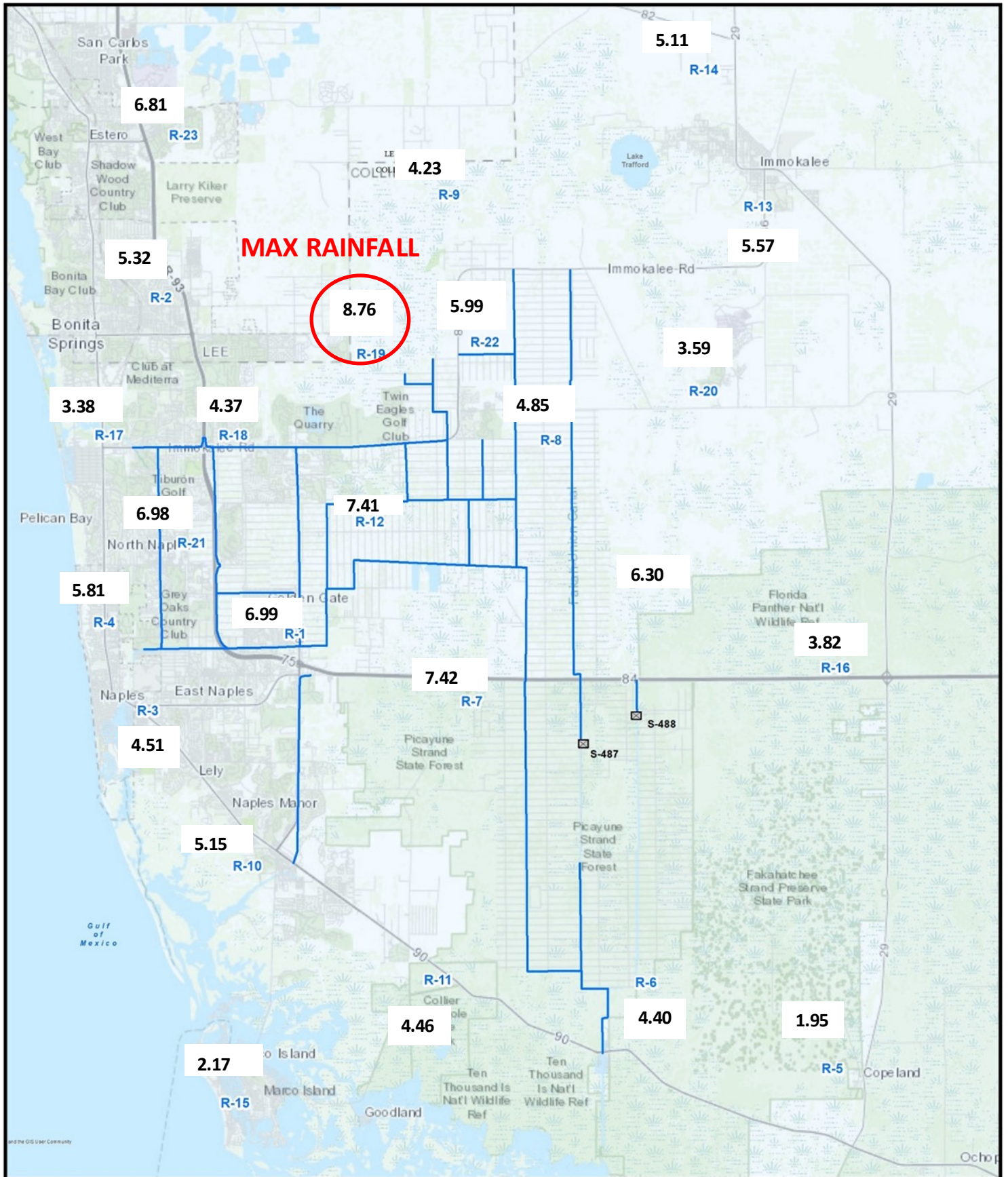


FIGURE 3
BCB RAINFALL DISTRIBUTION
MAY 2022

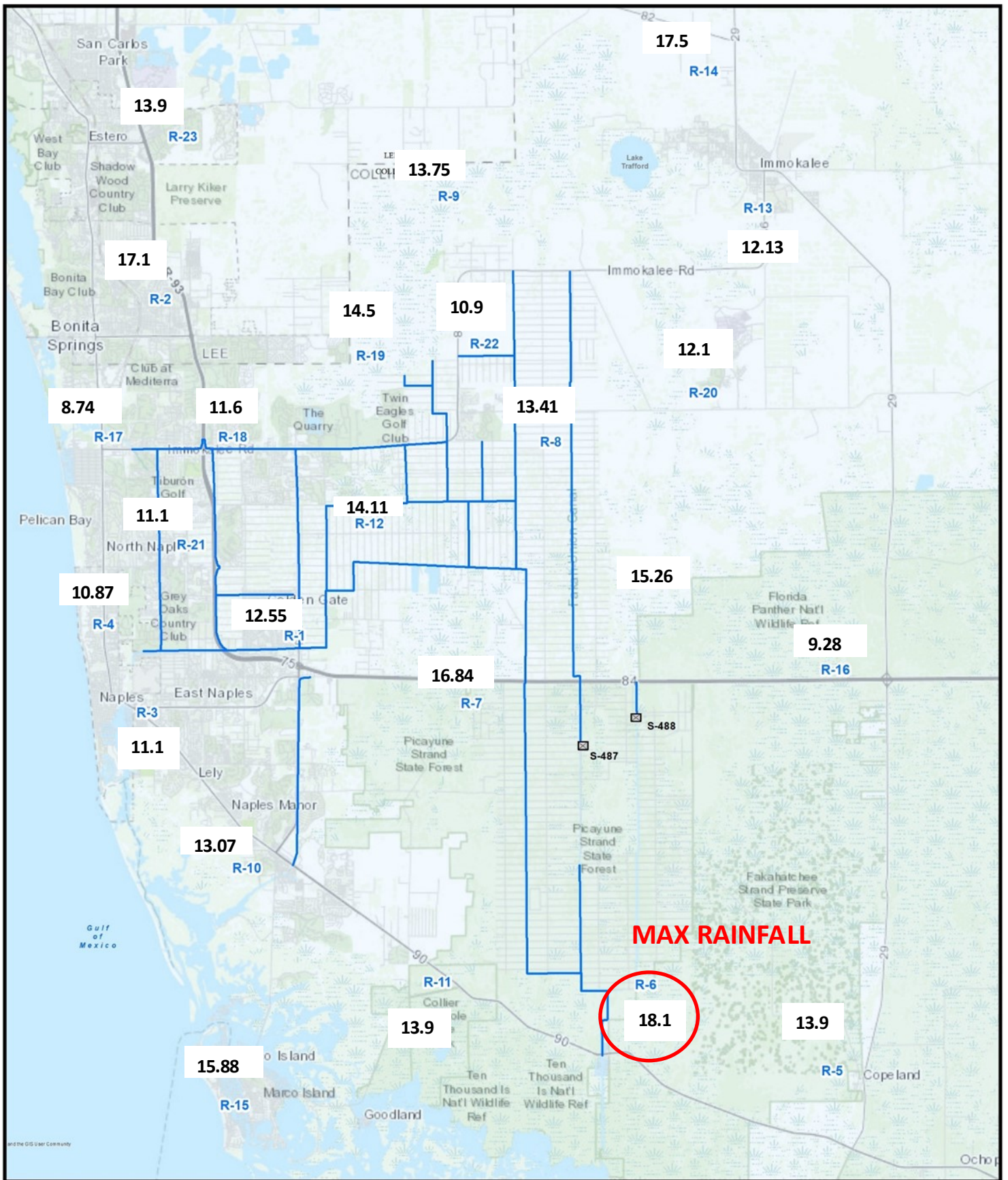


FIGURE 3
BCB RAINFALL DISTRIBUTION
JUNE 2022

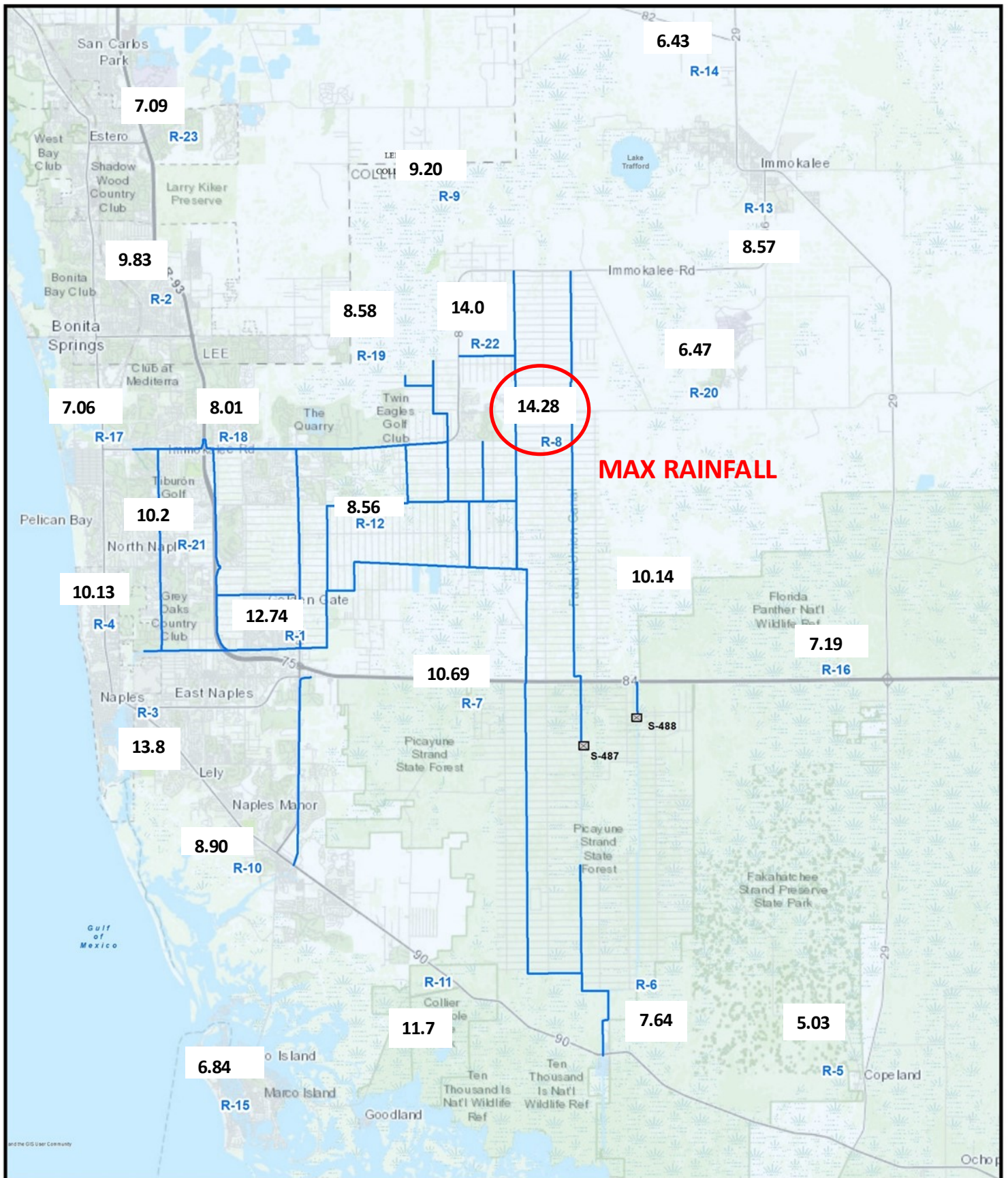


FIGURE 3
BCB RAINFALL DISTRIBUTION
JULY 2022

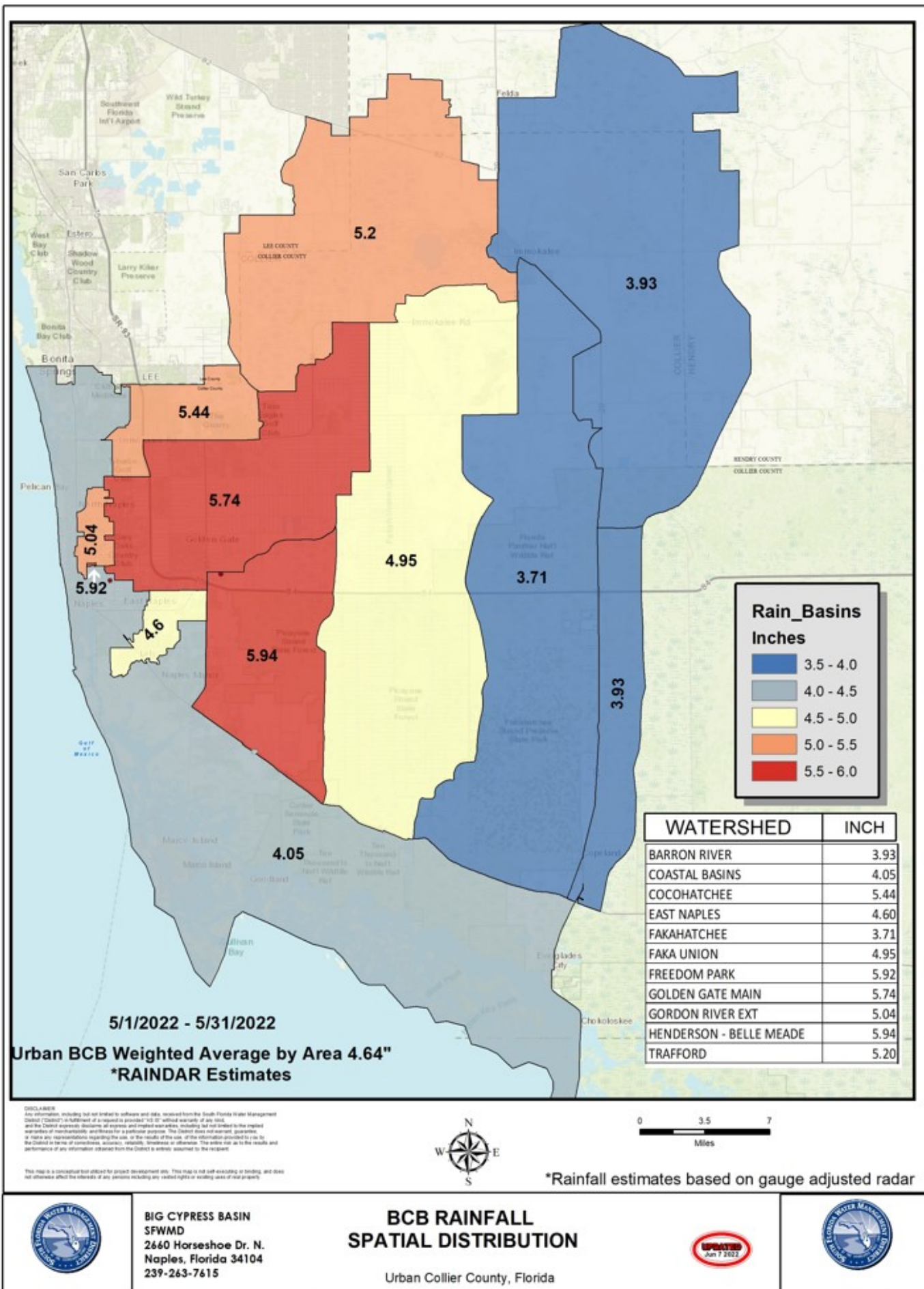


FIGURE 3a

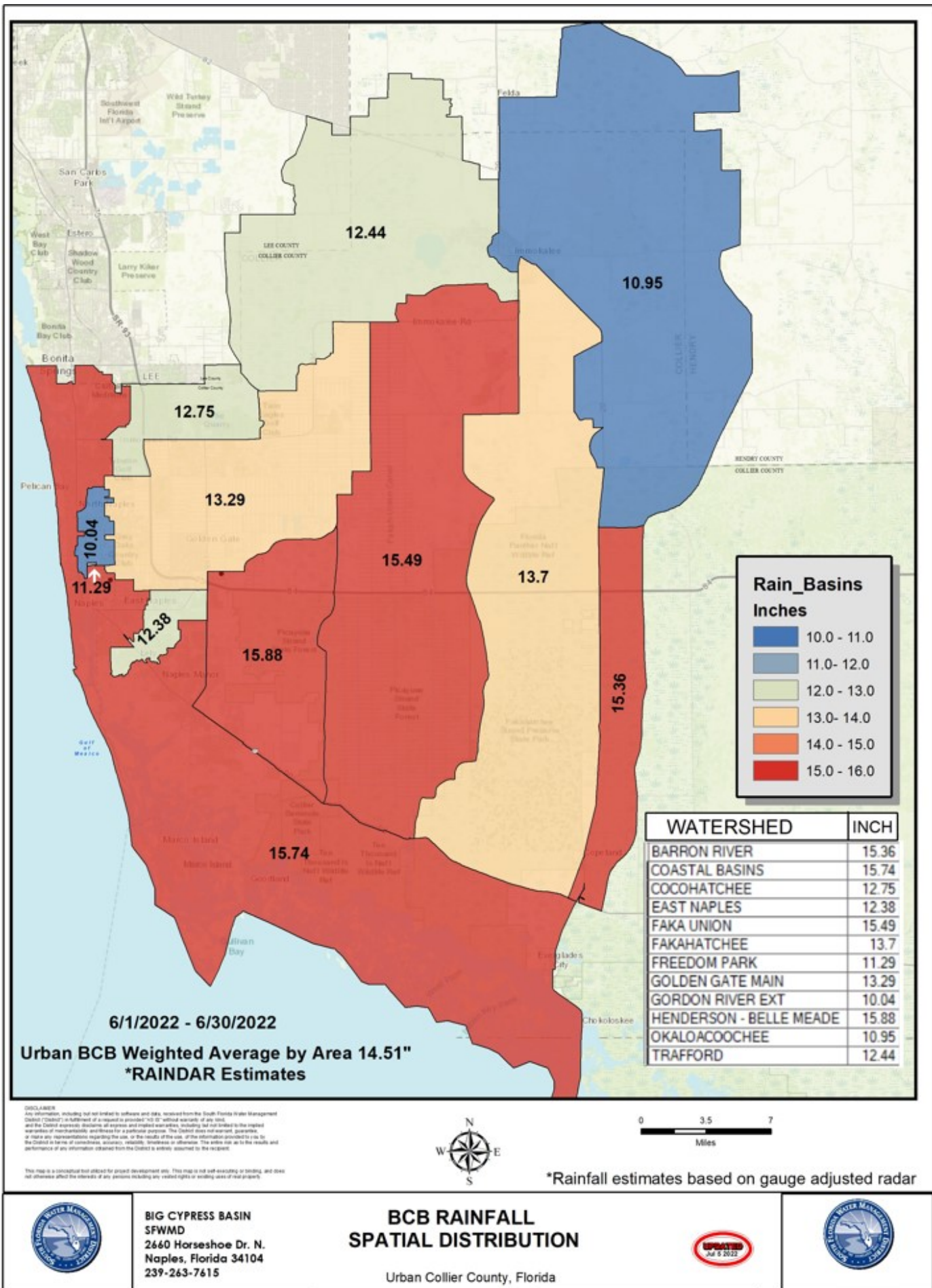
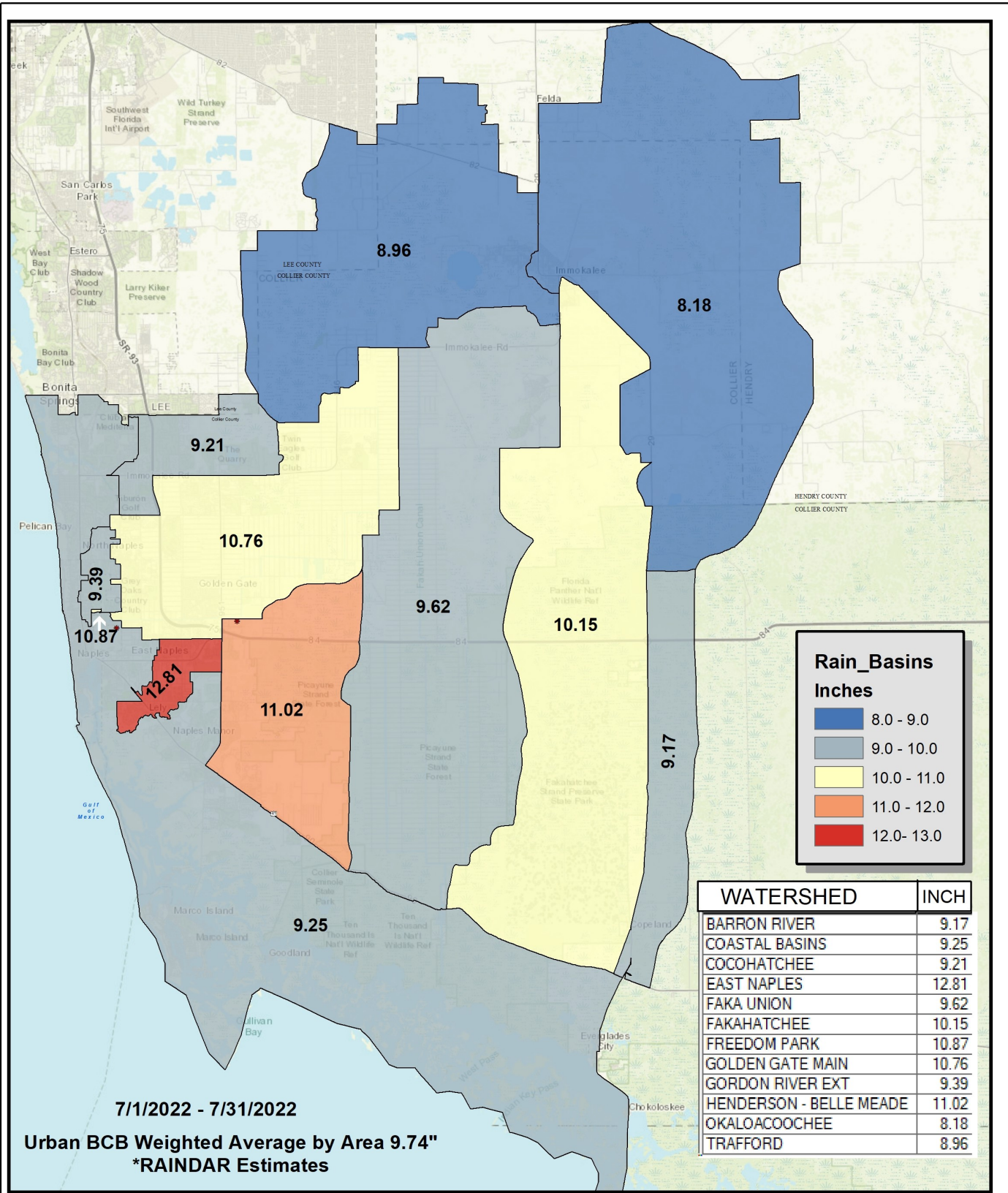
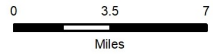


FIGURE 3a



DISCLAIMER
 Any information, including but not limited to software and data, received from the South Florida Water Management District ("District") in fulfillment of a request is provided "AS IS" without warranty of any kind, and the District expressly disclaims all express and implied warranties, including but not limited to the implied warranties of merchantability and fitness for a particular purpose. The District does not warrant, guarantee, or make any representations regarding the size, or the results of the use, of the information provided to you by the District in terms of correctness, accuracy, reliability, timeliness or otherwise. The entire risk as to the results and performance of any information obtained from the District is entirely assumed by the recipient.

This map is a conceptual tool utilized for project development only. This map is not self-executing or binding, and does not otherwise affect the interests of any person including any vested rights or existing uses of real property.



*Rainfall estimates based on gauge adjusted radar

	<p>BIG CYPRESS BASIN SFWM D 2660 Horseshoe Dr. N. Naples, Florida 34104 239-263-7615</p>	<p>BCB RAINFALL SPATIAL DISTRIBUTION</p>		
--	---	---	--	--

Urban Collier County, Florida

FIGURE 3a

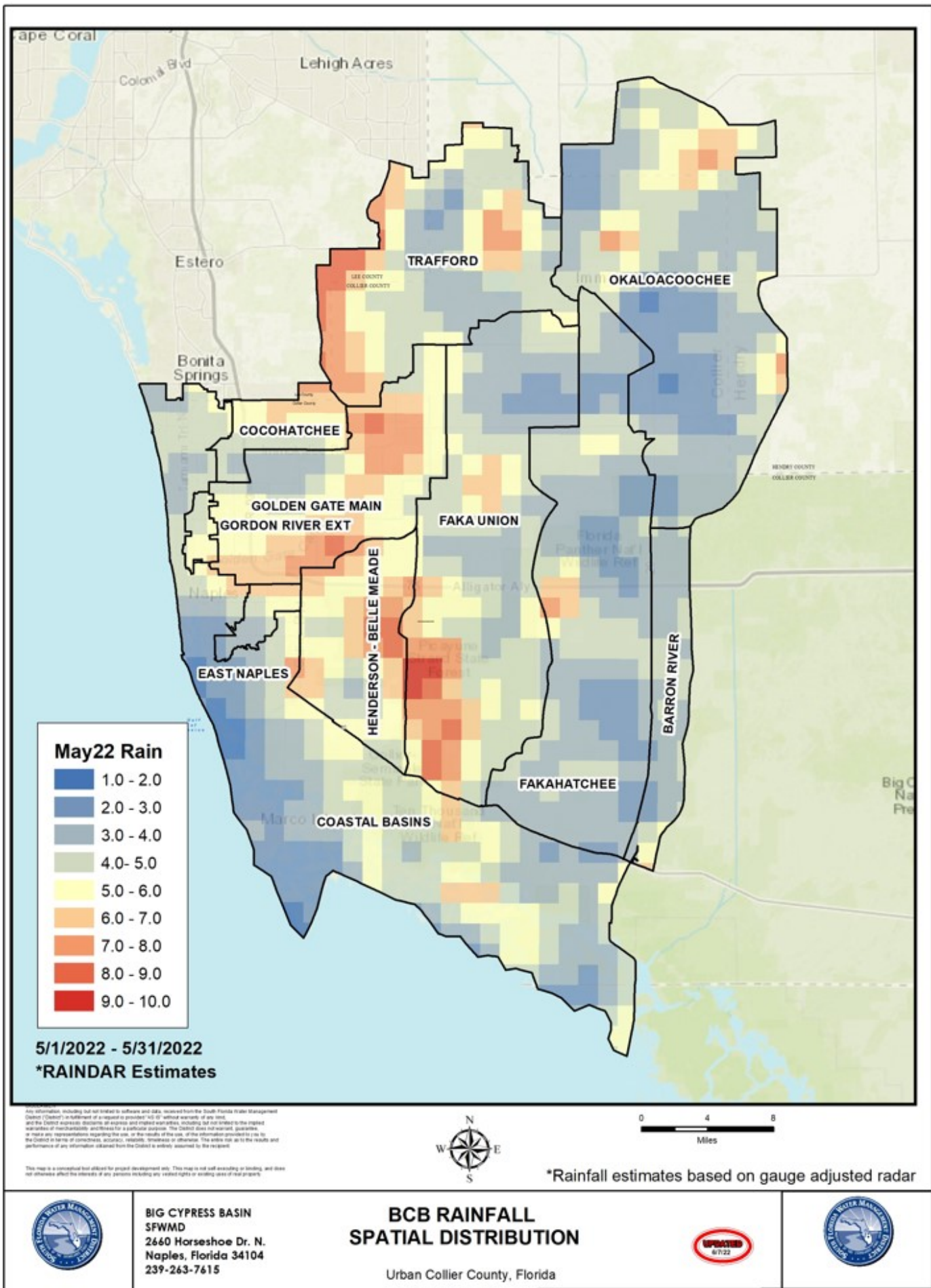


FIGURE 4

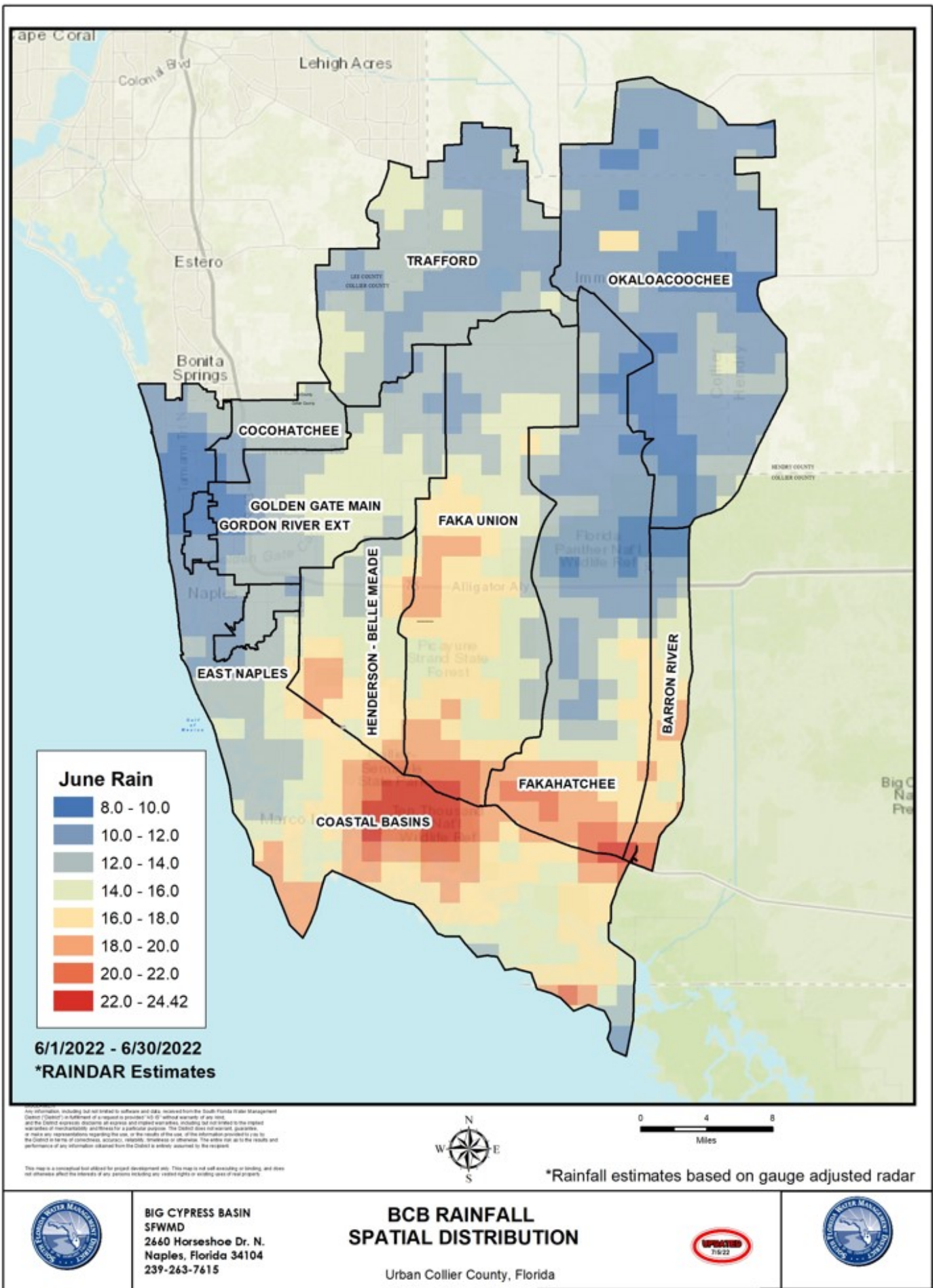
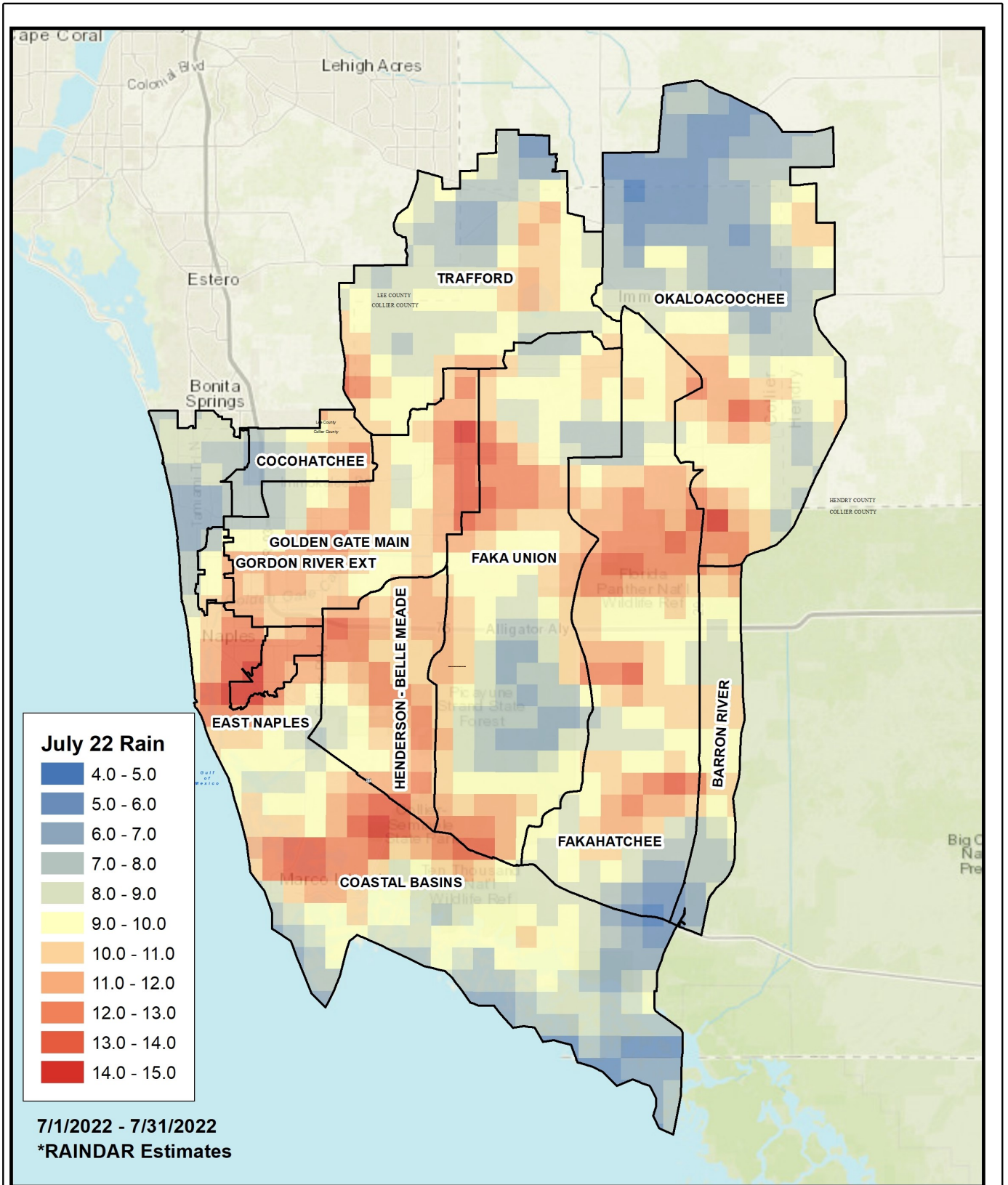
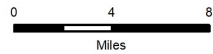
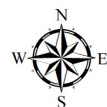


FIGURE 4



DISCLAIMER
Any information, including but not limited to software and data, received from the South Florida Water Management District ("District") in fulfillment of a request is provided "AS IS" without warranty of any kind, and the District expressly disclaims all express and implied warranties, including but not limited to the implied warranties of merchantability and fitness for a particular purpose. The District does not warrant, guarantee, or make any representations regarding the use, or the results of the use, of the information provided to you by the District in terms of completeness, accuracy, reliability, timeliness or otherwise. The entire risk as to the results and performance of any information obtained from the District is entirely assumed by the recipient.

This map is a conceptual tool utilized for project development only. This map is not self-executing or binding, and does not otherwise affect the interests of any persons including any vested rights or existing uses of real property.



*Rainfall estimates based on gauge adjusted radar



BIG CYPRESS BASIN
SFWMD
2660 Horseshoe Dr. N.
Naples, Florida 34104
239-263-7615

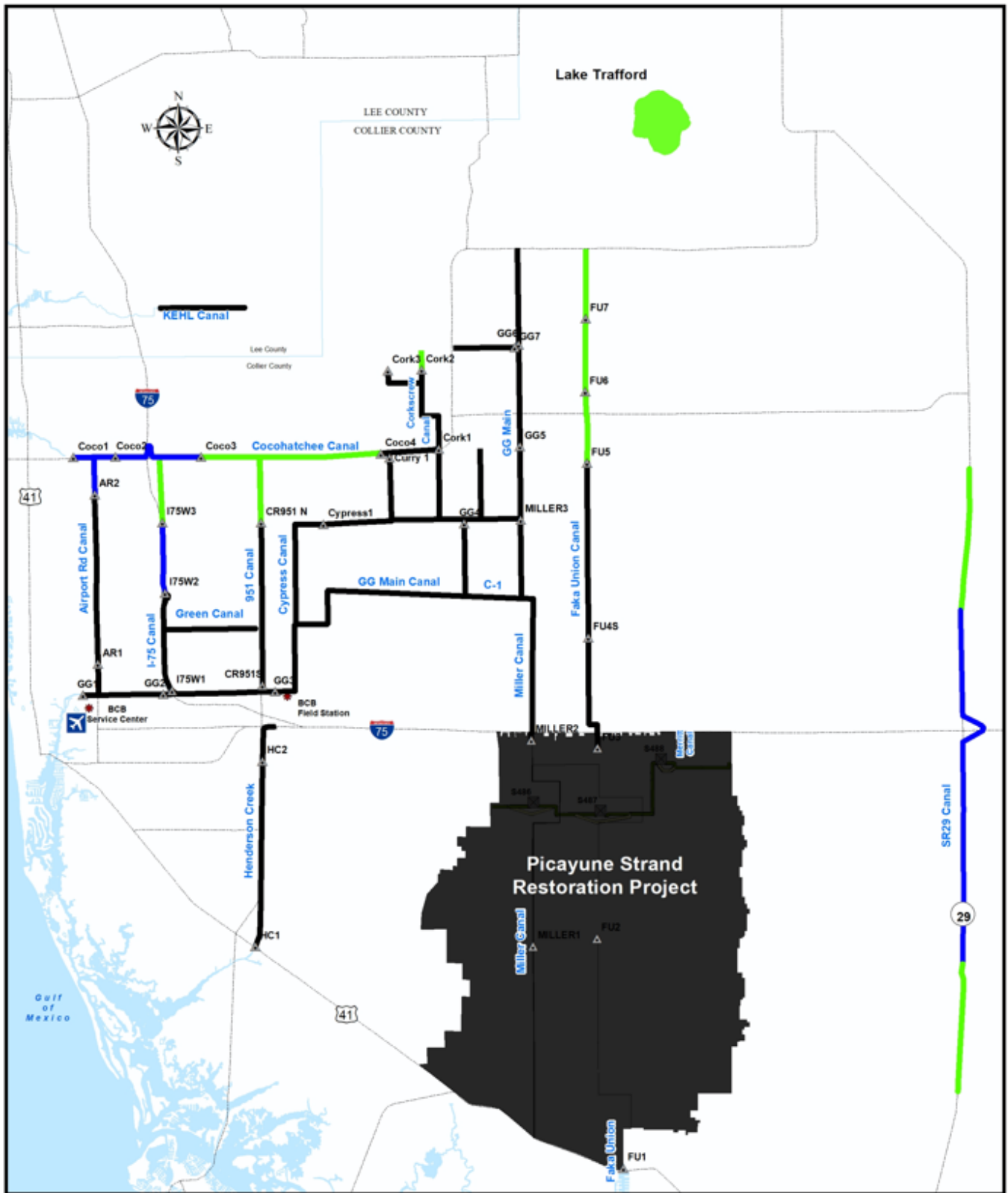
**BCB RAINFALL
SPATIAL DISTRIBUTION**

Urban Collier County, Florida



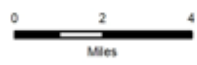
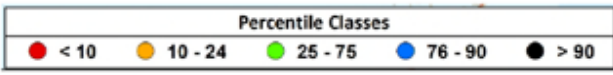
8/22/2022

FIGURE 4



DISCLAIMER
 Any information, including but not limited to software and data, released from the South Florida Water Management District ("District") in fulfillment of a request is provided "as is" without warranty of any kind, and the District expressly disclaims all express and implied warranties, including but not limited to the implied warranties of merchantability and fitness for a particular purpose. The District does not warrant, guarantee, or make any representations regarding the use, or the results of the use, of the information provided to you by the District in fulfillment of a request, including but not limited to the results and performance of any information obtained from the District is entirely assumed by the recipient.

This map is a conceptual tool offered for project development only. This map is not self-avoiding or binding, and does not otherwise affect the interests of any persons including any vested rights or existing uses of the project.



* Based on period of record for each canal reach




	<p>BIG CYPRESS BASIN SFWMD 2660 Horseshoe Dr. N. Naples, Florida 34104 239-263-7615</p>	<p>BCB Conditions Index 6/1/22 Urban Collier County, Florida</p>		
---	--	---	---	---

FIGURE 4A

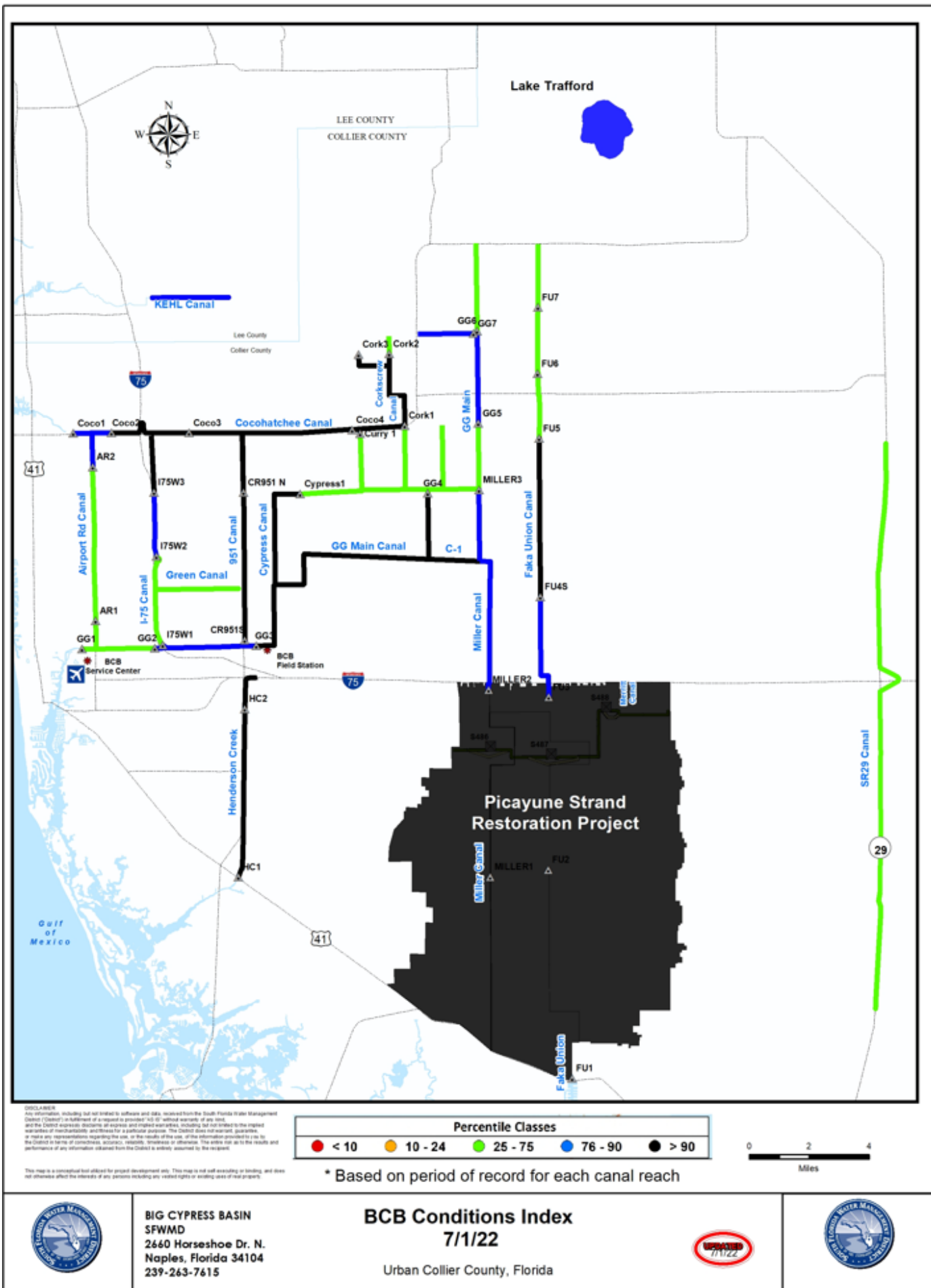
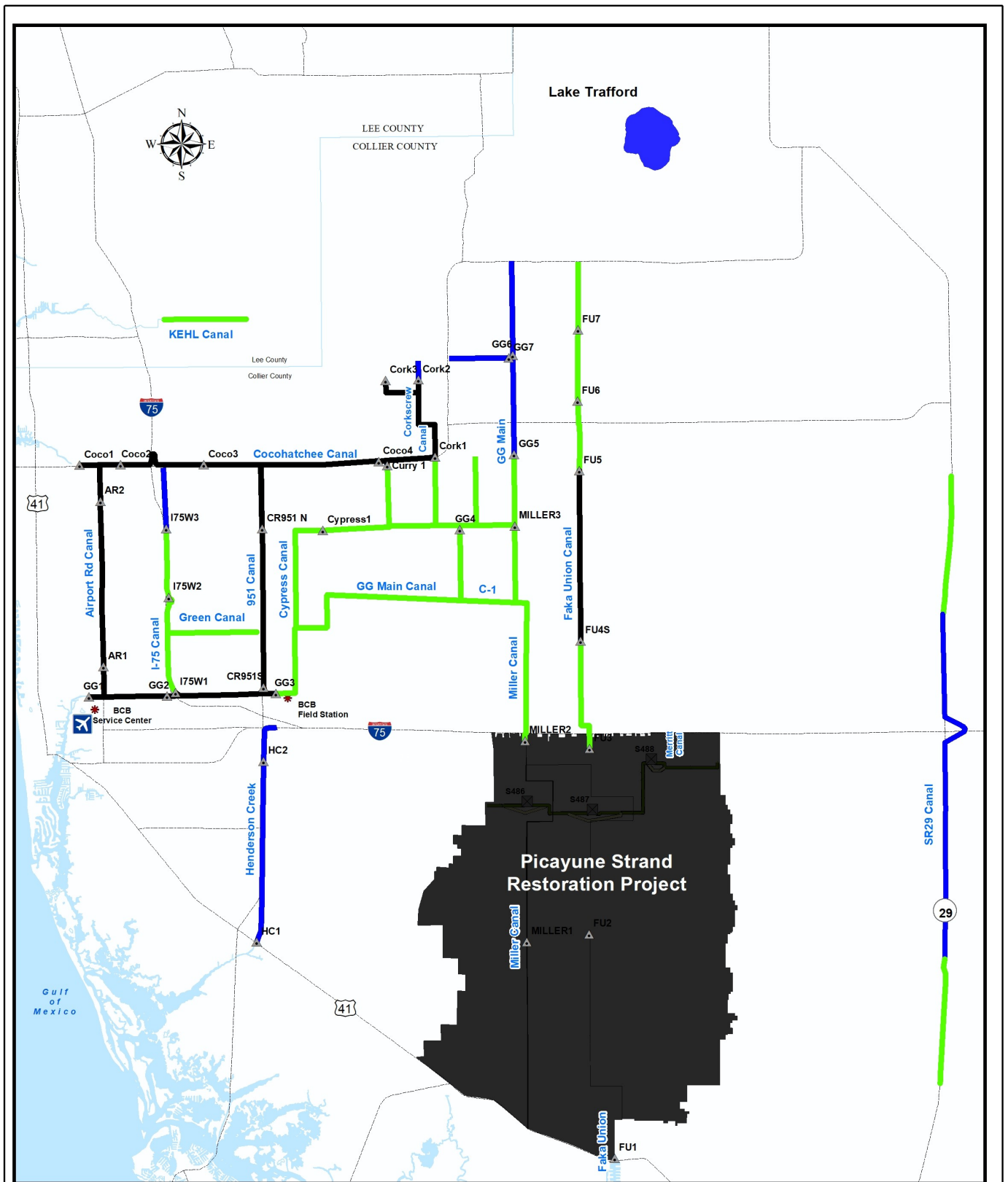
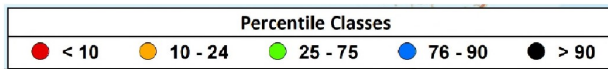


FIGURE 4A



DISCLAIMER
 Any information, including but not limited to software and data, received from the South Florida Water Management District ("District") in fulfillment of a request is provided "AS IS" without warranty of any kind, and the District expressly disclaims all express and implied warranties, including but not limited to the implied warranties of merchantability and fitness for a particular purpose. The District does not warrant, guarantee, or make any representations regarding the use, or the results of the use, of the information provided to you by the District in terms of completeness, accuracy, reliability, timeliness or otherwise. The entire use as to the results and performance of any information obtained from the District is entirely assumed by the recipient.

This map is a conceptual tool utilized for project development only. This map is not self-executing or binding, and does not otherwise affect the interests of any persons including any vested rights or existing uses of real property.



* Based on period of record for each canal reach



BIG CYPRESS BASIN
 SFWMD
 2660 Horseshoe Dr. N.
 Naples, Florida 34104
 239-263-7615

BCB Conditions Index
 7/31/22

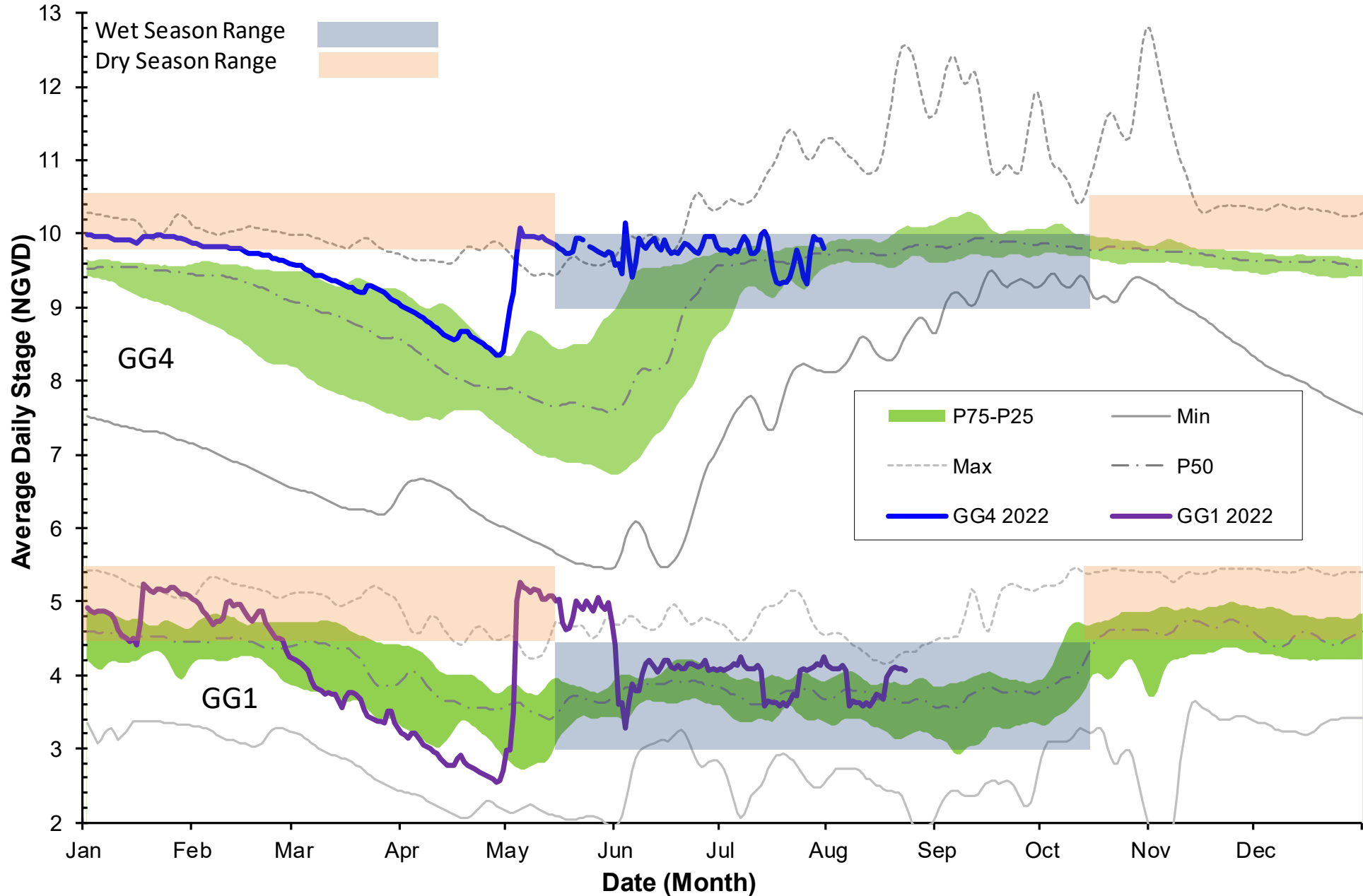
Urban Collier County, Florida



SFWMD_FL_NW_NC_2019

FIGURE 4A

Golden Gate Canal Historic Average Daily Headwater Percentiles



Cocohatchee Canal Historic Average Daily Headwater Percentiles

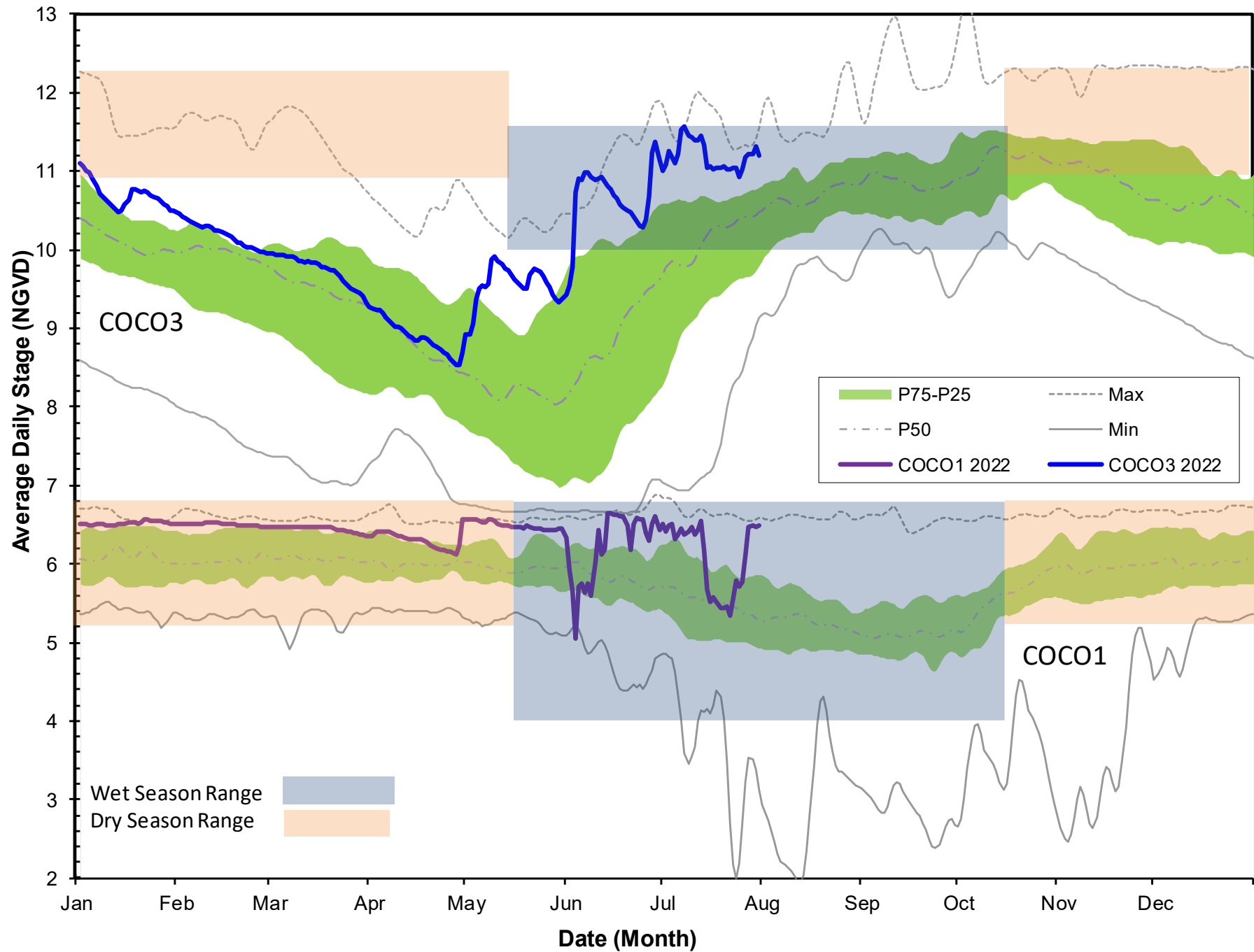


Figure 6C - CORK1 Historic Average Daily Headwater Percentiles (1989-2020)

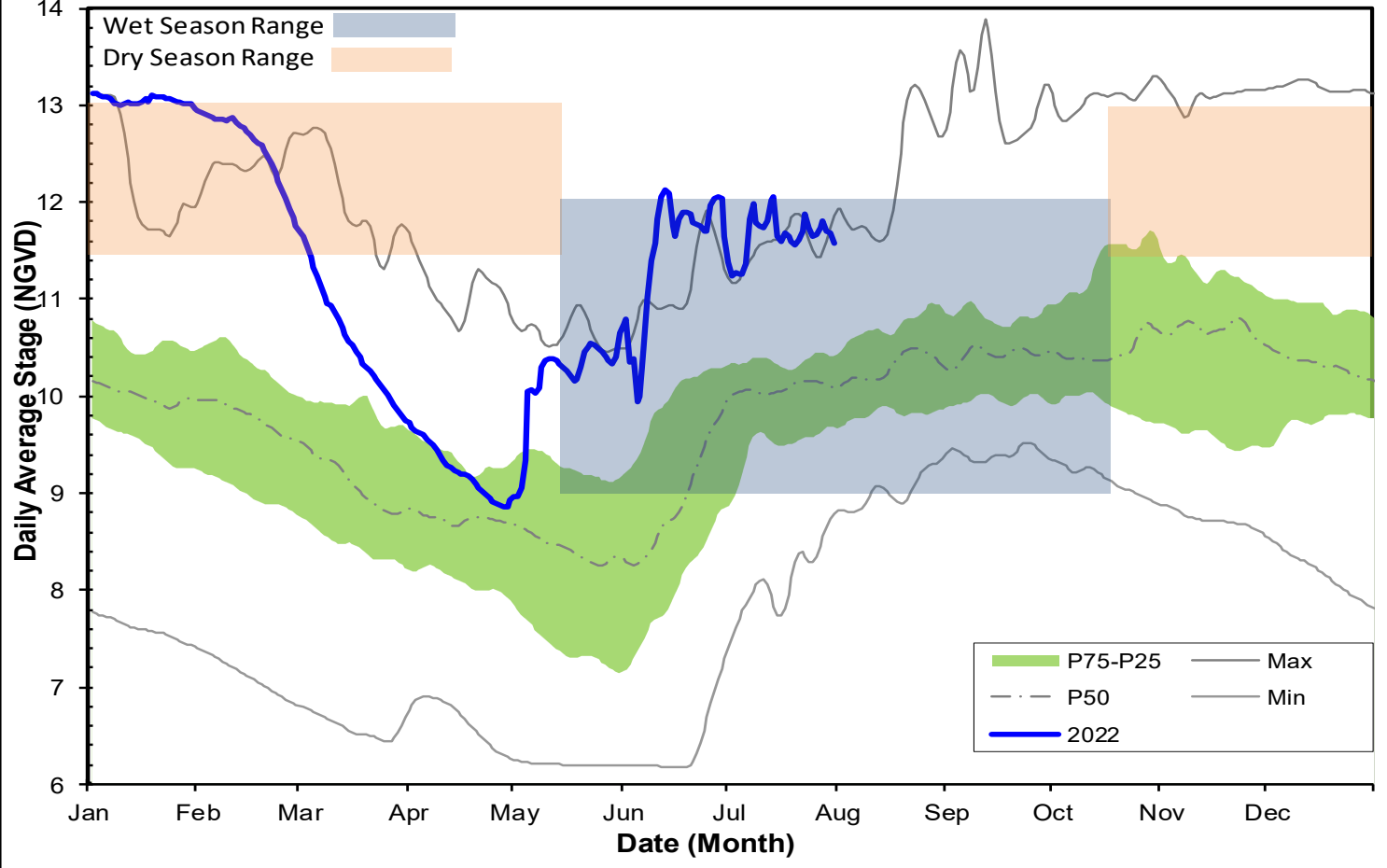
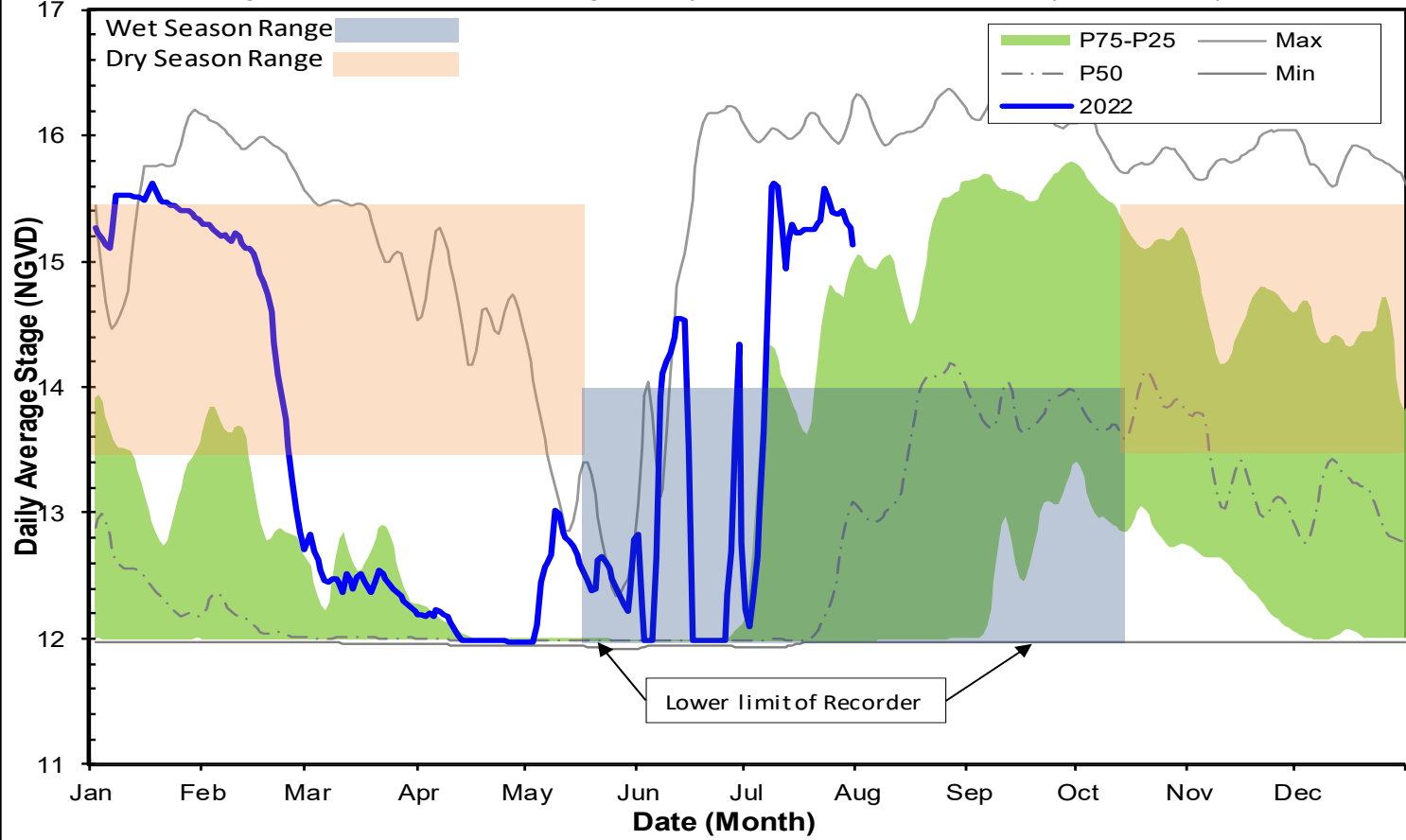
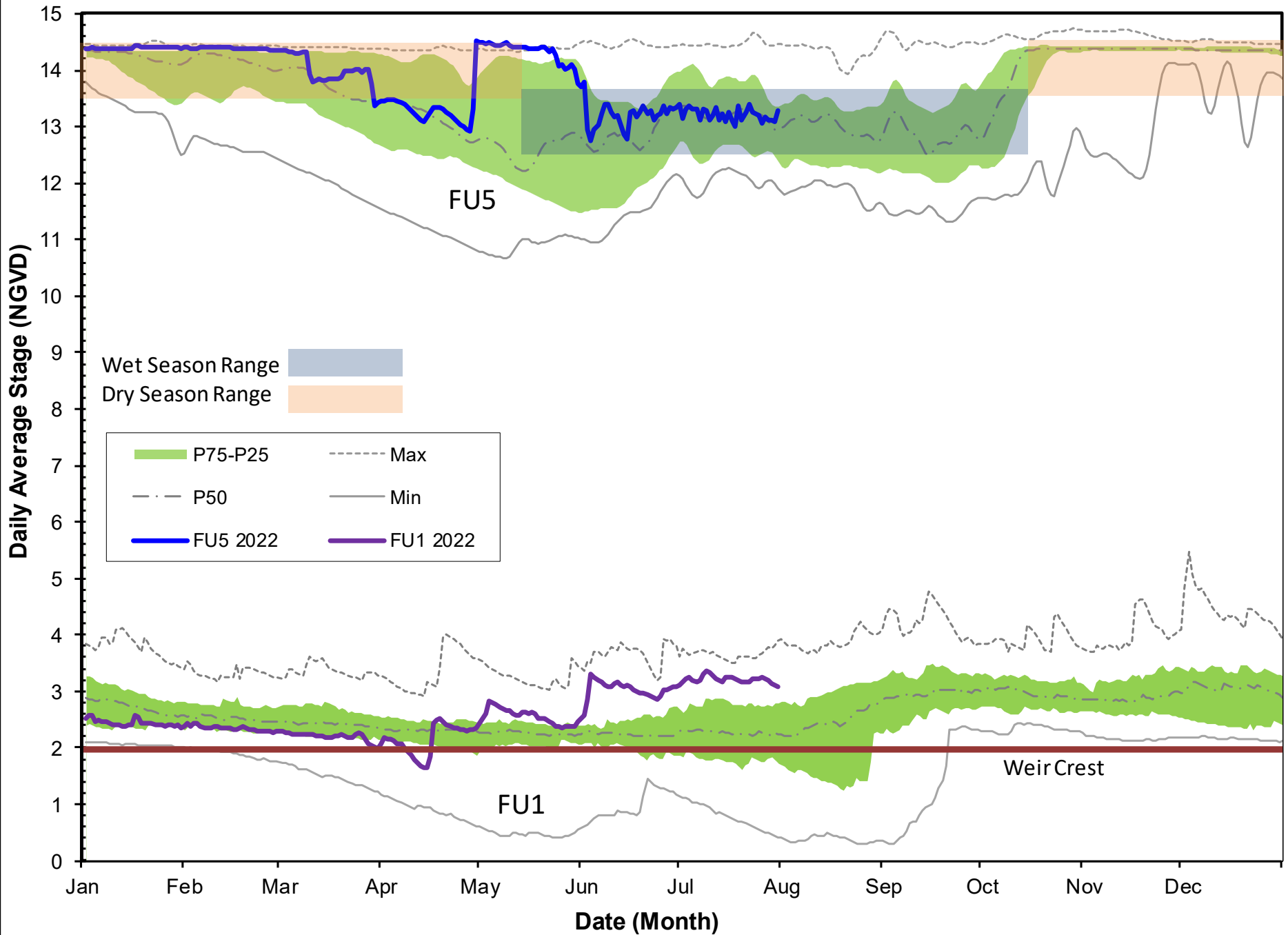


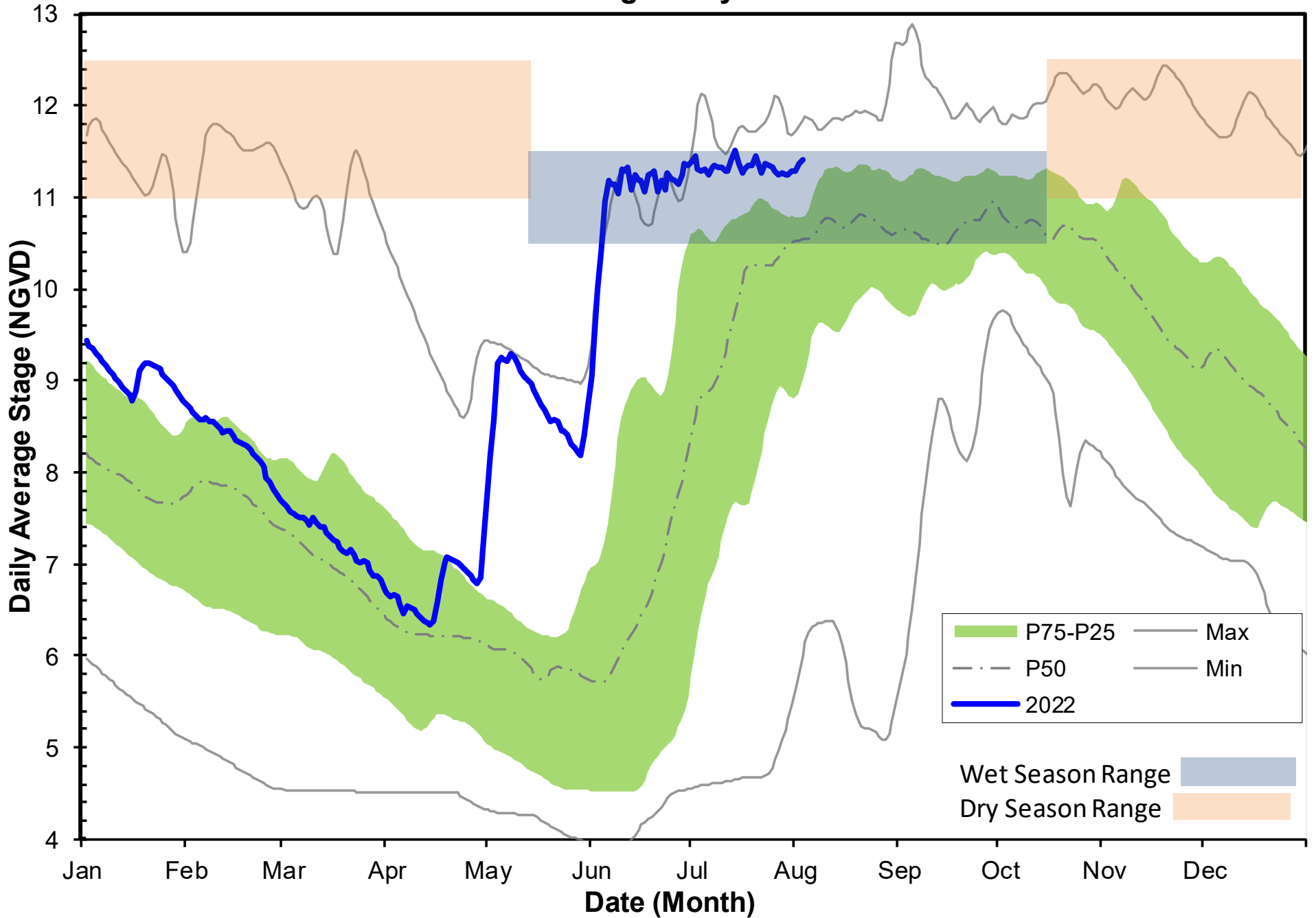
Figure 6D - CORK3 Average Daily Headwater Percentiles (2004-2020)



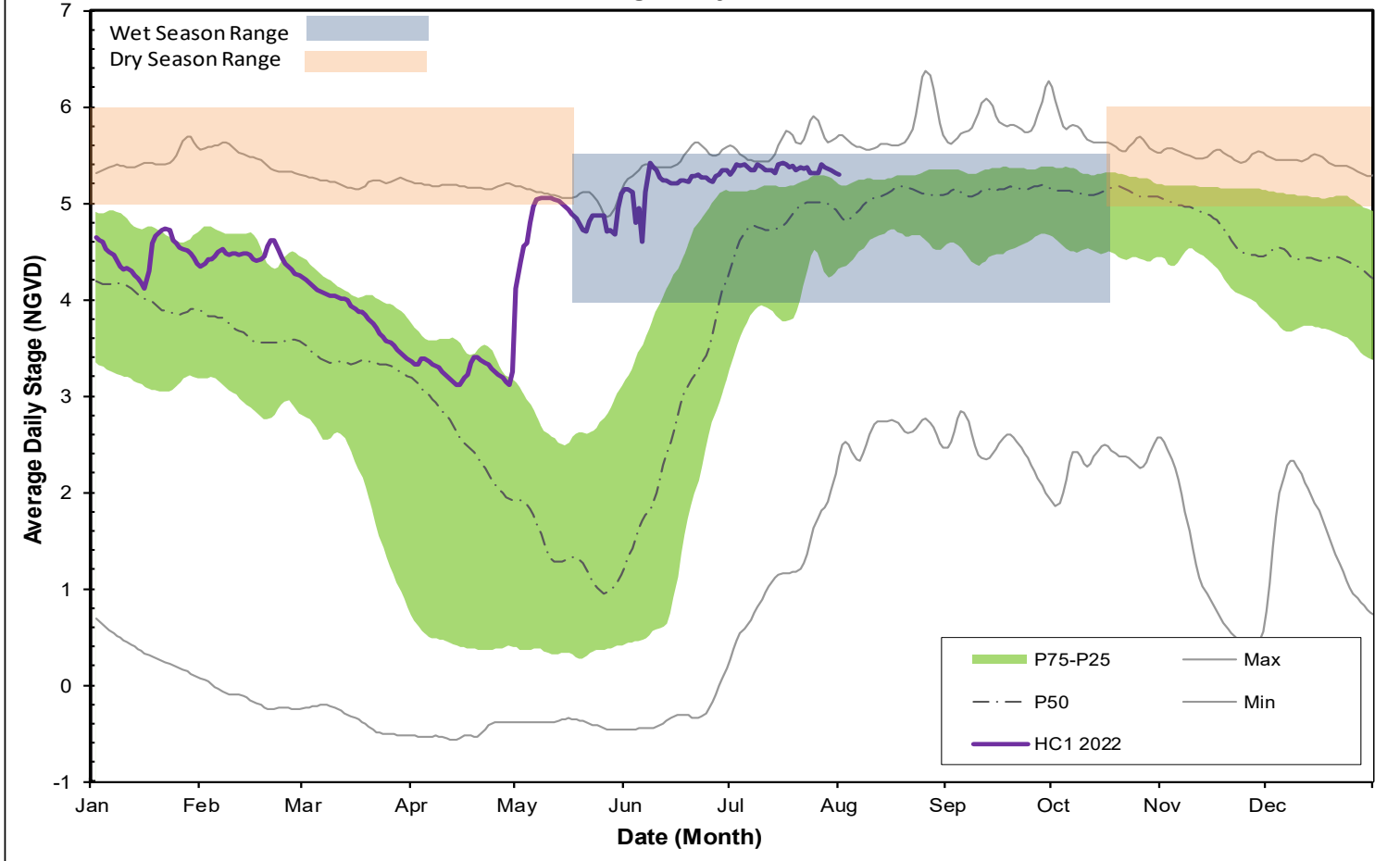
Faka Union Canal Historic Average Daily Headwater Percentiles



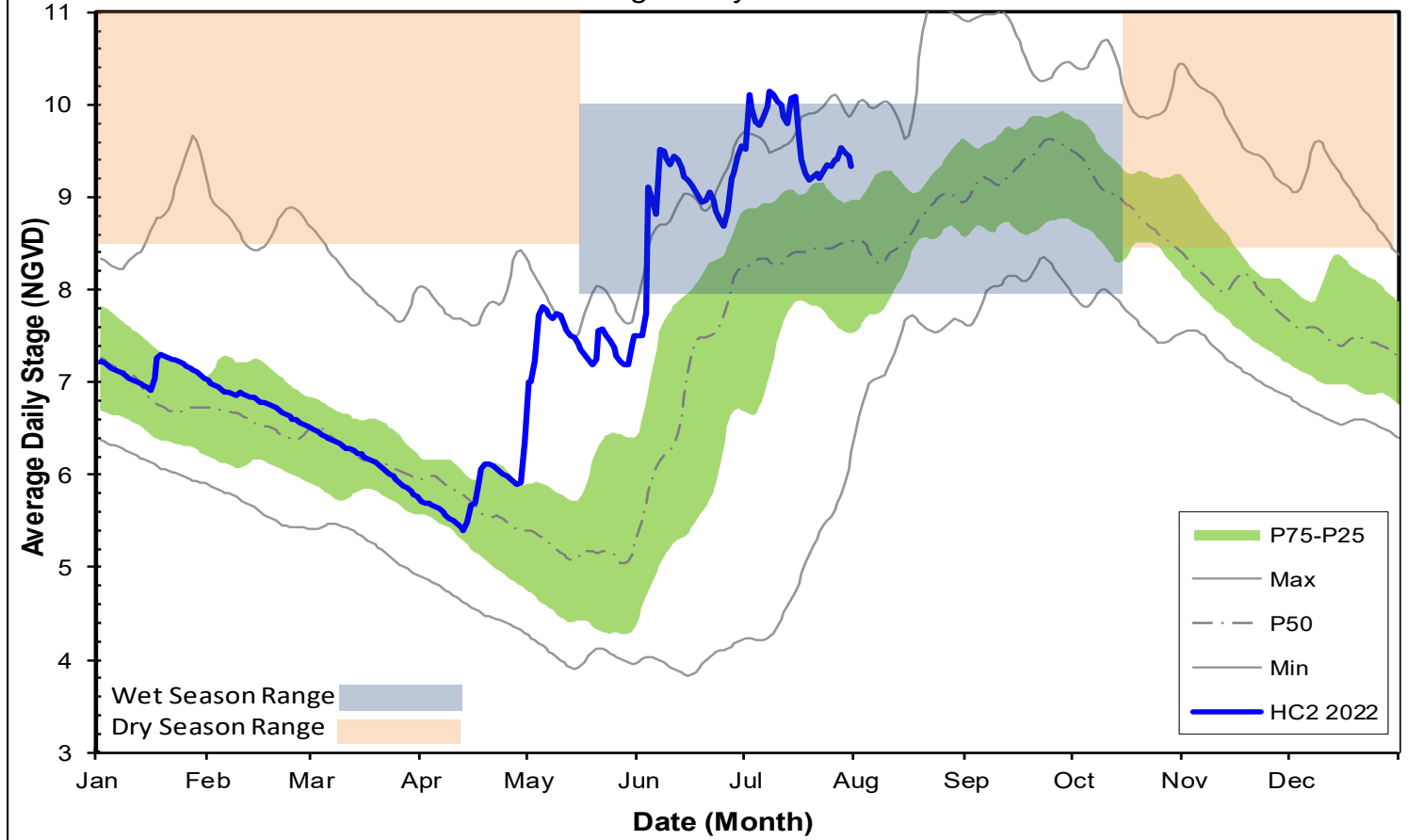
FU4S Historic Average Daily Water Percentiles



HC1 Historic Average Daily Headwater Percentiles



HC2 Historic Average Daily Headwater Percentiles



WATER CONDITIONS SUMMARY - May & June 2022

SELECTED STATIONS for BCB AREA / SW FLORIDA

Last Reading Date :		May 1, 2022					
Previous Period Reading Date:		June 29, 2022					
STATION INDEX NO.	WELL LOCATION	WELL / AQUIFER - TYPE	CHANGE (from previous date)	PREVIOUS LEVEL	CURRENT LEVEL (ft)	DIRECTION OF CHANGE	CONCERN INDICATOR
ALL INDICATOR LEVELS SHOWN IN FT-NGVD							
C-462	Immokalee	Lower Tamiami Aquifer	6.91	27.80	34.71	↑	GREEN
C-1004R	Naples	Lower Tamiami Aquifer	3.09	0.82	3.91	↑	GREEN
C-1224	Marco Lakes	Lower Tamiami Aquifer	1.87	3.16	5.03	↑	GREEN
C-948R	Golden Gate	Mid Hawthorn Aquifer	0.44	30.31	30.75	↑	
C-951R	Golden Gate	Lower Tamiami Aquifer	3.09	2.51	5.60	↑	
L-2194	Bonita Springs	Sandstone Aquifer	6.94	-0.93	6.01	↑	GREEN
L-2195	Bonita Springs	Surficial Aquifer System	4.02	7.75	11.77	↑	GREEN
L-738	Bonita Springs	Lower Tamiami Aquifer	6.31	-4.21	2.10	↑	GREEN

**TABLE 2
BCB WATER CONDITIONS SUMMARY
MAY & JUNE 2022**

WATER CONDITIONS SUMMARY - July 2022
SELECTED STATIONS for BCB AREA / SW FLORIDA

Last Reading Date :		August 1, 2022					
Previous Period Reading Date:		June 29, 2022					
STATION INDEX NO.	WELL LOCATION	WELL / AQUIFER - TYPE	CHANGE (from previous date)	PREVIOUS LEVEL	CURRENT LEVEL (ft)	DIRECTION OF CHANGE	CONCERN INDICATOR
ALL INDICATOR LEVELS SHOWN IN FT-NGVD							
C-462	Immokalee	Lower Tamiami Aquifer	-0.31	34.71	34.40	↓	GREEN
C-1004R	Naples	Lower Tamiami Aquifer	-0.11	3.91	3.80	↓	GREEN
C-1224	Marco Lakes	Lower Tamiami Aquifer	-0.20	5.03	4.83	↓	GREEN
C-948R	Golden Gate	Mid Hawthorn Aquifer	1.35	30.75	32.10	↑	
C-951R	Golden Gate	Lower Tamiami Aquifer	0.72	5.60	6.32	↑	
L-2194	Bonita Springs	Sandstone Aquifer	0.19	6.01	6.20	↑	GREEN
L-2195	Bonita Springs	Surficial Aquifer System	1.16	11.77	12.93	↑	GREEN
L-738	Bonita Springs	Lower Tamiami Aquifer	1.46	2.10	3.56	↑	GREEN

TABLE 2
BCB WATER CONDITIONS SUMMARY
JULY 2022

BIG CYPRESS BASIN

MAY - JULY 2022

GROUNDWATER LEVEL DAILY TRENDS COMPARED TO HISTORICAL AVERAGE

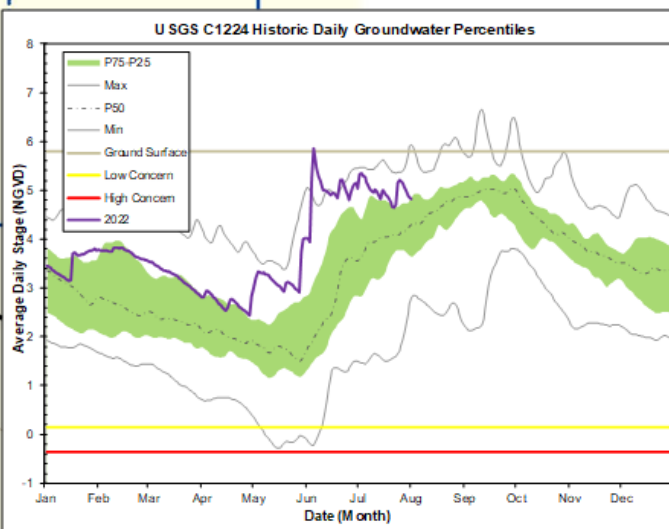
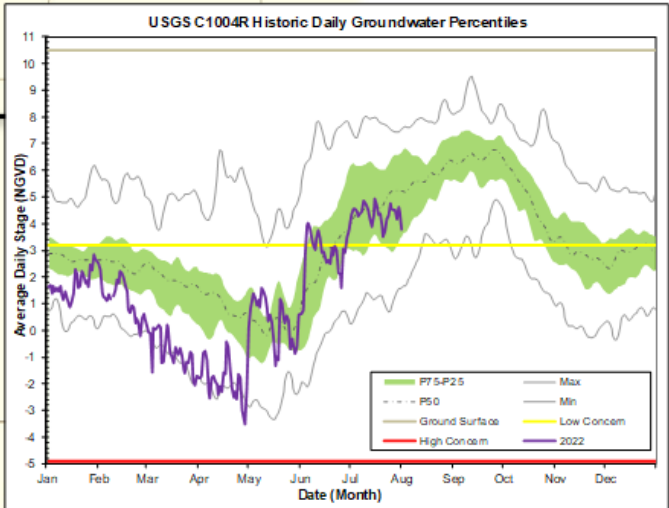
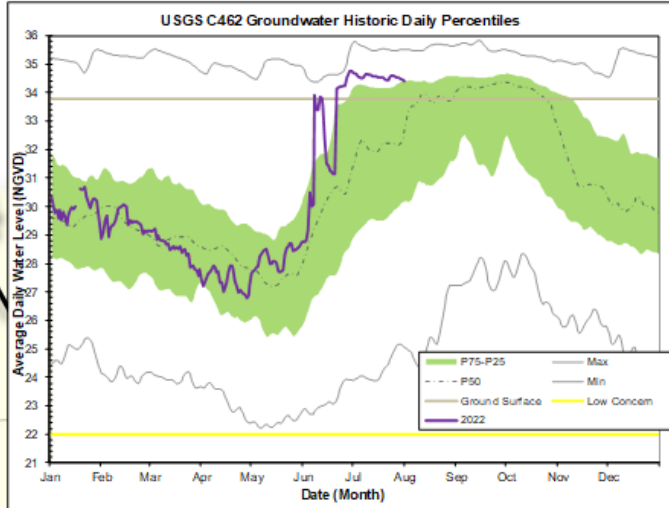
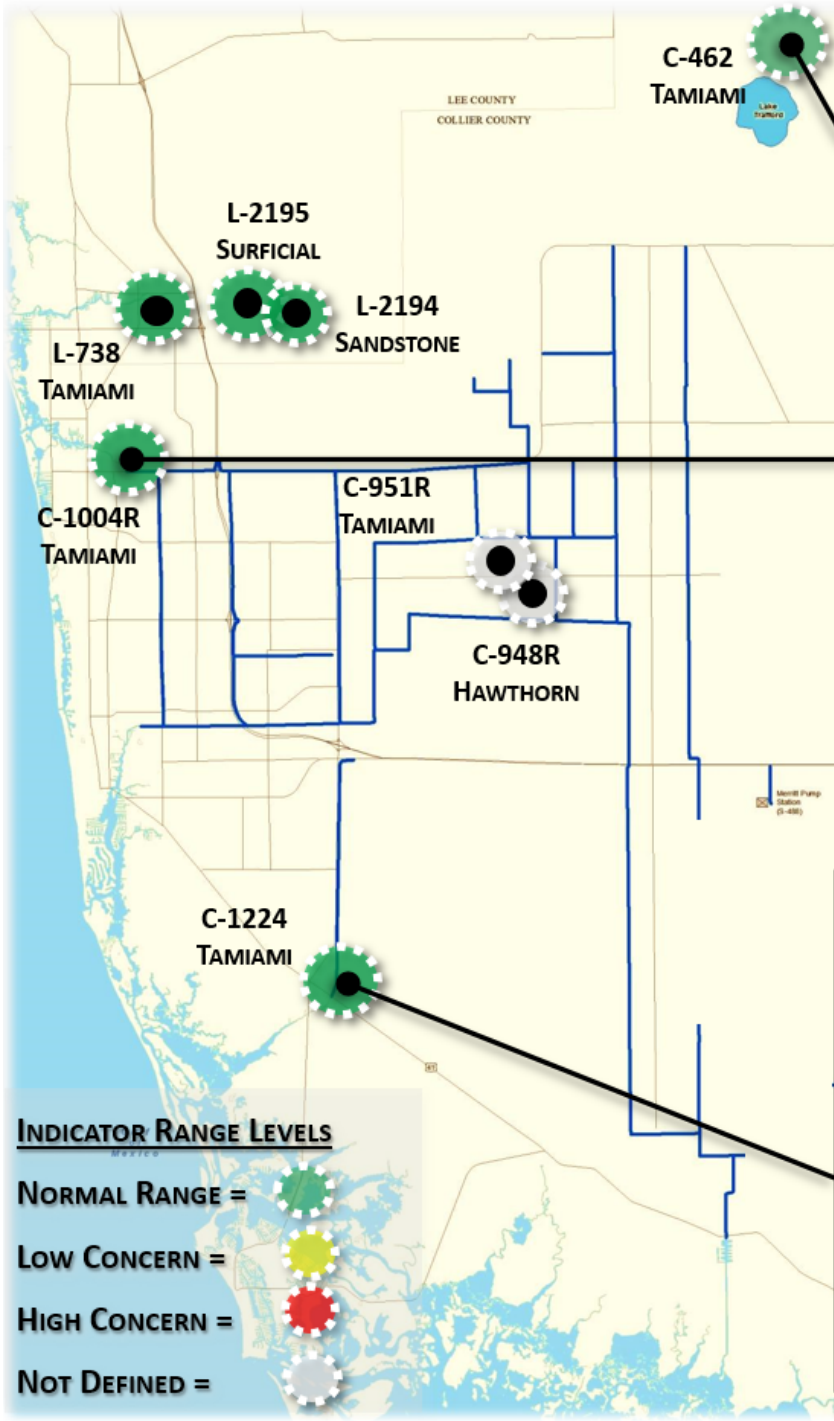


FIGURE 9

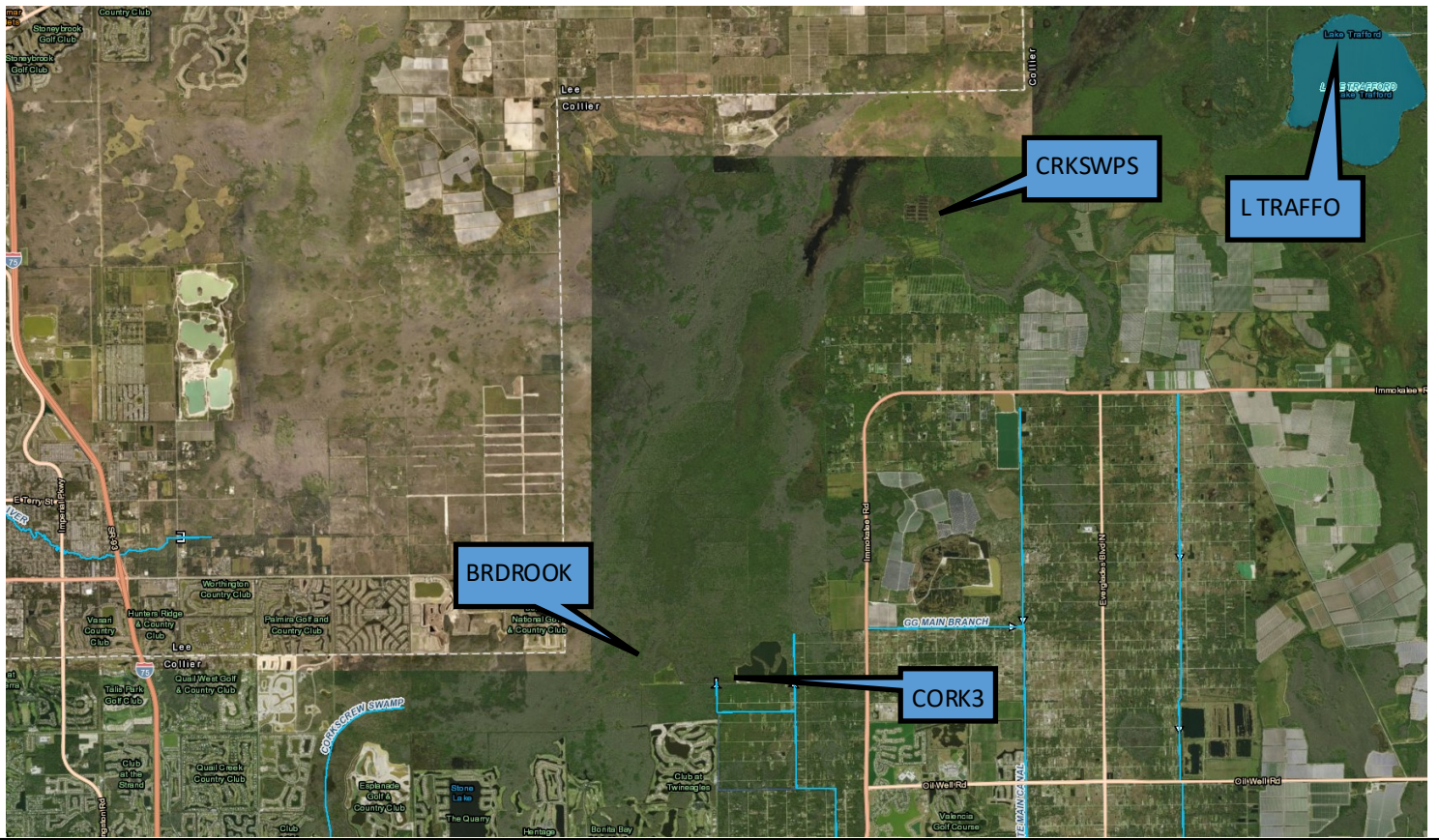
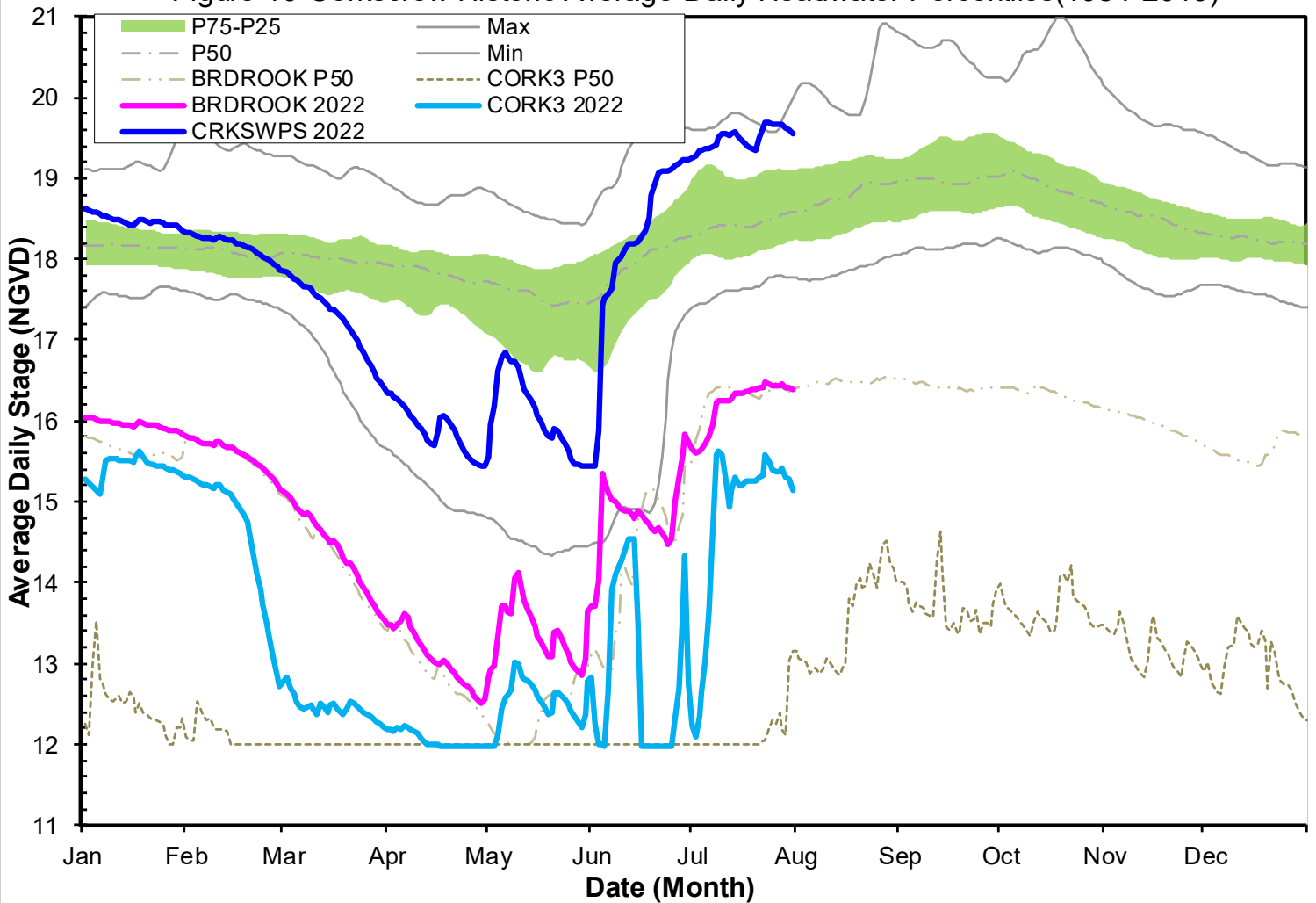


Figure 10-Corkscrew Historic Average Daily Headwater Percentiles(1984-2019)



Lake Trafford Historic Daily Water Level Percentiles (1941-2021)

